



# FY2021 & FY2022–2025 Capital Program Overview

CMAP Transportation Committee

December 11, 2020

Presented by Dustin J. Clark

Program Coordinator I, Strategic Planning and Performance



# Capital Program Guiding Principals

- **Promote regional equity**
- **Increase mobility**
- **Increase accessibility**
- **Increase operating efficiency**
- **Prioritize safety**
- **Reduce regional emission footprint**

“As part of a regional transportation network, Metra provides safe, reliable, efficient commuter rail service that enhances the economic and environmental health of northeast Illinois”

**- METRA'S MISSION STATEMENT**

## 2021-2025 Capital Program Funding (\$ millions)

| FUNDING SOURCES | 2021           | 2022           | 2023           | 2024           | 2025     | TOTAL            |
|-----------------|----------------|----------------|----------------|----------------|----------|------------------|
| Federal Base    | \$189.5        | \$192.3        | \$195.2        | \$198.1        | -        | \$775.1          |
| Federal CMAQ    | 0.3            | -              | 28.8           | -              | -        | 29.1             |
| State Bonds     | 119.1          | 144.9          | 138.1          | 102.7          | -        | 504.8            |
| State PAYGO     | 73.8           | 73.8           | 73.8           | 73.8           | -        | 295.2            |
| RTA ICE         | 4.1            | 4.4            | 4.6            | -              | -        | 13.1             |
| RTA Bonds       | -              | -              | 130.0          | -              | -        | 130.0            |
| <b>TOTAL</b>    | <b>\$386.8</b> | <b>\$415.4</b> | <b>\$570.5</b> | <b>\$374.6</b> | <b>-</b> | <b>\$1,747.3</b> |

## 2021-2025 Capital Program Uses (\$ millions)

| ASSET CATEGORIES                    | 2021           | 2022           | 2023           | 2024           | 2025     | TOTAL            |
|-------------------------------------|----------------|----------------|----------------|----------------|----------|------------------|
| Rolling Stock                       | \$141.1        | \$181.8        | \$334.1        | \$170.2        | -        | \$827.2          |
| Bridges, Track & Structure          | 48.1           | 50.6           | 35.1           | 48.4           | -        | 182.2            |
| Signal, Electrical & Communications | 75.9           | 61.4           | 81.6           | 60.3           | -        | 279.2            |
| Facilities & Equipment              | 56.4           | 35.6           | 29.5           | 34.8           | -        | 156.3            |
| Stations & Parking                  | 47.3           | 64.3           | 68.0           | 40.9           | -        | 220.5            |
| Support Activities                  | 18.0           | 21.7           | 22.2           | 20.0           | -        | 81.9             |
| <b>TOTAL</b>                        | <b>\$386.8</b> | <b>\$415.4</b> | <b>\$570.5</b> | <b>\$374.6</b> | <b>-</b> | <b>\$1,747.3</b> |

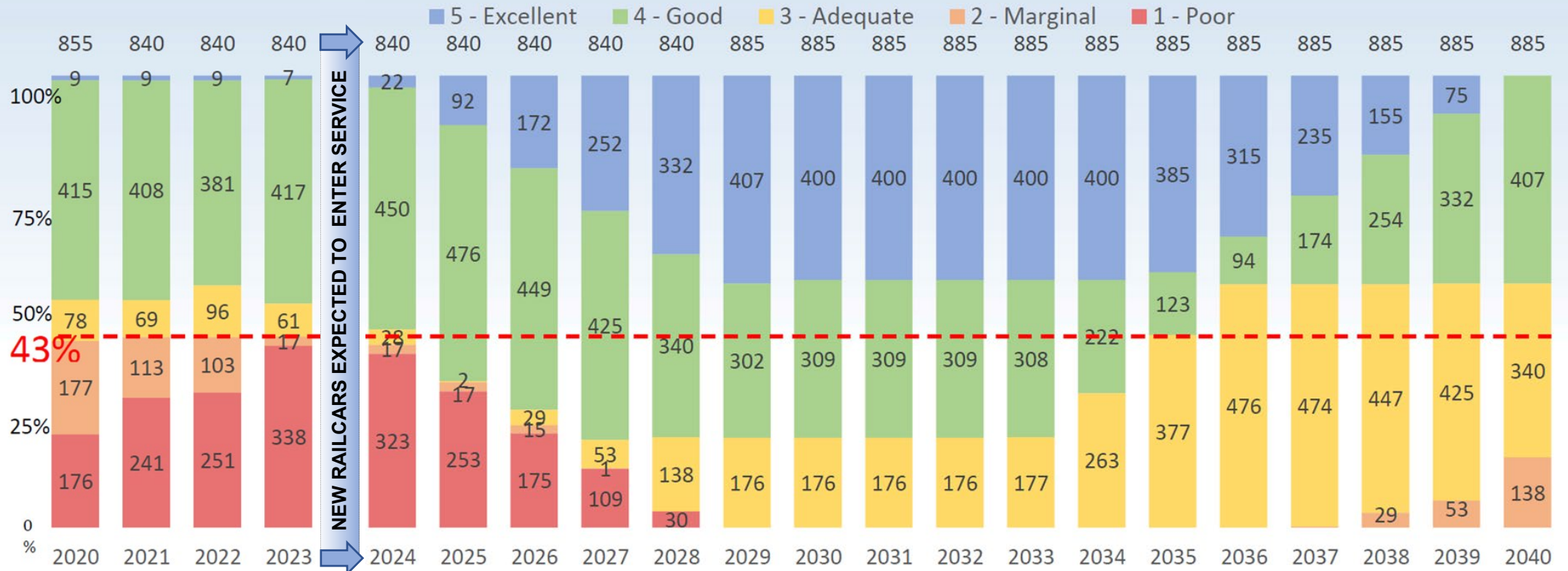
## Major Capital Projects Programmed in 2021

| <b>MAJOR CAPITAL PROJECT</b>    | <b>2021</b>      | <b>% of 2021</b> |
|---------------------------------|------------------|------------------|
| New Rail Cars & Locomotives     | \$61.5 M         | 15.9%            |
| Locomotive & Car Rehabilitation | 69.9 M           | 18.1%            |
| Stations & Parking              | 47.3 M           | 12.2%            |
| Equipment and Vehicles          | 34.9 M           | 9.0%             |
| Bridges                         | <u>12.9 M</u>    | <u>3.3%</u>      |
| <b>TOTAL</b>                    | <b>\$226.5 M</b> | <b>58.6%</b>     |

**Major Capital Projects account for 58.6% of the total 2021 Capital Program.**

# New Rail Cars

Railcar Condition Rating modeled with New Railcar Procurement and delivery in 2024



# Project Management Oversight (PMO)

- PMOs are common in the construction industry and transportation agencies.
- WSP USA, Inc. will help manage key areas of the capital program.
- The PMO will allow Metra to hire expertise on an as-needed basis;
  - PMO's expertise will allow Metra to quickly ramp up resources to meet the higher demand, and just as quickly ramp down again.



# 2021 Rolling Stock



## **\$141.1M PROGRAMMED FOR 14 PROJECTS**

### **NEW CAR PURCHASE | \$53.6M**

- Reviewing proposal for initial base order of 200 new rail cars with the option to buy up to 200 more.

### **CAR AND LOCOMOTIVE REHABILITATION | \$33.4M**

- Life-extending rehabilitation of cars and locomotives.

### **DC TO AC CONVERSION | \$25M**

- Converts locomotives from DC to AC traction propulsion to increase reliability and reduce diesel emissions.

### **F40/F59 LOCOMOTIVE ENGINE UPGRADE | \$10M**

- Increases useful life and reduces diesel emissions.

Continued funding for Wheel Replacement, Locomotive and Car Improvements and Cameras, and Traction Motors as well as COVID-19 Modifications and PTC Renewal.



# 2021 Bridges, Track & Structure

## **\$48.1M PROGRAMMED FOR 26 PROJECTS**

### **275-OLD 96TH AVENUE | \$8M**

- Construction funds for a RI bridge that spans over 96th Ave. in Mokena.

### **CREATE P-2 | \$6.5M**

- Engineering funds for the 75th Street CIP.

### **BRIDGE A318 | \$2.5M**

- Construction funds for a MD-N bridge north of Rockland Rd. in Lake Bluff.

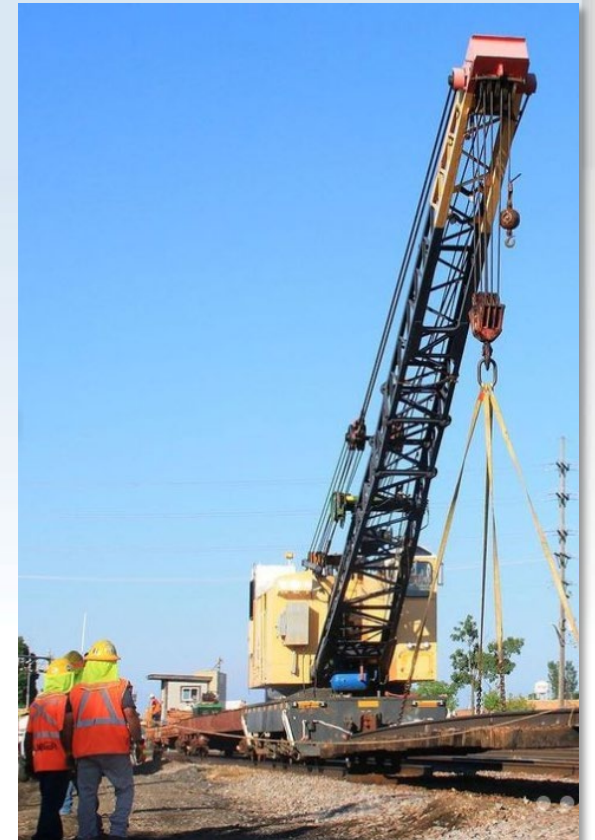
### **GRAND AVENUE | \$1M**

- Design funds for a MWD/NCS bridge over Chicago Ave. in Chicago.

### **STONEY CREEK-SWS | \$2.5M**

- Design funds for a SWS bridge north of Rockland Rd. in Lake Bluff.

Continued funding for Bridges and Retaining Walls, Rail Replacement, Ties & Ballast, Undercutting & Surfacing, and Crossings (Road & Track).



# 2021 Signal & Electrical



## **\$75.9M PROGRAMMED FOR 30 PROJECTS**

### **SUBSTATION IMPROVEMENTS (JACKSON) | \$10.2M**

- Funds to modernize an ME substation to increase reliability and capacity.

### **FIBER OPTIC | \$8M**

- Funds to install modern fiber optic cable along the ME to provide reliable transmission of PTC and other communications data.

### **SMART GATES | \$7M**

- Construction funds innovate gates and signals that self-monitor.

### **A-20 INTERLOCKING | \$6M**

- A portion of construction funds to renew a rail-crossover along the MWD.

### **MWD LINE SIGNALS | \$4M**

- A portion of construction funds to modernize and upgrade signals.

Continued funding for Signal System Improvements, Communication Improvements, Impedance Bonds, and Facilities – Electrical projects.

# 2021 Facilities & Equipment

## **\$56.0M PROGRAMMED FOR 21 PROJECTS**

### **TICKET VENDING MACHINES | \$10M**

- First phase of installing up to 310 ADA-accessible TVMs compatible with contactless cards and mobile wallet applications.

### **RIGHT OF WAY EQUIPMENT | \$9M**

- Purchase of track maintenance equipment that will reduce emissions.

### **BUILDING IMPROVEMENTS | \$5M**

- Various improvements to Metra's 547 headquarters to comply with code.

### **GPS / TRAIN TRACKING | \$3.7M**

- GPS, on-board announcement system and signs on the entire fleet.

### **TROI-NET | \$2.6M**

- Design and rollout of the next generation of Metra's VIS Signs.

Continued funding for Yard Improvements, IT Components & Services, Central Warehousing, Automatic Passenger Counters, and Office Equipment projects.



# 2021 Stations & Parking



## **\$47.3M PROGRAMMED FOR 15 PROJECTS**

### **VAN BUREN STREET STATION | \$9.8M**

- Initial construction funds for the complete rehabilitation of the ME terminal.

### **59<sup>TH</sup>/60<sup>TH</sup> ST. STATION (UNIV. OF CHICAGO) | \$9M**

- Initial construction funds for the reconstruction of the ME station that will make it ADA-accessible and reopen the 60<sup>th</sup> Street entrance.

### **79<sup>TH</sup> STREET CHATHAM | \$5M**

- Construction funds to refurbish the ME station.

### **ELMHURST | \$2M**

- Metra's contribution to the CMAQ-funded new UP-W station.

### **WESTMONT | \$2M**

- Installation of innovative heated-platform technology at the BNSF station.

Continued funding for Systemwide Station Improvements, Platform Improvements, Shelters, Elevator Replacement, and Bicycle Parking projects.

# 2021 Support Activities

## **\$17.9M PROGRAMMED FOR 12 PROJECTS**

### **PROGRAM MANAGEMENT | \$10M**

- Funds professional services to provide additional program management capacity to implement state funded projects.

### **TRANSIT ASSET MANAGEMENT | \$2.3M**

- Funds the continuation of Metra's comprehensive asset management and implementation and updates to the TAM Plan.

### **PROJECT ADMINISTRATION | \$1M**

- Funds activities associated with administration of capital grants.

### **PROJECT DEVELOPMENT | \$0.5M**

- Funds studies to advance major capital projects and secure grant funding.

Continued funding for Infrastructure Engineering, Contingencies, and RTA ICE Funded projects.





***Metra***

***Metra***