



# Transportation Investments Locally Programmed Federal Funds

Environment & Natural Resources Committee  
March 5, 2020

# Background

**As the MPO for Northeastern Illinois, it is CMAP's responsibility to allocate certain federal funds:**

**CMAQ**

**TAP-L**

**STP**

# **Congestion Mitigation and Air Quality Improvement Program (CMAQ)**

**Non-attainment for Air Quality Standard – Ozone**

**Approx. \$115 million annually for projects to reduce transportation-related emissions**

# **Transportation Alternatives Program (TAP-L)**

**Approx. \$10 million annually for bicycle projects that help complete the region's Greenways and Trails Plan (RGTP)**

# **Surface Transportation Block Grant Program (STP)**

**Split b/t STP Local (STP-L) & STP Shared Fund (STP-SF)**

**Approx. \$140 million annually for highway, transit, bicycle/pedestrian, and other projects that maintain, improve, or expand transportation**

# **STP-L**

**Approx. \$100 million annually**

**Distribution of funds based on relative need to the subregional Councils of Mayors and City of Chicago**

**Councils select projects for funding using their own methodologies**

# **STP-SF**

**Approx. \$40 million annually**

**Fund larger projects > \$5 million or multijurisdictional**

**Focus on transit station rehab/reconstructions, bridge rehab/reconstructions, highway/rail grade crossing improvements, road expansions/reconstructions, bus speed improvements, corridor-level or small area safety improvements, truck route improvements**



# Project Evaluation

# **CMAQ**

## **Cost benefit of emissions reduction (60pt)**

**Volatile Organic Compounds (VOC)**

**Particulate Matter (PM) & Nitrogen Oxides (NOx)**

## **Transportation Impact Criteria (30pt)**

**Mode Specific**

## **Regional Planning Factors (10pt)**

**Inclusive Growth**

**Regionally Significant Project**

**Transit Supportive Land Use**

# **TAP-L**

**Completion of RGTP (30pt)**

**Population and Employment Density (25pt)**

**Safety and Attractiveness Rating (25pt)**

**Inclusive Growth (10pt)**

**Project Readiness (5pt)**

# STP-SF

## **Project Readiness (25pt)**

**Engineering, Plan Inclusion, Financial Commitment**

## **Transportation Impact (50pt)**

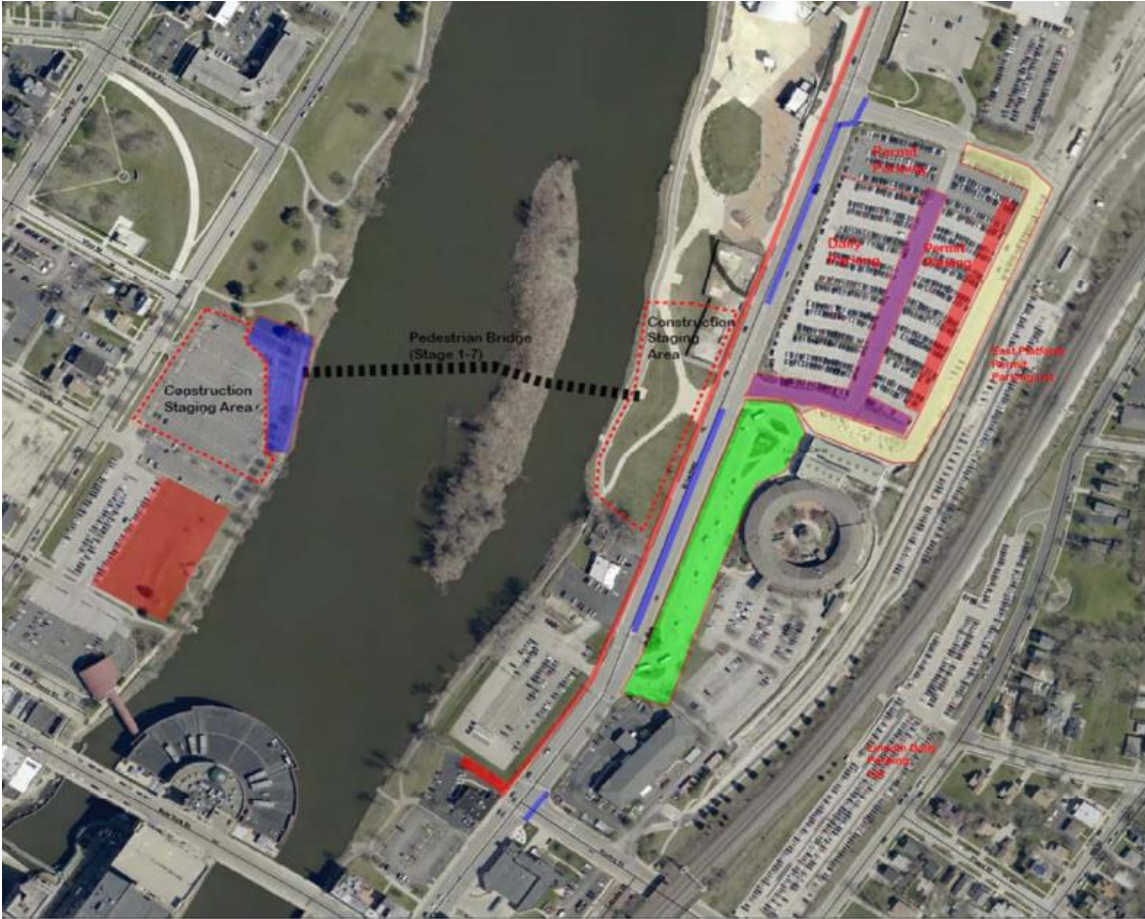
**Current Condition/Need, Improvement, Jobs/Housing**

## **Planning Factors (25pt)**

**Green Infrastructure, Freight Movement, Inclusive Growth, Complete Streets,  
Transit Supportive Density**

# Project Examples

# CMAQ – Transit



# CMAQ – Direct Emissions Reduction



# CMAQ – Traffic Flow





# CMAQ – Bicycle



# TAP-L



# STP-SF – Station Rehab



# STP-SF – Hwy/Rail Grade Separation





[www.cmap.illinois.gov](http://www.cmap.illinois.gov)  
Doug Ferguson  
[dferguson@cmap.illinois.gov](mailto:dferguson@cmap.illinois.gov)