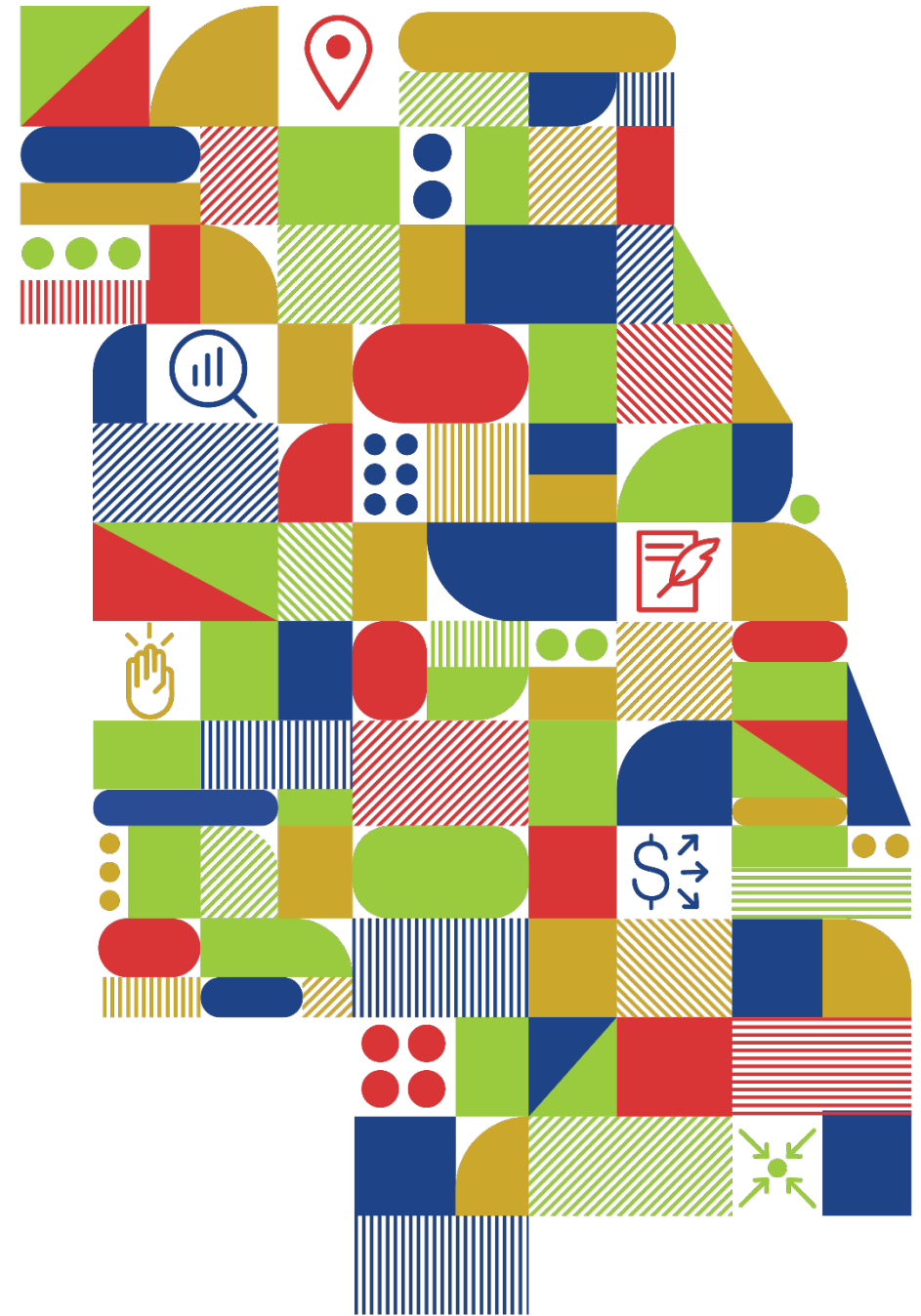




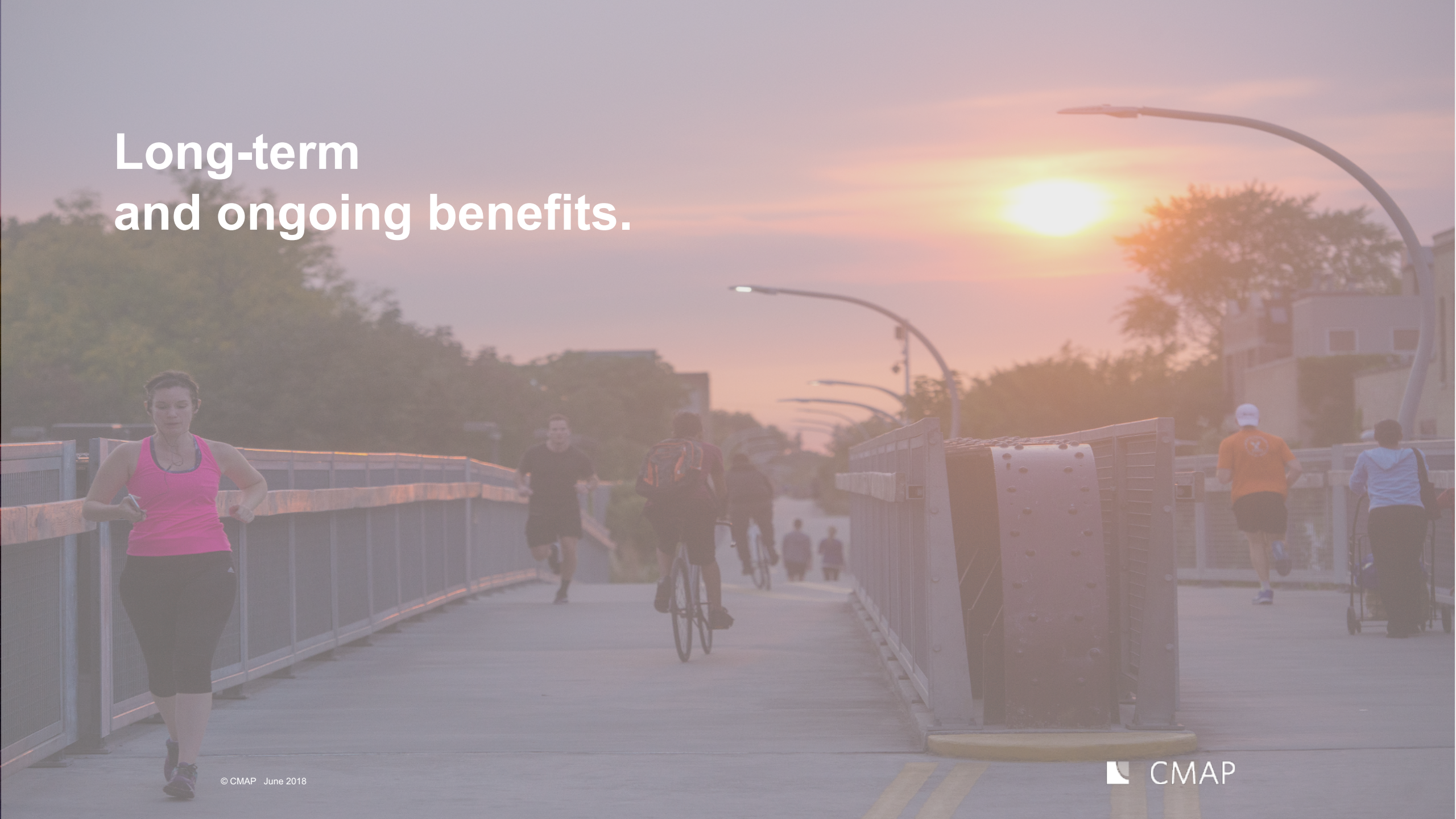
# Local Government Network & COVID19 Regional Survey

Patrick Day, AICP  
Timi Koyejo





# Long-term and ongoing benefits.





# Immediate need.

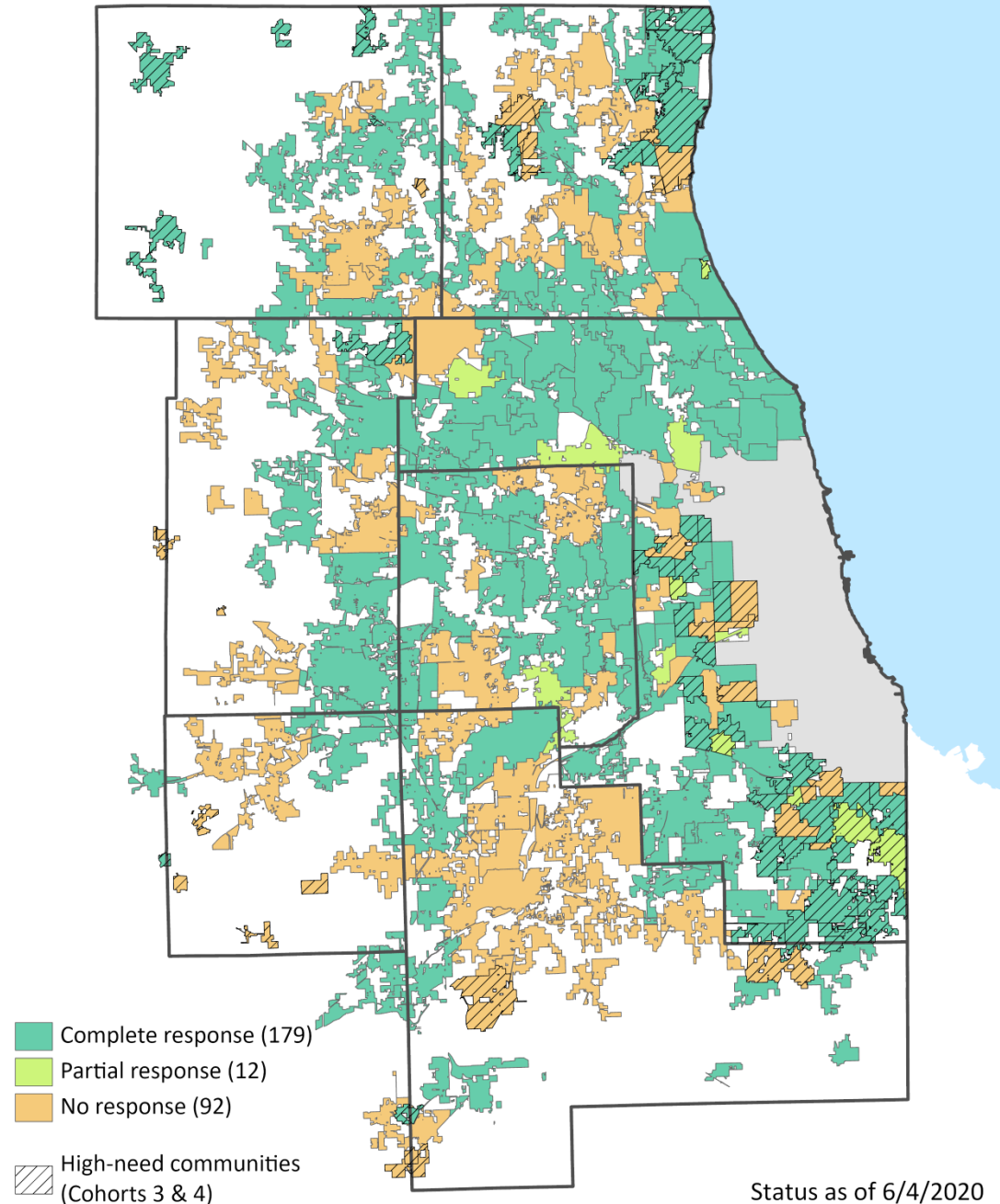


# COVID-19 Regional Recovery Survey Results

Responses from communities across the region

Data supports the City of Chicago's COVID-19 Recovery Task Force

Helps establish ongoing relationships



Status as of 6/4/2020



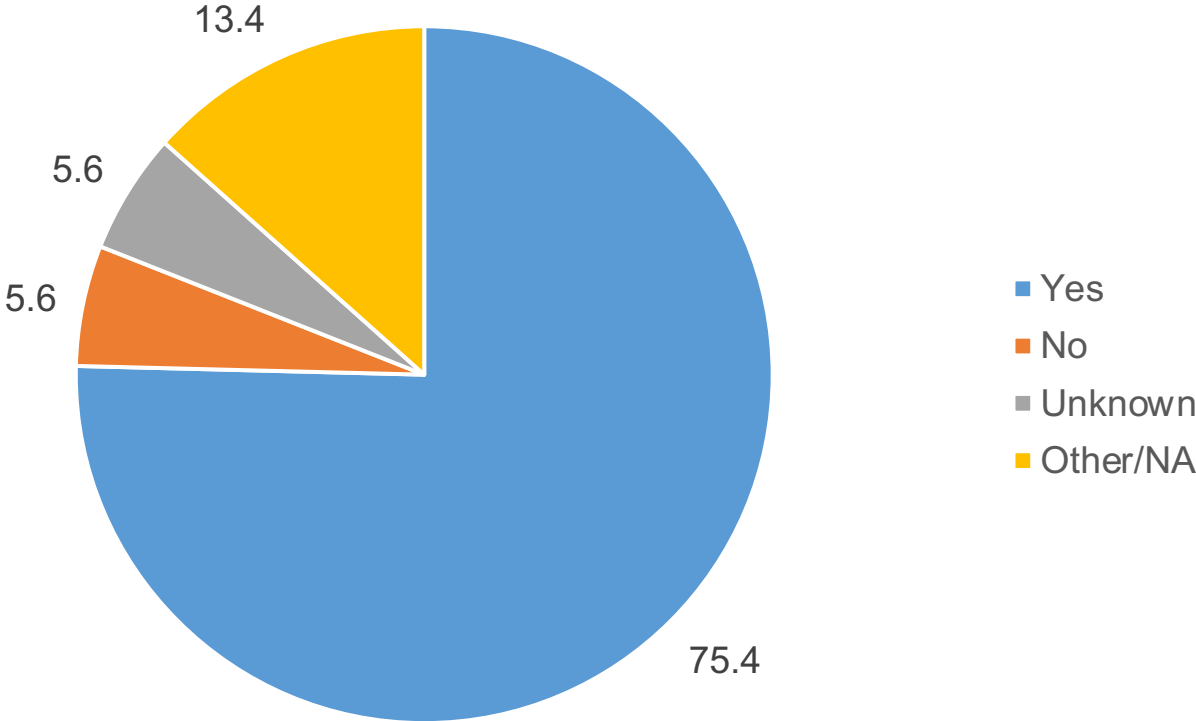
# Response rates by County

County	County response rate	Response (fully or partially complete)	Municipalities in County
Cook	82%	98	120
DuPage	70%	21	30
Kane	46%	11	24
Kendall	33%	3	9
Lake	53%	25	47
McHenry	73%	19	26
Will	50%	14	28
<b>Total</b>	<b>67%</b>	<b>191</b>	<b>284</b>

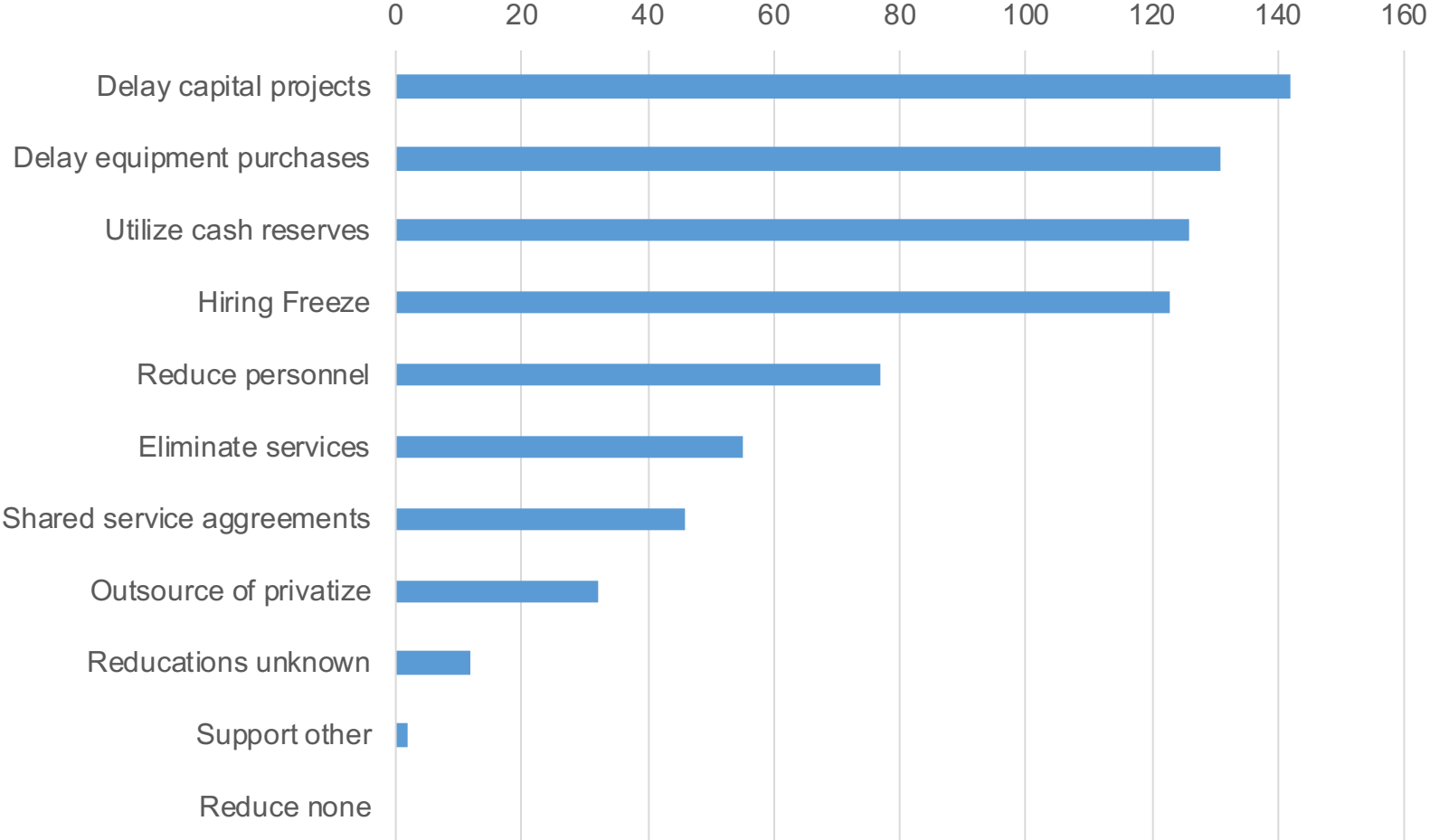
# Budgetary Impacts



# Is the COVID-19 pandemic currently straining your government's budget?



# During the Phase 4 “revitalization period” what is your organization considering to help address revenue loss, while still serving the needs of your community?





# Top 4 most selected options consistent across all counties

	Delay capital projects	Delay equipment purchases	Utilize cash reserves	Hiring freezes	Reduce personnel	Eliminate services	Shared services	Outsource or privatize services
Cook	71	65	55	61	40	27	20	14
DuPage	18	17	17	17	9	8	5	6
Kane	8	7	9	7	1	1	1	0
Kendall	2	2	2	2	1	1	1	1
Lake	20	14	20	15	12	10	9	5
McHenry	12	13	11	11	7	5	7	3
Will	11	13	12	10	7	3	3	3
Grand Total	142	131	126	123	77	55	46	32

# Most common response being considered is delaying capital projects

	Delay capital projects	Delay equipment purchases	Utilize cash reserves	Hiring freezes	Reduce personnel	Eliminate services	Shared services	Outsource or privatize services
Cook	71	65	55	61	40	27	20	14
DuPage	18	17	17	17	9	8	5	6
Kane	8	7	9	7	1	1	1	0
Kendall	2	2	2	2	1	1	1	1
Lake	20	14	20	15	12	10	9	5
McHenry	12	13	11	11	7	5	7	3
Will	11	13	12	10	7	3	3	3
Grand Total	142	131	126	123	77	55	46	32



## Discussion Questions: Capital project delays

- Which capital projects do you feel are most in jeopardy of being delayed or abandoned?
- Are you aware of efforts (current or planned) to help ensure critical projects advance?
- What assistance isn't currently offered, but would be a difference-maker to allow projects to advance?

# Many municipalities considering hiring freezes / reduction of personnel

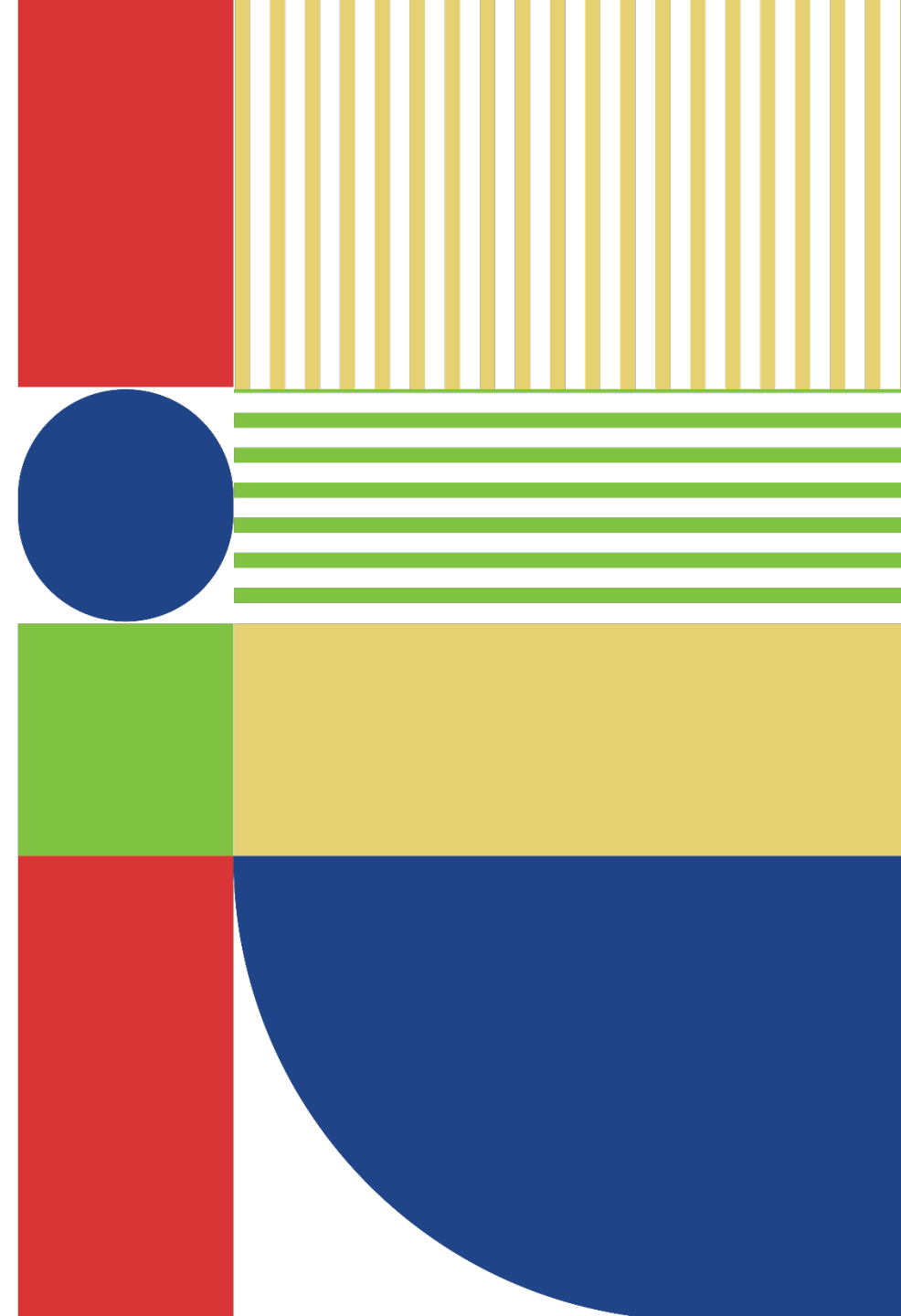
	Delay capital projects	Delay equipment purchases	Utilize cash reserves	Hiring freezes	Reduce personnel	Eliminate services	Shared services	Outsource or privatize services
Cook	71	65	55	61	40	27	20	14
DuPage	18	17	17	17	9	8	5	6
Kane	8	7	9	7	1	1	1	0
Kendall	2	2	2	2	1	1	1	1
Lake	20	14	20	15	12	10	9	5
McHenry	12	13	11	11	7	5	7	3
Will	11	13	12	10	7	3	3	3
Grand Total	142	131	126	123	77	55	46	32

## Discussion Questions: Staff constraints and mitigation measures

- What programs or initiatives might be most affected by staffing changes?
- How might staff reductions impact delivery of services and completion of projects?

**Patrick Day, AICP**  
**[pday@cmap.illinois.gov](mailto:pday@cmap.illinois.gov)**

**Timi Koyejo**  
**[tkoyejo@cmap.illinois.gov](mailto:tkoyejo@cmap.illinois.gov)**





# Appendix

# During the Phase 4 “revitalization period” what is your organization considering to help address revenue loss, while still serving the needs of your community?

	Delay capital projects	Delay equipment purchases	Utilize cash reserves	Hiring freezes	Reduce personnel	Eliminate services	Shared services	Outsource or privatize services
Cook	71	65	55	61	40	27	20	14
DuPage	18	17	17	17	9	8	5	6
Kane	8	7	9	7	1	1	1	0
Kendall	2	2	2	2	1	1	1	1
Lake	20	14	20	15	12	10	9	5
McHenry	12	13	11	11	7	5	7	3
Will	11	13	12	10	7	3	3	3
Grand Total	142	131	126	123	77	55	46	32