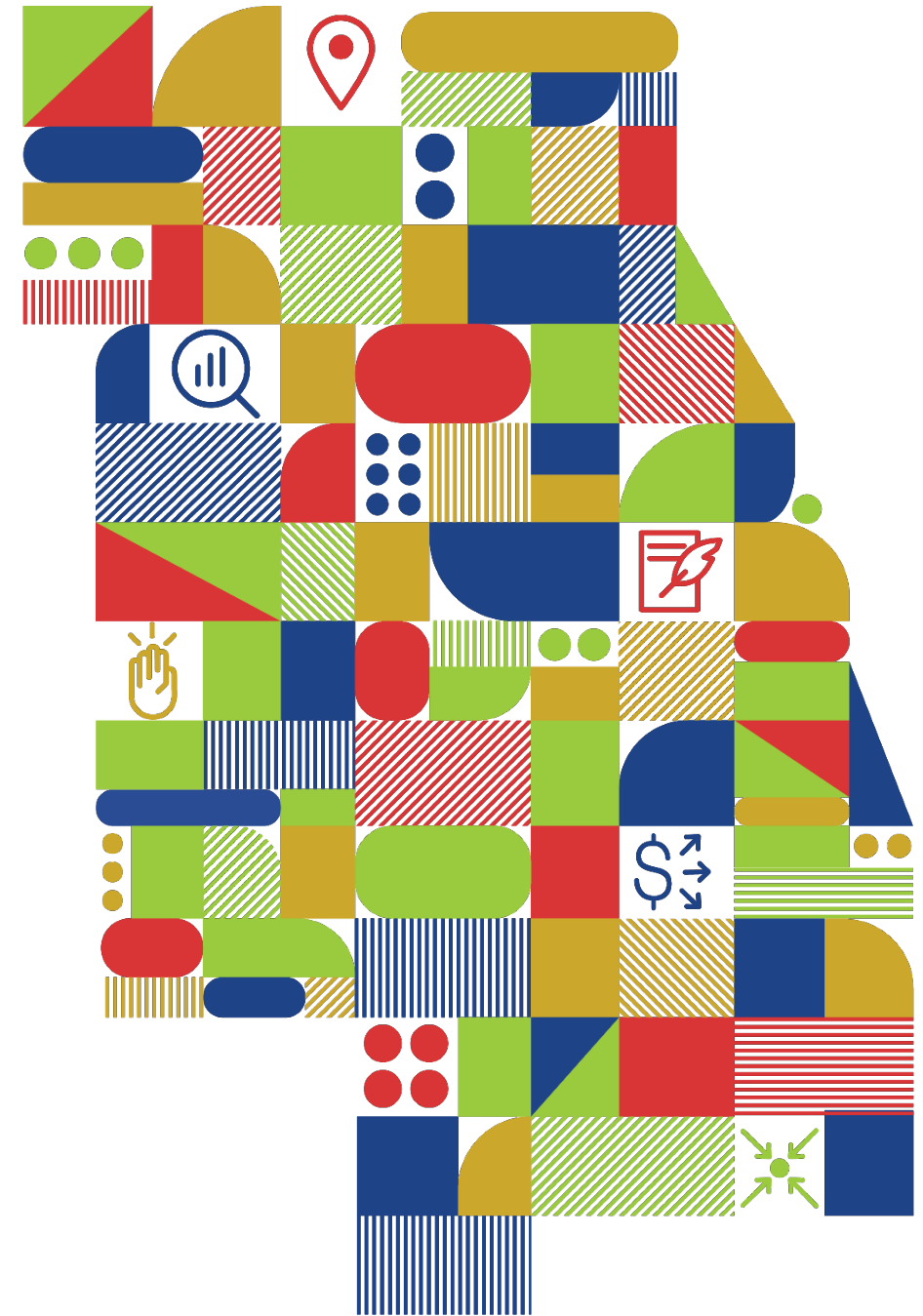




# Pavement Performance Targets

Todd Schmidt  
February 26, 2021





# Asset condition targets

## Transportation Performance Management

Assessing Pavement Condition for the National Highway Performance Program (NHPP) and Bridge Condition for the NHPP Final Rule (PM2)

Pavement targets - update

Bridge targets – no change

# Background

## Pavement performance measures

1. Percent of interstate system in good condition
2. Percent of interstate system in poor condition
3. Percent of non-interstate NHS in good condition
4. Percent of non-interstate NHS in poor condition

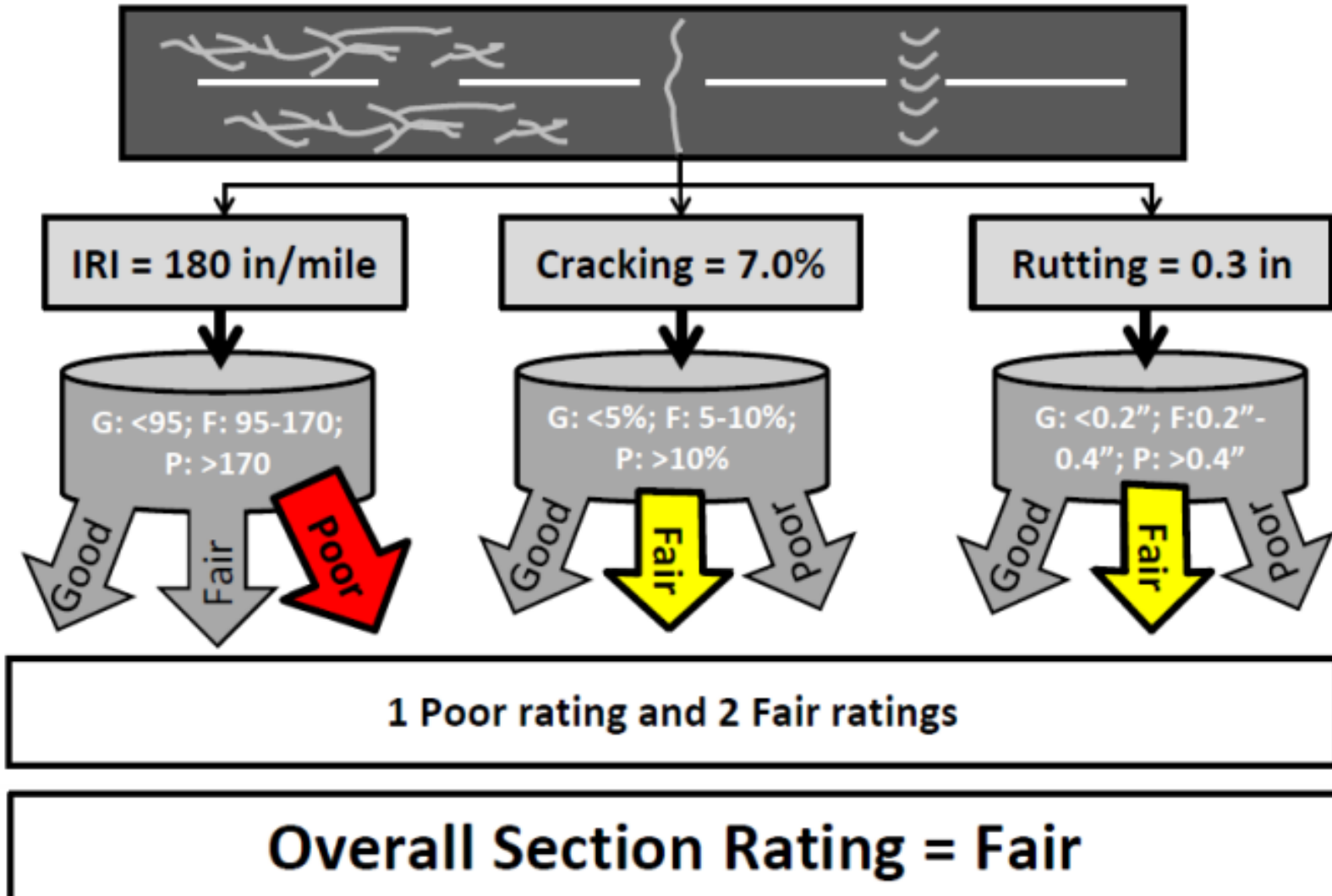
State DOTs 2-year and 4-year targets  
Mid-performance period report

MPO 4-year targets

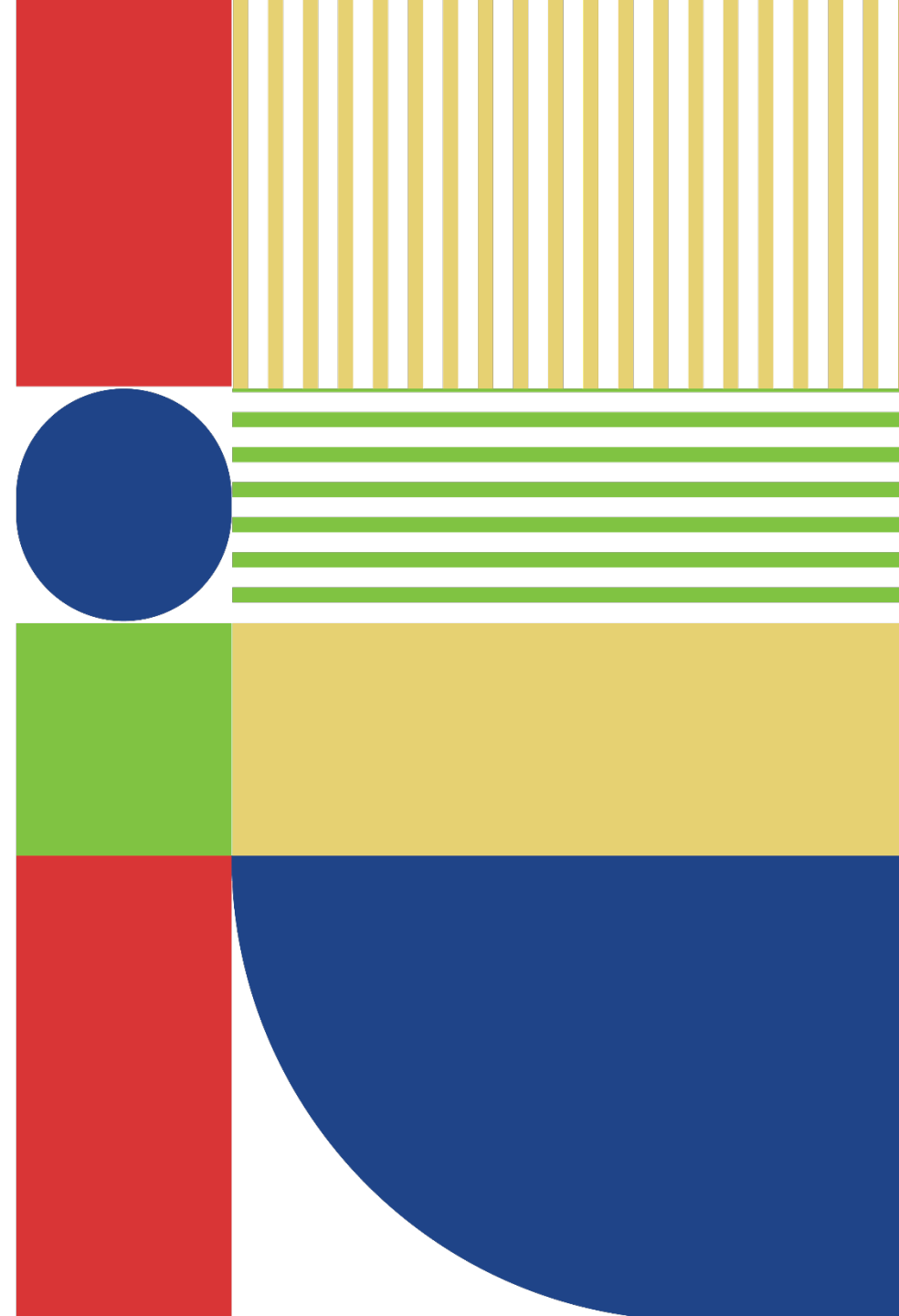
# Pavement distresses and thresholds

	Good	Fair	Poor
<b>IRI (inches/mile)</b>	<95	95-170	>170
<b>Rutting (inches)</b>	<0.20	0.20-0.40	>0.40
<b>Faulting (inches)</b>	<0.10	0.10-0.15	>0.15
<b>Cracking (%)</b>	<5	5-20 (asphalt) 5-15 (JCP) 5-10 (CRCP)	>20 (asphalt) >15 (JCP) >10 (CRCP)

# Example condition calculation



# Pavement Performance Targets



# CMAP region pavement targets

Performance Measure	Baseline (2017) <sup>1</sup>	2-Year Condition	CMAP 4-Year Target <sup>1</sup>	IDOT Statewide 4-Year Adjusted Target
% of Interstate pavement in good condition	57.1%	61.3%	58.9%	61.0%
% of Interstate pavement in poor condition	1.8%	0.6%	0.0%	2.0%
% of non-Interstate NHS in good condition	15.5%	18.6%	17.7%	21.0%
% of non-Interstate NHS in poor condition	31.0%	9.6%	28.5%	9.0%

1 – Adopted in 2018, full distress data not available, based on IRI.

# Next steps

Recommendation: Support statewide Interstate and non-Interstate pavement targets

IDOT's transportation asset management plan

CMAP's pavement management system project

Other regional efforts

Timeline: CMAP Board and MPO Policy Committee approvals in March





[www.cmap.illinois.gov](http://www.cmap.illinois.gov)

Todd Schmidt  
[tschmidt@cmap.illinois.gov](mailto:tschmidt@cmap.illinois.gov)