


Illinois Accessibility Code

Effective October 23, 2018



**Capital
Development
Board**
Building a Better Illinois

Presented By:
Felicia Burton, Accessibility Specialist, CDB

1

History of IAC

STANDARD
SPECIFICATIONS FOR
FACILITIES FOR THE
HANDICAPPED

Effective Date: 1, 1968

ACCESSIBILITY STANDARDS
ILLUSTRATED

CAPITAL DEVELOPMENT BOARD
STATE OF ILLINOIS

DONALD S. GLENDEN
EXECUTIVE DIRECTOR

ILLINOIS
ACCESSIBILITY
CODE

EFFECTIVE
MAY 1, 1988

State of Illinois
CAPITAL DEVELOPMENT BOARD

ILLINOIS
ACCESSIBILITY
CODE

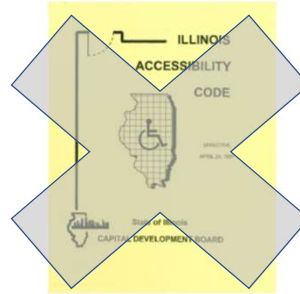
EFFECTIVE
APRIL 24, 1987

State of Illinois
CAPITAL DEVELOPMENT BOARD

2

IAC Effective Date

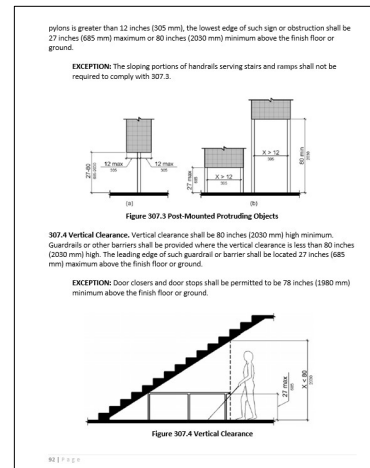
The New Illinois Accessibility Code was accepted at the October 16, 2018 Joint Committee on Administrative Rules and has been Effective since October 23, 2018.



3

IAC Format

- **Figures (Informational Only)**
- **All dimensions stated in text**



4

Table of Contents

Chapter 1: Application and Administration

Chapter 2: Scoping Requirements

Chapter 3: Building Blocks

Chapter 4: Accessible Routes

Chapter 5: General Site And Building Elements

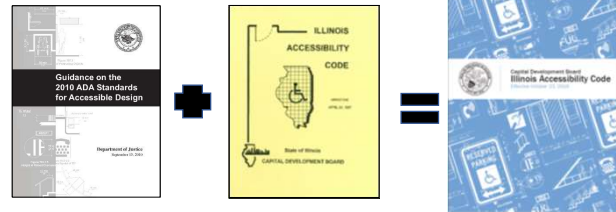
Chapter 6: Plumbing Elements And Facilities

Chapter 7: Communication Elements And Features

Chapter 8: Special Rooms, Spaces and Elements

Chapter 9: Built-In Elements

Chapter 10: Recreation Facilities



5

Definitions

- IAC Section 106

6

IAC Applicability

- Public Facilities
- Multi-Story Housing

7

IAC Applicability

- **New Construction**
- **Alterations**
- **Additions**
- **Historic Preservation, Restoration or Reconstruction**

8

It's The LAW

**IAC + EBA = Force of a Building Code
= Law in State of Illinois**

9

CDB's Role

To Interpret the IAC

10

Enforcement

- Enforced by the Attorney General's Office – Disability Rights Bureau
- Offices in Springfield and Chicago

11

Minimum Requirements

Any governmental unit may enact more stringent requirements to increase and facilitate access to the built environment by individuals with disabilities.

12

Statement of Compliance

- **Drawings examined for compliance with IAC by AHJ**
 - **N/A if cost is <\$50,000**
- **Architect/Engineer seal - alternative**

13

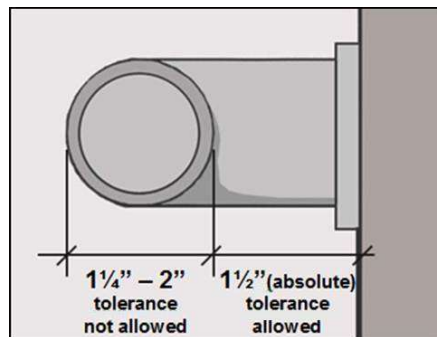
No Waiver

The requirements of this Code cannot be waived by any party.

14

Construction Tolerances

Dimensions can be subject to conventional industry tolerances



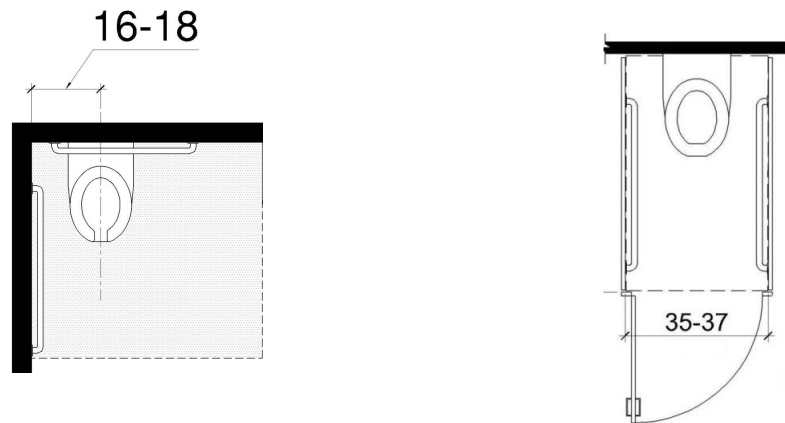
15

Conventions

- Dimensions – range instead of absolute dimension where possible
- Construction and Manufacturing Tolerances
- Scoping Percentages/Ratios (round up)
- Figures – informational; text governs

16

Ranges Instead of Absolute Dimensions



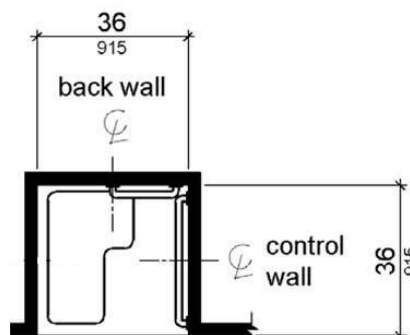
Water closet centerline (16-18")

Width of ambulatory accessible stall (35"- 37")

17

Some Absolute Dimensions Remain

Example: Transfer Shower Stall (36" x 36")



(measured to center points; manufacturing tolerances recognized)

18

Referenced Standards

- Powered Doors (ANSI/BHMA A156.10 & A156.19)
- Elevators and Lifts (ASME A17.1 & A18.1)
- Alarms (NFPA 72)
- Play Surfacing & Equipment (ASTM standards)

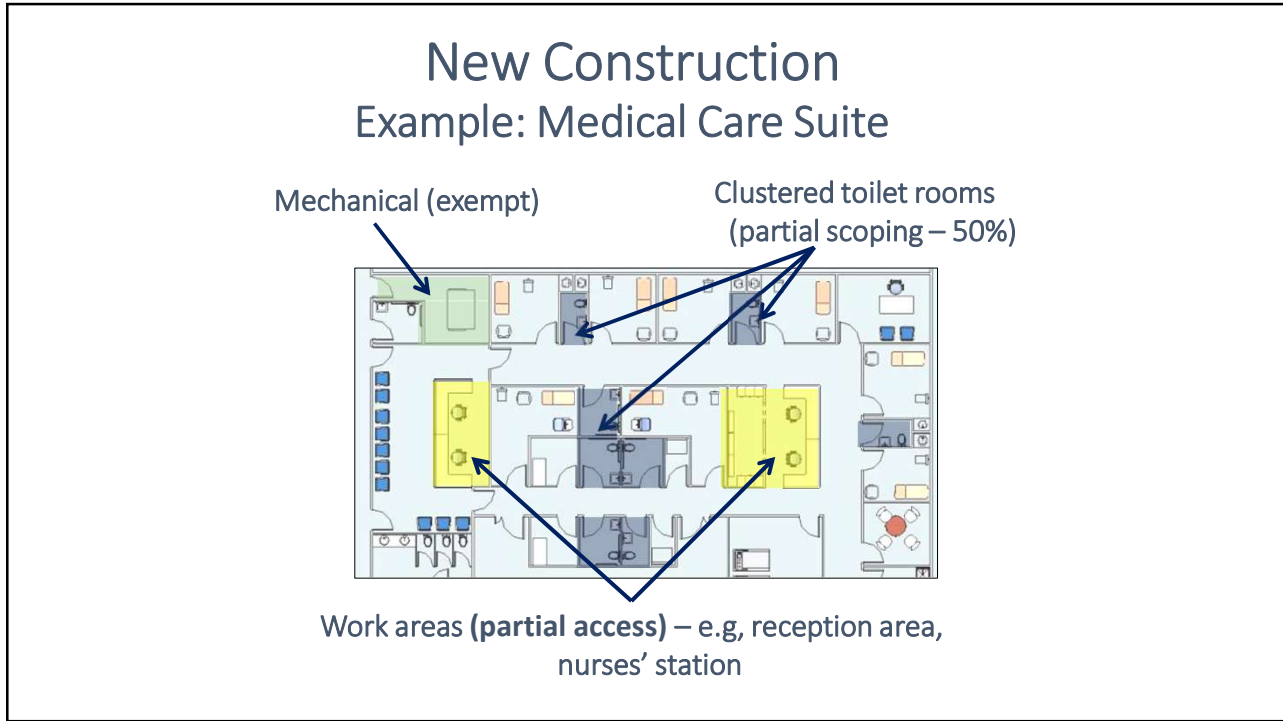
19

New Construction

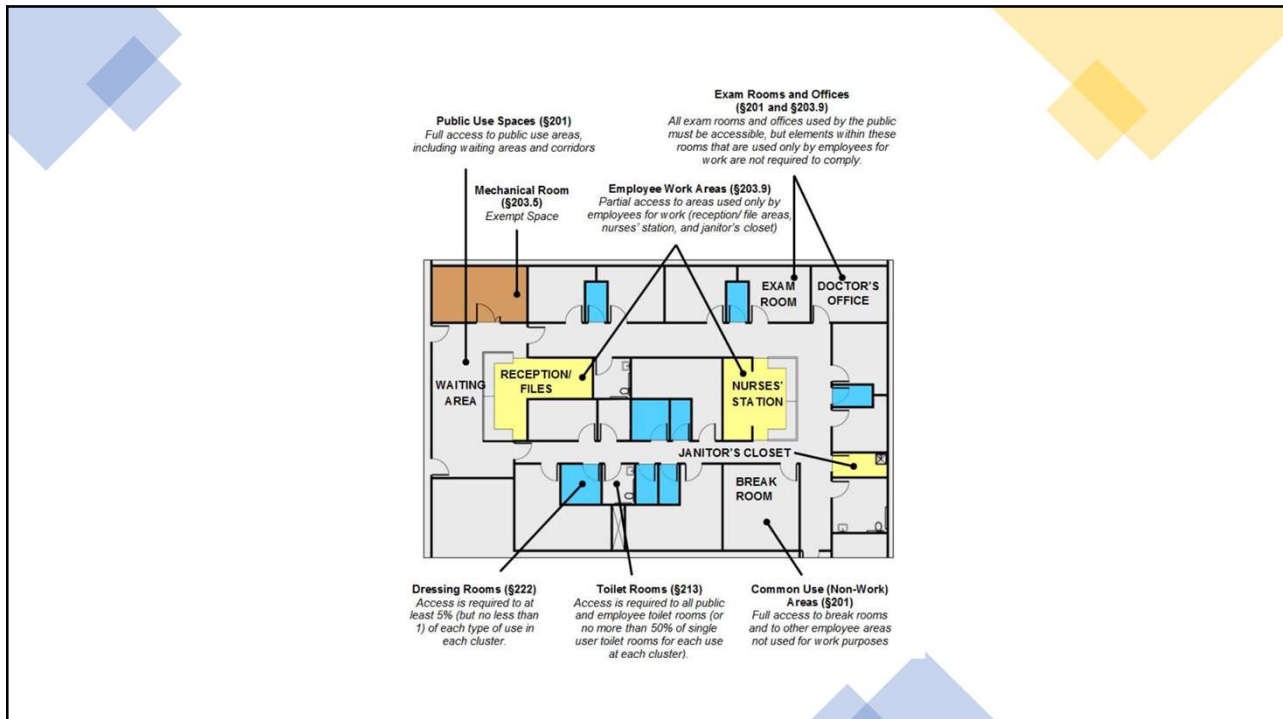
All areas must comply except:

- Exempted structures/ spaces
- Employee Work Areas
- Partially scoped spaces

20



21



22

General Exceptions

- Construction Sites



- Raised Areas (security, life/fire safety)



- Spaces Accessed by Ladders, Catwalks, Crawl Spaces, Narrow Passageways



- Machinery Spaces



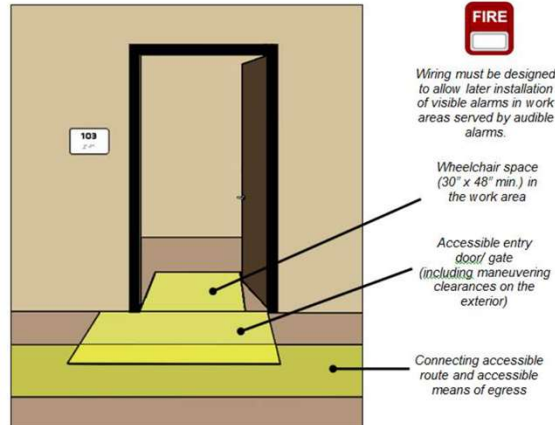
23

General Exceptions Employee Work Areas

- Under 300 square feet, Elevated 7 inches
- Excludes Raised Courtroom Stations

24

General Exceptions Employee Work Areas



Note: Signs and other elements provided outside the work area must comply with the requirements for those elements.

25

General Exceptions

Single Occupant Structures (e.g., toll booths)

Accessed only by below-grade passageways or elevated above standard curb height



26

General Exceptions

Detention/Correctional Residential Facilities

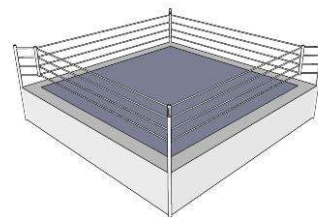
- Common Use Spaces – Don't serve Accessible Cells or Dwelling Units

27

General Exceptions

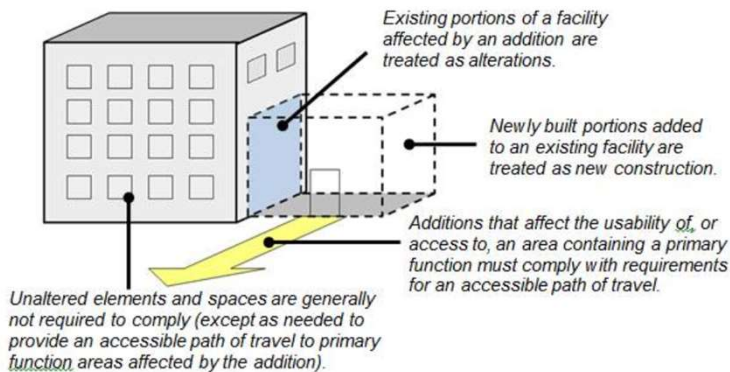
Recreation Facilities

- Raised structures used solely for refereeing, judging, or scoring a sport
- Raised boxing/ wrestling rings
- Water slides and raised diving boards/ platforms
- Animal containment areas not open to the public



28

Additions



- Entry from existing building at all common levels
- Accessible Toilet Rooms

29

Alterations

- A change in a building or facility that affects or could affect the usability of a building or facility or portion thereof

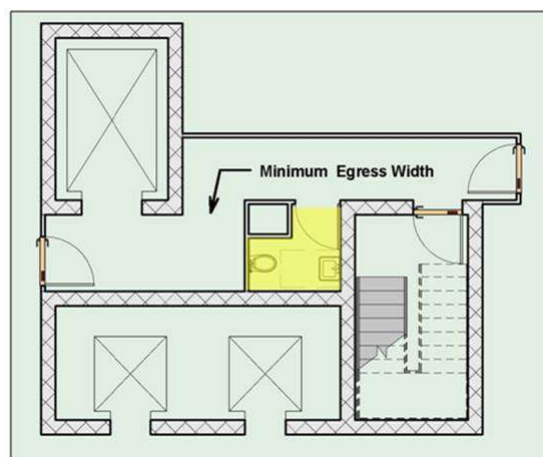
30

Alterations

- Structurally Impracticable
- Technically Infeasible
- Multi-Story Housing
- Historic Buildings

31

Example of Technical Infeasibility



32

Alterations



**Where renovation = more extensive,
Technical Infeasibility = less likely**

33

Alterations

Primary Function Area

A "Primary Function" is a major activity for which the facility is intended.

Areas that contain a primary function include:

- the customer services lobby of a bank
- the dining area of a cafeteria
- the meeting rooms in a conference center

34

Alterations

Primary Function Area

Alterations made to provide an accessible Path of Travel to the altered area will be deemed disproportionate to the overall Alteration when the cost exceeds 20% of the cost of the Alteration to the Primary Function Area.

35

Alterations

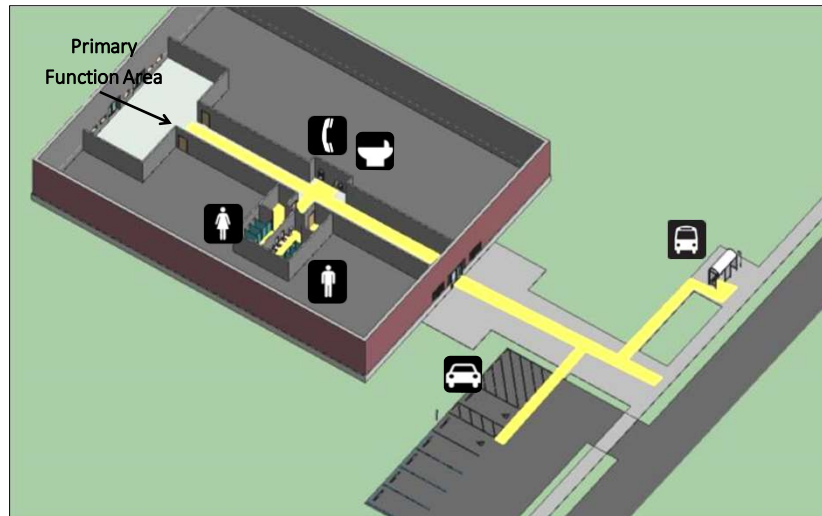
Prioritization

1. an accessible entrance
2. an accessible route to the primary function area
3. restroom access
4. an accessible telephone
5. an accessible drinking fountain
6. access to other elements such as parking and storage

36

Alterations

Example of “path of travel”



37

Reduction in Access

Cannot Decrease or have the Effect of Decreasing Accessibility

38

Alterations - Parking Lots

Includes:

- Sealcoating
- Resurfacing
- Remarking
- Fencing
- Curbs
- Walks
- Landscaping



39

Alterations to Historic Buildings and Facilities

40

Alterations to Qualified Historic Buildings

- *Individually* listed in or eligible for listing in the National Register of Historic Places,
- A *"contributing"* building or site in a National Register Historic District

41

Alterations to Qualified Historic Buildings

- A building or site designated or eligible as a historic or architectural landmark by a local Landmarks Commission or local Historic Preservation Commission, and
- Buildings which undergo historic reconstruction.

42

Alterations to Qualified Historic Buildings

- Accessible Route
- Displays
- Toilet Facilities
- Drinking Fountains
- Parking Spaces – Accessible Route From Parking
- Alternative Requirements – 202.5.4

43

Governmental Units in Public Facilities

- *shall not enter into a new or renewal agreement to lease, rent, or use, in whole or in part, any [public facility](#) which does not comply with this [Code](#).*

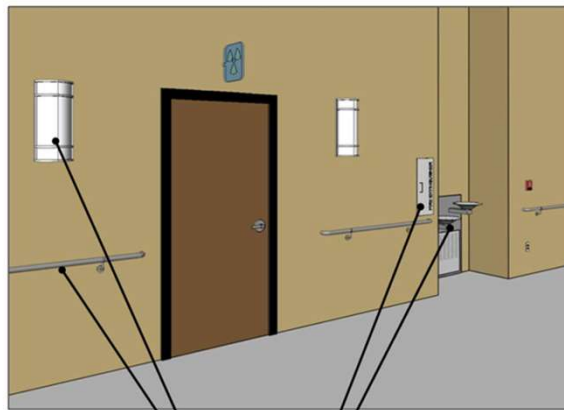
44

Protruding Objects

45

Protruding Objects

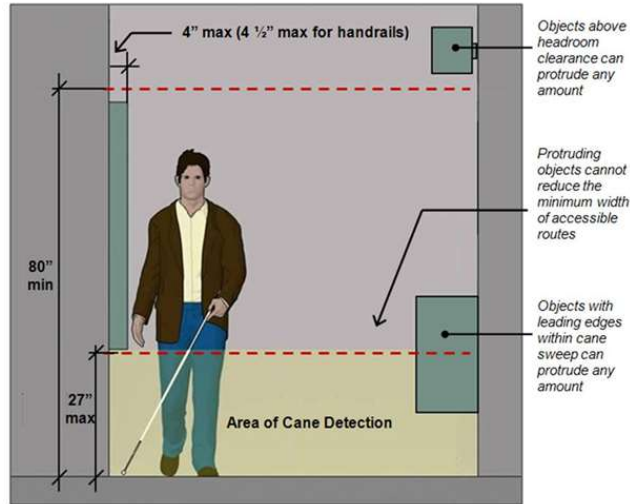
Example



Sconces, handrails, cabinets, drinking fountains and other elements that project into circulation paths must comply with provisions for protruding objects (unless they are located within cane sweep or above headroom clearance). Requirements for protruding objects apply to all interior and exterior circulation paths of sites. They are not limited to hallways and corridors and apply equally to circulation paths in rooms and spaces.

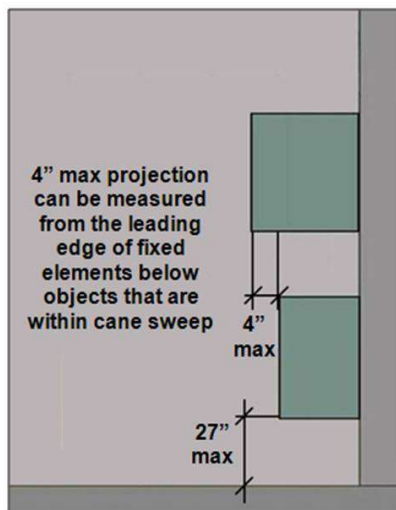
46

Protruding Objects



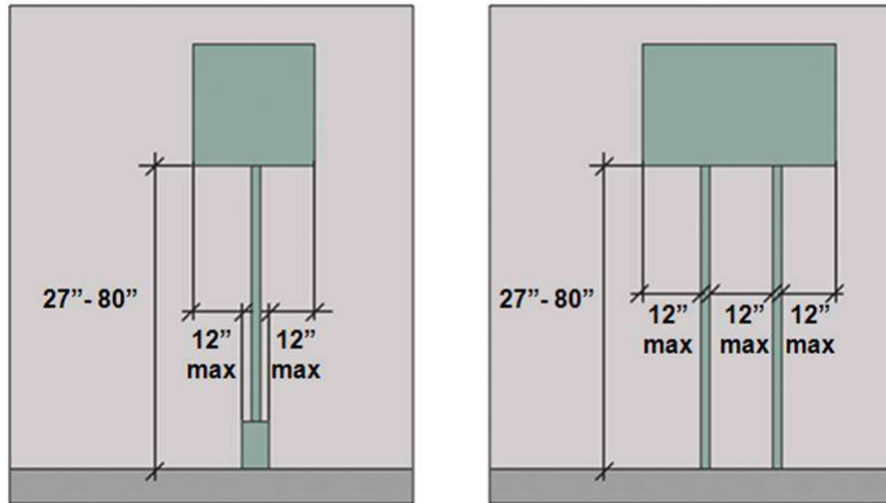
47

Protruding Objects



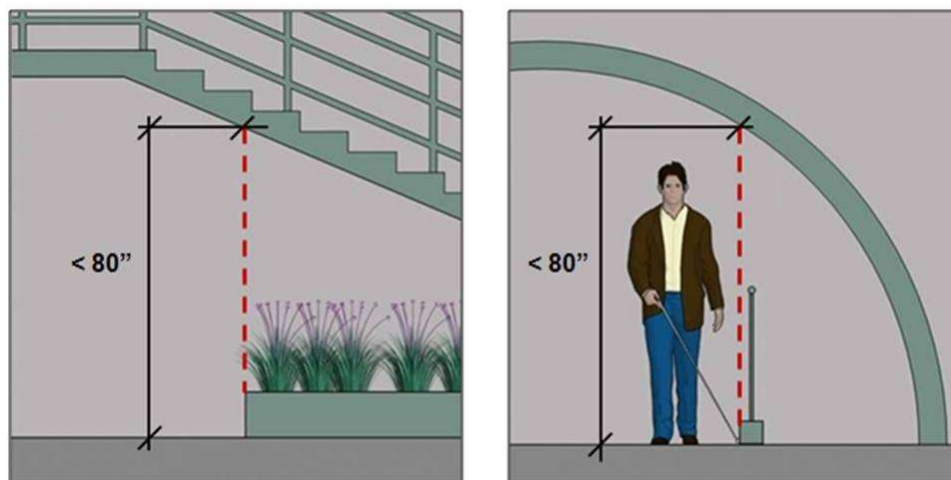
48

Protruding Objects



49

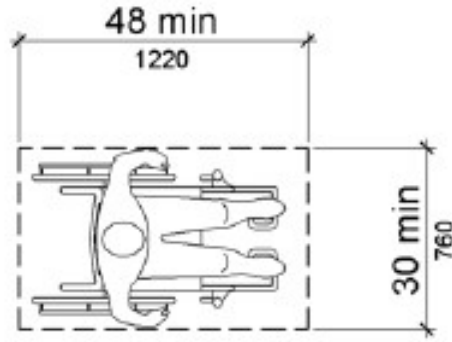
Vertical Clearance



50

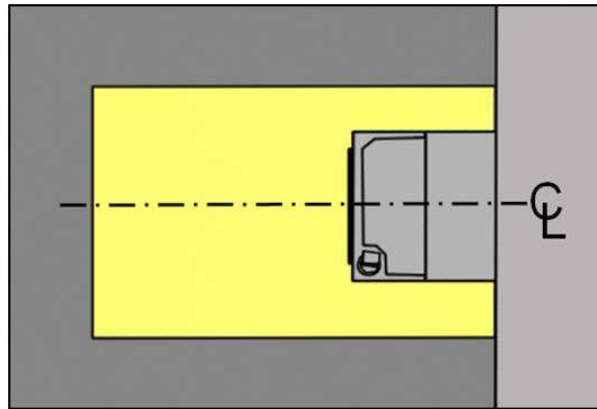
Clear Floor Space

Minimum Space



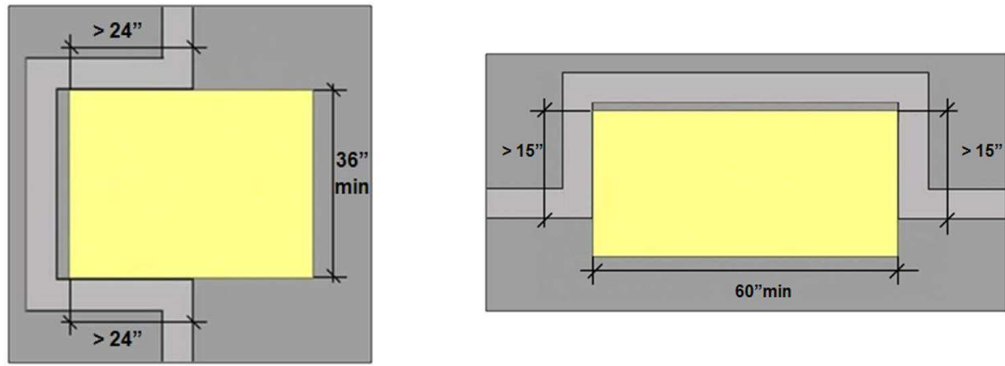
51

Clear Floor Space



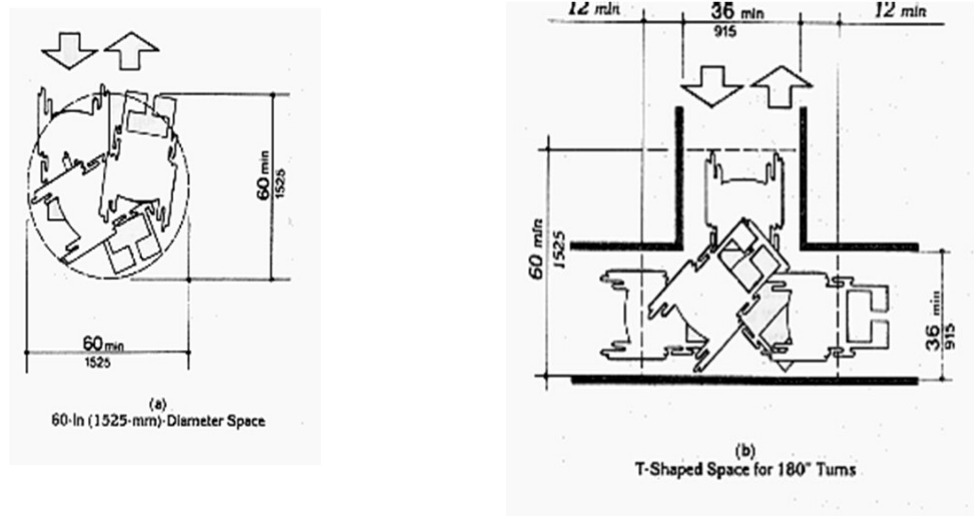
52

Clear Floor Space



53

Turning Space



54

Turning Space

Turning space is required in these accessible rooms and spaces:

- Toilet and Bathing Facilities
- Dressing, Fitting, and Locker Rooms
- Transient Lodging Guest Rooms
- Dwelling Units (all rooms on an accessible route)
- Patient Bedrooms
- Holding and Housing Cells
- Saunas and Steam Rooms
- Raised courtroom stations served by ramps or lifts with entry ramps
- Certain recreation spaces (amusement ride load/ unload areas, fishing piers and platforms, play components, and shooting facilities)

55

Drinking Fountains

56

Drinking Fountain

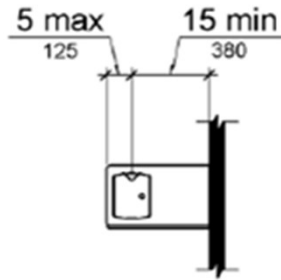


Figure 602.5
Drinking Fountain Spout Location

57

Drinking Fountain



58

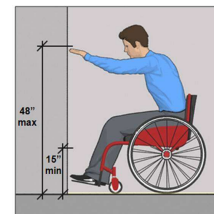
Reach Ranges and Operable Parts

59

Forward Reach Range

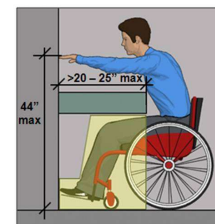
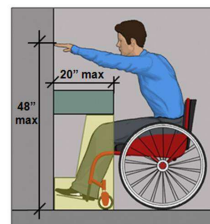
Unobstructed:

- High Reach - 48" max
- Low Reach - 15" min



Obstructed High Reach:

- Reach Depth 20" max –
 - High Reach – 48" max
- Reach Depth > 20" –
 - High Reach – 44" max
 - Reach Depth – 25" max

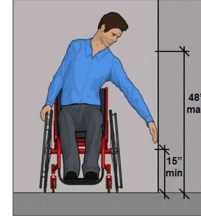


60

Side Reach Range

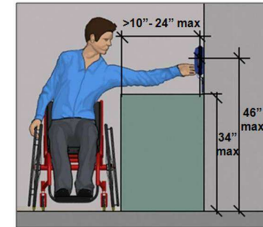
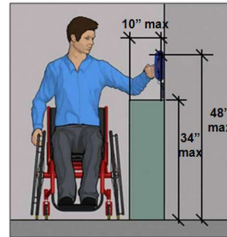
Unobstructed:

- High Reach - 48" max
- Low Reach - 15" min



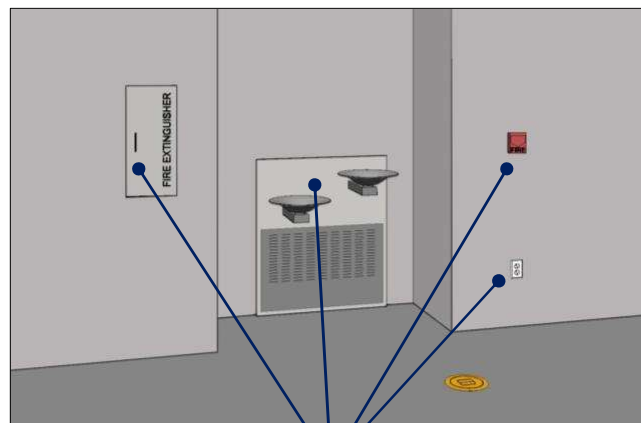
Obstructed High Reach:

- Height of Obstruction - 34" max
- Depth of Obstruction - 24" max
- Reach Depth 10" max -
 - High Reach - 48" max
- Reach Depth > 10" -
 - High Reach - 46" max
 - Reach Depth - 24" max



61

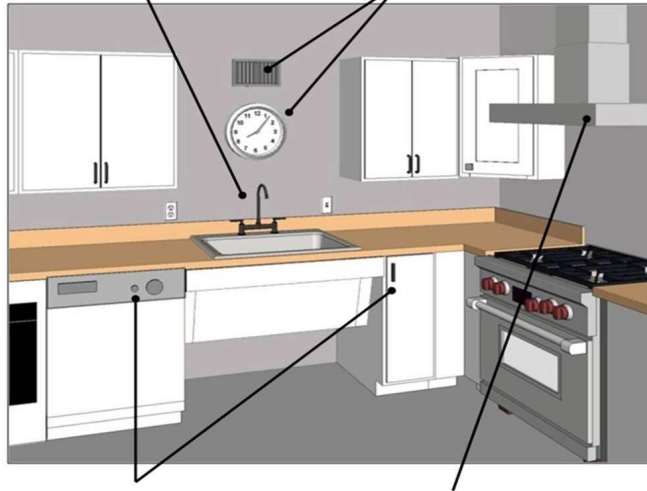
Operable Parts



Examples of Operable Parts

62

Operable Parts



Examples of Operable Parts in Kitchens

63

Operable Parts

- Operability
- Reach range
- Clear floor space
- Accessible route connection



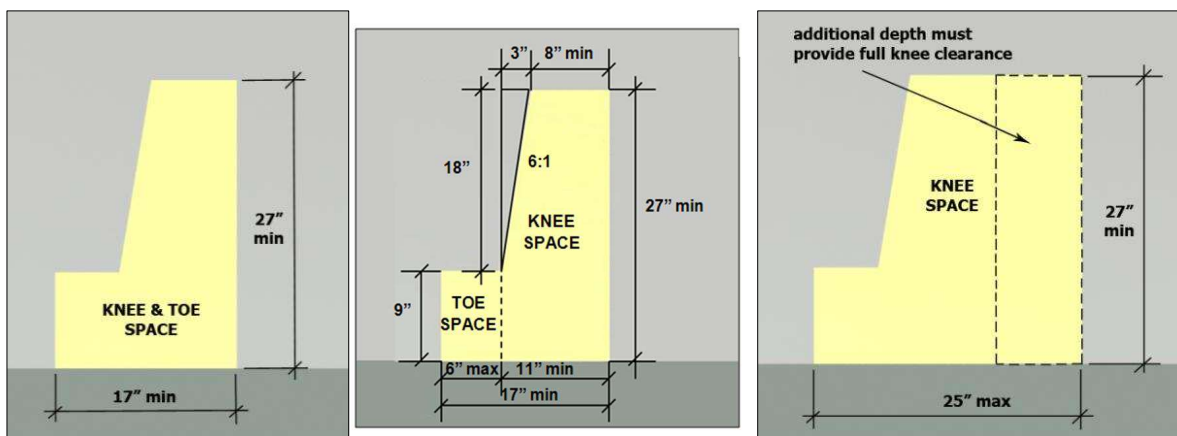
64

Clear Floor Space Knee and Toe Clearances



65

Operable Parts



17" min. depth at DFs, lavs, sinks, dining/work surfaces

25" max. depth (all elements)

66

Accessible Routes

67

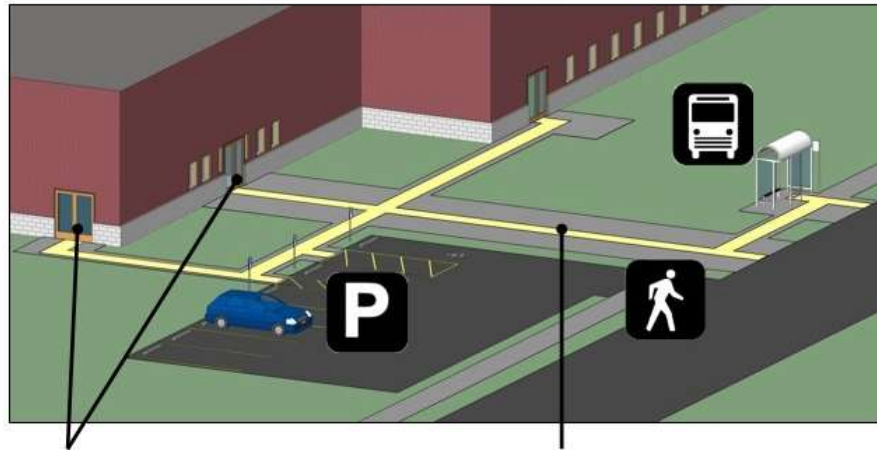
Accessible Routes

Required Accessible Routes

- Site Arrival
- Within Sites
- Between Stories (elevator exceptions)
- Space and Elements
- Specific Spaces (restaurants & cafeterias, performance areas, press boxes, employee work areas, recreation facilities)

68

Accessible Routes



69

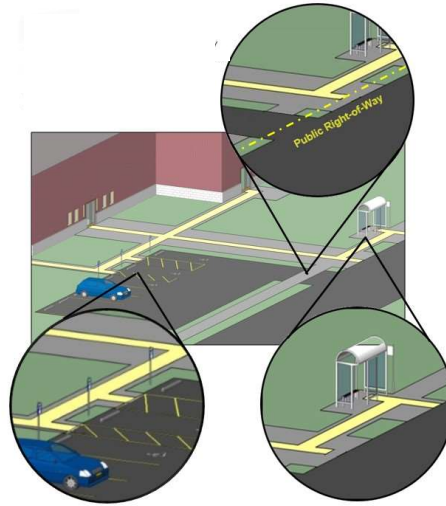
Accessible Routes

At least one accessible route to building entrances from:

- Streets and Sidewalks
- Transportation Stops
- Parking
- Passenger Loading Zones (where provided)

70

Accessible Routes



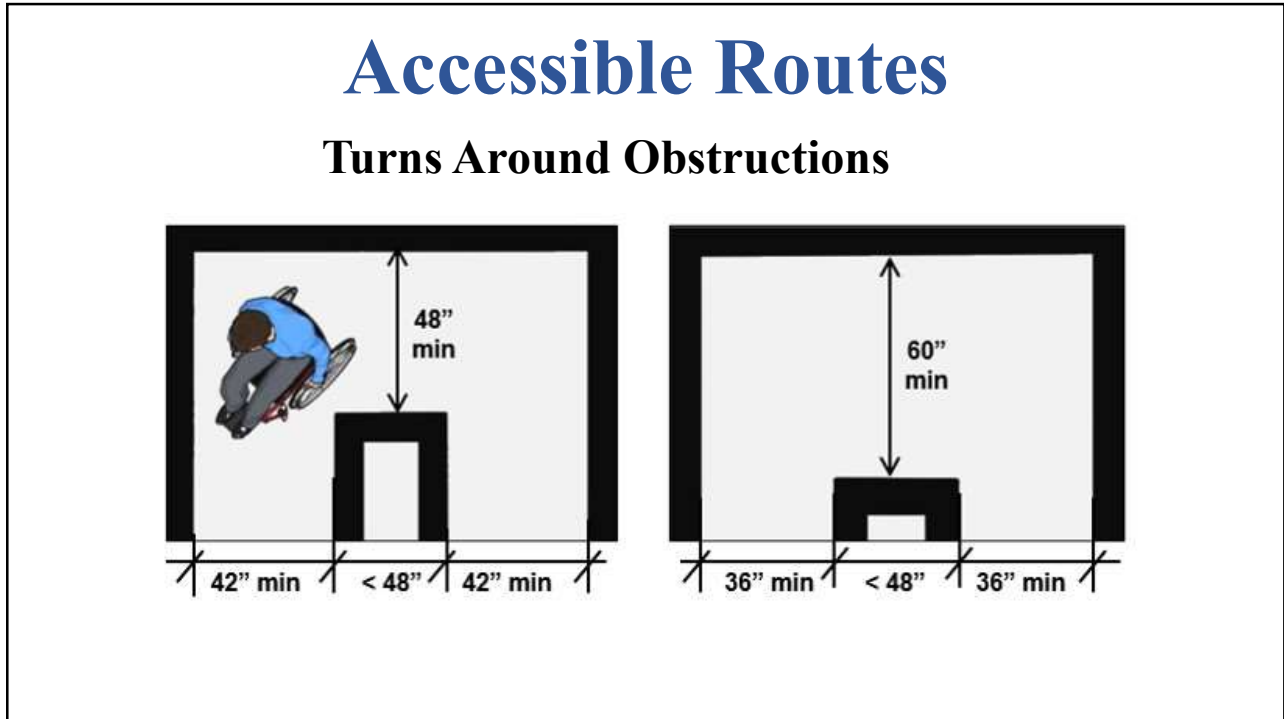
71

Accessible Routes Clarifications:

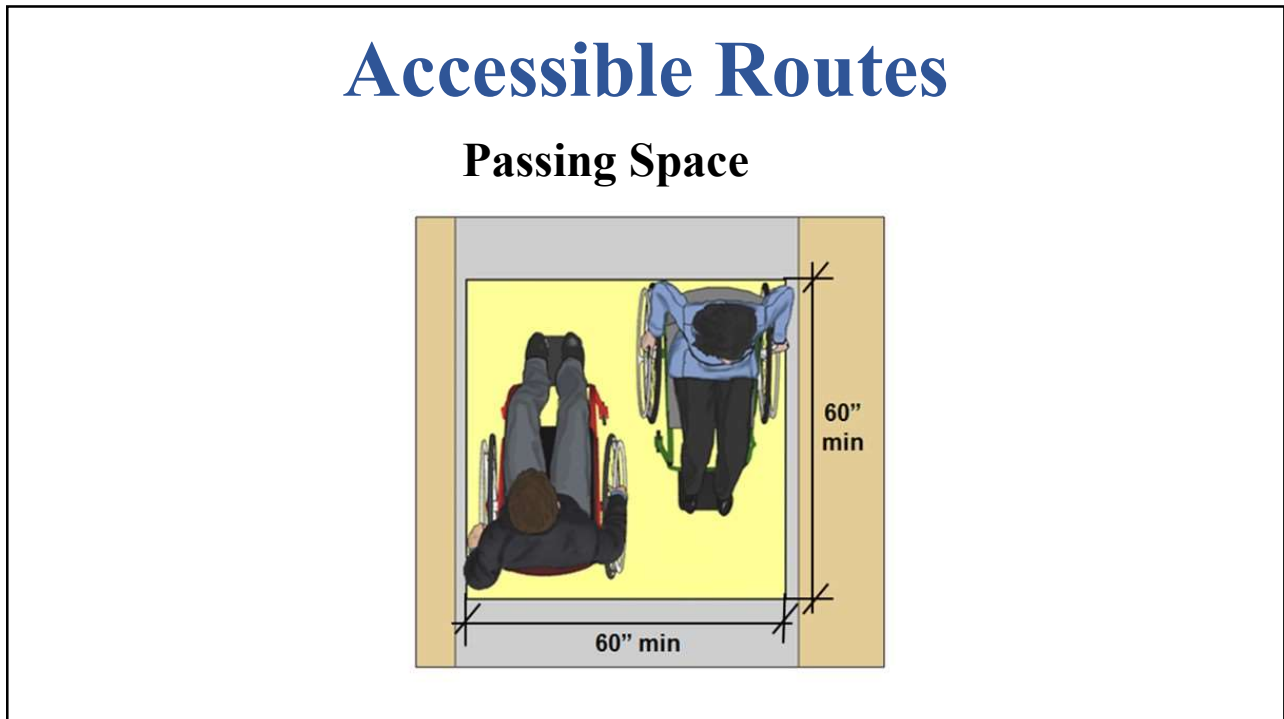
- Accessible Route not required if no pedestrian route provided.
- If circulation path is interior, Accessible Route must be interior



72



73



74

Accessible Route

Exception NOT allowed for:

- Shopping Centers/ Malls
- Professional Offices of Health Care Providers
- Terminal, Depots, or Stations used for Public Transportation
- State or Government Facilities

75

Multi-Story Buildings and Facilities

Accessible Route

Additional Exceptions (206.2.3)

- Detention and Correctional Facilities
- Residential Facilities (Not including Multi-Story Housing)
- Multi-Story Transient Lodging
- Air Traffic Control Tower Cab
- Archival Storage
- Business/Mercantile Product Storage

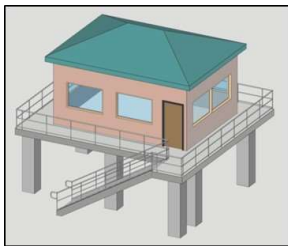


76

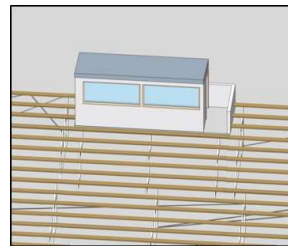
Press Boxes

Accessible Route

- 500 sq ft or less (aggregate)
- Elevated 12' or more (free standing)
- Or in bleachers entered on 1 level



Free-Standing Press Box



Bleacher-Mounted Press Box

77

Entrances

Scoping:

At least 60% of Public Entrances to Comply

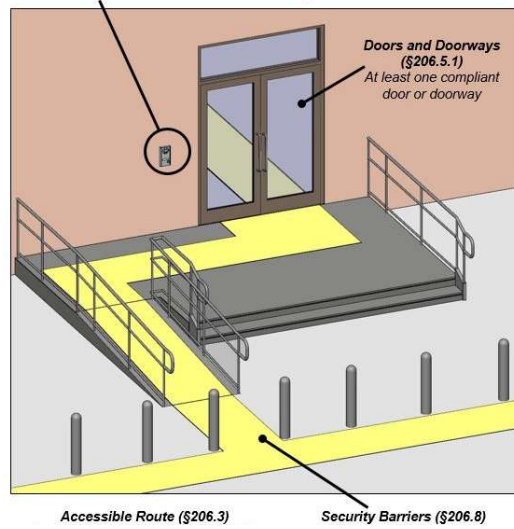
At least 50% of Public Entrances – Multi-Story Housing

Also:

- direct access from parking structures (all)
- direct access from tunnels or elevated walkways
- different fixed routes in transit facilities
- entrances to different tenant spaces
- restricted or secured entrances (at least 1)

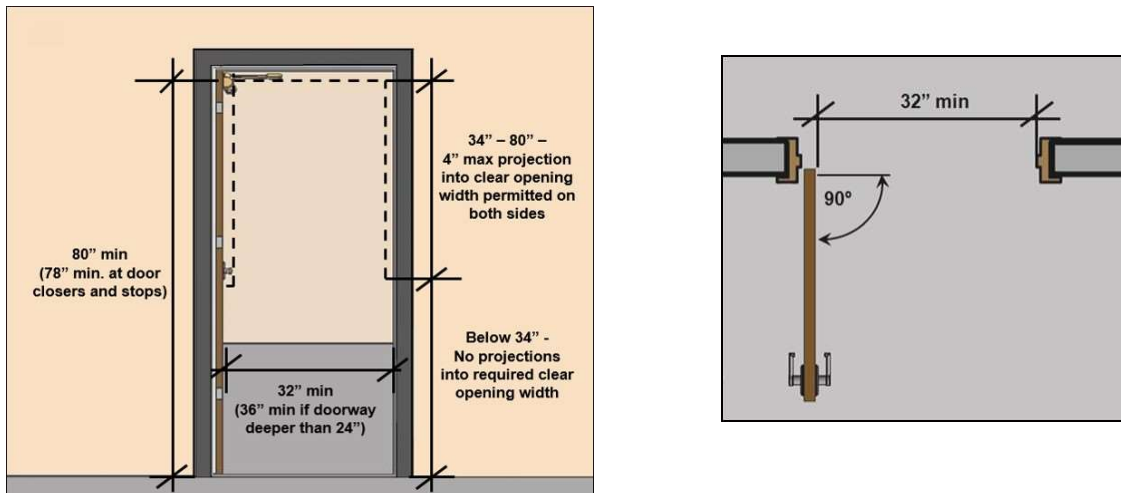
78

Entrances



79

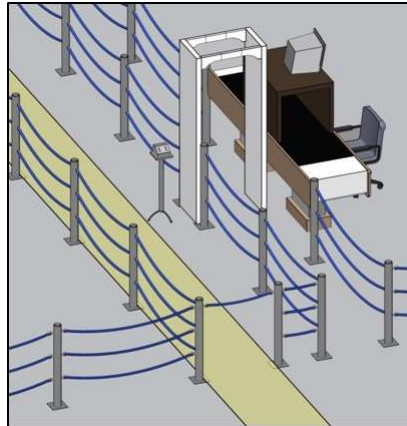
Clear Width (32" min.)



80

Security Barriers

Alternative route permitted at security screen devices



81

Maneuvering Clearances

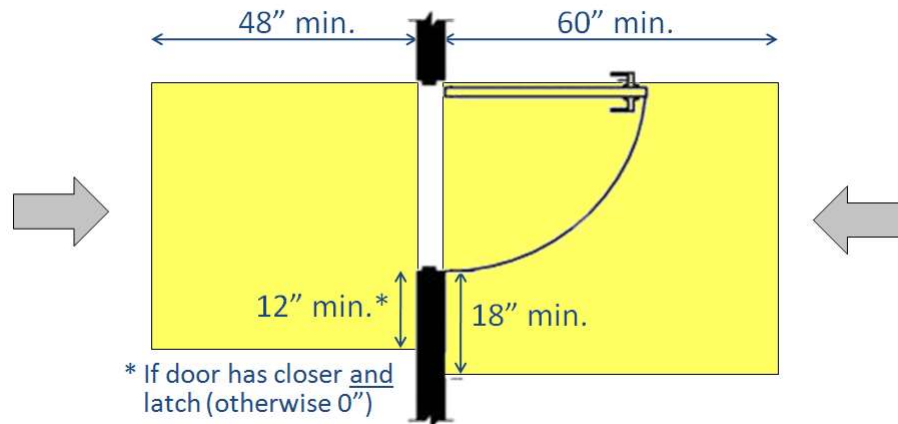
**Minimum space for positioning/
maneuvering at doors**



82

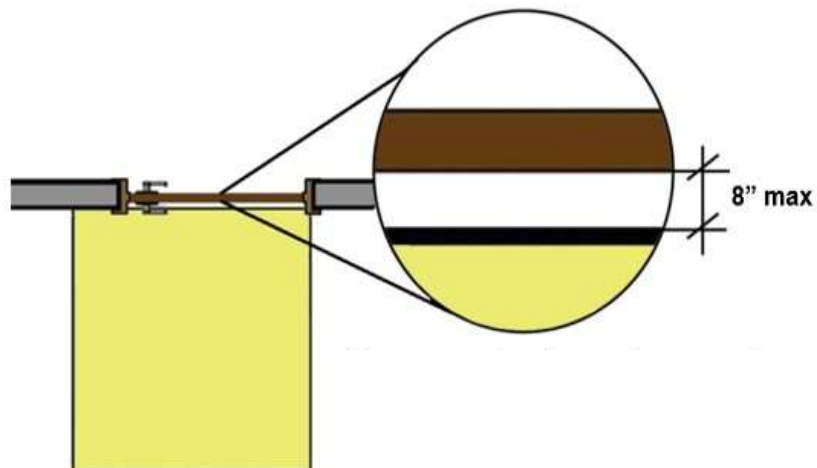
Maneuvering Clearances

Forward Approach



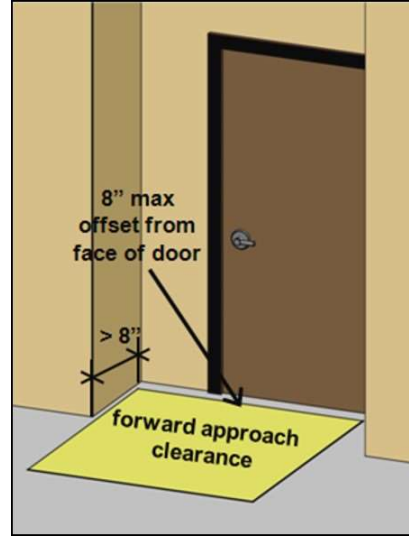
83

Maneuvering Clearances



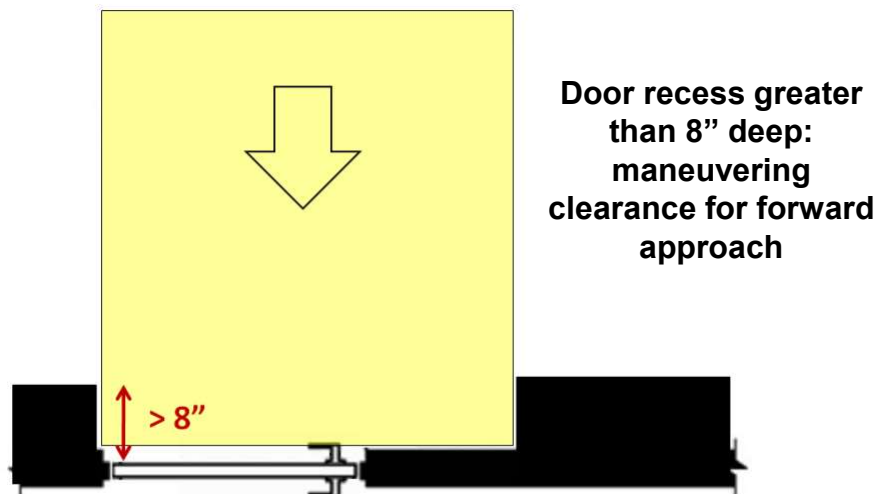
84

Maneuvering Clearances



85

Maneuvering Clearances



86

Maneuvering Clearances



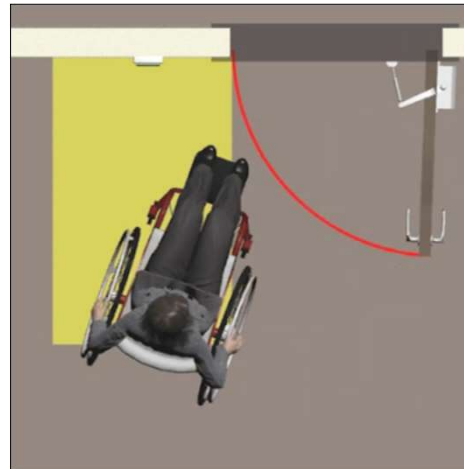
Recess: 8" max.



Recess: greater than 8"

87

Controls



Wheelchair space at controls must be outside the door swing

88

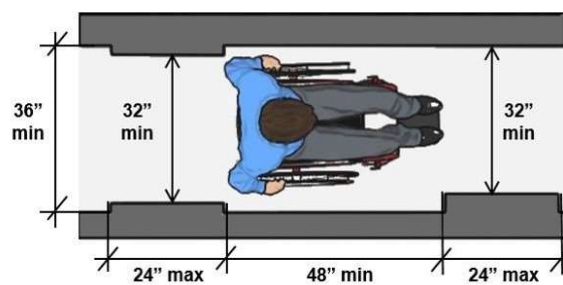
Controls



**Control on adjacent wall/post
can provide easier access**

89

Walking Surfaces

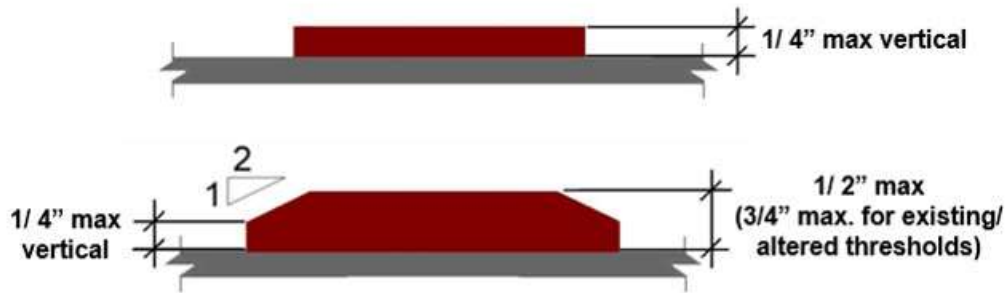


**Minimum Separation (48") between
reduced clear widths**

90

Surfaces

Thresholds



Note: vertical edge must be located below bevel, not above

91

Surfaces

Must be Firm, Stable & "Slip-Resistant"



**Loose materials generally not compliant
(unless properly treated)**

92

Surfaces

Slip-resistance generally required



Specific value (coefficient of friction) not specified

93

Surfaces

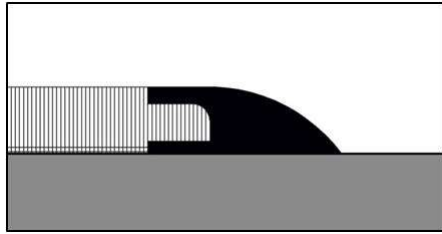
Carpet



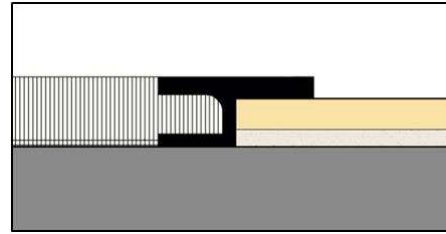
94

Surfaces

Carpet



1/2" max height, 1:2 max beveled edge

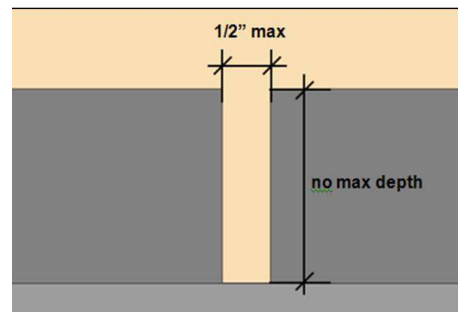
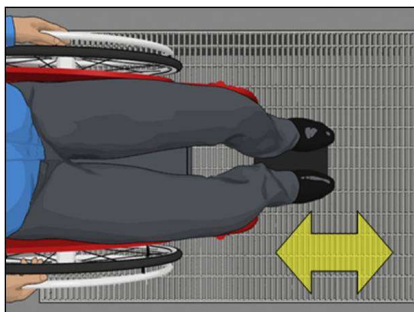


Changes in level 1/4" max high permitted vertical edge

95

Surfaces

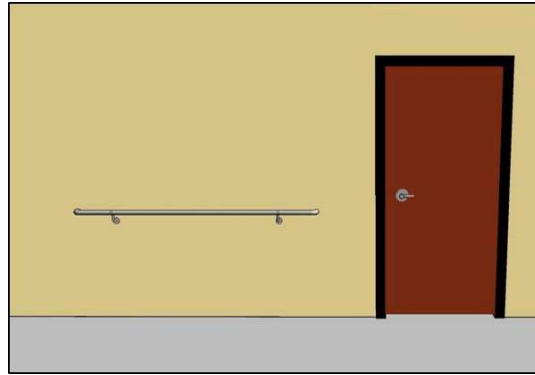
Openings



96

Handrails

- 34" to 38 " High
- Continuous Gripping Surface

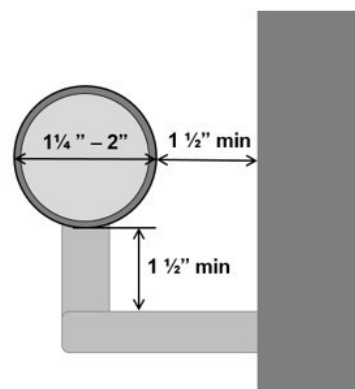


97

Handrails

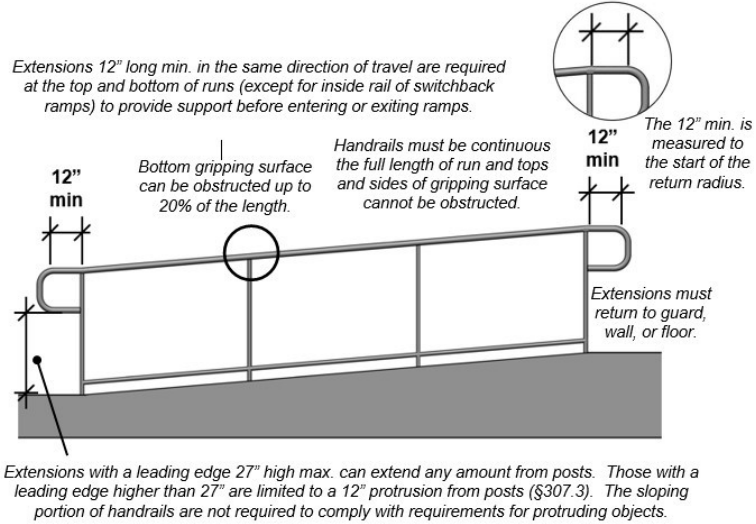
Ramps, Stairs, and Walkways

- Knuckle Clearance: 1 ½" min.
- Diameter: 1 ¼" min. – 2" max.
- Applies to outside diameter



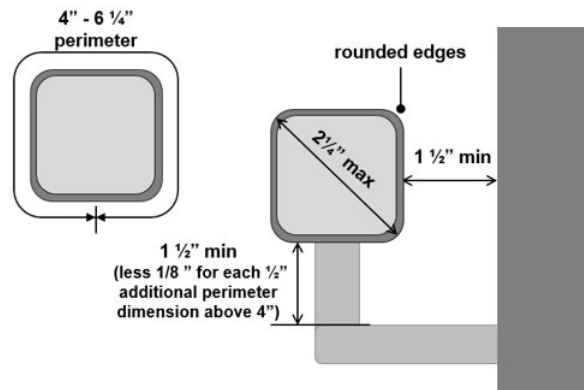
98

Handrails



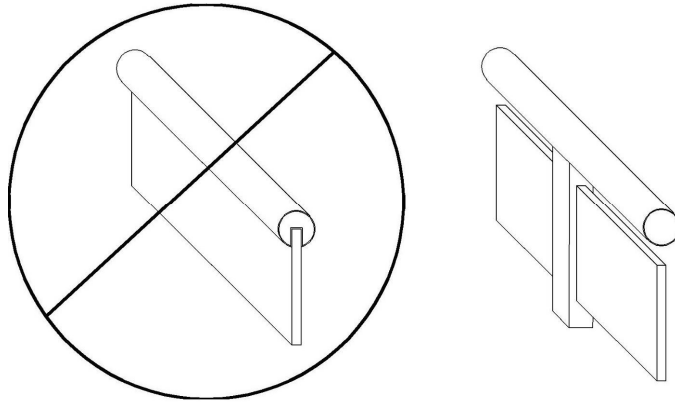
99

Handrails Non-Circular Cross Section



100

Handrails



**Obstructions limited along bottom of rail;
prohibited on top and sides**

101

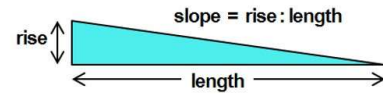
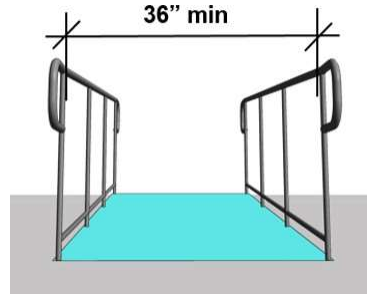
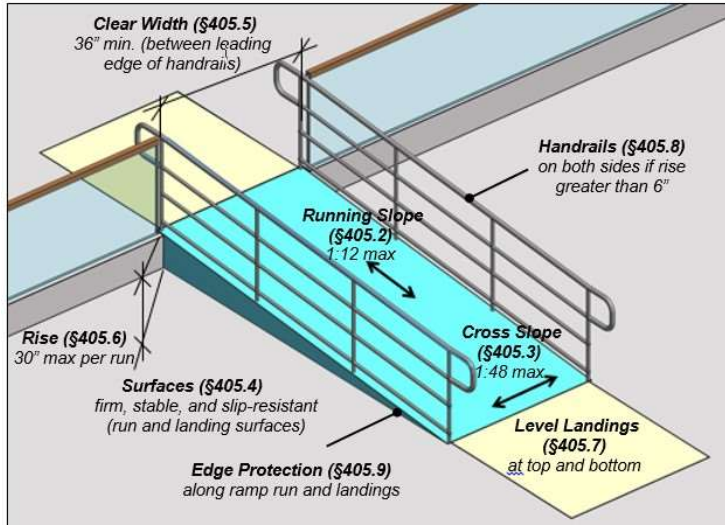
Handrails

**Handrails must comply where provided
along walkways**



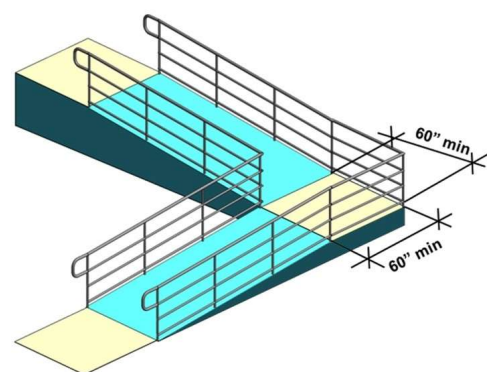
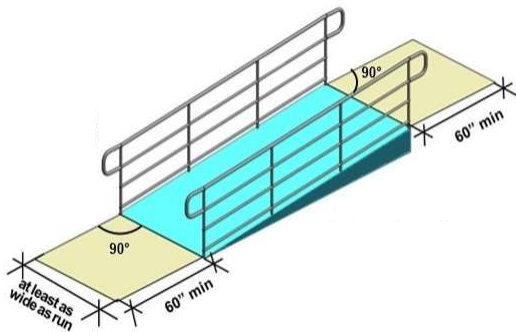
102

Ramps



103

Ramps Landings



104

Curb Ramps

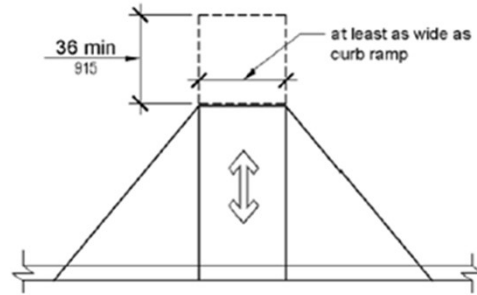


Figure 406.4
Landings at the Top of Curb Ramps

105

Curb Ramps

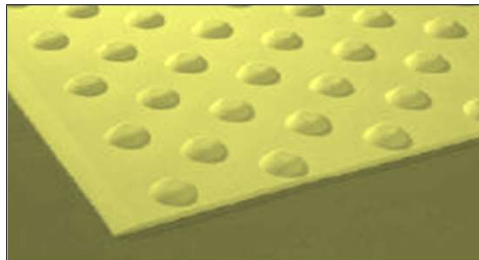


**Lack of space at top makes curb ramps
difficult to use**

106

Curb Ramps

Detectable Warnings – not required on curb ramps (except at transit facilities and FHwy projects) or hazardous vehicular areas



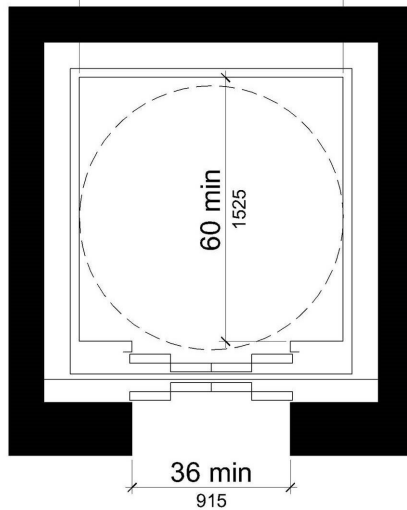
107

Elevators

- **Standard Elevators**
- **Destination-Oriented Elevators**
- **Existing Elevators (alterations)**
- **Limited Use/ Limited Application Elevators (LU/LA)**
- **Private Residence Elevators**

108

Standard Elevators



Car sizes – more alternatives

Designs providing turning space within car recognized

109

Standard Elevators

Alterations:

Where one car is altered, all cars programmed to respond to the same hall call must be altered



110

LU/LA Elevators

Allowed Only:

- Where standard elevator not required
- As alternative to platform lifts
- In multi-story housing buildings
- In residential dwelling units (private residence elevator also permitted)

111

Private Residence Elevators

- Allowed only in Residential Dwelling Units
- Required compliance with ASME A17.1



112

Platform Lifts

Allowed only at:

- **Performance Areas/ Speakers' Platforms**
- **Wheelchair Spaces in Assembly Areas**
- **Incidental Spaces**
- **Judicial Spaces (e.g., witness stands, judges' benches)**
- **Existing Site Constraints**

113

Transportation Facilities

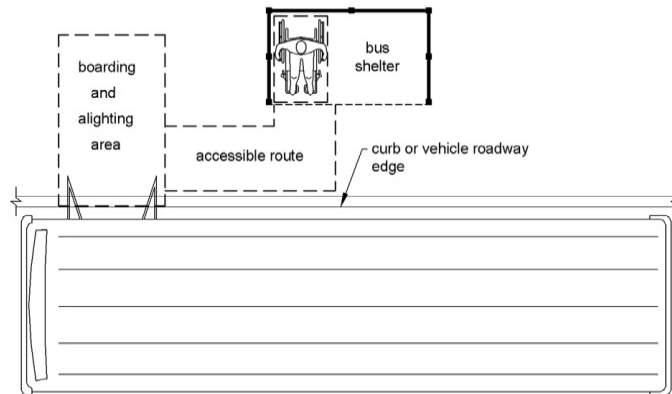
- **Bus Boarding Areas**
- **Bus Shelters**
- **Rail Stations**



114

Transportation Facilities

Bus Boarding/Alighting Areas and Shelters



115

Transportation Facilities

Rail Stations

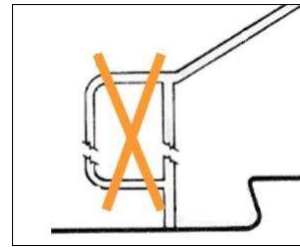
- Platforms – Vehicle coordination
- Signs (entrances, route & destinations, station names)
- Public address systems
- Escalators
- Track crossings
- Clocks



116

Stairways

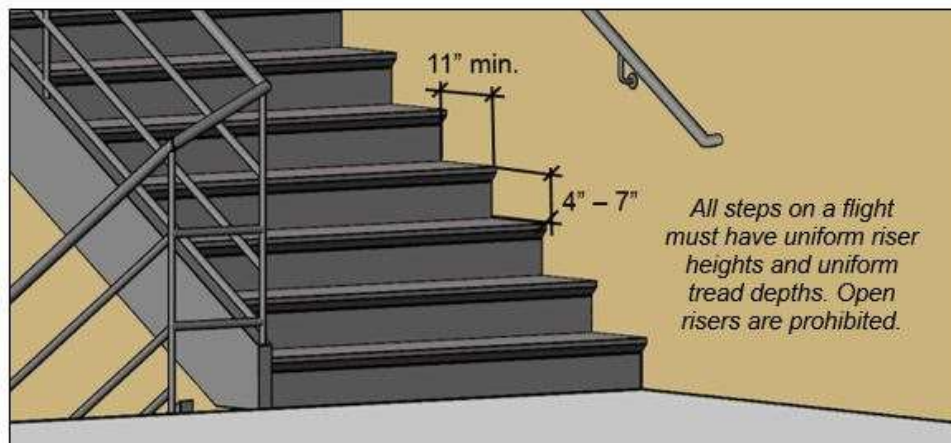
**Covered: All Stairs that are part of means of egress
(Exceptions for altered and assembly stairs)**



- **Removed: level 12" h-rail extension at bottom**
- **Riser height (4"-7")**

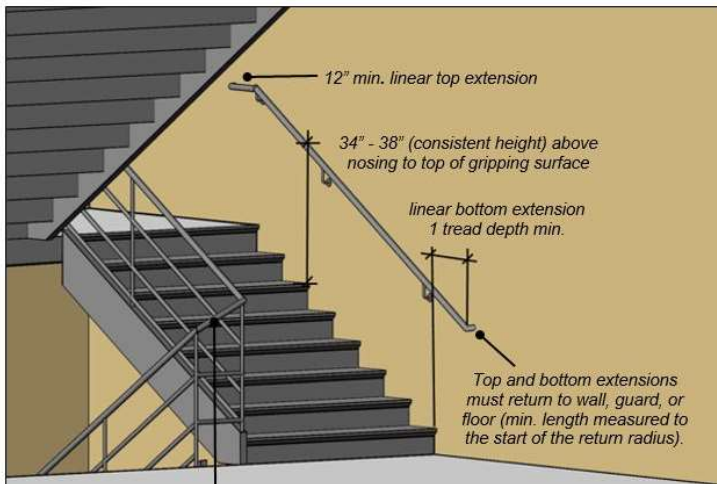
117

Stairways

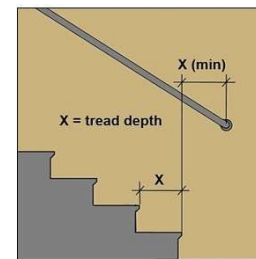
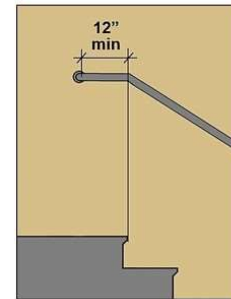


118

Stairways



Top Handrail Extension



119

Detectable Warnings



120

Detectable Warnings

- **Required on Boarding Platform Edges**
- **Curb Ramps covered by DOT standards**
- **Pedestrian At-Grade Rail Crossings**
- **Boarding and Alighting Areas**

121

Detectable Warnings

No Longer Required at:

- **Top of Stairs**
- **Curb Ramps (except at transportation facilities covered by DOT standards)**
- **Hazardous Vehicular Areas**

122

Detectable Warnings

Greater range of designs & products allowed

- Dome Diameter (range)
- Spacing (range)
- Color Contrast doesn't have to be integral

123

Parking

124

When is Accessible Parking Required?

- Employee or Visitor Parking Lots
- On-Street Parking
 - No requirements for accessible parking in the IAC
 - IDOT – Bureau of Local Roads & Street, Accessible on-street parking covered in 41-6.04

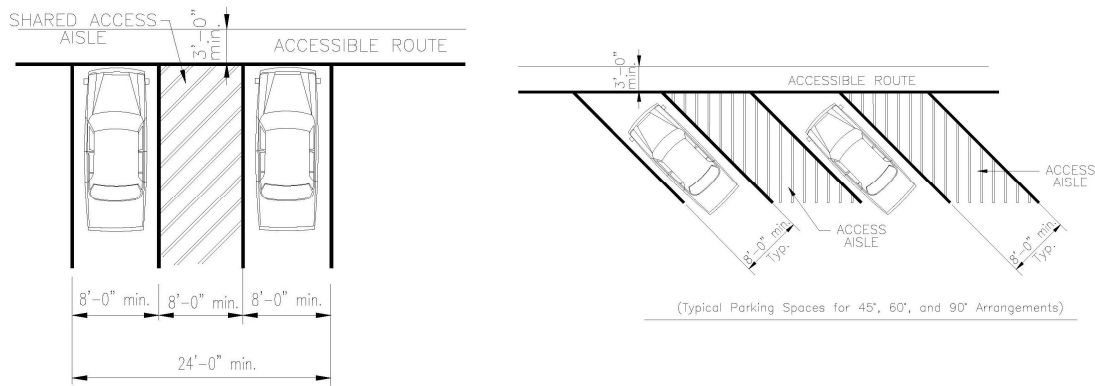
125

Where Should Accessible Spaces Be Located?

- **An Accessible space must be located on the shortest accessible route from parking to an accessible entrance**

126

Accessible Parking Spaces Striping, Size and Markings



127

Parking

Scoping applies to each Parking Facility

Total Number of Parking Spaces	Min. Number of Accessible Spaces
1 to 25	1
26 to 50	2
51 to 75	3
76 to 100	4
101 to 150	5
151 to 200	6
201 to 300	7
301 to 400	8
401 to 500	9
501 to 1000	2 percent of total
1001 and over	20, plus 1 for each 100, or fraction thereof, over 1000

128

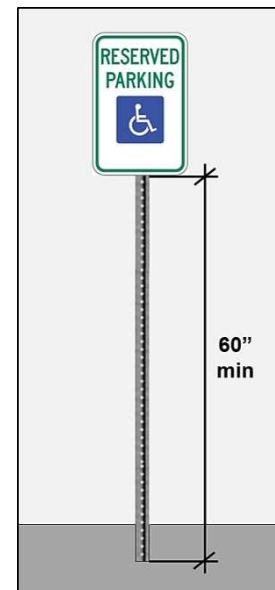
Parking

Clarifications/ Revisions:

- Exception: Parking for buses, trucks, delivery and law enforcement vehicles, impound vehicles
- Marking of access aisles
- Sign height (60" min.)

129

Parking Sign



130

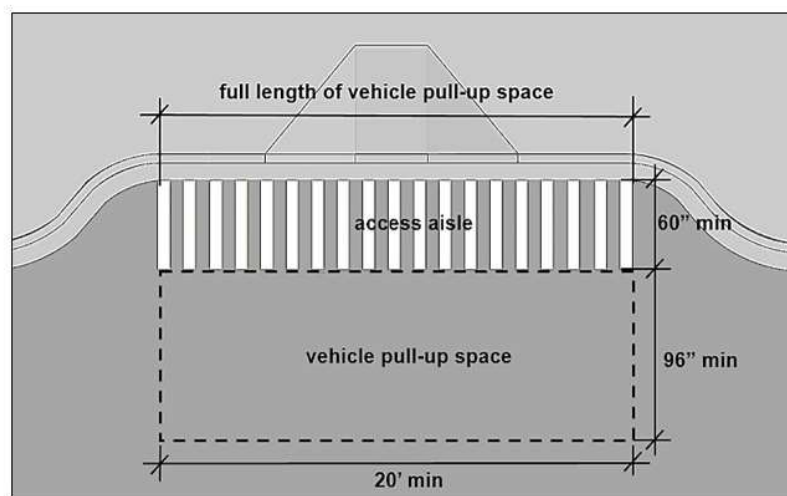
Passenger Loading Zones



At least 1 for every 100 linear ft. of loading zone space provided

131

Passenger Loading Zones



132

Toilet Rooms

133

Clustered Toilet Rooms

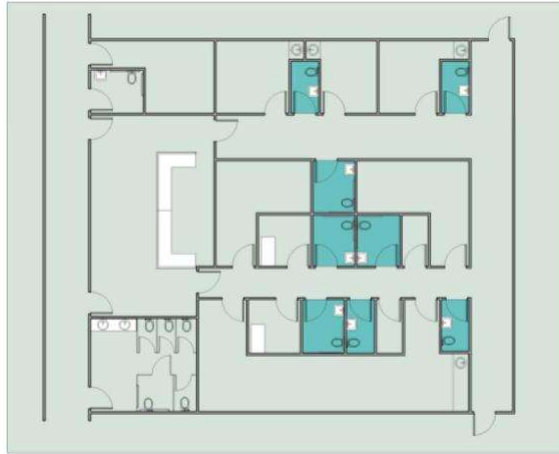
New Exception:

Access to at least 50% of Single User toilet rooms clustered at one location that serve same users (instead of 100%)

134

Clustered Toilet Rooms

Example: Medical Office Suite

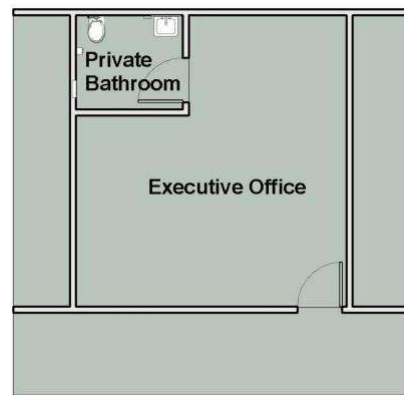


135

Private Toilet Rooms

“Adaptability” Permitted:

- **Private (not common) Use**
- **Single Occupant**
- **Accessed only through Private Office**



136

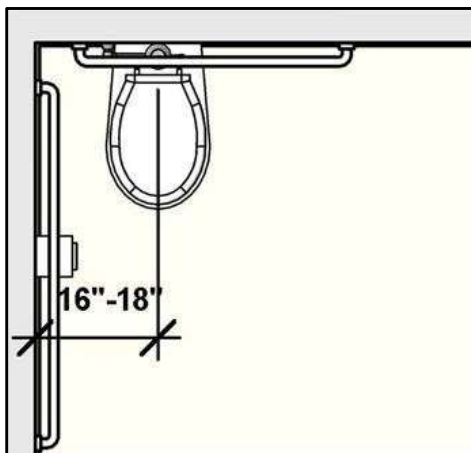
Private Toilet Rooms

Clarified that adaptability allows:

- Later provision of Grab Bars (reinforcement/ blocking)
- Alternative Toilet Seat & Lavatory Heights
- Removable Base Cabinetry at Lavs
- Door Swing into Fixture clearances (where swing can be reversed)

137

Toilet Rooms

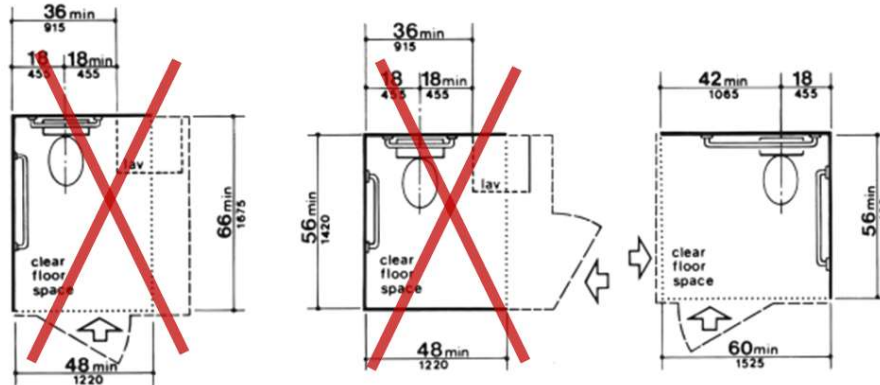


- Range for toilet centerline
- Lavatory cannot overlap Toilet Clearance (except in dwelling units)

138

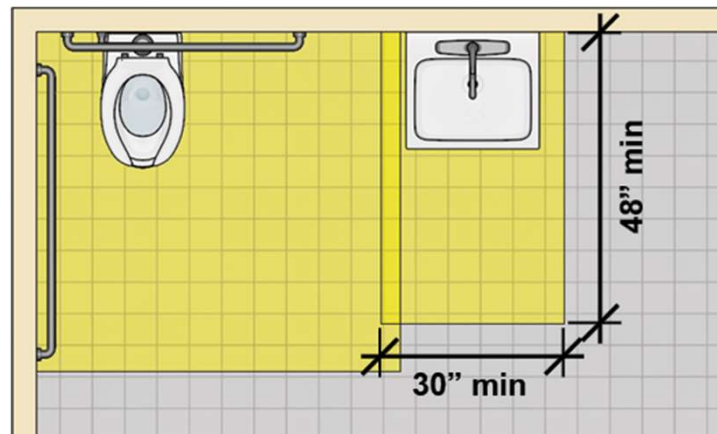
Water Closet Clearance

Original IAC (fig. 28) Permitted Overlap



139

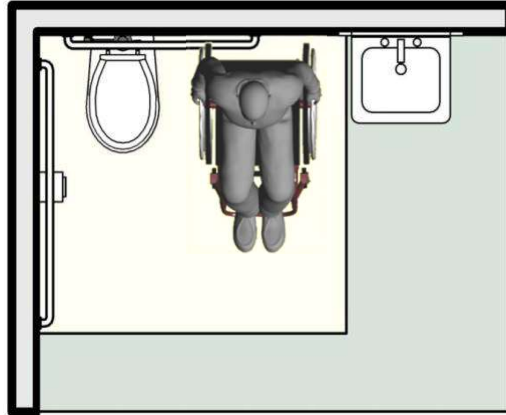
Water Closet Clearance



140

Toilet Rooms

Allows Space for Side Transfers



141

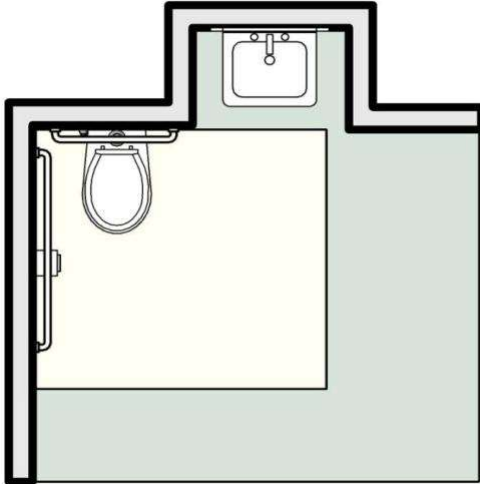
Water Closet Clearance

No Lavatory overlap permitted



142

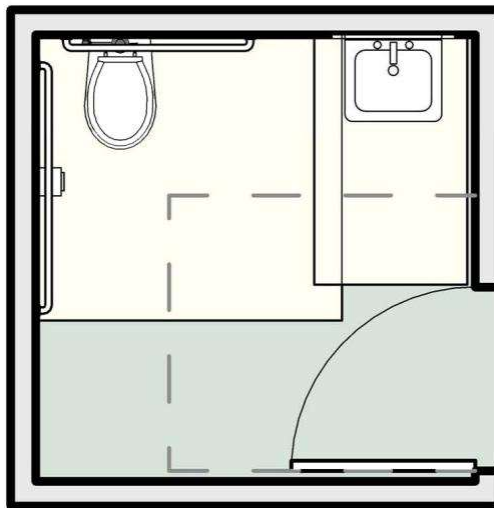
Toilet Rooms



- Fixtures can be recessed
- Shorter (24" min.) Rear Grab Bar allowed in this case

143

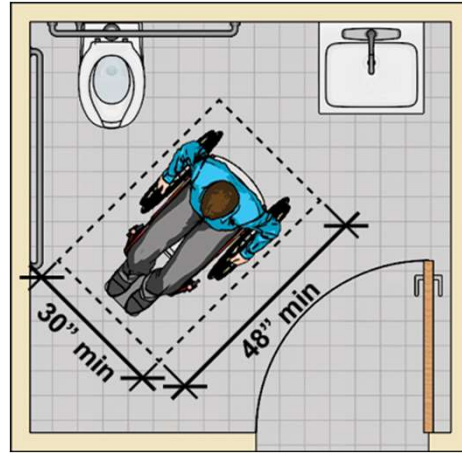
Toilet Rooms



Door maneuvering clearance; swing outside fixture clearances

144

Toilet Rooms

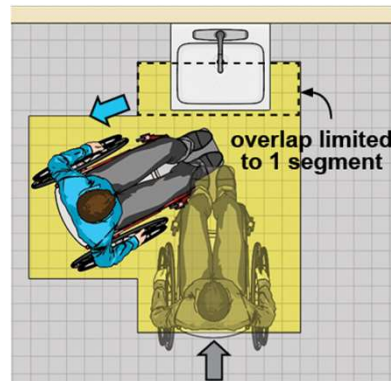
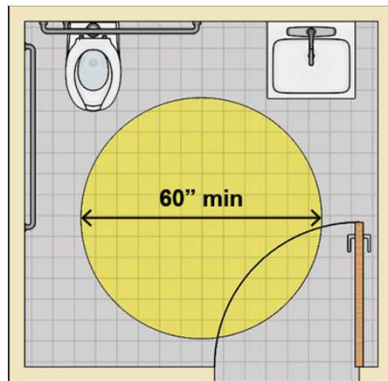


Doors can swing into fixture clearances if clear floor space (30" x 48" min.) provided outside swing

145

Turning Space

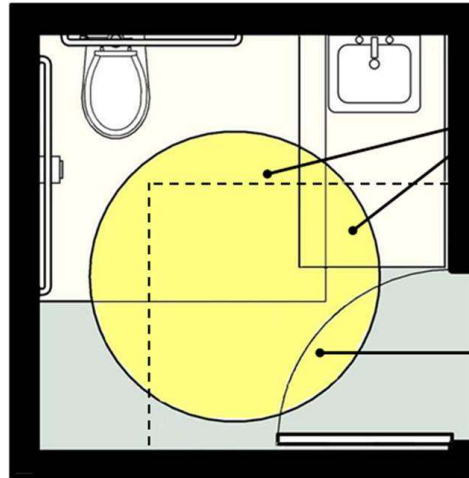
60" Diameter circle or "T" turn
(elements with knee/toe clearance can overlap)



T-Turn: overlap limited to one segment

146

Toilet Rooms



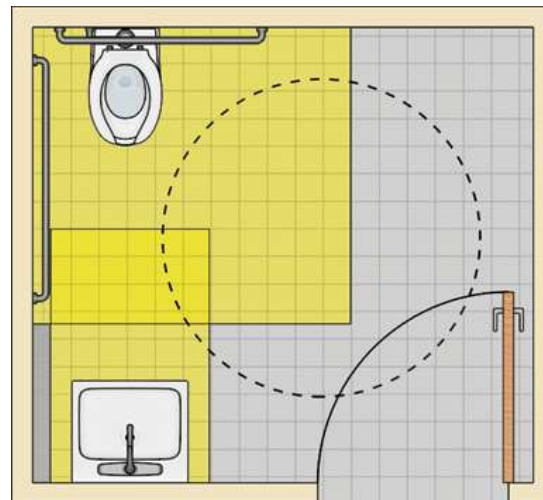
Turning space can overlap clear floor space at elements and fixtures and door maneuvering clearances.

Doors are permitted to swing into turning space.

147

Toilet Rooms

Same requirements apply for any design/ configuration

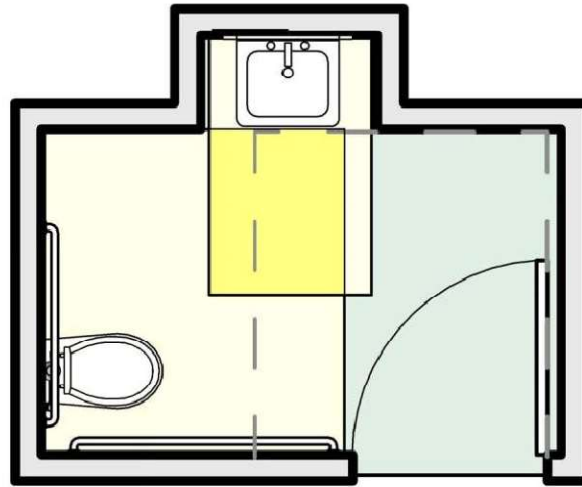


148

Toilet Rooms

... including less common designs

(turning space not shown)

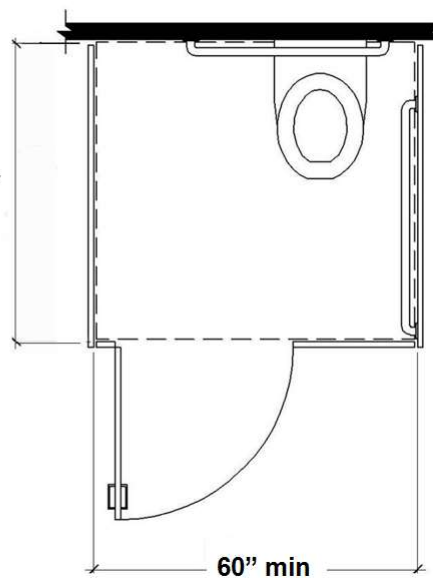


149

Toilet Stalls

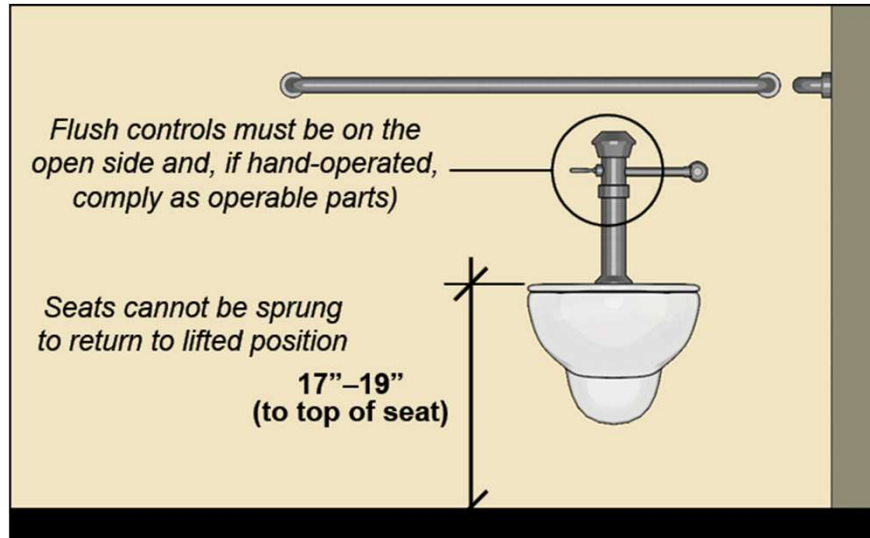
Standard Stall

56" min. (wall hung WC)
59" min. (floor-mounted or children's WC)



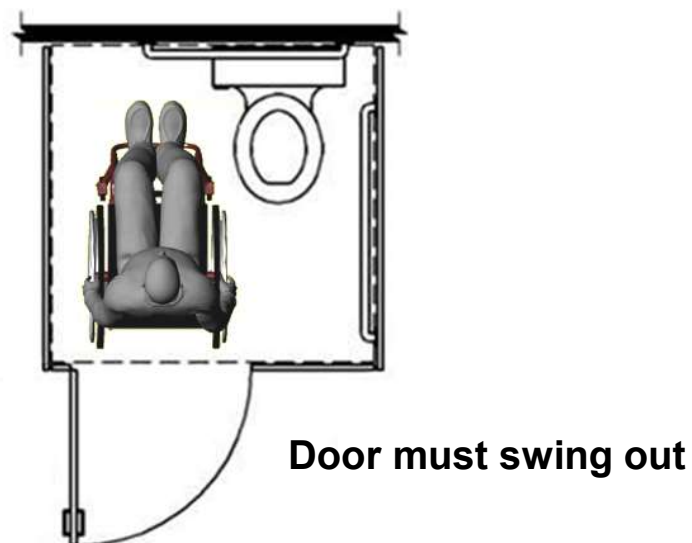
150

Toilet Stalls



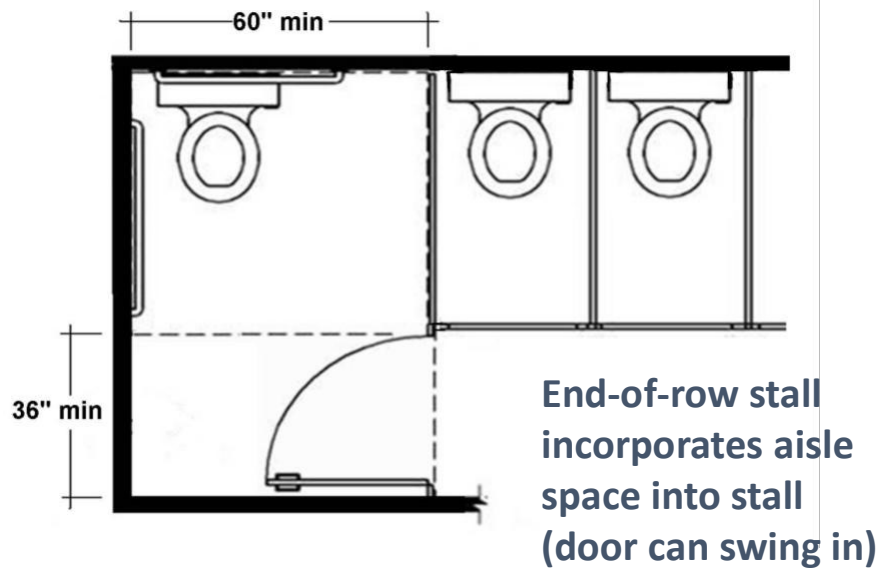
151

Toilet Stalls



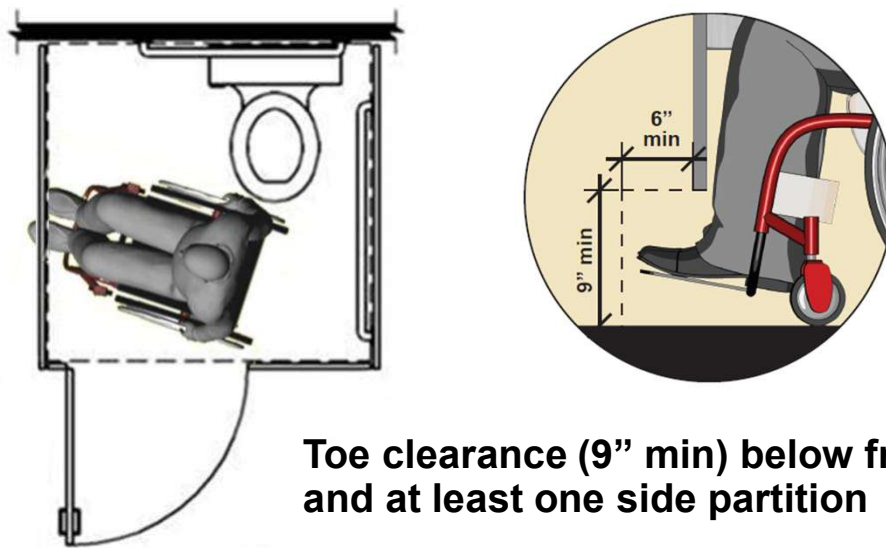
152

Toilet Stalls: End of Row



153

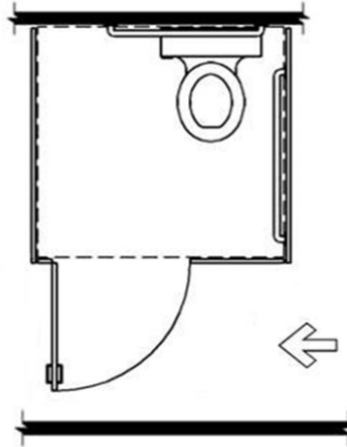
Toilet Stalls



154

Toilet Stalls

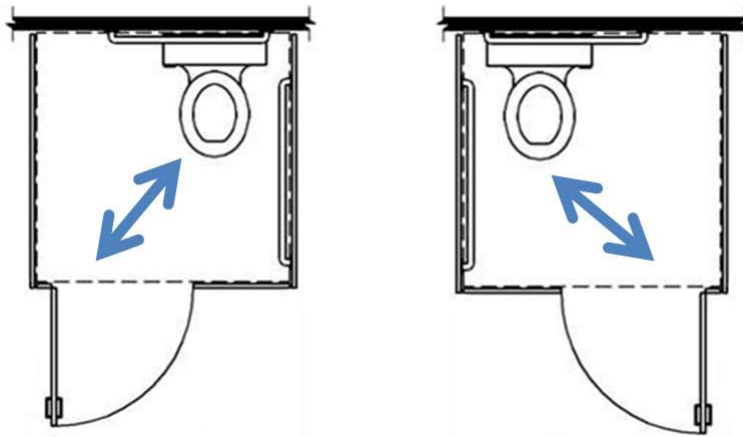
Tip: Configure stalls for a latch (instead of hinge) approach for better access



155

Toilet Stalls

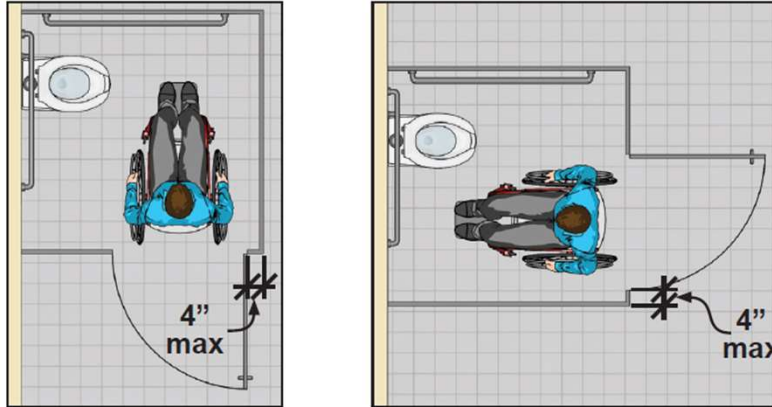
Door and Water Closet: Offset configuration



156

Toilet Stalls

Alternate side door location



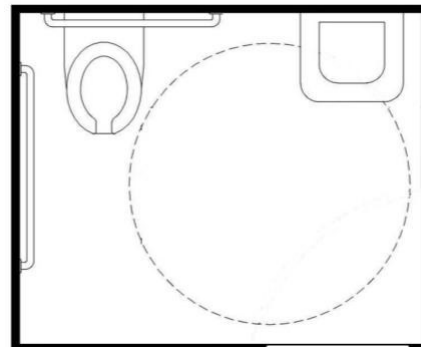
157

Toilet Stalls

Lavatories in Toilet Stalls

Stalls with more than 1 plumbing fixture treated as toilet room

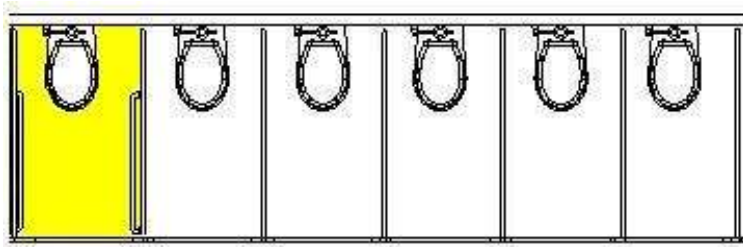
Second accessible lav required outside stall



158

Ambulatory Stall

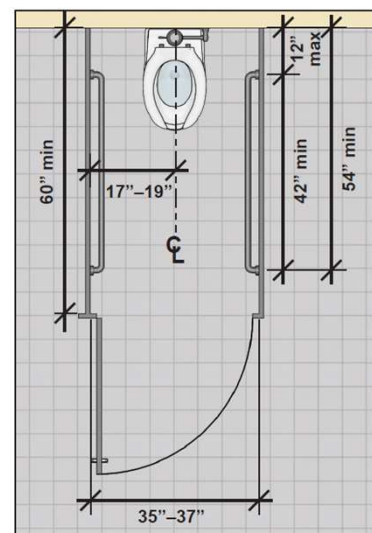
Required where 6 or more fixtures provided



159

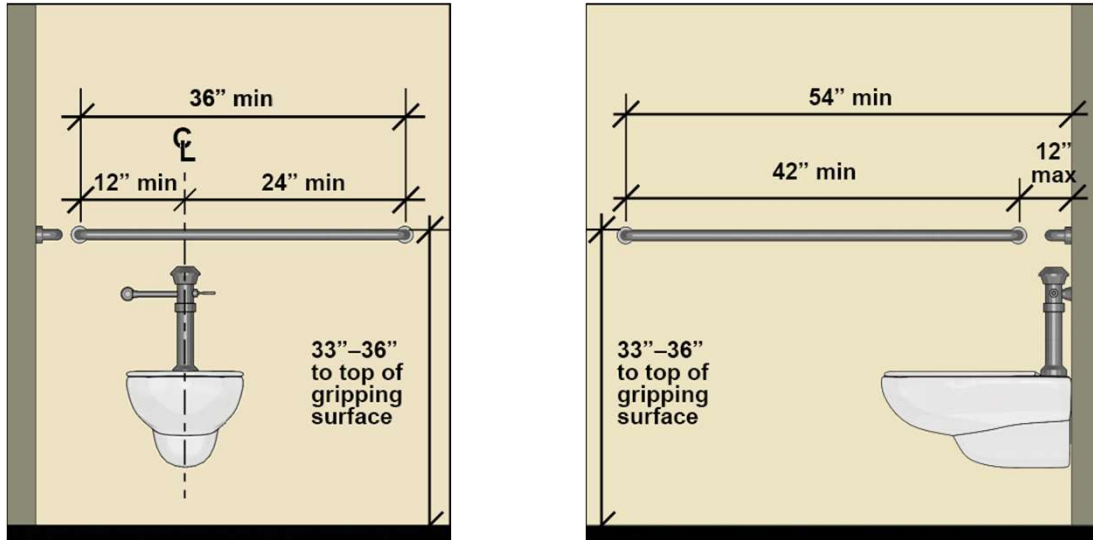
Ambulatory Stall

- Parallel Grab Bars
- Width: 35" – 37"
- Depth: 60" min.
- Doors: out-swinging, self-closing



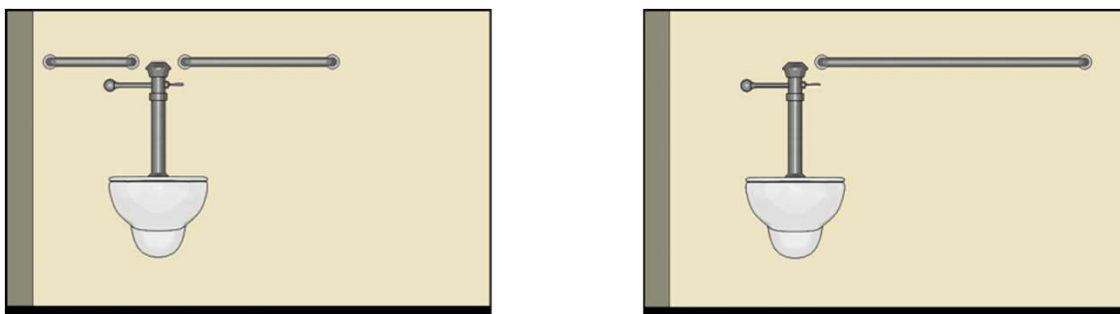
160

Grab Bars



161

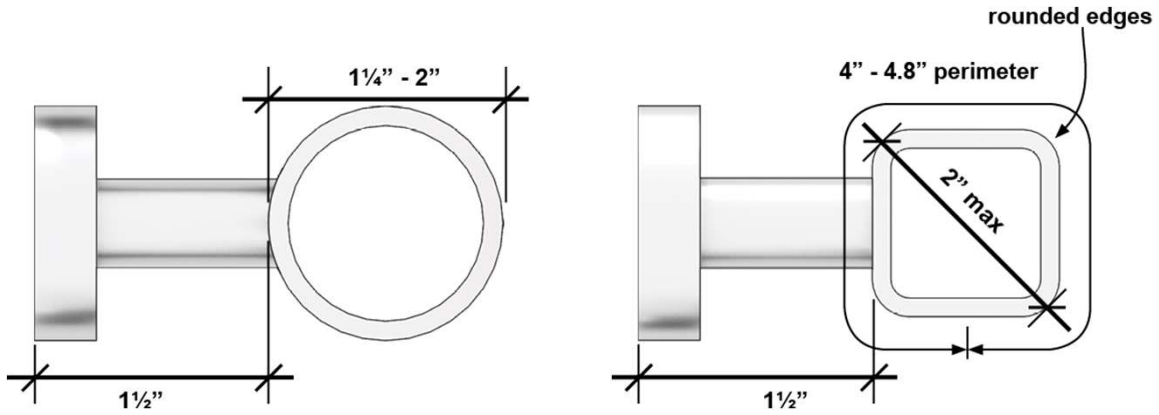
Grab Bars



162

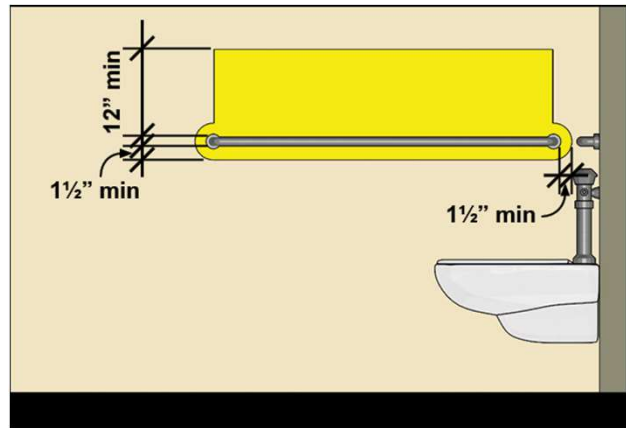
Grab Bars

- **Wider Diameter – 2" max. (instead of 1 1/2")**
- **Circular and Non-Circular Cross Sections**



163

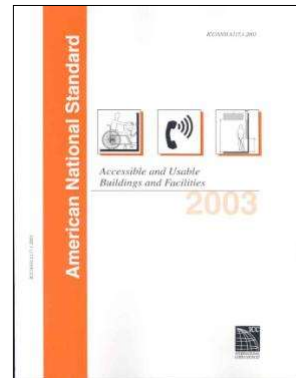
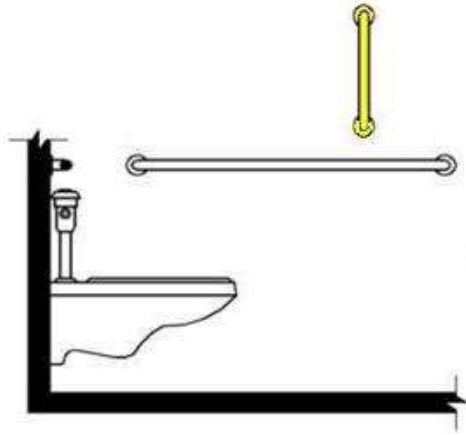
Grab Bars



164

Grab Bars

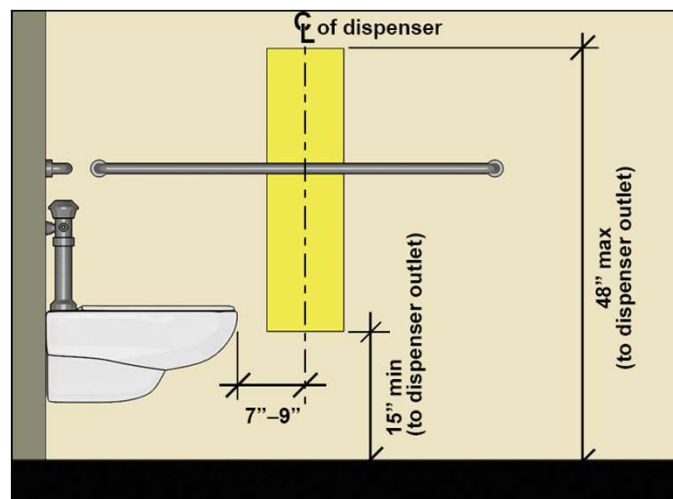
ANSI A117.1 requires 18" min. vertical grab bar
(IAC and 2010 ADA Guidelines do not)



165

Toilet Paper Dispenser

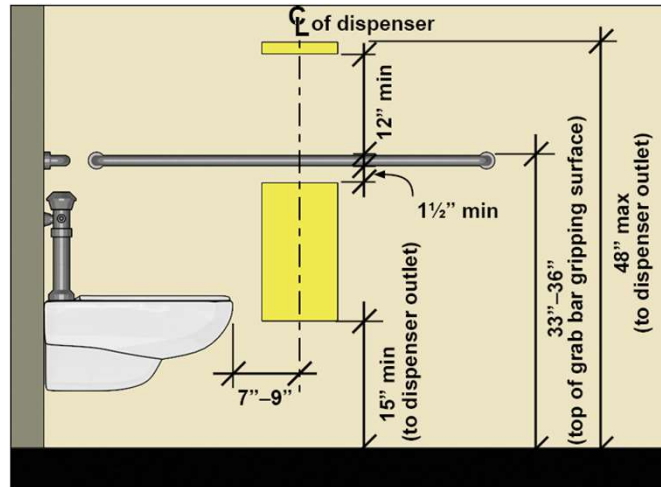
Dispenser Location



166

Toilet Paper Dispenser

Non-Recessed Dispenser Location



167

Dispensers

Common problem: large dispensers above grab bar impact usability



168

Dispensers

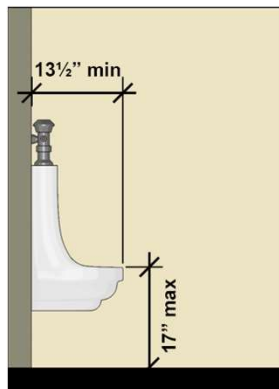
... below bar they can be out of reach range and obstruct space at WC



169

Urinals

- 17" Max. Rim Height
- Elongated Rim - 13 ½" Deep Min.



170

Lavatories and Sinks

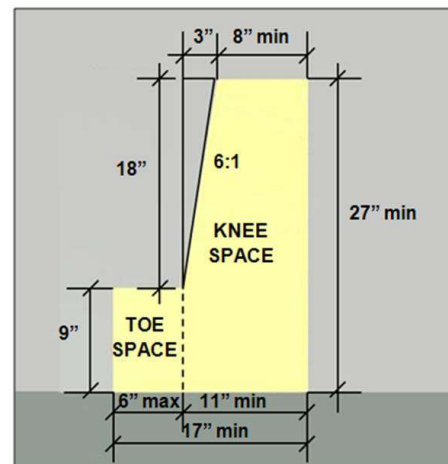
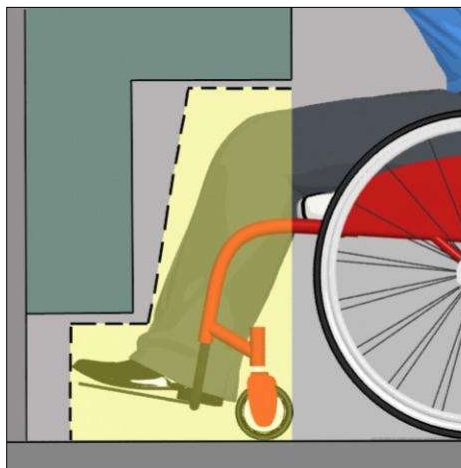
- Apron Clearance (29" min.) removed
- Parallel Approach - Kitchen Sinks in spaces without cook tops/ ranges
- Removable Cabinetry: allowed in dwelling units (if certain conditions met)



171

Lavatories and Sinks

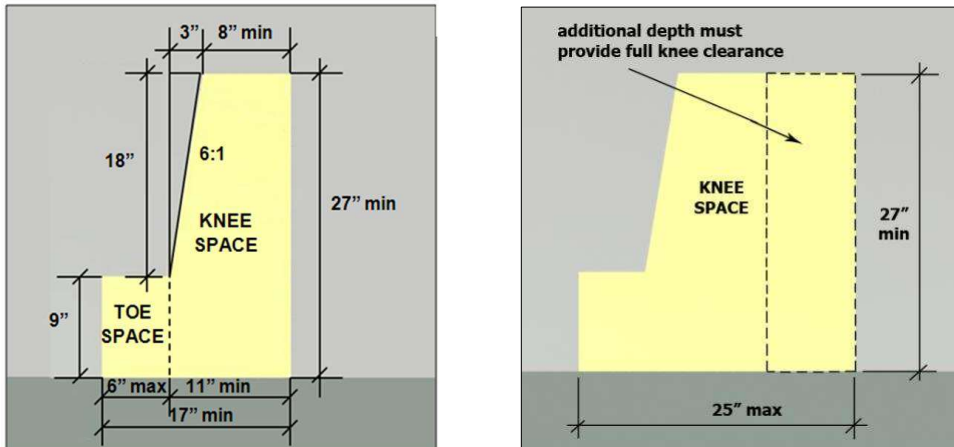
Knee & Toe Space at Lavatories



172

Lavatories and Sinks

Knee & Toe Space Total Depth: 17" - 25"



173

Lavatories

Tip: Avoid Hospital Style Lavs with deep projections



They take up more space and require a greater reach to faucet controls and dispensers

174

Sinks

Public/ Common Use: Full access to 5%

- Classrooms
- Research laboratory
(if used for instruction)
- Break room*
- Preschool classroom*

* side approach access allowed

Work Areas: Access not required (recommended)

- Commercial laboratory
- Research laboratory
(employee use only)
- Restaurant kitchen
- Janitor's sink (*exempt*)

Dwelling Units: Adaptability Allowed

- Kitchens

175

Bathing Facilities

176

Bathing Facilities

At least one Shower or Tub required

Options:

- Transfer Shower Stall
- Roll-In Shower
- Combination transfer/roll-in shower (required in some transient lodging rooms)
- Tubs

177

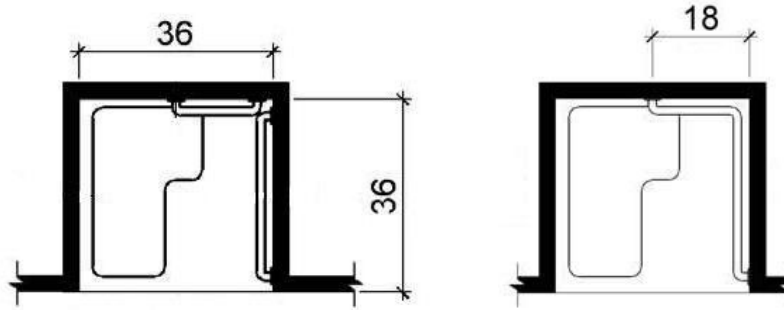
Transfer Stall



178

Transfer Stall

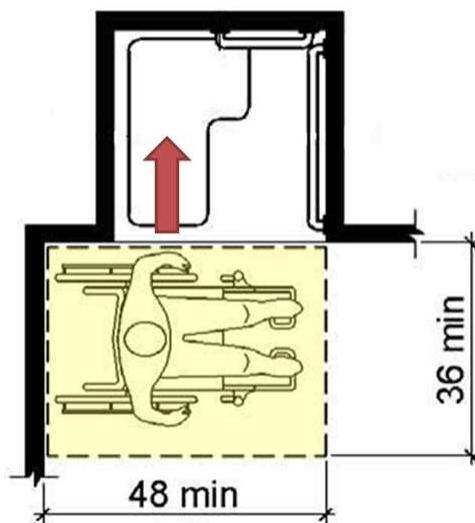
Stall dimensions: **Absolute**, not minimum
New standards: 36" measured at center point



Grab Bars can be Continuous or Split

179

Transfer Stall



- Clear Floor Space positioned for alignment with seat
- Curb: 1/2" Max.

180

Transfer Stall

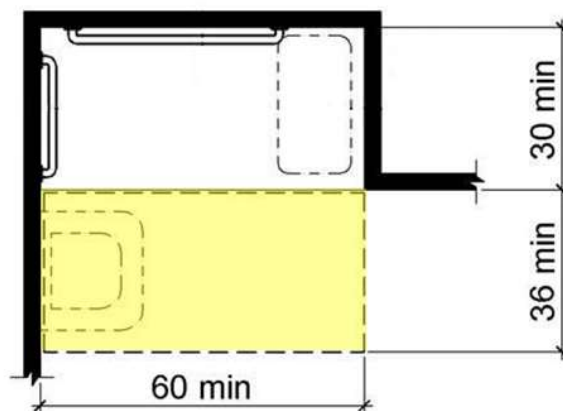


Common Error:
Insufficient Space at seat
wall

181

Roll-in Shower (No Seat)

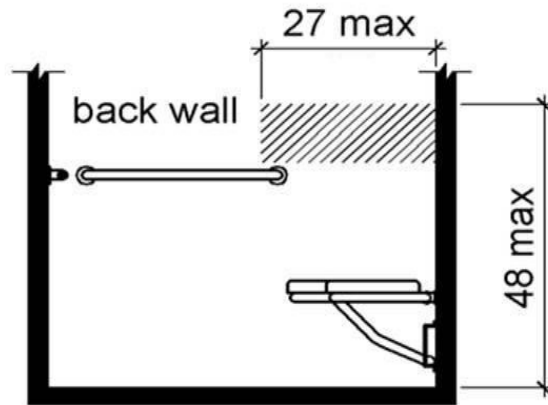
Grab Bar Ends at seat, seat must be folding



182

Roll-in Shower (With Seat)

Shower Head/Controls required on back within reach from seat



183

Roll-in Shower (With Seat)

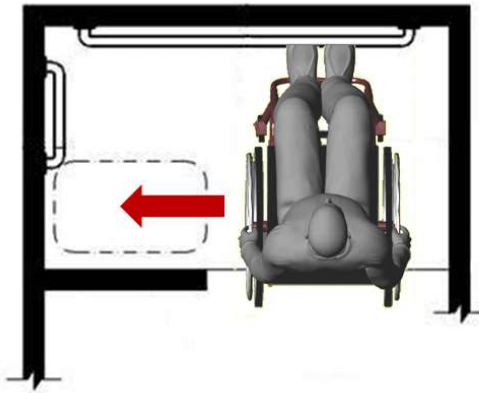
Improper location makes controls and shower spray unit unusable from seat



184

Alternate Roll-In/Transfer

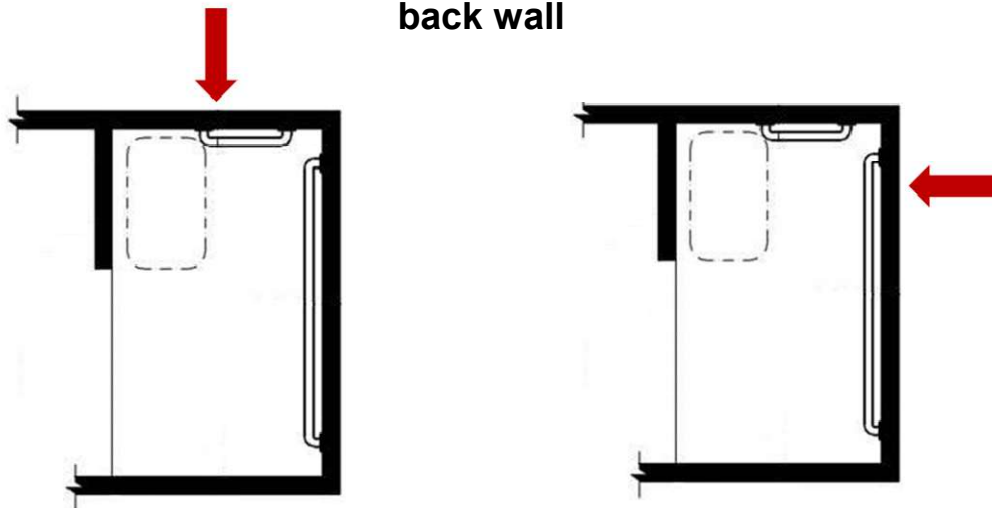
36" depth allows alignment with seat for transfer



185

Alternate Roll-In/Transfer

Location of controls and shower head on side or back wall



186

Roll-in Showers

1/2" max. beveled curb allowed (new)

Other ways to control water:

- **2% max. slope allowed**
- **consider trench drain**
- Resource from the
- Center for Universal Design
- www.design.ncsu.edu



187

Shower Spray Unit

Hand-held shower spray unit required (Exception for "unmonitored" facilities)

- **On/Off Control**
- **Water Temperature**



188

Seats

- **Dimensions**
- **Location**
- **Height (17" – 19")**
- **Securement**
- **Structural Strength**



189

Showers

Common Error:



Grab bar on seat wall

190

Showers

Common Error:

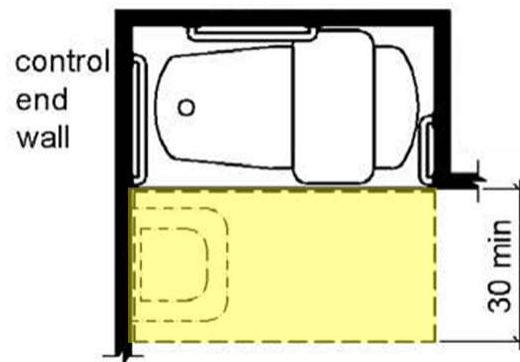


Lav obstructs transfer space at seat

191

Bath Tub (Removable Seat)

Clear floor space at tub with removable seat



192

Bath Tub (Removable Seat)



193

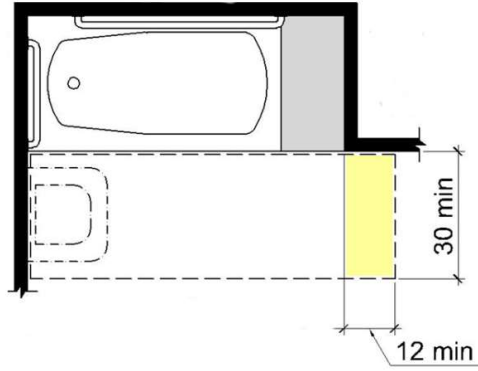
Bath Tub (Permanent Seat)



194

Bath Tub (Permanent Seat)

Clear floor space at tub with permanent seat

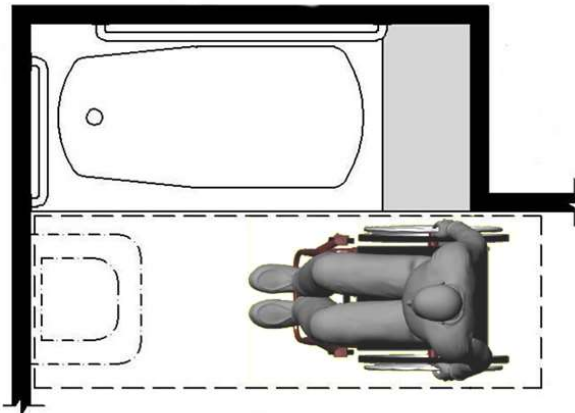


Additional space beyond seat wall

195

Bath Tub (Permanent Seat)

Space beyond seat wall allows alignment for transfer



196

Signs

197

Signs

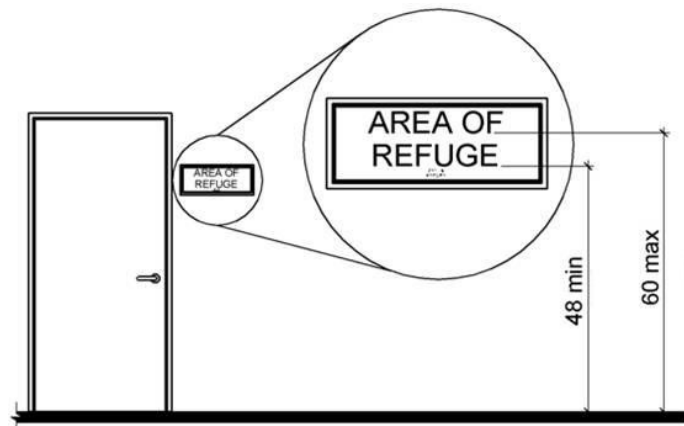
- **Tactile/ Visual – Labels for permanent rooms & spaces, exit doors**
- **Visual only – directional or informational signs**
- **Exempt: Temporary Signs, Building Menus, Directories, Addresses, Company Names and Logos**



198

Tactile Signs: Location

48" min. – 60" max. high measured to character baseline (instead of 60" centerline)



199

Signs



200

Pictograms

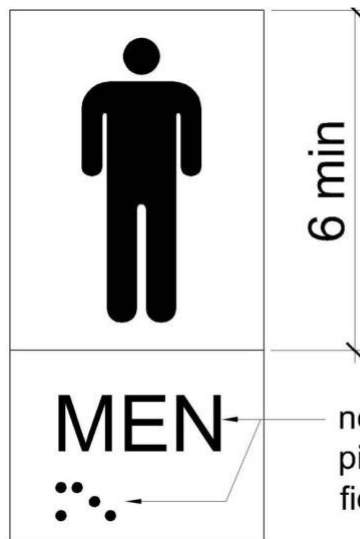
Requirement Applies:

- Where Pictogram provided
- Only to those labeling permanent space
- Not to Informational/ Directional Pictograms



201

Pictograms



Pictograms must have a field height of 6 inches minimum

Characters and Braille shall not be located in the pictogram field.

not in pictogram field

202

Pictograms

Examples of Informational/ Directional Pictograms
(finish & contrast specs only)



203

Tactile Signs

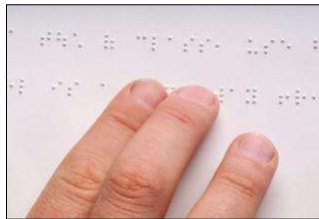
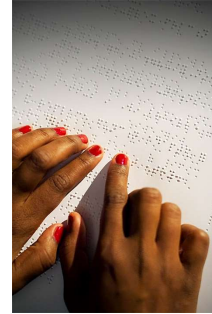
Scoping (Interior & Exterior):

- Restroom Labels (at entry)
- Room Numbers/Names
- Floor Levels
- Doors at Exit Passageways, Exit Discharge, and Exit Stairways
- Areas of Rescue Assistance

204

Tactile Signs

- Raised Characters
- Grade 2 Braille
- Visual access (Finish and Contrast)
- Pictograms (Designating Room/Space)

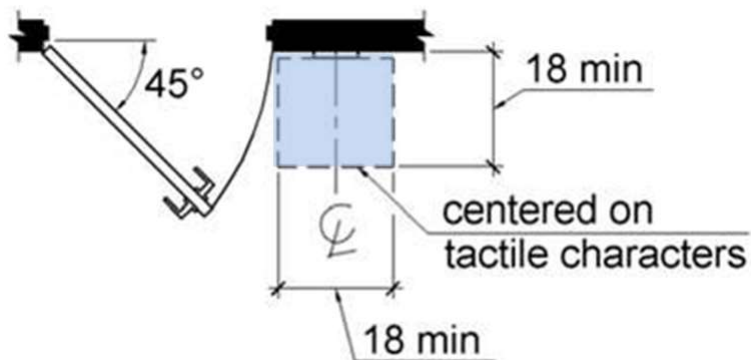


205

Tactile Signs: Location

Location: Latch Side of Doors

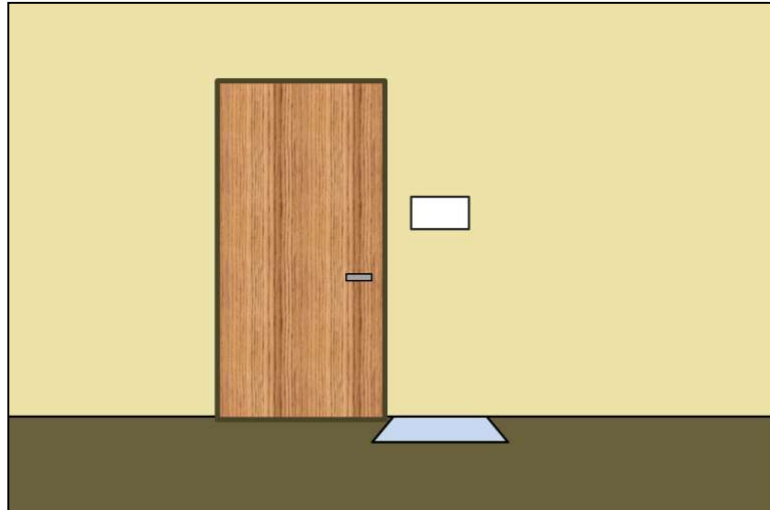
More detail in New Code (18" x 18" clear floor space at sign)



206

Tactile Signs: Location

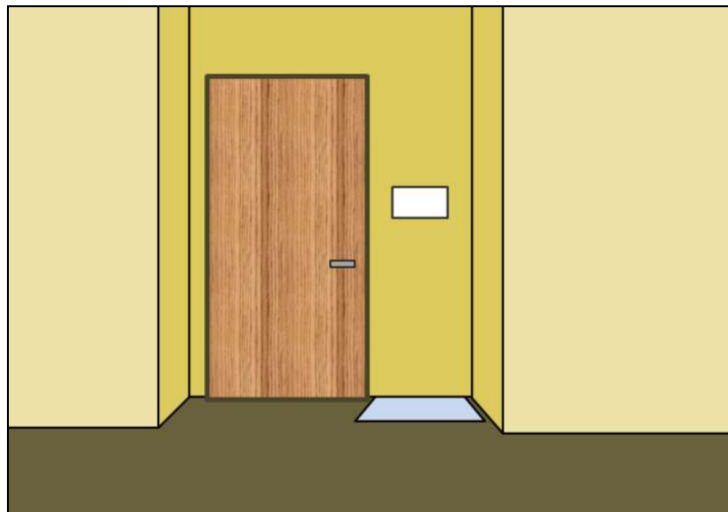
Latch side placement



207

Tactile Signs: Location

Latch side placement at recessed door



208

Tactile Signs: Location

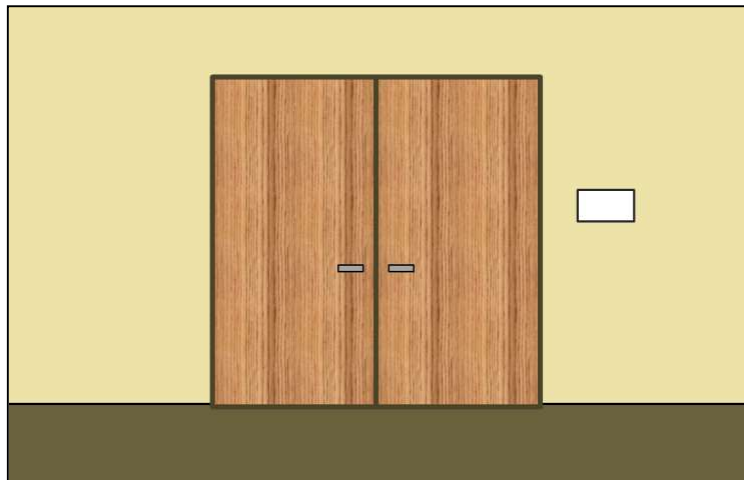
No space on latch side: on nearest adjacent wall



209

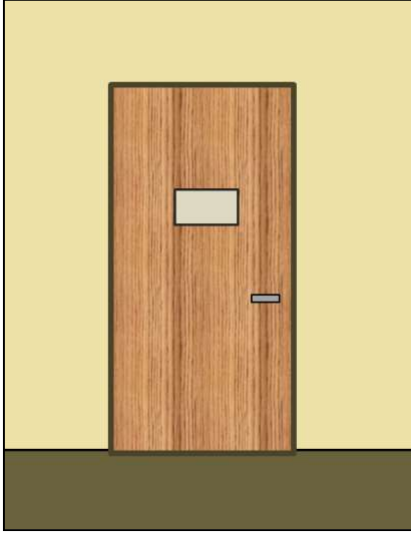
Tactile Signs: Location

At double doors: right side (2 active) or on inactive leaf



210

Tactile Signs: Location



Alternative:

Placement on the push side
of doors with closers and
without hold-open devices

211

Visual Character Style

New Code specify “Conventional Form”

Prohibited:

Italic **Oblique** *script*

highly decorative

or other *unusual forms*

212

Character Style

Examples of Compliant Styles

Arial
Gill Sans
Helvetica
Palatino
Times

213

Character Height



<u>Height Above Floor</u>	<u>Min. Character Height</u>
40" – 70"	5/8" (+ 1/8"/ foot of horiz. distance above 72")
70" – 120"	2" (+ 1/8"/ foot of horiz. distance above 180")
Above 120"	3" (+ 1/8"/ foot of horiz. distance above 21')

(Minimum Sign Height: 40")

214

Contrast



Light-on Dark or Dark-on-Light
Contrast Values not specified (the higher the better)

215

Contrast

Examples of Poor Contrast

216

Assembly Areas

217

Assembly Areas

- **Require horizontal dispersion**
- **Prohibit placement on temporary platforms or other moveable structures except under certain conditions**
- **Address line-of-sight in stadium-style theaters**



218

Assembly Areas

Wheelchair Spaces – amount required based on seating capacity



219

Assembly Areas

Wheelchair Spaces

Total Seating	Minimum Wheelchair Spaces
4 to 25	1
26 to 50	2
51 to 150	4
151 to 300	5
301 to 500	6
501 to 5000	6 + 1 for each 150 over 501
5001 and over	36 + 1 for each 200 over 5000

220

Assembly Areas

Box and Club Seating

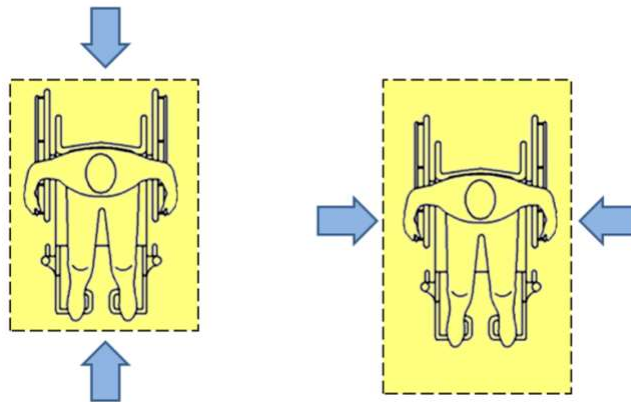
- **Luxury or Club Box/Suite:** apply table to each
- **Other boxes (e.g., opera):** apply table to total box seating; disperse in 20% min.



221

Assembly Areas

Wheelchair Space



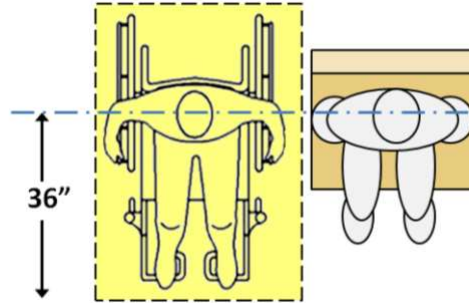
Front or Rear Entry
36" x 48" min.

Side Entry
36" x 60" min.

222

Assembly Areas

Each wheelchair space must have companion seat (can be removable)



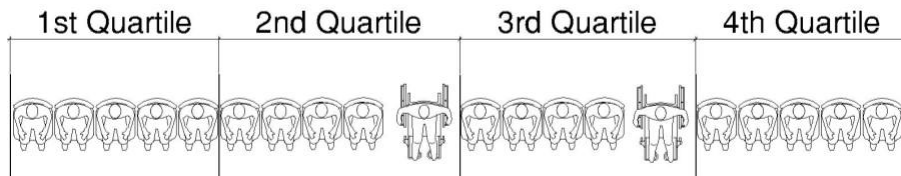
Wheelchair spaces must be located to provide shoulder-to-shoulder alignment with adjacent seating

223

Assembly Areas

Horizontal Dispersion

Exception (300 seats max.) if:
spaces & companion seats located in
the 2nd or 3rd quartile of row

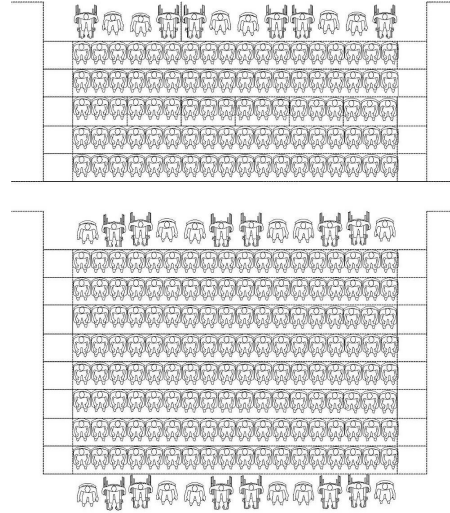


224

Assembly Areas

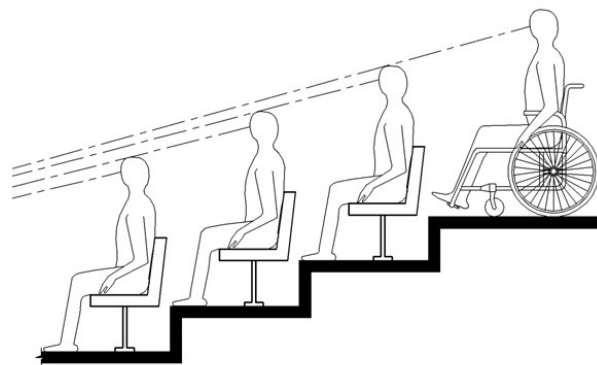
Vertical Dispersion

**Exception (300 seats max.) if:
viewing angles = or better than the average viewing angles in the assembly area**



225

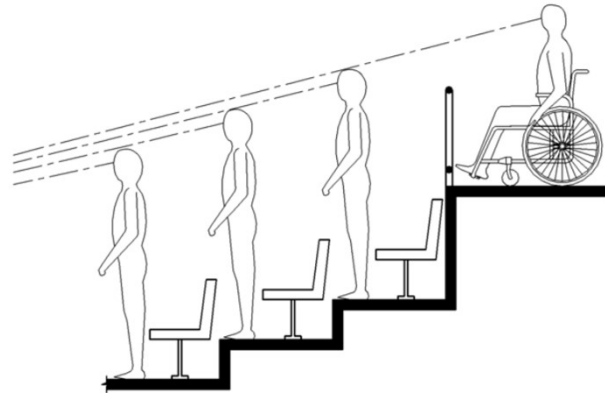
Line of Sight



Wheelchair spaces must provide comparable lines of sight

226

Line of Sight



Lines of sight over standing spectators

227

Assembly Areas

Dispersion to all levels that include seating served by an accessible route in stadiums, arenas, and grandstands.



228

Assembly Areas

Also Addressed:

- **Team/Player Seating: at least 1 space**
- **Designated Aisle Seats - 5% of aisle seats**
- **Lawn Seating - Accessible Route**

229

Lodging Facilities and Guest Rooms

230

Guest Rooms with Mobility Features

Total Number of Guest Rooms Provided	Minimum Number of Required Rooms Without Roll-in Showers	Minimum Number of Required Rooms With Roll-in Showers	Total Number of Required Rooms
1 to 25	1	0	1
26 to 50	2	0	2
51 to 75	3	1	4
76 to 100	4	1	5
101 to 150	5	2	7
151 to 200	6	2	8
201 to 300	7	3	10
301 to 400	8	4	12
401 to 500	9	4	13
501 to 1000	2 percent of total	1 percent of total	3 percent of total
1001 and over	20, plus 1 for each 100, or fraction thereof, over 1000	10, plus 1 for each 100, or fraction thereof, over 1000	30, plus 2 for each 100, or fraction thereof, over 1000

Table 224.2 Guest Rooms with Mobility Features

231

Transient Lodging

- **Communication Accessible Rooms – separate scoping table**
- **Communication Access in mobility accessible rooms - at least 1, no more than 10%**
- **All rooms: 32” min. clear width for doors**



232

Transient Lodging

Guest Rooms with Communication Features

Total Number of Guest Rooms Provided	Minimum Number of Required Guest Rooms With Communication Features
2 to 25	2
26 to 50	4
51 to 75	7
76 to 100	9
101 to 150	12
151 to 200	14
201 to 300	17
301 to 400	20
401 to 500	22
501 to 1000	5 percent of total
1001 and over	50, plus 3 for each 100 over 1000

Table 224.4 Guest Rooms with Communication Features

233

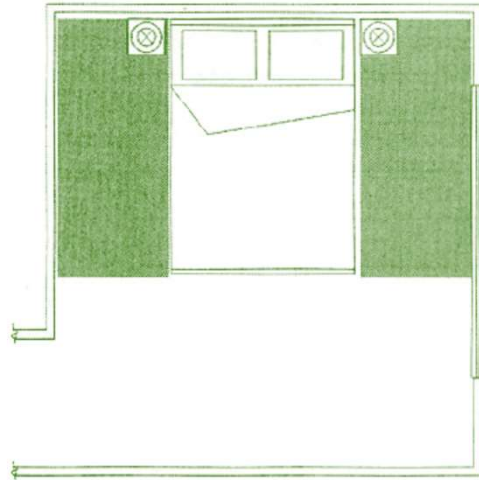
Transient Lodging

- **Bedside Clearances**
- **Accessible Routes**
- **Doors**
- **Storage**
- **Controls**
- **Bathrooms**
- **Kitchens/ Kitchenettes**



234

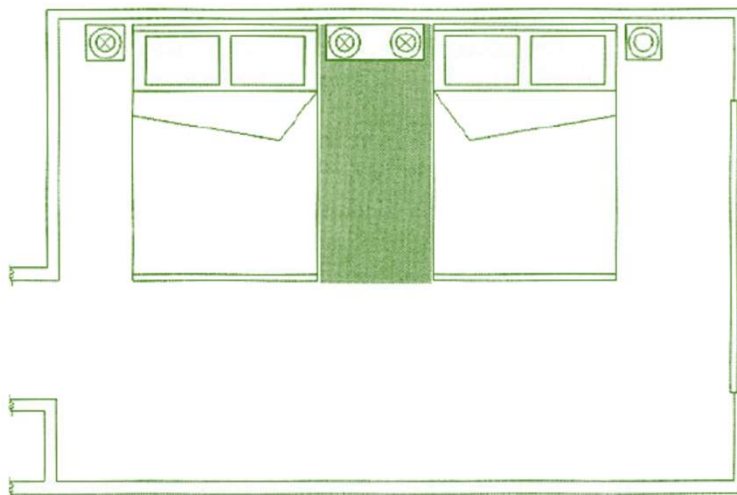
Transient Lodging



Bedside clearances

235

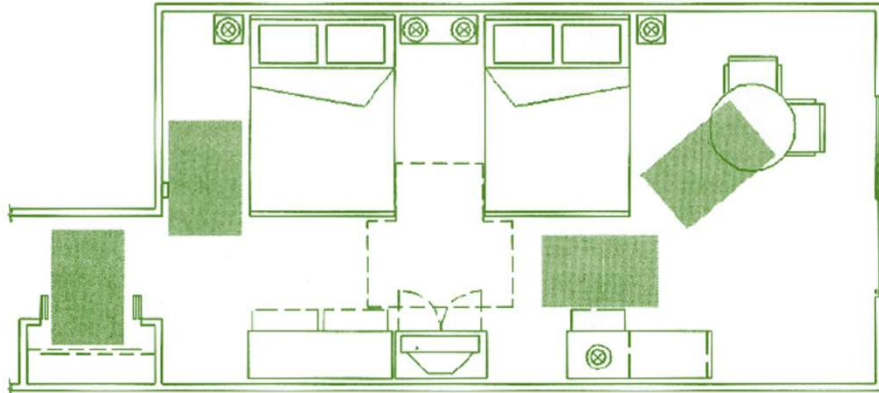
Transient Lodging



Bedside Clearances

236

Transient Lodging



Clear Floor Space

237

Multi-Story Housing

238

Multi-Story Housing

Adaptable Dwelling Unit

- **20 % Adaptable**
- **Converted with Minimum of Structural Changes**
- **Cost Borne by Owner**

239

Multi-Story Housing

- **Common Use and Public Use Spaces**
- **Site Improvements**
- **Emergency Warning Systems**

240

Multi-Story Housing

Adaptable Dwelling Unit

- Accessible Route
- Door Maneuvering Clearances
- To Private Patios, Terraces, Balconies, Carports & Garages
- Bathrooms
- Kitchen & Laundry
- Storage
- Two Story Dwelling Unit Exemption

241

Accessibility Contacts

Great Lakes ADA Center

Provides information, materials, technical assistance and training.

University of Illinois at Chicago

Inst. on Disability & Human Devel. (MC 728)

1640 West Roosevelt Road, Room 405

Chicago, IL 60608

312-413-1407 voice/tty

312-413-1856 fax

800-949-4232 toll free

adata@adagreatlakes.org

www.adagreatlakes.org

242

Illinois Department of Transportation

Addresses public right of way accessibility issues and complaints.

ADA Policy Engineer

Bureau of Design & Environment

Attn: ADA

2300 S. Dirksen Parkway

Springfield, IL 62764

217-785-2148 voice

dot.ada.complaint@illinois.gov

www.idot.illinois.gov/about-idot/civil-rights/ADA-and-Accessibility

243

Office of the Attorney General

Disability Rights Bureau

100 W. Randolph St., Suite 11-601

Chicago, IL 60601

312-814-5684 voice

312855-2512 fax

www.illinoisattorneygeneral.gov

For disability complaints north of I-80

244

Office of the Attorney General

Disability Rights Bureau

500 S. 2nd St.

Springfield, IL 62706

217-524-2660 voice

217-782-1096 fax

www.illinoisattorneygeneral.gov***For disability complaints south of I-80***

245

Illinois Department of Public Health*General information about the Illinois Plumbing Code.*

Environmental Health Division

Illinois Plumbing Program

525 W. Jefferson St.; 3rd Floor

Springfield, IL 62761

217-524-0791 voice

217-524-5868 fax

DPH.Plumbing@illinois.gov

246

Capital Development Board

Responsible for the Illinois Accessibility Code and its interpretation.

Felicia Burton

Accessibility Specialist

Capital Development Board

Wm. G. Stratton Building, FL 3

401 S. Spring St.

Springfield, IL 62706-4050

217-782-8530 voice

217-524-4208 fax

217-524-4449 tty

felicia.burton@illinois.gov