

[Home](#) [News](#) [Events](#) [Directory](#) [Pics & Clips](#) [Commute](#) [Real Estate](#)

Update: We've surpassed 700 Facebook likes! Onward to 800! »

Government

Hinsdale Parking Study Underway, Survey Out

An independent study by Chicago Metropolitan Agency for Planning (CMAP) is evaluating Hinsdale's parking system and how its existing stock of spaces can be most efficiently managed.

By [Joe O'Donnell](#) | [Email the author](#) | February 25, 2013

[Tweet](#) [Email](#) [Print](#) [Comment](#)

A study of downtown Hinsdale's parking system is underway, and [Village of Hinsdale](#) staff want residents to weigh in.

The independent study of current parking practices in the village is being carried out by [Chicago Metropolitan Agency for Planning](#) (CMAP), which awarded Hinsdale technical assistance to conduct the study last October. Hinsdale director of community development Tim Scott said in November the study is expected to take 10-11 months to complete.

The study is not for the purposes of recommending any new parking spaces or structures.

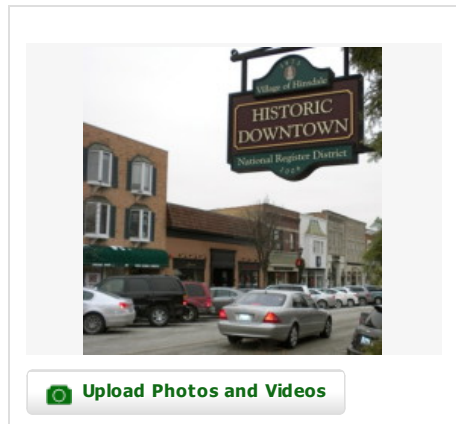
"The idea is how do we best manage our existing supply," Scott said, noting the number of parking zones and time restrictions that go with them as things that are fair game.

Having CMAP carry out the study, Scott said, means a fresh set of eyes is taking an unbiased look. Village staff, he said, is open-minded to whatever the study recommends.

"We're not driving something we think is the right way to go," Scott said.

The village has set up an online survey that asks residents to provide priorities when it comes to parking downtown and recommendations on improvement strategies.

[Fill out the survey here.](#)



[Upload Photos and Videos](#)