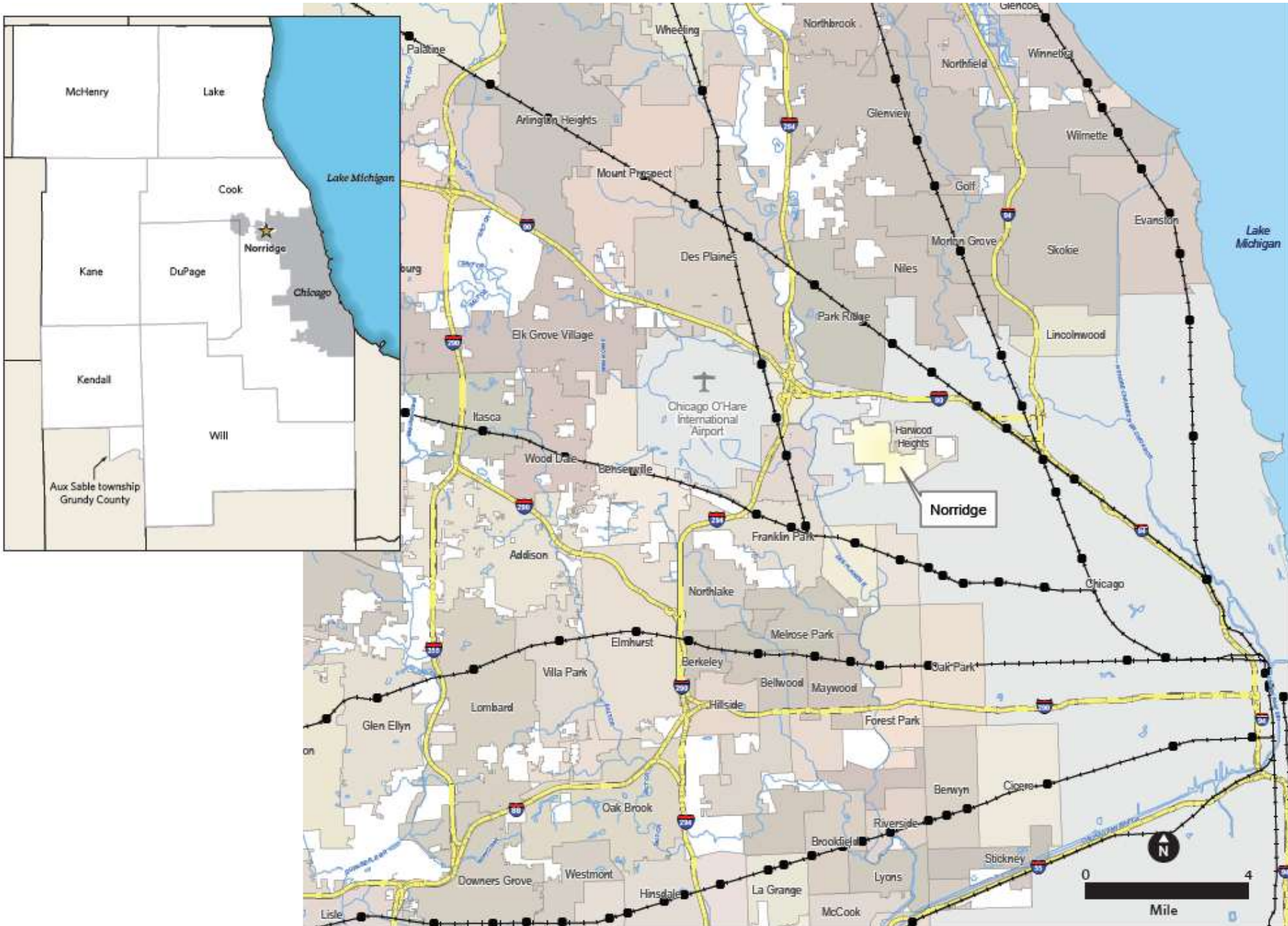


Village of Norridge Comprehensive Plan Update

CMAP Human and Community Development Committee

April 9, 2012





Norridge



DEMOGRAPHICS

Age of population – one of the oldest communities in the region, by % of elderly residents:

	Norridge	Niles	La Grange Park	Lincolnshire	Region
Population	14,572	29,803	13,579	7,275	8,431,386
% over 65	24.8%	25.7%	21.1%	33.0%	8.1%
% over 80	10.8%	10.9%	11.4%	15.9%	3.2%

Stable community – median time in current home is 17 years, compared to regional average of 8 years

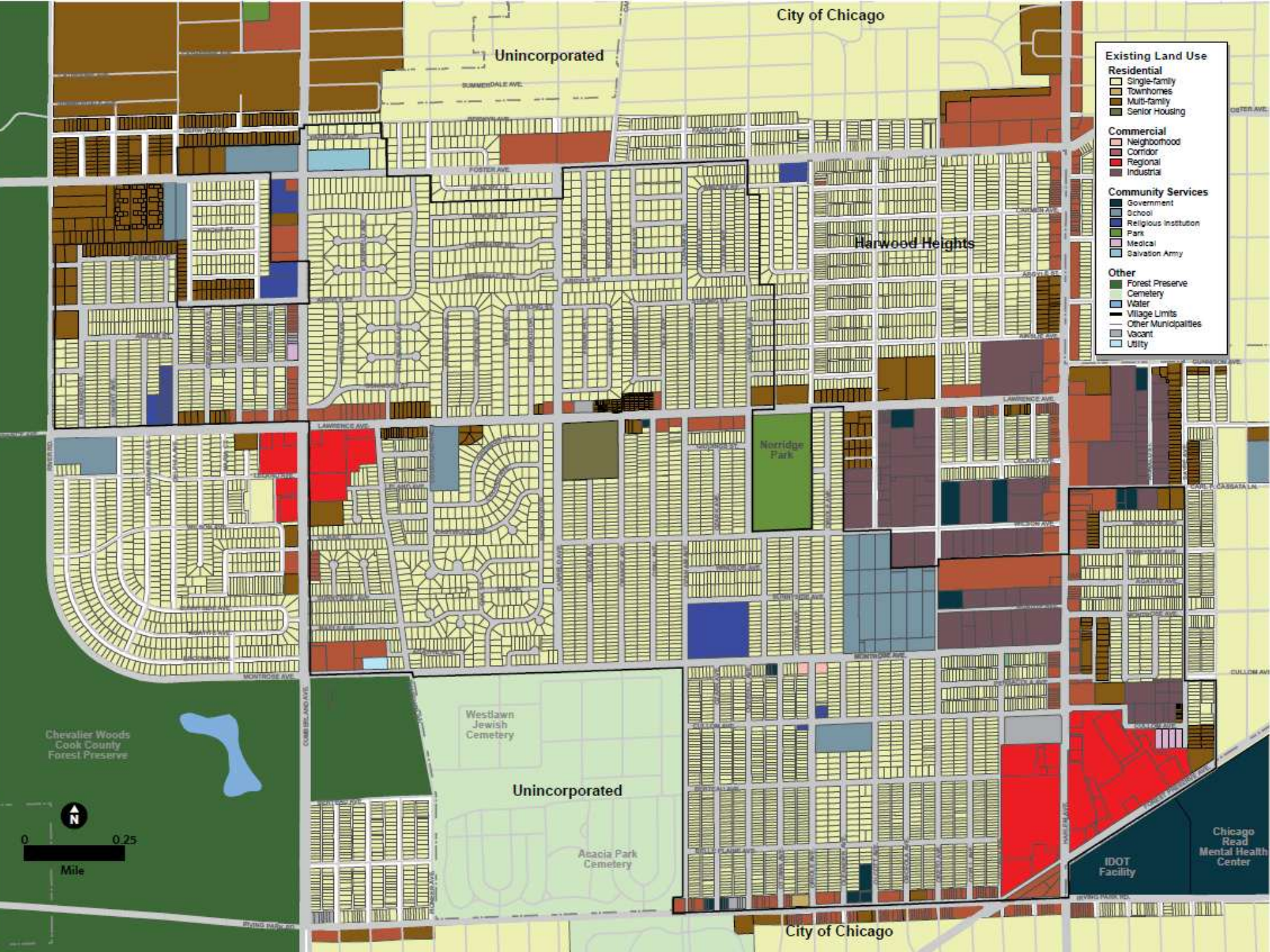
AGING IN PLACE

Defined as:

“the ability to live in one’s own home and community safely, independently, and comfortably, regardless of age, income, or ability level” (AARP)

Planning implications include:

- Housing: type, affordability, and accessibility of homes
- Transportation: availability of alternative forms of transportation, including transit and pedestrian access
- Land use: ability to access key destinations without requiring long trips
- Health: physical planning, community services, nutrition, socialization, and others



City of Chicago

Unincorporated

Harwood Heights

Norridge Park

Westlawn Jewish Cemetery

Unincorporated

Ascacia Park Cemetery

City of Chicago

- Existing Land Use**
- Residential**
 - Single-family
 - Townhomes
 - Multi-family
 - Senior Housing
 - Commercial**
 - Neighborhood
 - Corridor
 - Regional
 - Industrial
 - Community Services**
 - Government
 - School
 - Religious Institution
 - Park
 - Medical
 - Salvation Army
 - Other**
 - Forest Preserve
 - Cemetery
 - Water
 - Village Limits
 - Other Municipalities
 - Vacant
 - Utility

Chevalier Woods
Cook County
Forest Preserve



Chicago
Read
Mental Health
Center

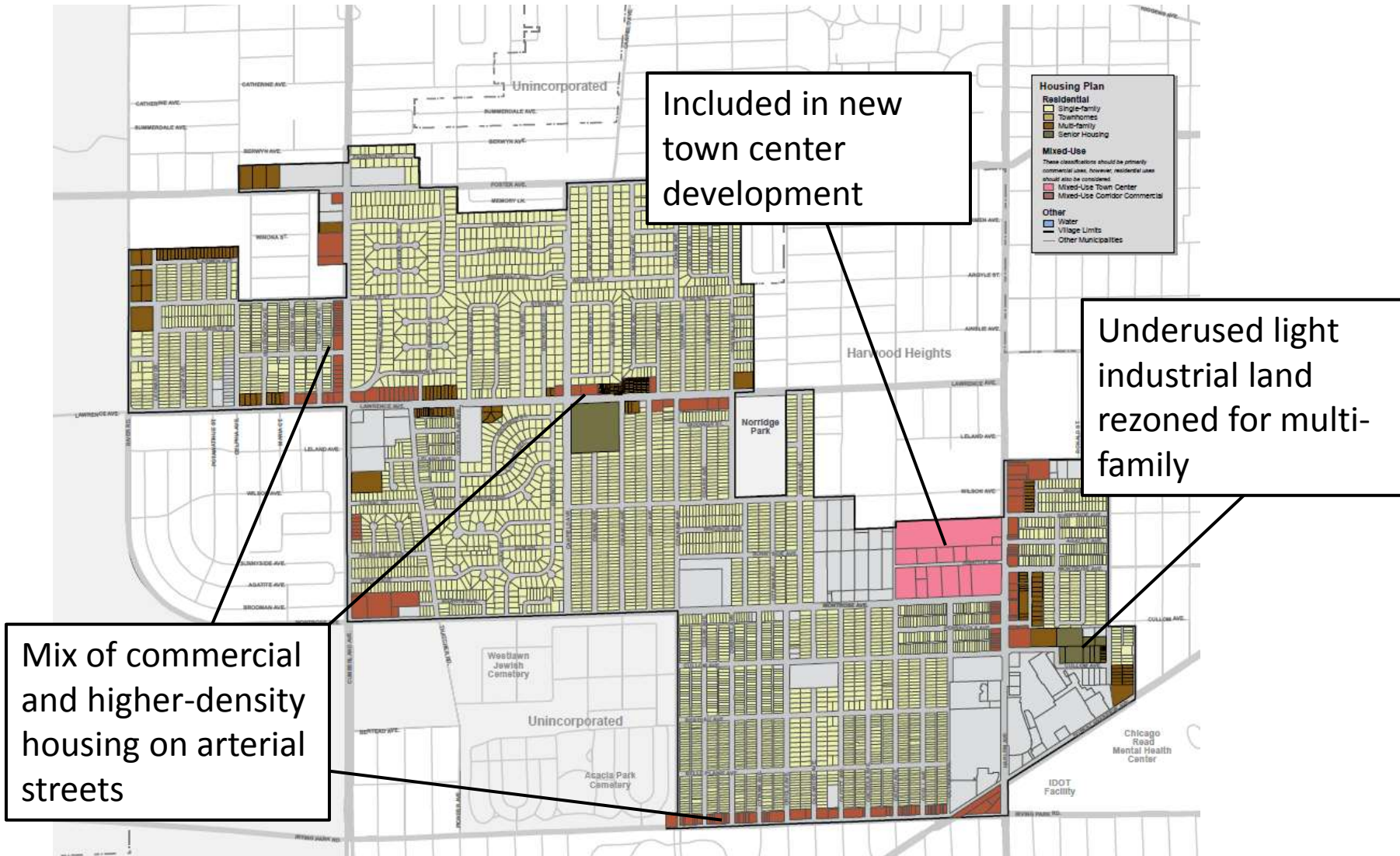
IDOT
Facility

Village of Norridge: Recommendations

MIXED-USE, WALKABLE TOWN CENTER



NEW HOUSING CHOICES



AGING IN PLACE IN EXISTING SINGLE-FAMILY HOMES

Meant to address interest by older residents in remaining in their homes as long as they are able:

- Support for *universal design principles* – incorporate into codes and ordinances; provide information to residents; consider matching grant program
- Encourage residents to pursue *energy efficiency retrofits* including Energy Impact Illinois (EI2) – provide information through Senior Assistance Center; consider financial role
- Investigate and participate in other models like *home sharing* programs (operated by Center of Concern, in Park Ridge) or *Elder Village* nonprofit organizations
- Support informal programs, like linking high school volunteers with elderly residents for yard work and home maintenance

NEIGHBORHOOD COMMERCIAL



TRANSPORTATION IMPROVEMENTS – PEDESTRIAN ACCESS



COMMUNITY HEALTH PROGRAMS AND PROVIDERS

Community health is directly addressed by the physical planning recommendations already described (housing, land use, and transportation).

In addition, plan recommends:

- Attract new *small-scale health care facilities and providers* by marketing the village to these groups and aligning regulations with the needs of health facilities
- Encourage *coordination among senior service providers* – including Senior Assistance Center, Park District, privately operated senior housing, religious institutions
- Support *Senior Assistance Center* (primary senior services provider) to expand and strategically improve services
- Communicate with *other similar communities* with large senior populations

NEXT STEPS

Approval process:

- Draft plan currently under review by staff
- Presentation to Plan Commission on April 24
- Open house and public hearing in May
- Approval by Village Board expected in June

Post-adoption:

- Plan identifies short-term implementation actions to advance its recommendations
- CMAP will meet with the village (approximately quarterly) for a two-year period to help monitor progress, coordinate with external organizations, apply for grants, etc
- CMAP will update the village's zoning ordinance as a follow-up project – likely beginning in September 2012