

Visual Preference Survey

05

A web-based visual preference survey (VPS) was provided on the Project Website. To date, there have been 148 surveys recorded over a 14 week period. The VPS provided interested participants with an opportunity to convey their preference for the types of streetscape elements they would like to see in the Glen Ellyn Downtown. Participants were asked to rate images on a scale of 1 to 5 based on their feelings of “character and appropriateness” with 1 meaning the image was inappropriate or undesirable and 5 indicating the image was appropriate or desirable. A complete summary of the VPS is provided on the following pages and fall into the following categories:

- Landscaping in the Public Realm
- Varying Sidewalk Widths
- Tree Grate-Openings
- Paving Materials
- Street Furniture
- Fencing + Screening
- Parking Management
- Sustainable Streetscape Elements



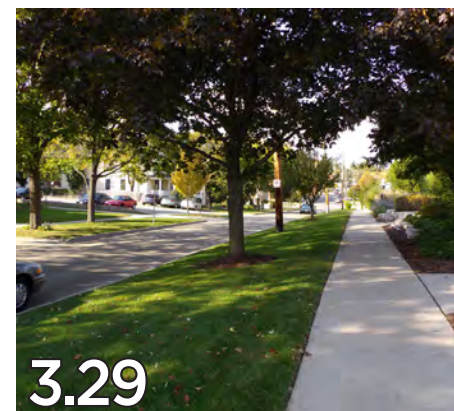
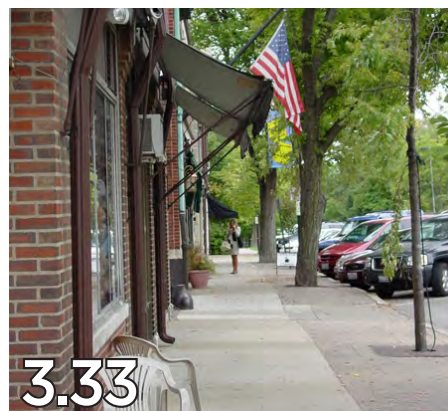
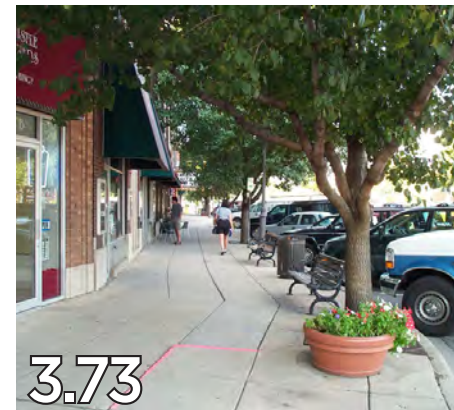
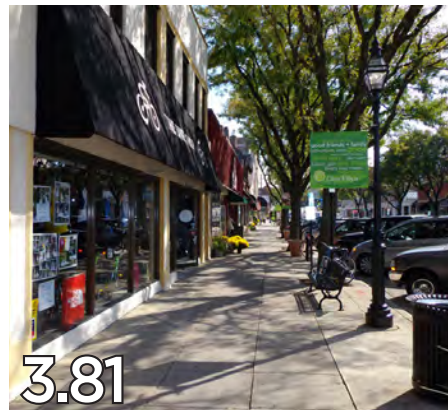
These images were identified as some of the most appropriate for the Glen Ellyn Downtown.



LANDSCAPING IN
THE PUBLIC REALM



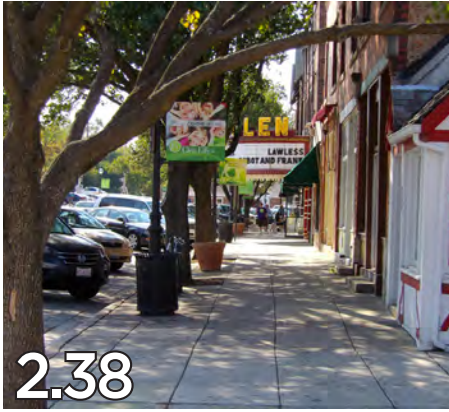
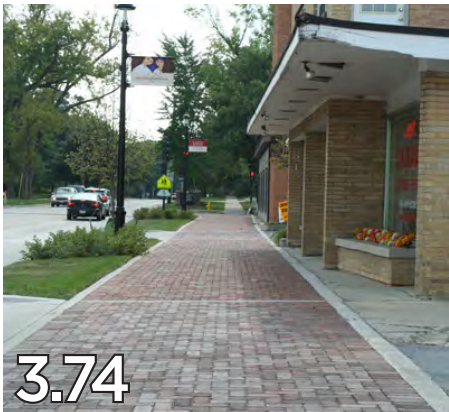
VARYING SIDEWALK WIDTHS



TREE GRATE-
OPENINGS



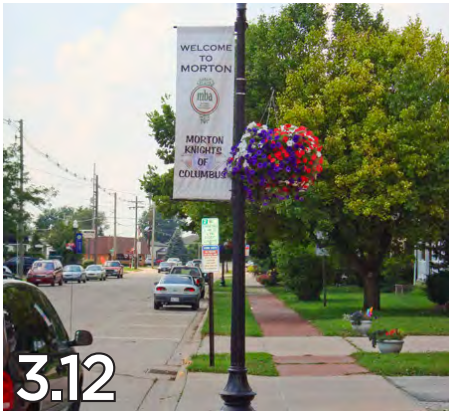
PAVING MATERIALS



STREET FURNITURE



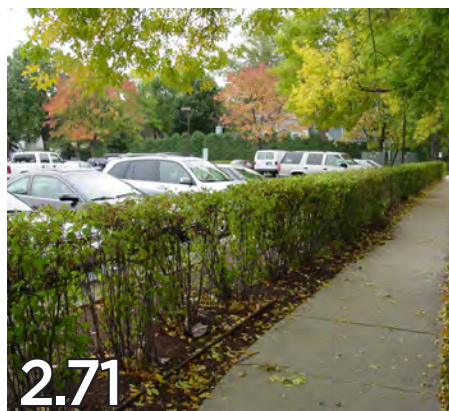
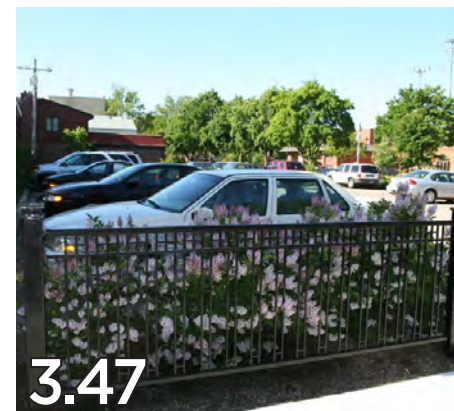
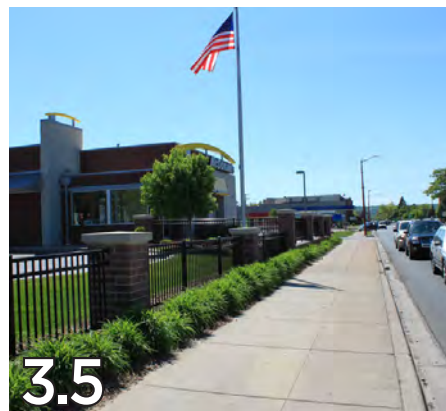
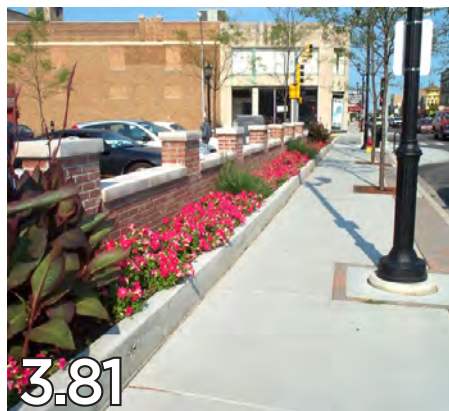
STREET LIGHTING



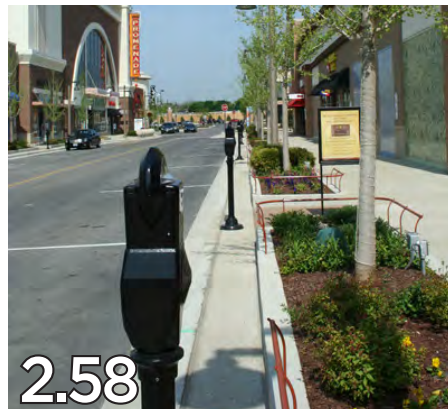
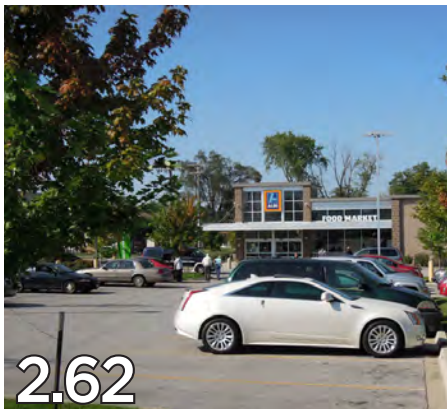
INTERSECTION ENHANCEMENTS



FENCING + SCREENING



PARKING MANAGEMENT



SUSTAINABLE STREETSCAPE ELEMENTS

