



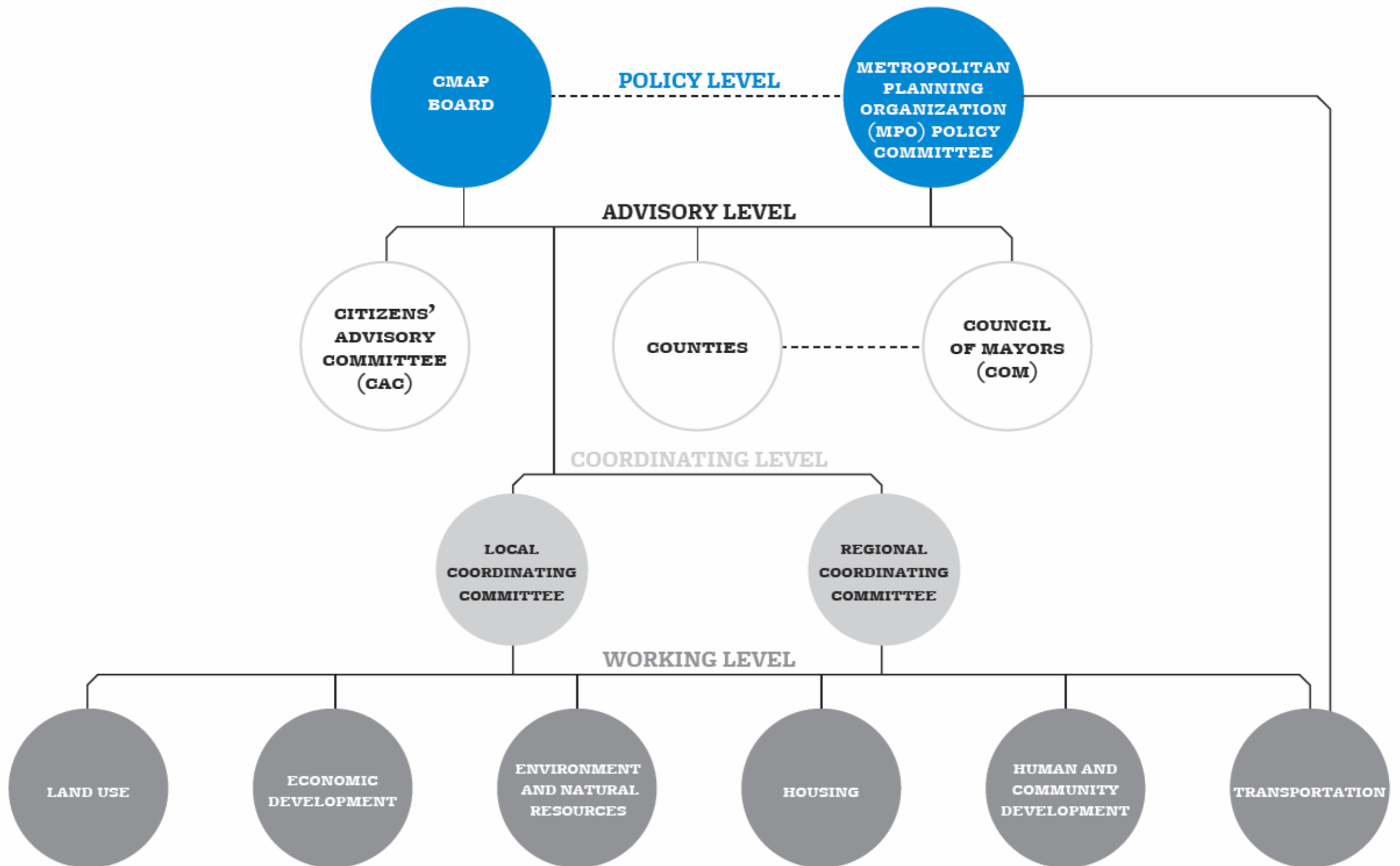
# CMAP GO TO 2040



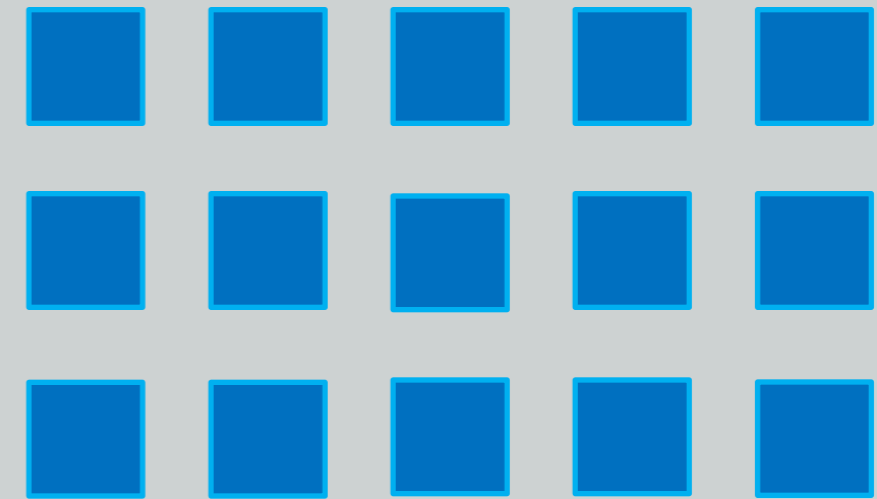
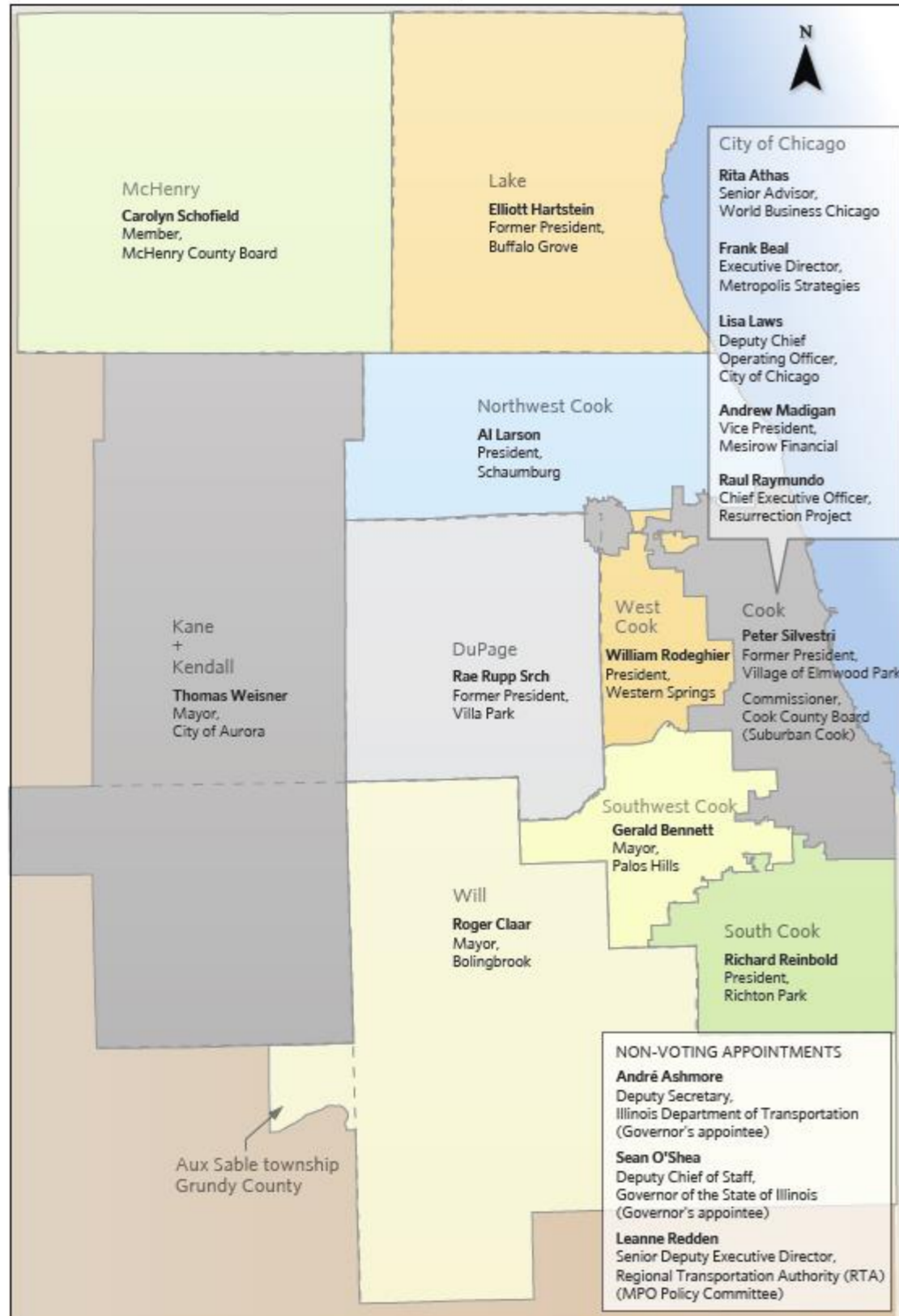


## **ABOUT CMAP**

**Established in 2005 by the IL General Assembly at the urging of local elected officials and business leaders.**

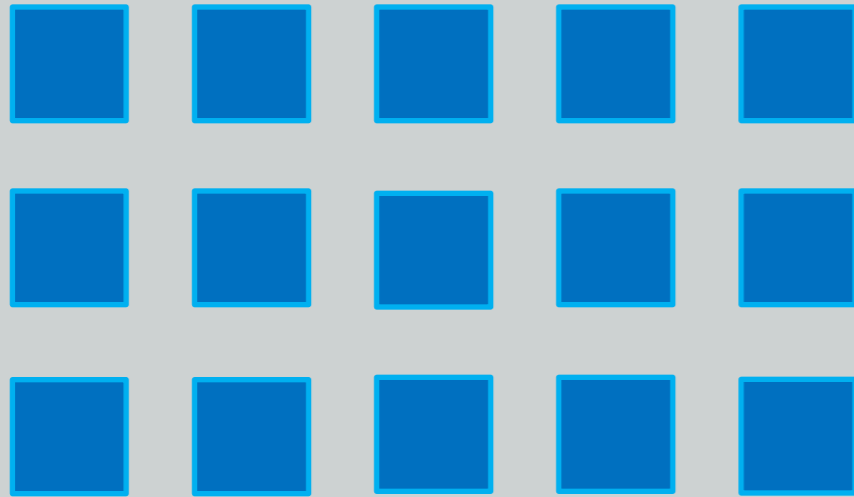


# CMAP Board Composition



**CMAP Board.**  
15 members,  
appointed by  
geography.





**Working Committees.** Open membership\*,  
topically focused – 6 committees; over 100  
members.

Economic  
Development

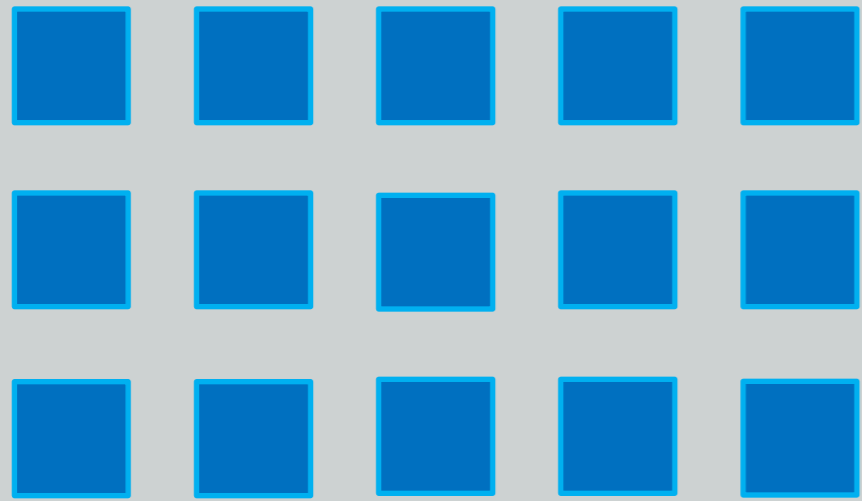
Environment and  
Natural Resources

Housing

Human and  
Community  
Development

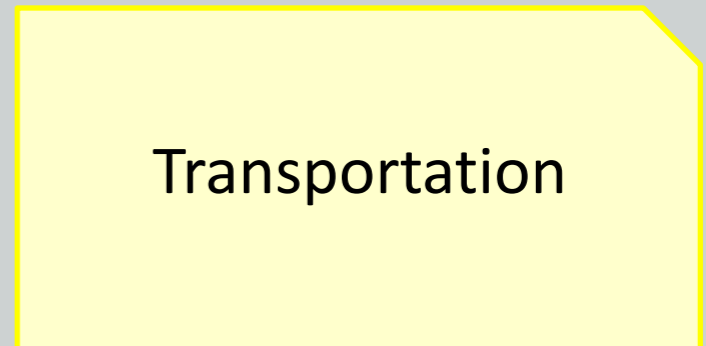
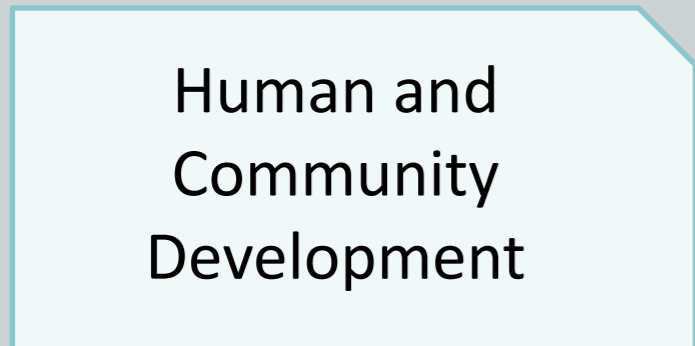
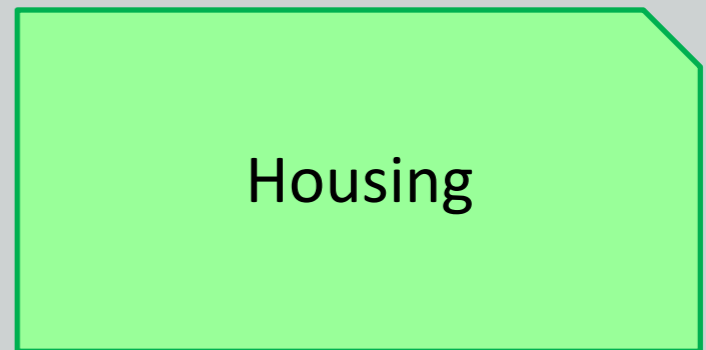
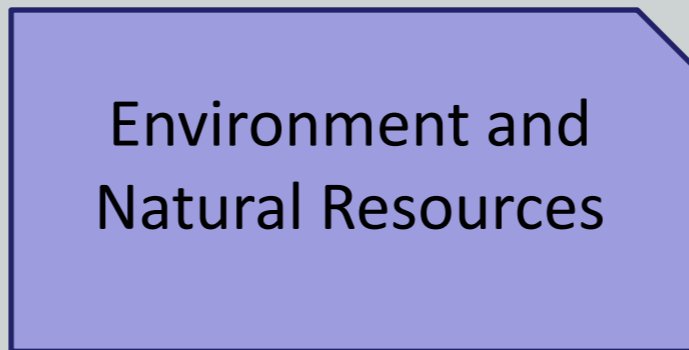
Land Use

Transportation\*



## Local and Regional Coordinating Committees.

Each with 7 Board members and 6 working committee members.





# CMAP is the MPO for NE IL

- Urban Boundaries & Functional Classification
- Travel Demand Model & Traffic Projections
- Develop regional Long Range Transportation Plan:  
GO TO 2040
- Air Quality Conformity



# CMAP is the MPO for NE IL

- Program federal funds via the Transportation Improvement Program (TIP)
- Program local STP (urban funds) through Council of Mayors
- Directly program CMAQ
- Monitor all other federal sources, regionally significant projects





# Core MPO Functions

- **Establish a setting**
- **Identify and evaluate alternative transportation improvement options**
- **Prepare and maintain a Metropolitan Transportation Plan (MTP)**
- **Develop a Transportation Improvement Program (TIP)**
- **Involve the public**

Source: FHWA-HEP-07-039 *A Briefing Book for Transportation Decisionmakers, Officials, and Staff*



# Core MPO Functions

- **Establish a setting:** Establish and manage a fair and impartial setting for effective regional decision making in the metropolitan area.
- **Identify and evaluate alternative transportation improvement options:** Use data and planning methods to generate and evaluate alternatives. Planning studies and evaluations are included in the Unified Planning Work Program or UPWP.



# Core MPO Functions

- **Prepare and maintain a Metropolitan Transportation Plan (MTP):** Develop and update a long-range transportation plan for the metropolitan area covering a planning horizon of at least twenty years that fosters (1) mobility and access for people and goods, (2) efficient system performance and preservation, and (3) good quality of life.

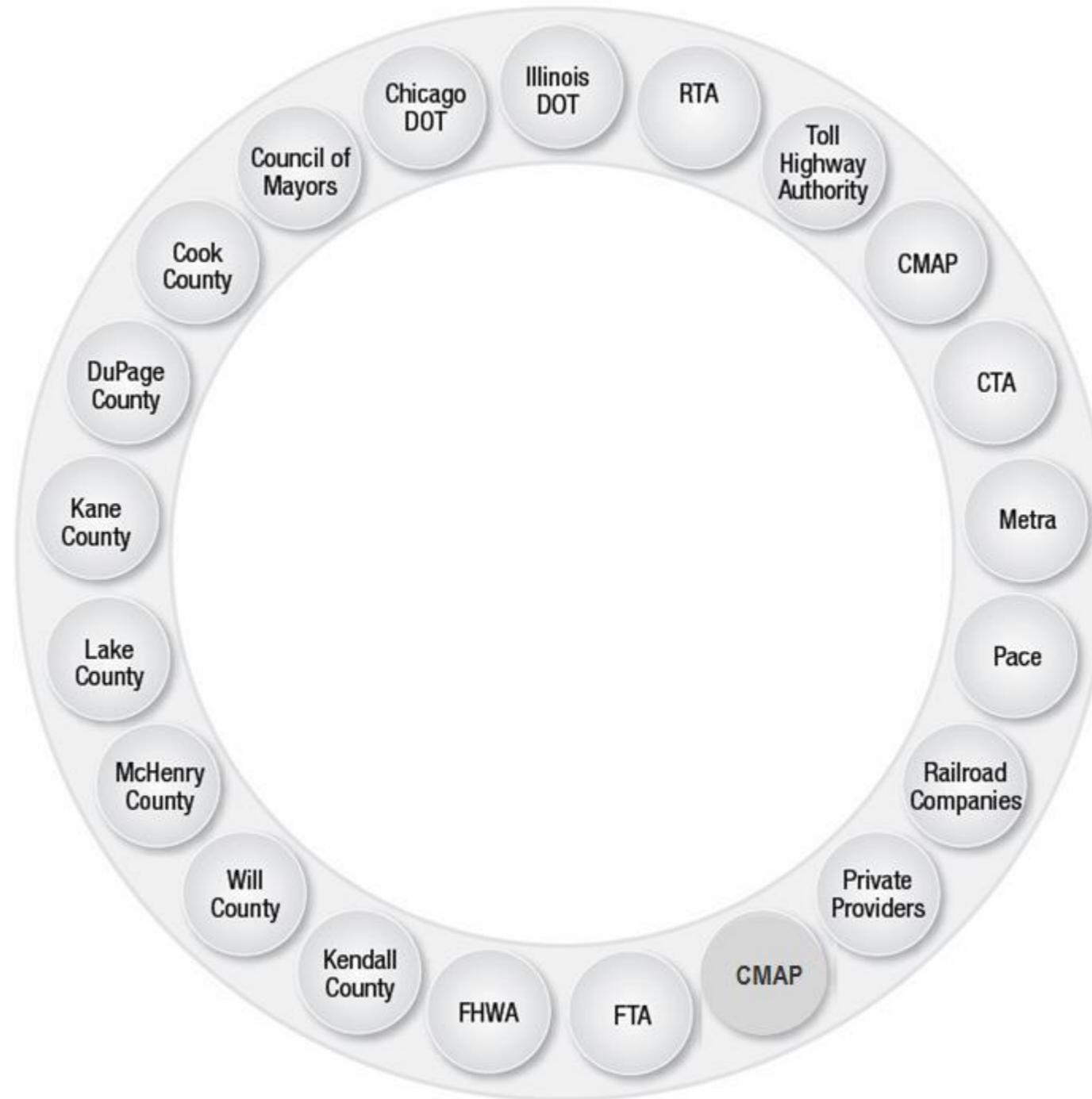


# Core MPO Functions

- **Develop a Transportation Improvement Program (TIP):** Develop a short-range (four-year) program of transportation improvements based on the long-range transportation plan; the TIP should be designed to achieve the area's goals, using spending, regulating, operating, management, and financial tools.
- **Involve the public:** Involve the general public and other affected constituencies in the four essential functions listed above.



# MPO Composition





# MPO Charge

The MPO Policy Committee is designated by the governor of Illinois and northeastern Illinois local officials as the region's Metropolitan Planning Organization (MPO). It is the decision-making body for all regional transportation plans and programs for this area. The MPO Policy Committee plans, develops and maintains an affordable, safe and efficient transportation system for the region, providing the forum through which local decision makers develop regional plans and programs.



## The MPO and the CMAP Board

On March 14, 2007, the MPO Policy Committee and the CMAP Board adopted a Memorandum of Understanding with regard to transportation planning and programming in Northeastern Illinois that has been re-affirmed annually. The agreement covers the working relationship between the two boards, whose responsibilities are defined in the Regional Planning Act and federal legislation.



# The Metropolitan Transportation Plan: GO TO 2040

- **Regional Comprehensive Plan:**
  - Provides policy framework to meet locally determined vision for 2040
  - Guidance (not mandates) for local planning decisions
- **Long Range Transportation Plan**
  - Meet future travel demand
  - Meet air quality standards
  - Fiscally constrained
  - Major Capital Projects (planned, progressing, meet constraint)
  - Unconstrained Projects (planned, but no funding)





# What is the TIP?

- **4 year fiscally constrained program of funded projects, plus illustrative line items in out years**
- **Federally funded or regionally significant projects within the CMAP Planning Area must be included in the TIP in order to receive authorization**
- **TIP is incorporated into the STIP, which includes federally funded projects outside the MPO area**
- **Routinely amended to reflect project changes submitted by implementers**



## **ABOUT CMAP**

**Mission: to plan comprehensively for economic prosperity and quality of life.**



## **ABOUT CMAP**

**CMAP serves the third largest  
U.S. metropolitan region:**

**7 Counties**

**284 Municipalities**

**Over 1,200 units of local government**



## **ABOUT CMAP**

**CMAP serves the third largest  
U.S. metropolitan region:**

**7 Counties**

**284 Municipalities**

**Over 1,200 units of local government**



## **ABOUT CMAP**

**CMAP serves the third largest  
U.S. metropolitan region:**

**7 Counties**

**284 Municipalities**

**Over 1,200 units of local government**



---

## **GOVERNMENT UNITS IN METRO CHICAGO**

# **1,226**

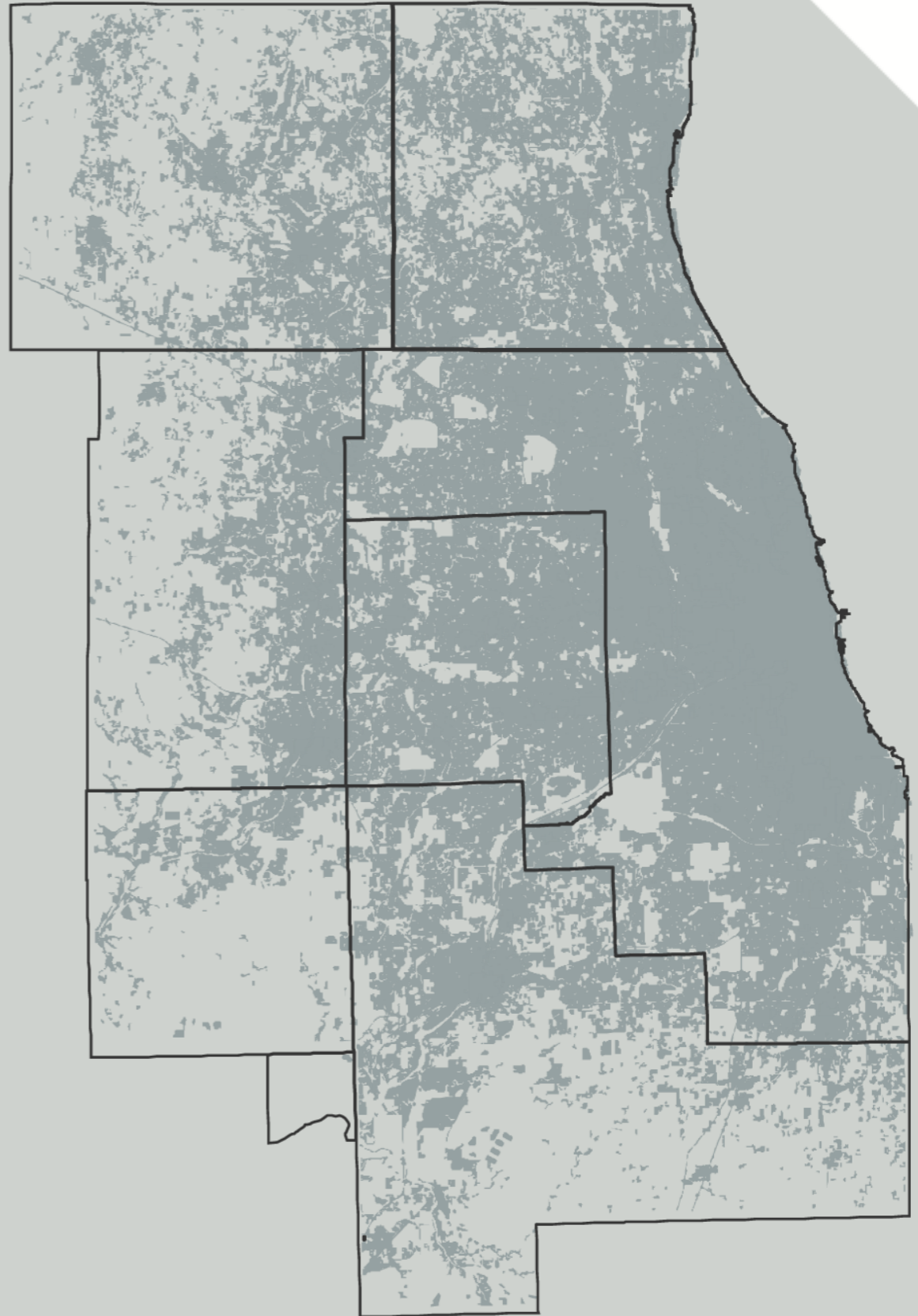
|            |                          |
|------------|--------------------------|
| <b>7</b>   | <b>Counties</b>          |
| <b>284</b> | <b>Municipalities</b>    |
| <b>123</b> | <b>Townships</b>         |
| <b>307</b> | <b>School Districts</b>  |
| <b>136</b> | <b>Fire Districts</b>    |
| <b>173</b> | <b>Park Districts</b>    |
| <b>108</b> | <b>Library Districts</b> |
| <b>88</b>  | <b>Miscellaneous</b>     |



---

## **DEVELOPED AREA, 2005**

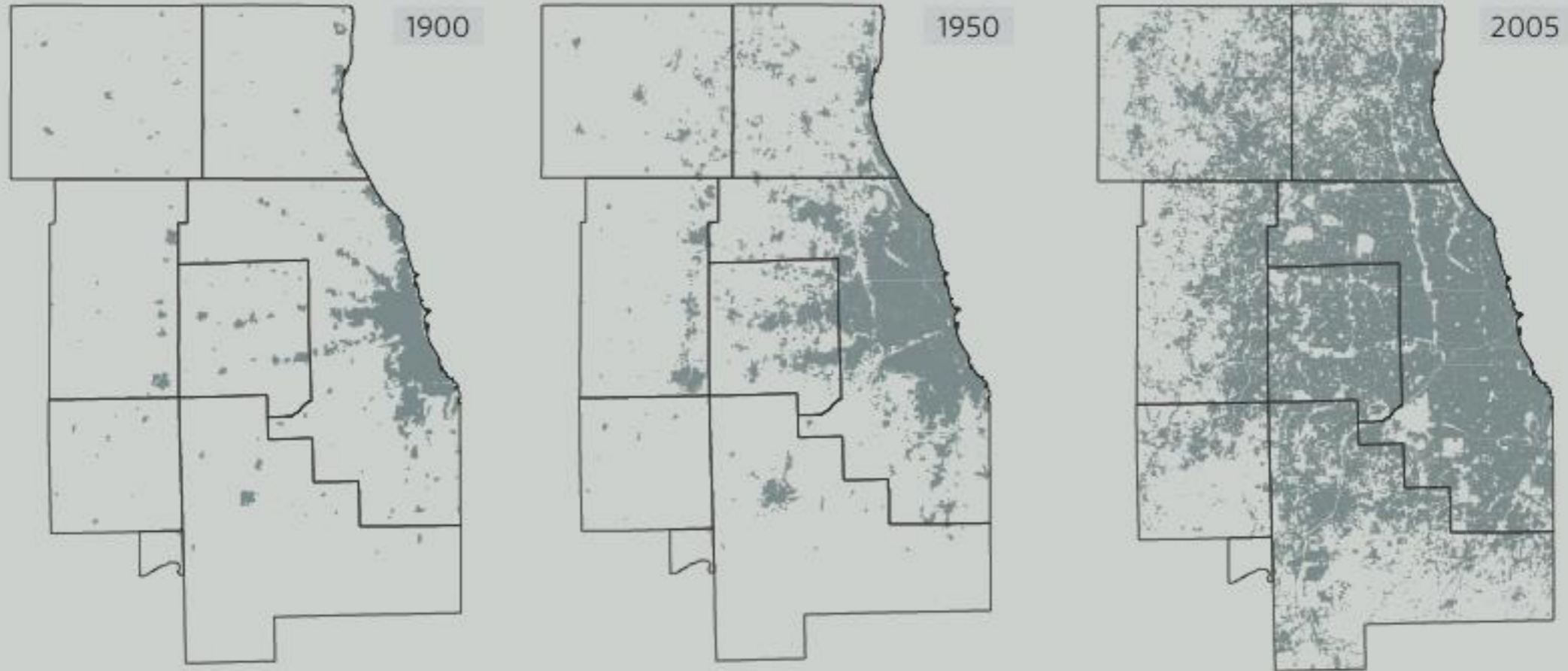
Source: U.S. Environmental Protection Agency and CMAP





## DEVELOPED AREA 1900–2005

Source: U.S. Environmental Protection Agency and CMAP







---

**By 2040, our region will need to  
accommodate 25% more residents**

**8,600,000**

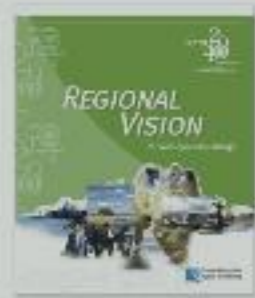
**TODAY**

**11,000,000**

**BY 2040**



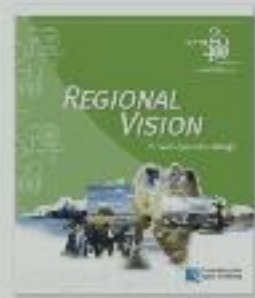
## DEVELOPING THE GO TO 2040 PLAN



- 1 **Regional Vision**  
(Fall 2007 to Spring 2008)
- 2 **Research of Existing Conditions** (2008-2009)
- 3 **Public Input on Potential Strategies** (Continuous)
- 4 **Preferred Regional Scenario** (January 2010)
- 5 **Draft Plan**  
(June-September 2010)
- 6 **Plan Adopted Unanimously**  
(October 2010)



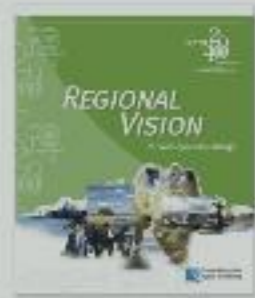
## DEVELOPING THE GO TO 2040 PLAN



- 1 **Regional Vision**  
(Fall 2007 to Spring 2008)
- 2 **Research of Existing Conditions** (2008-2009)
- 3 **Public Input on Potential Strategies** (Continuous)
- 4 **Preferred Regional Scenario** (January 2010)
- 5 **Draft Plan**  
(June-September 2010)
- 6 **Plan Adopted Unanimously**  
(October 2010)



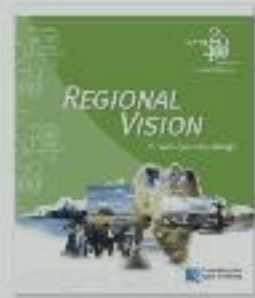
## DEVELOPING THE GO TO 2040 PLAN



- 1 **Regional Vision**  
(Fall 2007 to Spring 2008)
- 2 **Research of Existing Conditions** (2008-2009)
- 3 **Public Input on Potential Strategies** (Continuous)
- 4 **Preferred Regional Scenario** (January 2010)
- 5 **Draft Plan**  
(June-September 2010)
- 6 **Plan Adopted Unanimously**  
(October 2010)



## DEVELOPING THE GO TO 2040 PLAN



- 1 **Regional Vision**  
(Fall 2007 to Spring 2008)
- 2 **Research of Existing Conditions** (2008-2009)
- 3 **Public Input on Potential Strategies** (Continuous)
- 4 **Preferred Regional Scenario** (January 2010)
- 5 **Draft Plan**  
(June-September 2010)
- 6 **Plan Adopted Unanimously**  
(October 2010)



## DEVELOPING THE GO TO 2040 PLAN



- 1 **Regional Vision**  
(Fall 2007 to Spring 2008)
- 2 **Research of Existing Conditions** (2008-2009)
- 3 **Public Input on Potential Strategies** (Continuous)
- 4 **Preferred Regional Scenario** (January 2010)
- 5 **Draft Plan**  
(June-September 2010)
- 6 **Plan Adopted Unanimously**  
(October 2010)



## DEVELOPING THE GO TO 2040 PLAN



- 1 **Regional Vision**  
(Fall 2007 to Spring 2008)
- 2 **Research of Existing Conditions** (2008-2009)
- 3 **Public Input on Potential Strategies** (Continuous)
- 4 **Preferred Regional Scenario** (January 2010)
- 5 **Draft Plan**  
(June-September 2010)
- 6 **Plan Adopted Unanimously**  
(October 2010)

CMAP



GO TO

20

40



# Livable Communities



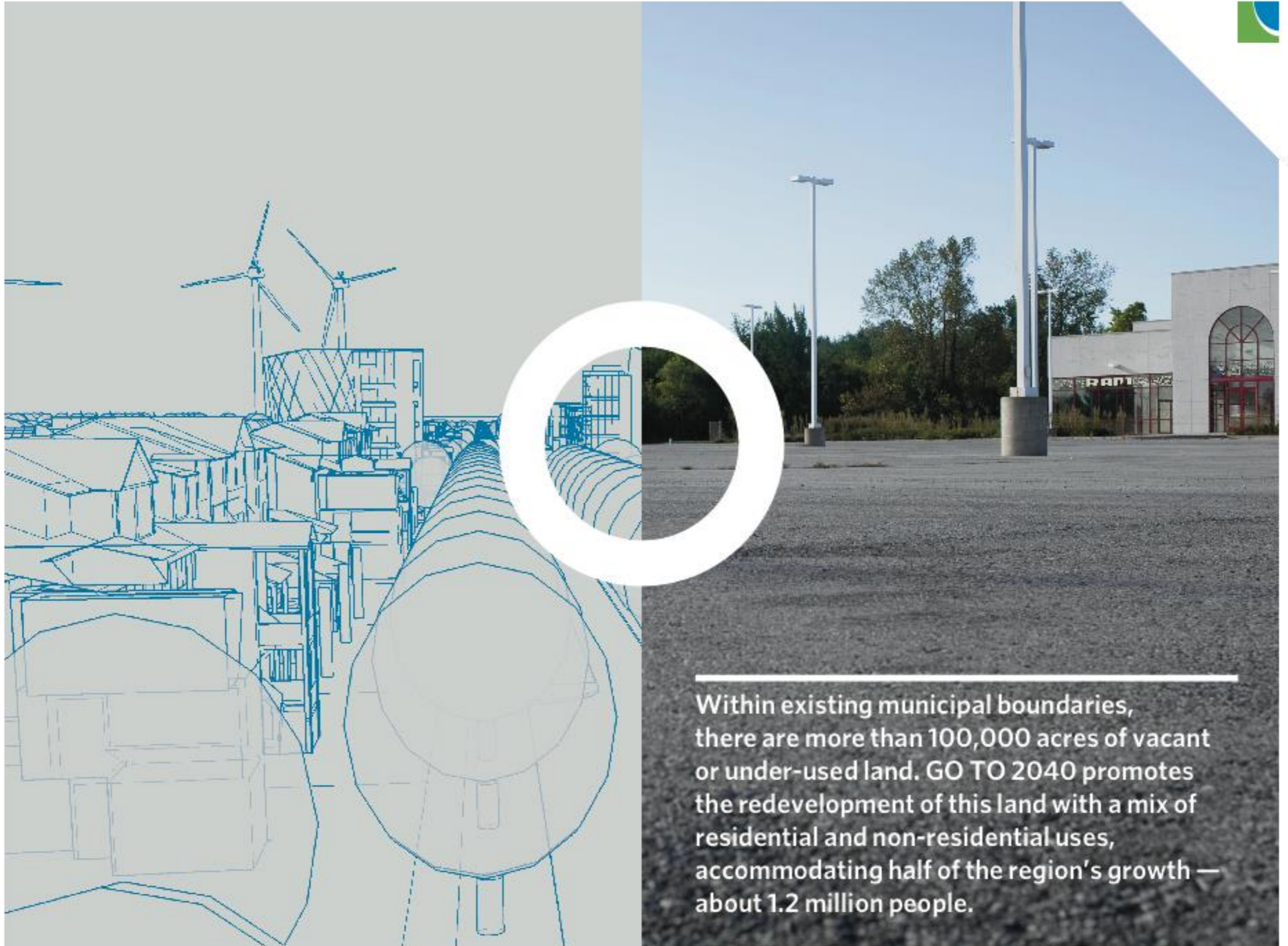


## RECOMMENDATION

1

# Achieve greater livability through land use and housing





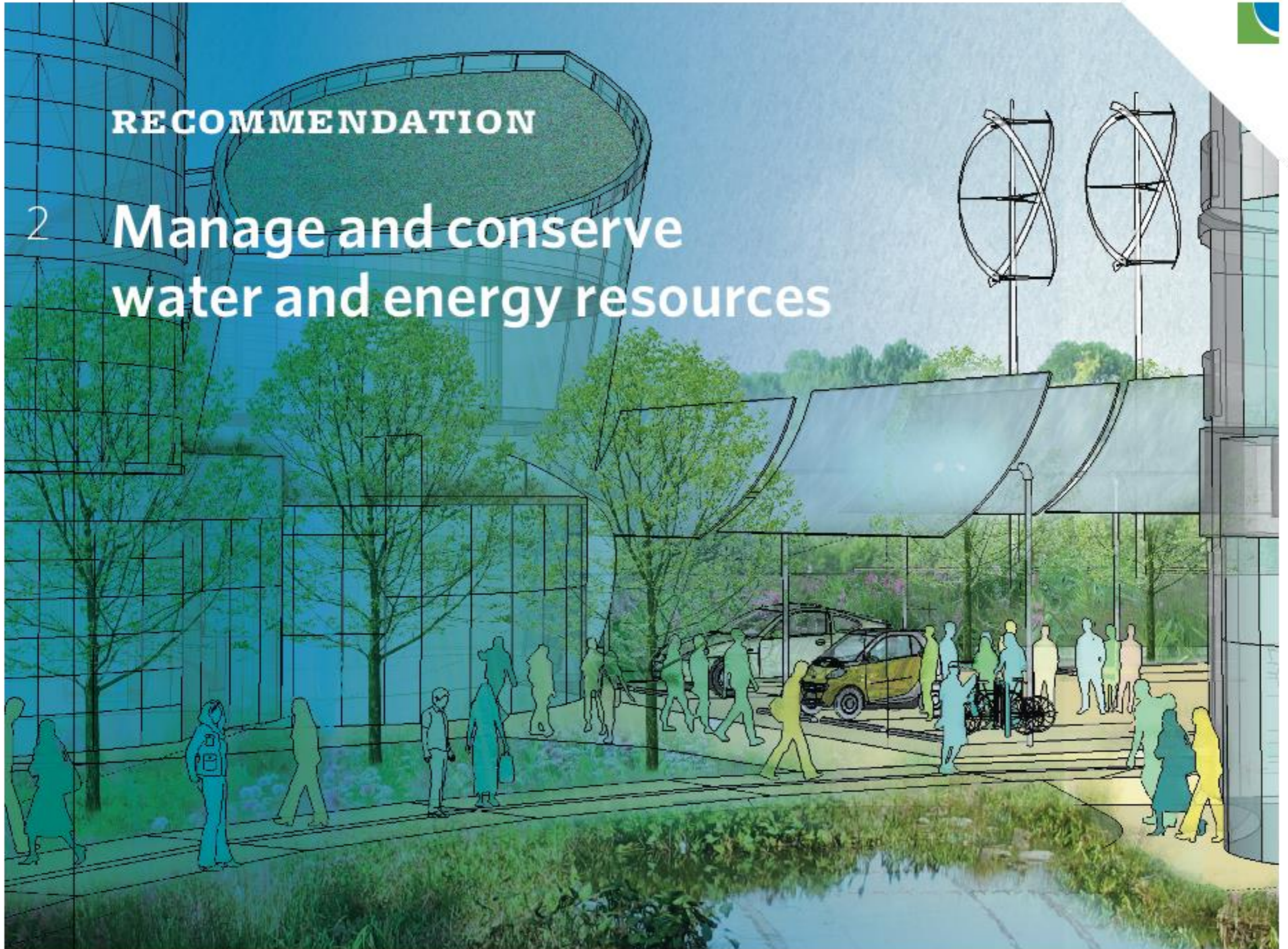
---

Within existing municipal boundaries, there are more than 100,000 acres of vacant or under-used land. GO TO 2040 promotes the redevelopment of this land with a mix of residential and non-residential uses, accommodating half of the region's growth — about 1.2 million people.



## RECOMMENDATION

# 2 Manage and conserve water and energy resources





---

If 50% of our region put these three water conservation measures into place, we could reduce daily water use by almost 20 gallons per person.

**UPDATE FIXTURES**

↓ **86,200,000 gals/day**



**UPDATE TOILETS**

↓ **74,800,000 gals/day**



**CONSERVE USAGE**

↓ **60,300,000 gals/day**





---

## **DAILY WATER USAGE**

**TODAY**

**172 gals/person**

**GO TO 2040**

**↓ 139 gals/person**



## RECOMMENDATION

3

# Expand and improve parks and open space





---

## **POPULATION WITH ADEQUATE PARK ACCESS**

10 acres/1,000 people

TODAY **49%**

GO TO 2040 **70%**





**RECOMMENDATION**

4

**Promote sustainable local food**



# Human Capital





**RECOMMENDATION**

5

**Improve education and  
workforce development**

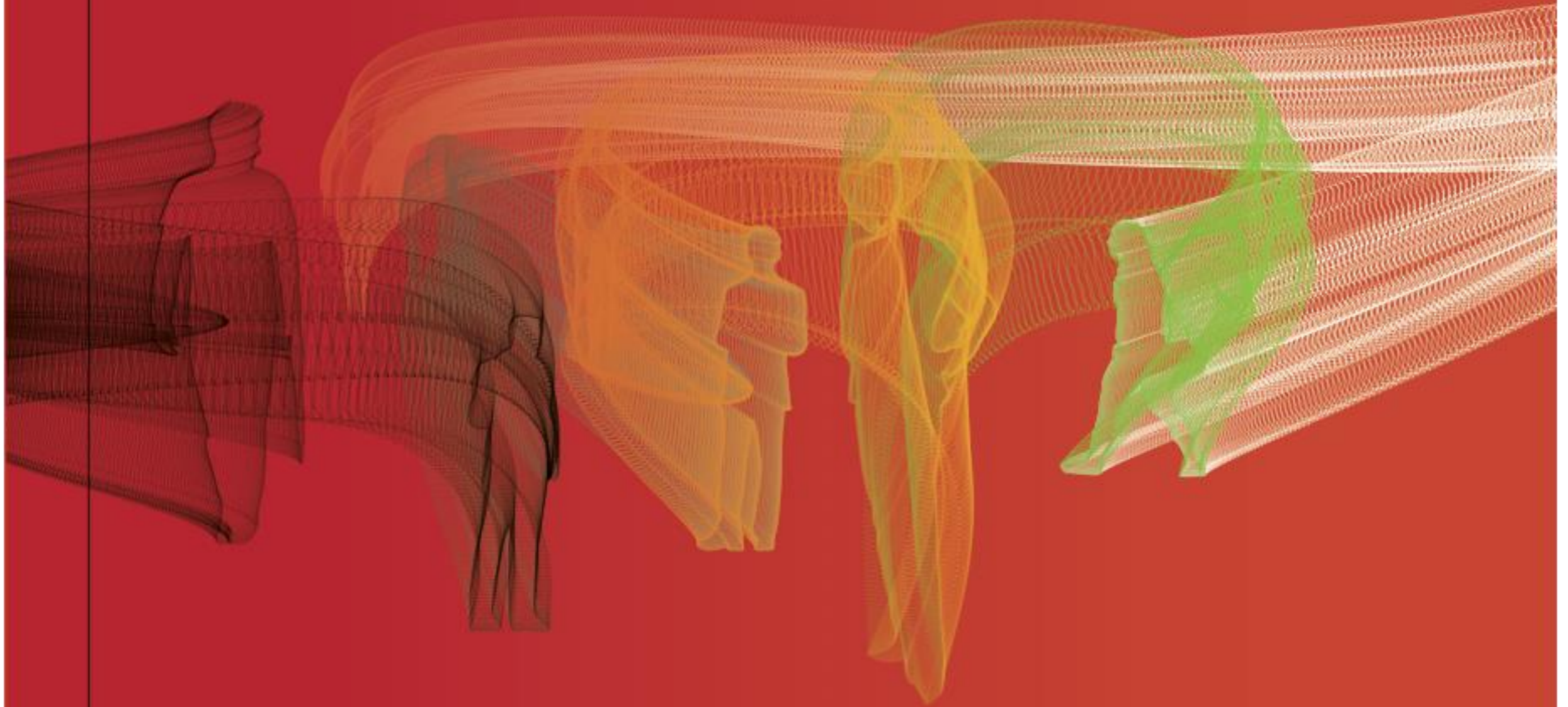




## RECOMMENDATION

6

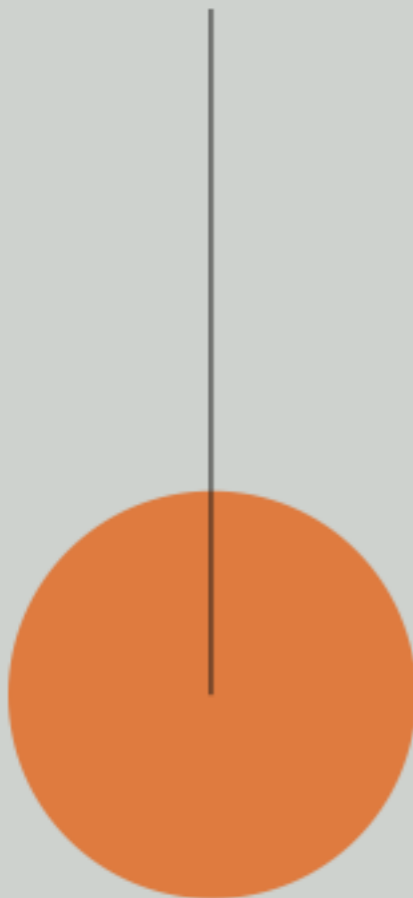
# Support economic innovation





**We should support innovation that generates new products and technologies in areas of regional strength.**

**BUSINESS/  
FINANCIAL**



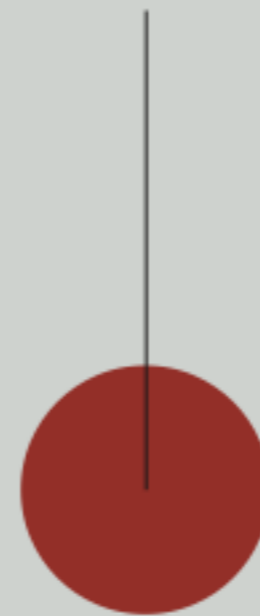
**BIOMED/  
BIOTECH**



**TRANSPORTATION/  
LOGISTICS**



**ADVANCED  
MATERIALS**



**MANUFACTURING**



**INFOTECH/  
TELECOM**



# Efficient Governance





## RECOMMENDATION

7

# Reform state and local tax policy

**56**

Average number of  
services taxed in all states

**12**

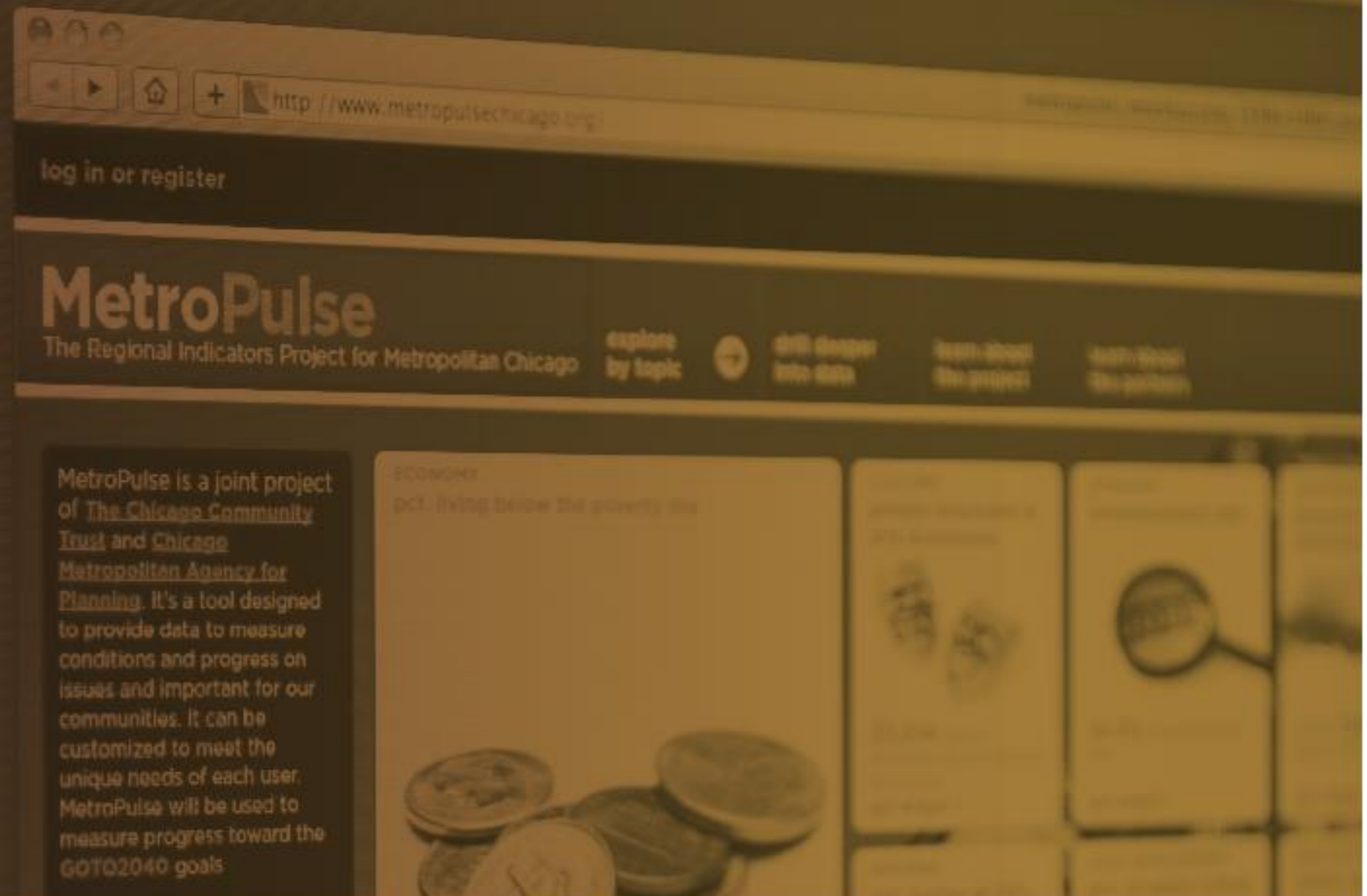
Number of services  
taxed in Illinois



## RECOMMENDATION

8

# Improve access to information



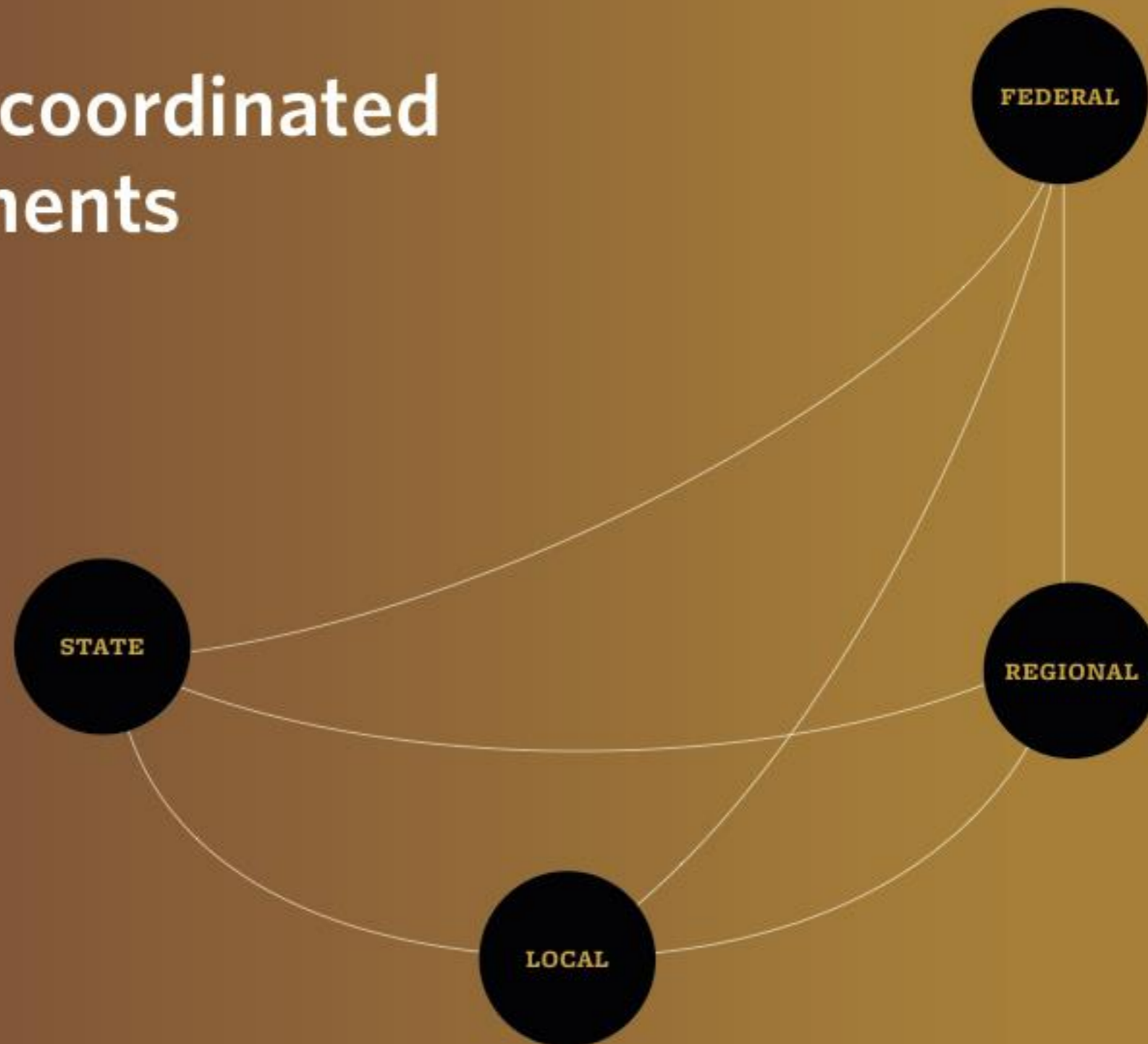




## RECOMMENDATION

9

# Pursue coordinated investments



# Regional Mobility

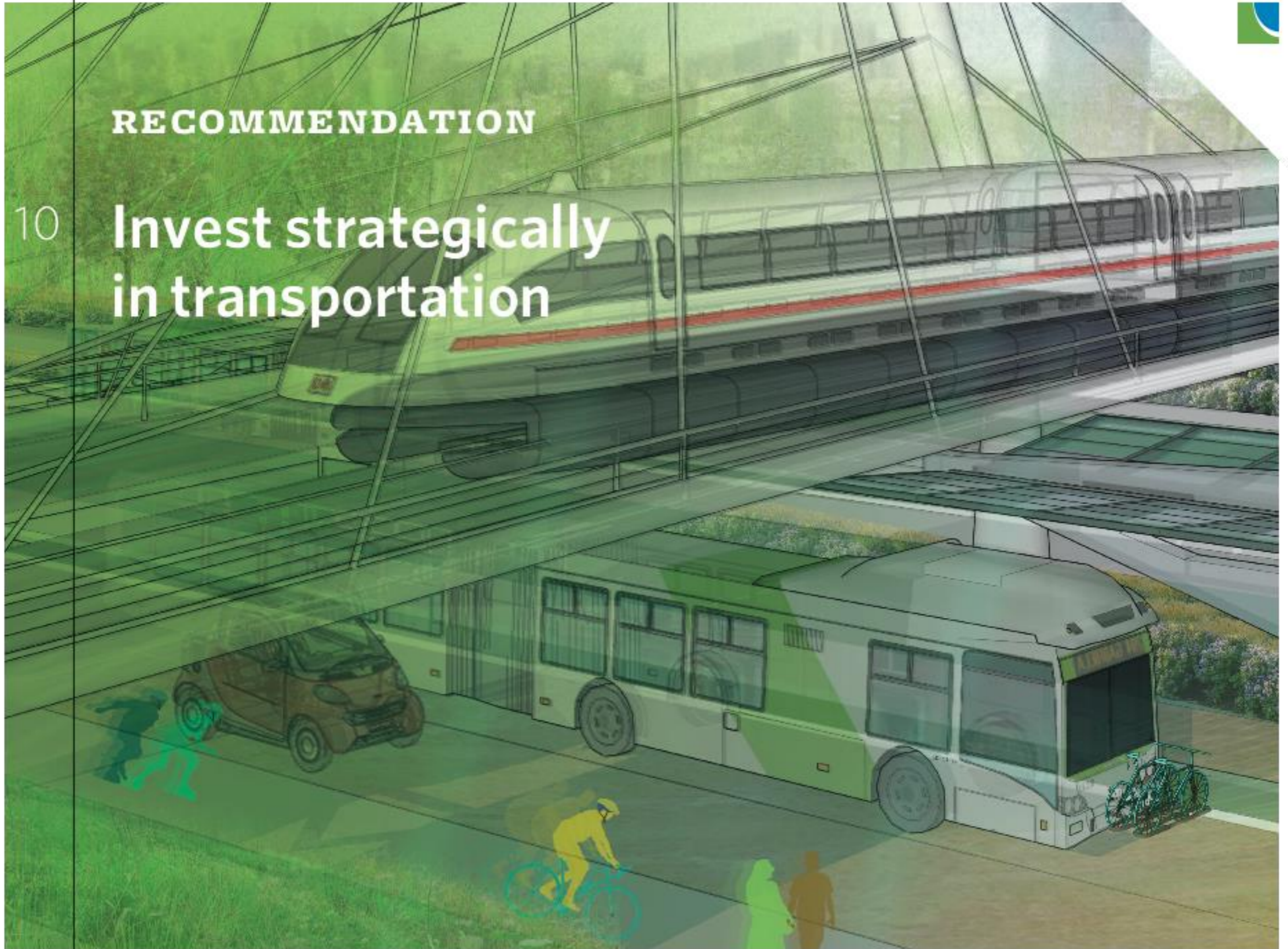




## RECOMMENDATION

10

# Invest strategically in transportation

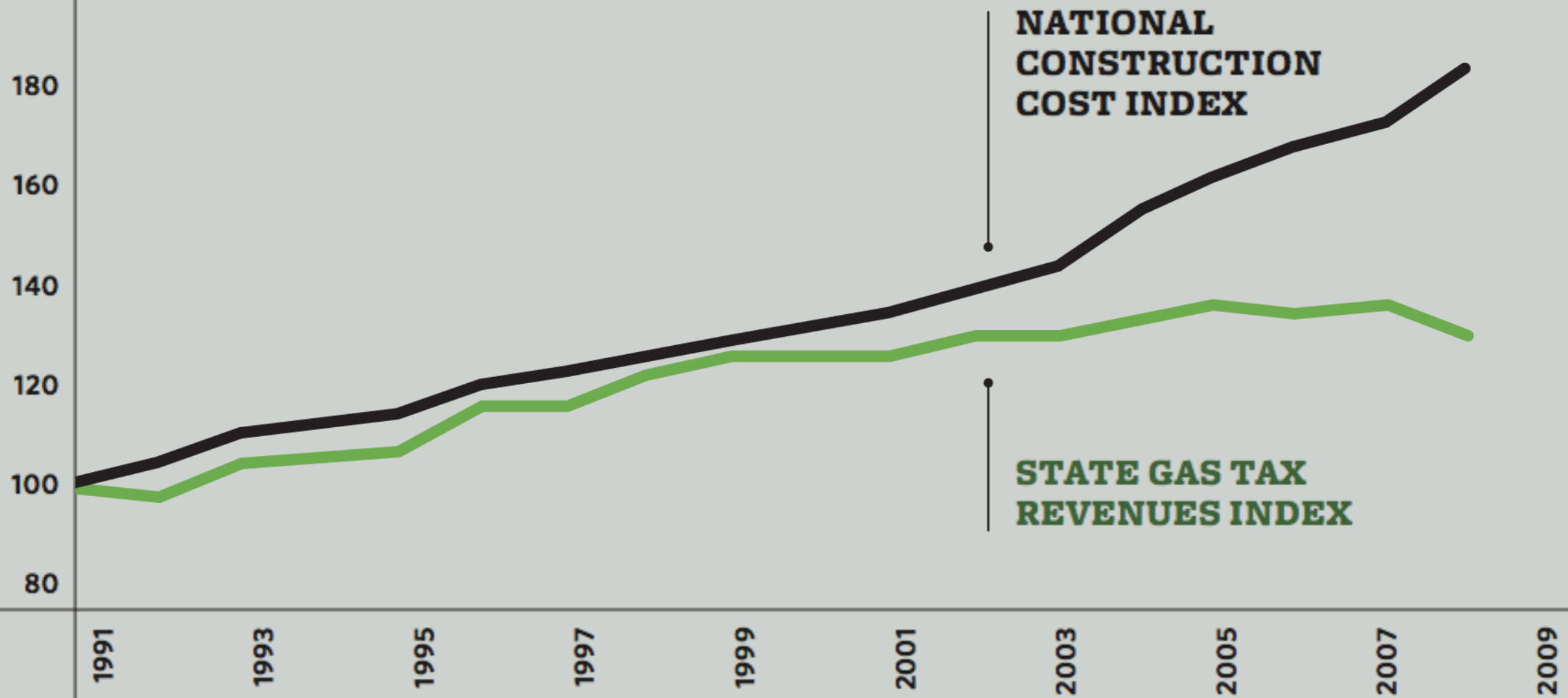




**The rising cost of construction and operations, coupled with inflation, has significantly undercut the purchasing power of the gas tax.**

Sources: Illinois Department of Transportation, Engineering News-Record, U.S. Bureau of Labor Statistics

INDEX 100=Year 1991

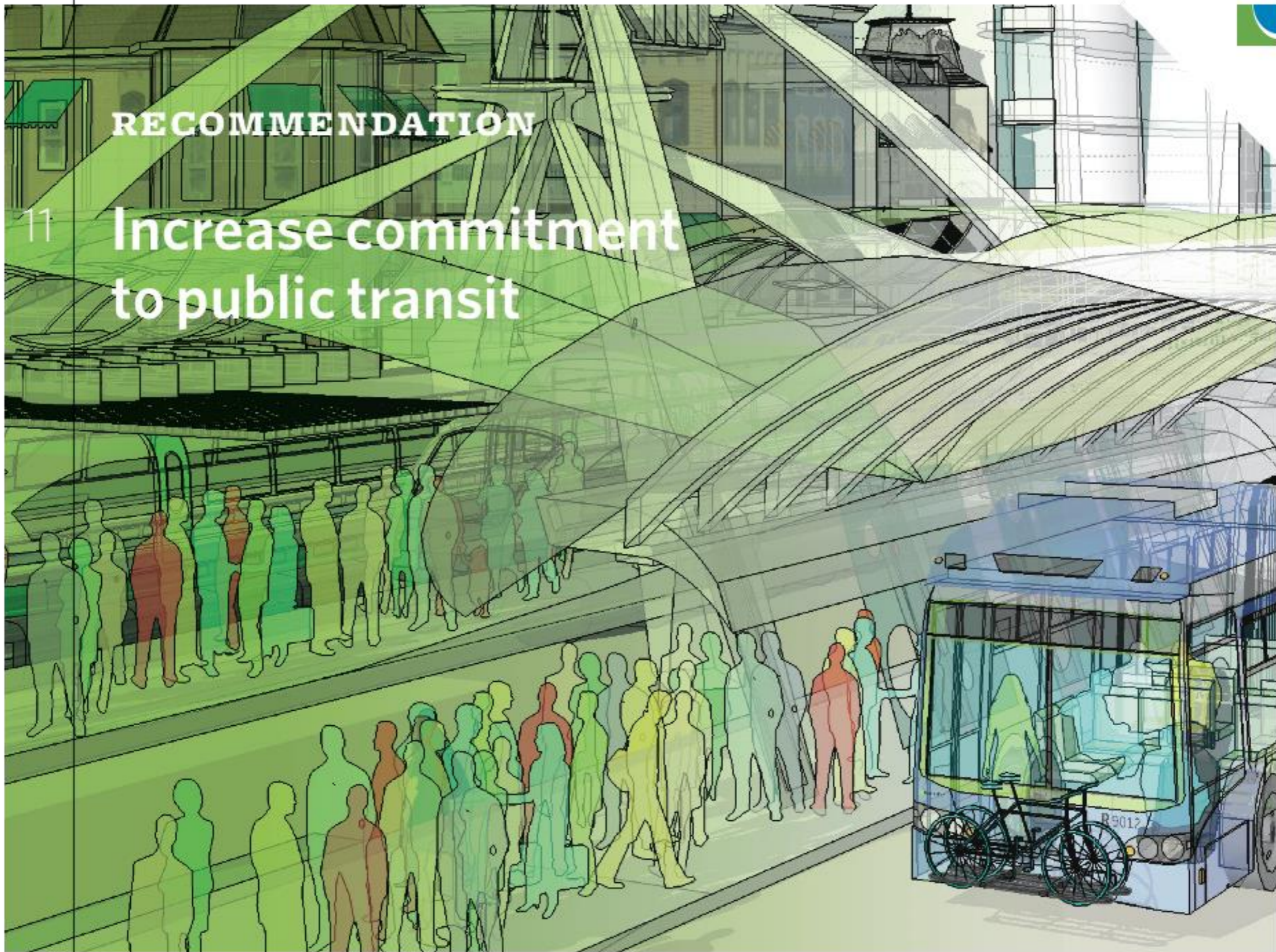


INVEST STRATEGICALLY IN TRANSPORTATION

RECOMMENDATION

11

Increase commitment  
to public transit





**\$12,500**

**ANNUAL AVERAGE COST  
OF CAR COMMUTING**

**\$1,000**

**ANNUAL AVERAGE COST  
OF TRANSIT COMMUTING**

Source: American Public  
Transportation Association



**RECOMMENDATION**

12

**Create a more efficient freight network**





---

## REGIONAL FREIGHT MOVEMENTS BY MODE

**67%**

**TRUCK**

**30%**

**RAIL**

**3%**

**OTHER**





# GO TO 2040 CAPITAL PROJECTS

- RAPID TRANSIT
- COMMUTER RAIL
- MULTIMODAL CORRIDOR
- NEW OR IMPROVED HIGHWAY
- EXISTING TRANSIT
- EXISTING HIGHWAY





## **GO TO 2040 CAPITAL PROJECTS**

# **5 Highlights**

- 1 Elgin O'Hare Expressway and West O'Hare Bypass**
- 2 I-294/I-57 Interchange**
- 3 West Loop Transportation Center**
- 4 Central Lake County Corridor**
- 5 CTA Red Line Extension South**



## **GO TO 2040 CAPITAL PROJECTS**

# **5 Highlights**

- 1 Elgin O'Hare Expressway and West O'Hare Bypass**
- 2 I-294/I-57 Interchange**
- 3 West Loop Transportation Center**
- 4 Central Lake County Corridor**
- 5 CTA Red Line Extension South**



## **GO TO 2040 CAPITAL PROJECTS**

# **5 Highlights**

- 1 Elgin O'Hare Expressway and West O'Hare Bypass**
- 2 I-294/I-57 Interchange**
- 3 West Loop Transportation Center**
- 4 Central Lake County Corridor**
- 5 CTA Red Line Extension South**



## **GO TO 2040 CAPITAL PROJECTS**

# **5 Highlights**

- 1 **Elgin O'Hare Expressway  
and West O'Hare Bypass**
- 2 **I-294/I-57 Interchange**
- 3 **West Loop  
Transportation Center**
- 4 **Central Lake County Corridor**
- 5 **CTA Red Line Extension South**



## **GO TO 2040 CAPITAL PROJECTS**

# **5 Highlights**

- 1 Elgin O'Hare Expressway and West O'Hare Bypass**
- 2 I-294/I-57 Interchange**
- 3 West Loop Transportation Center**
- 4 Central Lake County Corridor**
- 5 CTA Red Line Extension South**



## **GO TO 2040 CAPITAL PROJECTS**

**Over 50 priority projects are recommended. For details, see [cmap.illinois.gov/2040/projects](http://cmap.illinois.gov/2040/projects)**



# Local Technical Assistance (LTA) Program

Funded through federal Partnership for Sustainable Communities, joint DOT-HUD-EPA program







# **Local Technical Assistance (LTA) Program**

## **Evaluation criteria include:**

- Alignment with GO TO 2040**
- Local need for assistance**
- Feasibility and ability to implement**
- Collaboration with other groups, including neighboring governments and nongovernmental groups**
- Input from Counties, COGs, and City of Chicago**
- Geographic balance**



# CMAP GO TO 2040

