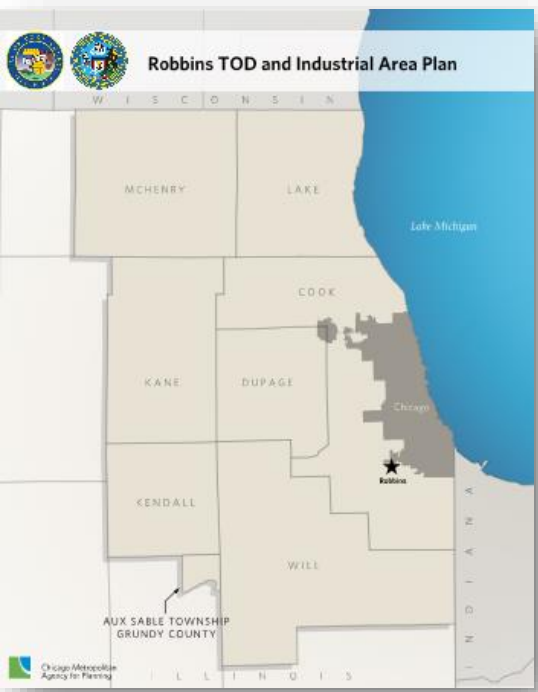




TOD and Industrial Plan





History

- Incorporated 1917
- One of the first African-American municipalities incorporated for African-Americans migrating from the South
- Built without traditional planning layout.
 - Many streets were unpaved
 - Rural look and feel
- First African-American owned airport

Inclusive Growth

- Pop. 5200
- 95% African-American
- Median Age = 39
- Median Income = \$24,000
- Increasing Latino population

Geography

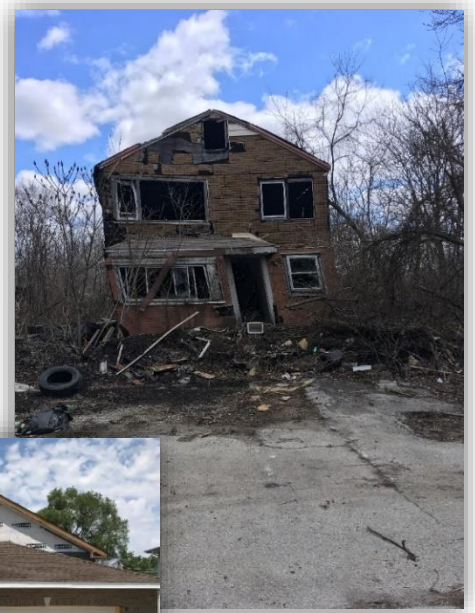
- Near I-57 and I-294
- Robbins Metra Station
- Cal-Sag Channel
 - Potential for Cal-Sag Trail





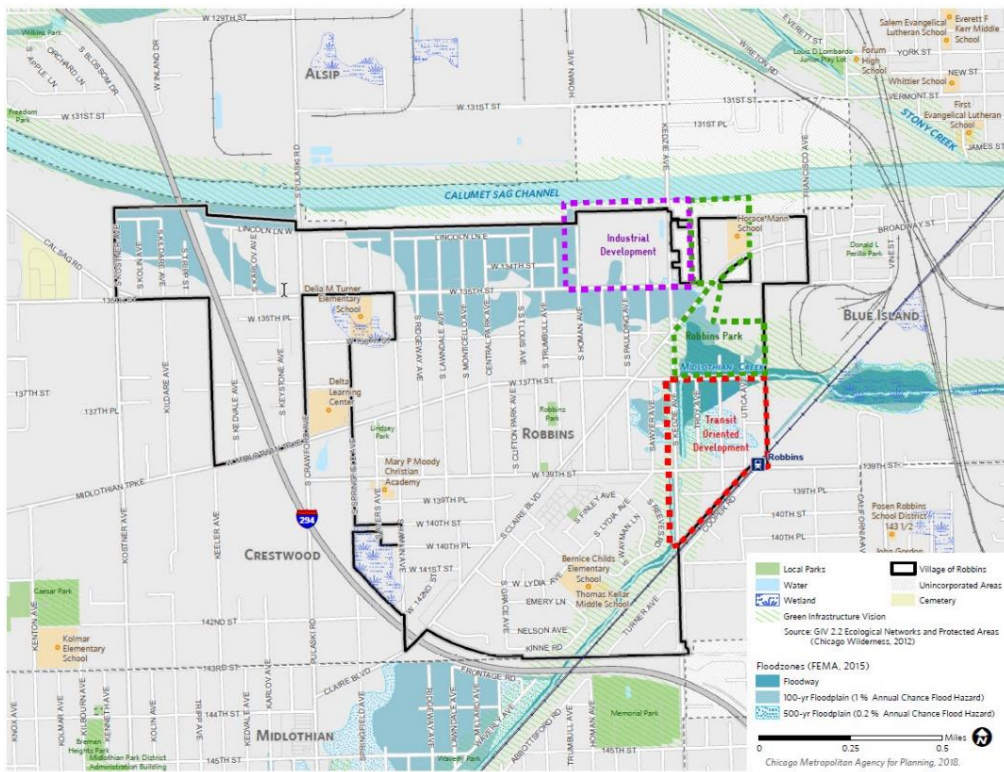
Neighborhood Character

- Vacant lots
- Dilapidated and dangerous housing
- Limited retail options
- Flooding (20% of Village floods during storm events)
- Brownfields and environmental remediation
- Infrastructure needs (sidewalks, utilities)
- Golden Arches subdivision
 - Built in 1960s
 - Nicer homes and new construction
- Blue Island
 - Encompasses more of the TOD than Robbins
 - High concentration of scrap metal uses



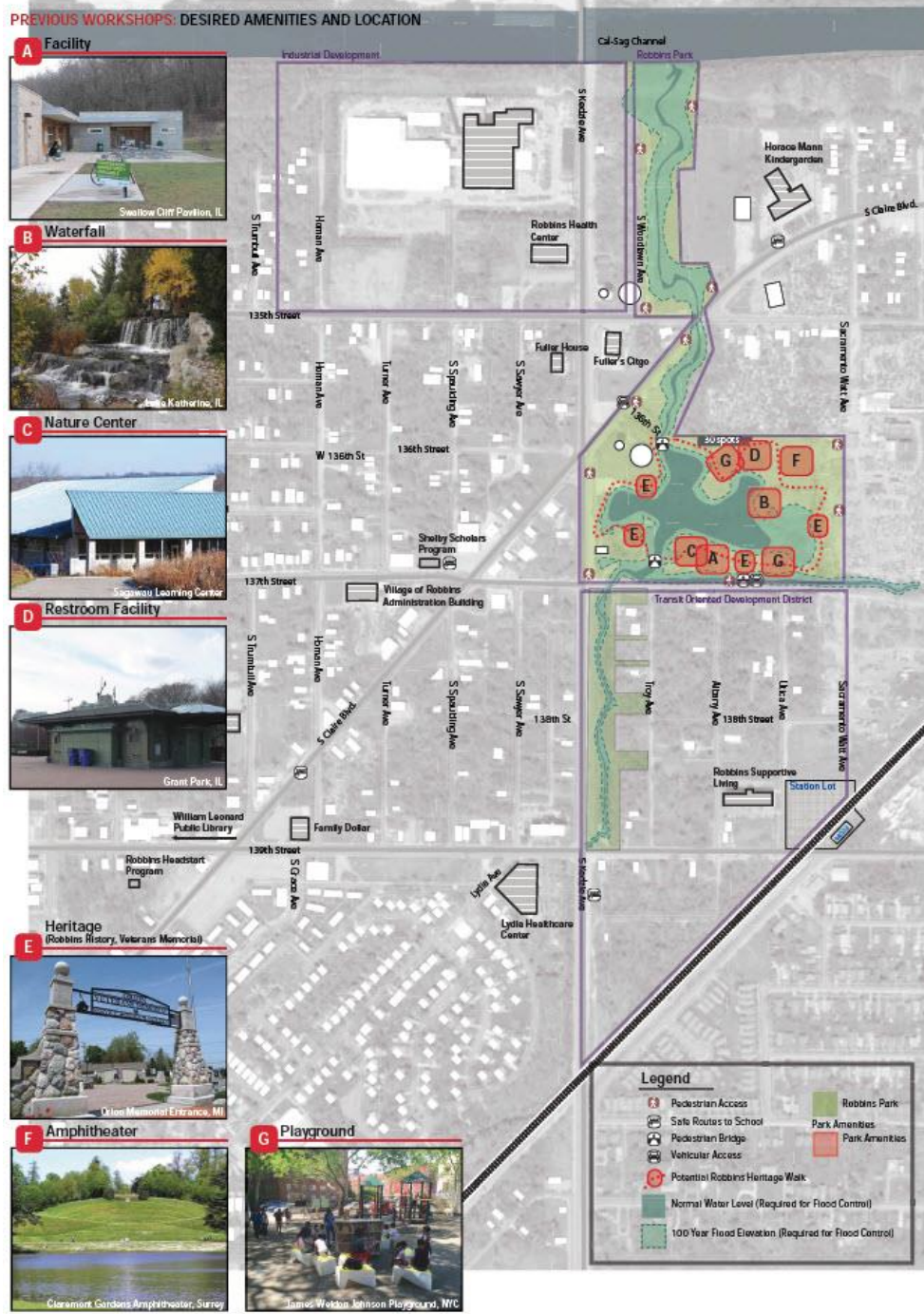


Robbins Park Concept and Flooding Mitigation



Opportunities

- Concentration of shops and housing around Metra station
- Attractive corridor leading to Robbins Park
- Improved transit access
- Activate Kedzie & Claire St. as commercial corridors
- Clean industrial use that provides jobs and skills training (i.e. solar energy, manufacturing incubator)





TOD area

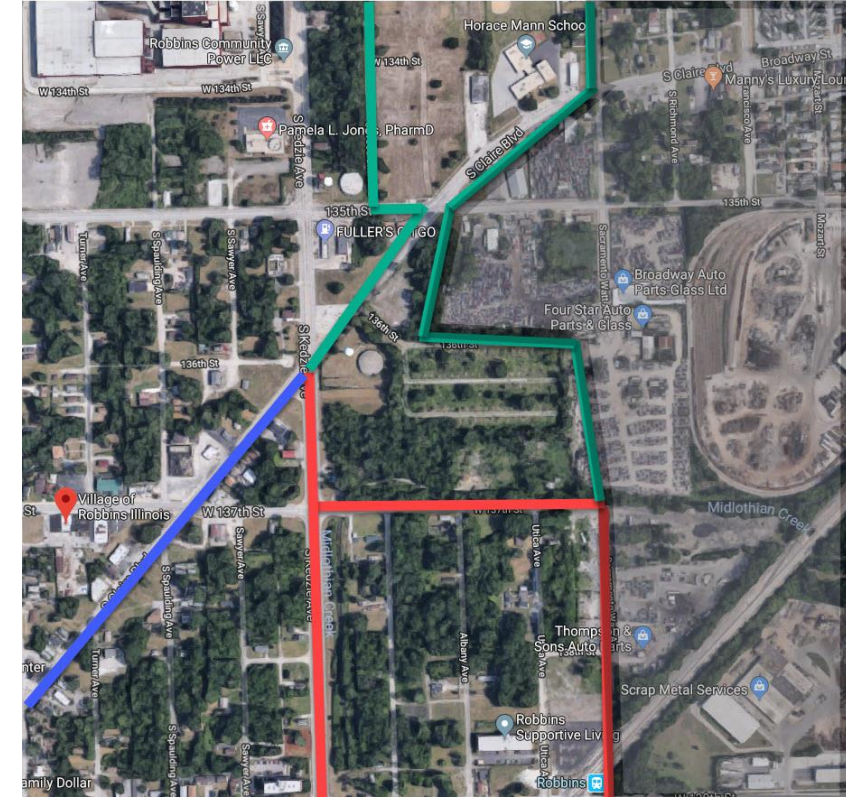
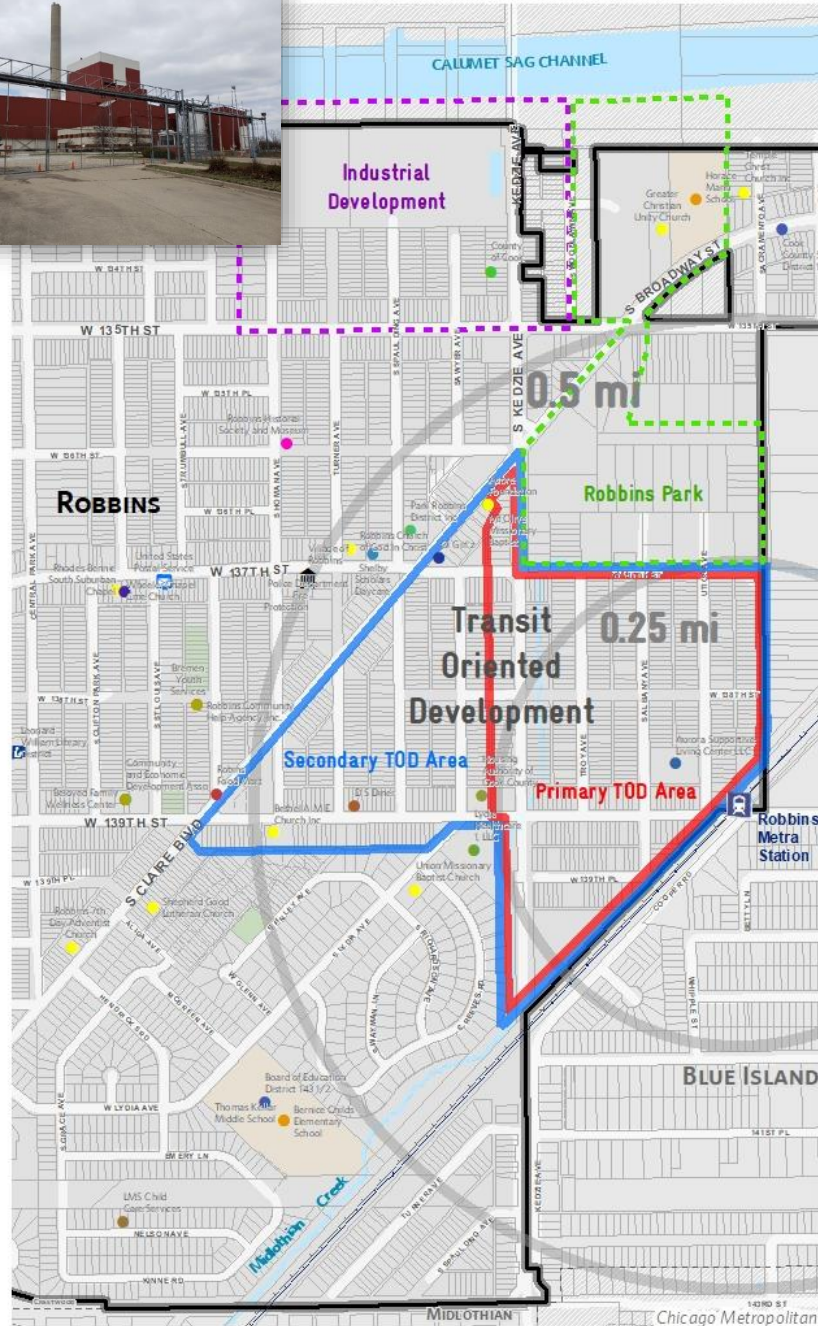
- Rebuilt Metra Station and parking lot in 2007
- Potential for housing and economic development around Metra

Industrial area

- Site was waste-to-energy Resource Recovery Facility in 1997
 - Closed in 2000
- Anaerobic Digestion proposal
- Solar Power Plant proposal

Additional needs

- Infrastructure consideration
- Municipal Capacity





Scope and Timeline



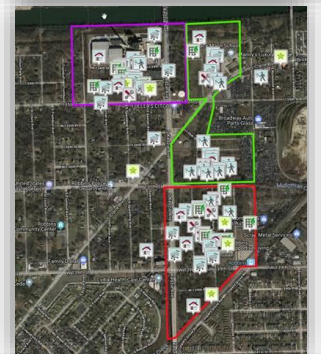
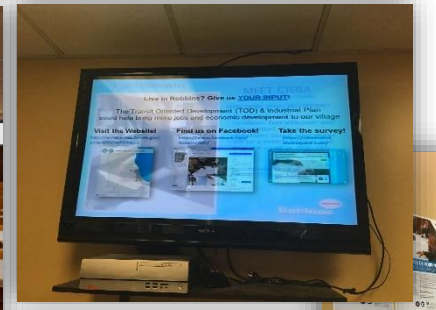
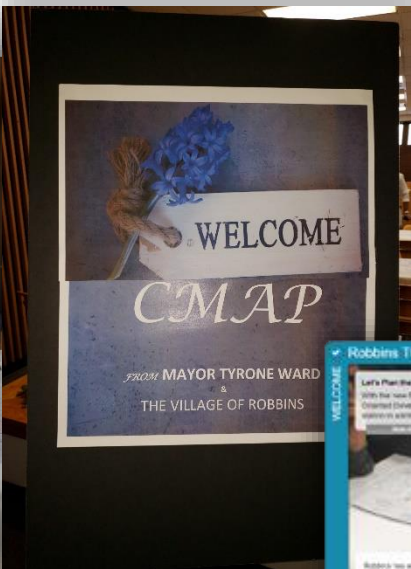
- Perform Market Analysis for Potential TOD
 - RTA consultant-led
 - 3 month completion schedule from August
- Industrial market analysis (CMAP)
- Produce Existing Conditions Report (ECR) (Fall/Winter 2018)
- Key Recommendations Memo (Winter 2018)
- Draft Plan (Spring/Summer 2019)
- Current activities
 - Reviewing previous plans
 - Drafting ECR
 - Conducting Outreach





Outreach

- Kick Off meeting - April 16th
- Methods
 - Website
 - Facebook
 - MetroQuest
 - Postcards (also Spanish)
 - Cable access channel
 - Flea Market & Festivals
- Steering Committee formed
 - TOD subcommittee planned
- Key-person interviews underway





Partners, Legislators and Press

- RTA (Joseph Moriarty)
- Village of Robbins (Mayor Tyrone Ward and Village Administrator Keith Freeman)
- MWRD (Rich Fisher)
- Metra (Allison Buchwach)
- Pace (Tom Radak)
- CNT (Rebecca Raines)
- UIC (Moira Zellner & Justin Keller)
- United Way (Jaime Atreaga and Maya Hardy)
- National Park Service (Diane Banta)

City of Blue Island

- Jason Berry (Former)
- Mark Miller, Project Coordinator

Legislators

- Mayor, Village of Robbins, Tyrone Ward
- Congressional District, 1st, Bobby Rush
- IL Senate District, 14th, Emil Jones III

Press

- Joint press release issued 2/22/18 with MWRD, RTA and Village of Robbins

