

# Aging in Community Toolkit

**Human and Community Development Committee**  
May 12, 2014



Chicago Metropolitan  
Agency for Planning

# Impetus for Toolkit

- Response from municipal survey
- National and regional trends and GO TO 2040 projections:
  - The number of residents in the region who are between 65 and 84 years of age is projected to double by 2040
  - The number of residents in the region who are over 85 years old is projected to triple by 2040
- Age-friendly planning is good planning



## **CMAP:**

- Manage project
- Develop toolkit
- Coordinate pilot project through LTA Program

## **Human and Community Development Committee:**

- Serve as toolkit Steering Committee
- Provide guidance and feedback at key points
- Review outline and toolkit drafts



## **Phase 1: Project Initiation** *(April-May 2014)*

Phase 2: Create a Document Outline

Phase 3: Draft the Toolkit

Phase 4: Apply the Toolkit

## **Tasks**

*Establish a Steering Committee*

*Steering Committee Kick-Off Meeting*



Phase 1: Project Initiation

**Phase 2: Create a Document Outline**  
*(June-September 2014)*

Phase 3: Draft the Toolkit

Phase 4: Apply the Toolkit

## Tasks

*Review background information*

*Draft a detailed outline*

*Steering Committee Meeting*



Phase 1: Project Initiation

Phase 2: Create a Document Outline

**Phase 3: Draft the Toolkit**  
*(October 2014-April 2015)*

Phase 4: Apply the Toolkit

## Tasks

*Draft the toolkit*

*Update Committees*

*Finalize the toolkit*



Phase 1: Project Initiation

Phase 2: Create a Document Outline

Phase 3: Draft the Toolkit

**Phase 4: Apply the Toolkit**

*(May 2015-?)*

## **Tasks**

*Encourage LTA application*

*Coordinate LTA project*



# Key Toolkit Elements

- Offer an introduction to aging in community issues, as well as step-by-step guidance on how to address these issues
- Gear toolkit towards municipal staff and the municipal plans, policies, and processes that can serve as tools for building age-friendly communities
- Take a broad approach to aging in community, with a focus on land use, housing, and transportation planning
- Build off of existing resources, plans, and projects/initiatives, particularly at the regional level



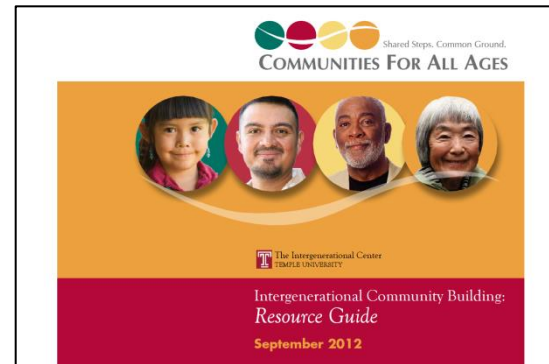
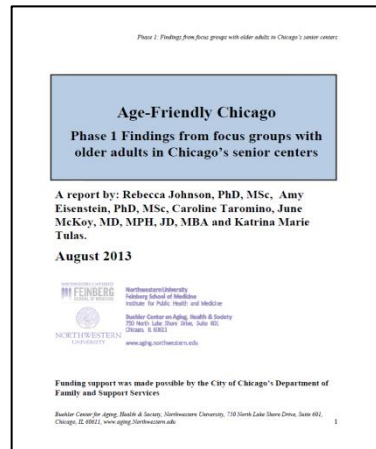
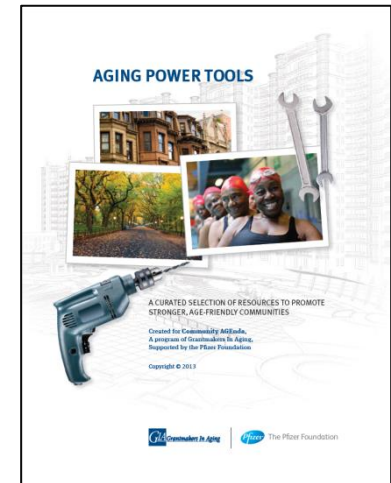
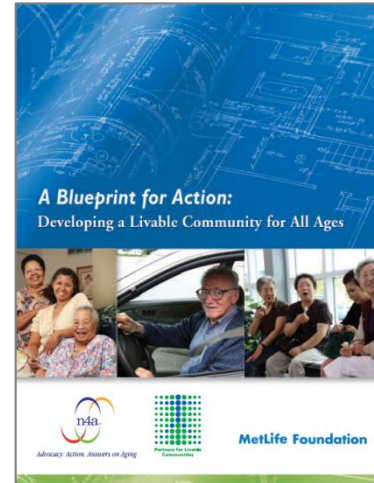
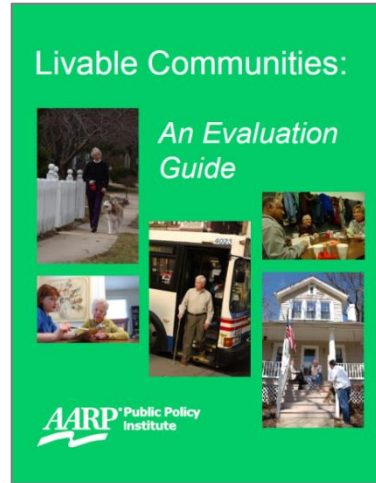
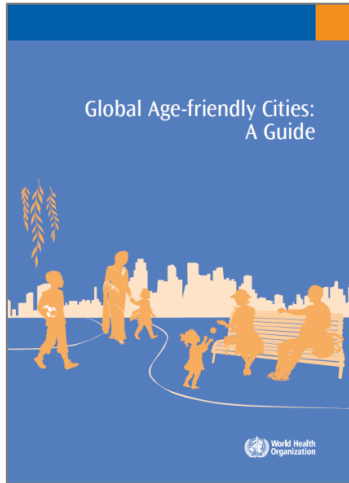


## Recommendations from Norridge and Westchester Comprehensive Plans:

- Partner with existing senior groups
- Permit and incentivize multifamily and senior housing development
- Incorporate universal design principles in building codes
- Support and promote energy efficiency retrofits
- Explore the creation of a home-sharing program
- Explore the creation of an Elder Village model
- Coordinate with Pace to improve senior mobility options
- Safe Routes for Seniors program
- Promote Proviso Township Handyman services
- Foster a spirit of volunteerism in the community



# Examples of International, National, and Regional Resources



Chicago Metropolitan  
Agency for Planning

## 1. Introduction

- a) National and regional demographic trends
- b) International, national, and regional entities addressing aging in community issues, and their resources for evaluation and improvement
  - World Health Organization, AARP, Partners for Livable Communities, Communities for All Ages, n4a, Northeastern Illinois Agency on Aging, AgeOptions, etc.
- c) Overview of key municipal plans, ordinances, and processes in which to incorporate aging in community policies and strategies and the above resources



## 2) Overview: Addressing aging in community at the municipal level

### a) Assess

- Demographic data analysis
- Convene stakeholders and obtain feedback

### b) Develop implementation actions and policies/strategies

### c) Incorporate into comprehensive plan and other municipal planning documents

### d) Implement

### e) Evaluate and Re-Assess



## **3) Policies and strategies for aging in community**

- a) Land Use and Zoning
- b) Housing
- c) Transportation and Circulation
- d) Workforce and Economic Development
- e) Community Facilities and Services
- f) Public Participation

## **4) Conclusion and Appendices**



Thank you!

**Questions? Comments?**

**Thank you!**

**Evy Zwiebach**

Project Manager

[ezwiebach@cmap.illinois.gov](mailto:ezwiebach@cmap.illinois.gov)

(312) 386-8637



Chicago Metropolitan  
Agency for Planning