

**The 606 (Bloomingdale) Trail  
Overview and Update**

**CMAP Bike-Ped. Task Force**

**By: Luis D. Benitez**

---

---

---

---

---

---

---

---

---

---


LOGAN SQUARE OPEN SPACE PLAN

### 4. Create a Greenway on the Bloomingdale Rail Line

The raised Bloomingdale rail corridor, owned by Canadian Pacific Railway and unused for several years, presents an opportunity for the creation of an elevated linear park that includes a trail and passive areas. In addition to providing a new transportation route that could connect to existing bike lanes to the north, south and east, the greenway would afford recreational opportunities and improved aesthetics for area residents. Access points, approximately every six to nine blocks, along with a passive river edge on its eastern end, would provide additional opportunities for greenspace creation.

POTENTIAL NEW OPEN SPACE—12.4 ACRES

Existing Conditions



Uninterrupted separation from cars      Big Bluestem thriving      Great Views

---

---

---

---

---

---


---

---


---

---

### Project Overview:



- The Bloomingdale Trail will be 2.7 miles long stretching from Ashland west to Ridgeway.
- The trail is a mixed-use path for bicycling and pedestrians. And consists of 10 foot wide multiuse path, with two 2 foot wide pedestrian shoulders.
- The trail is located along Bloomingdale Avenue where the elevated Bloomingdale Rail Line was constructed in 1914.
- The project include rehabilitations to 37 bridges (35 minor and 2 have major) + 1 new bridge at Walsh Park
- Access to and from the trail will be around every 1/2 mile via ramps either within the parks or running parallel to Bloomingdale Avenue.
- Access path locations will include streets difficult to cross including California, Western, Milwaukee, Damen, and Ashland.
- Project also includes: New trail lighting, New underpass lighting, Roadway resurfacing on Bloomingdale Avenue, ADA / sidewalk improvements, Drainage improvements, and many other site amenities – bike racks, benches, water fountains, etc.




---

---

---

---

---

---

---

---

---

---

Overview - ADAPTIVE REUSE

Industrial Infrastructure → Public Amenity

The diagram illustrates the concept of adaptive reuse. On the left, a circular image shows a perspective view of industrial tracks or infrastructure. An arrow points to the right, where another circular image shows a vibrant public amenity space with people walking and trees. The CDOT logo is located in the bottom left corner.

---

---

---

---

---

---

---

---

Honor and Enhance the Site's Unique Attributes

CDOT CHICAGO DEPARTMENT OF TRANSPORTATION

This slide features a large architectural rendering of an industrial site being repurposed. Below the main image are several smaller diagrams and icons representing different design options for the site's reuse, including various types of greenery and structures. The CDOT logo is in the bottom left.

---

---

---

---

---

---

---

---

Increase Experiential Range and Ecological Diversity

CDOT CHICAGO DEPARTMENT OF TRANSPORTATION

This slide shows a rendering of a green public space with people walking and cycling. Below the rendering are several diagrams and icons illustrating different design options for the space, such as various types of trees and landscaping. The CDOT logo is in the bottom left.

---

---

---

---

---

---

---

---



---

---

---

---

---

---

---

---



---

---

---

---

---

---

---

---



---

---

---

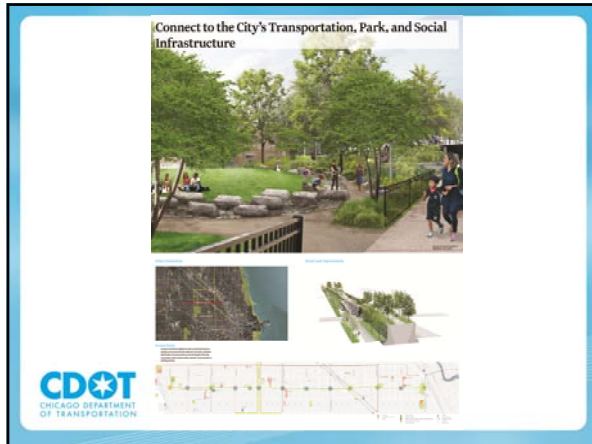
---

---

---

---

---



---

---

---

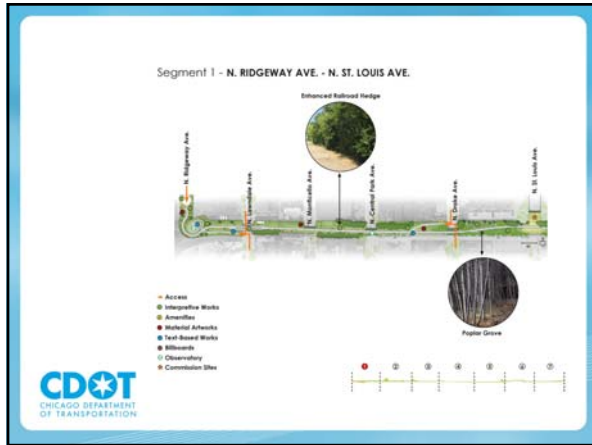
---

---

---

---

---



---

---

---

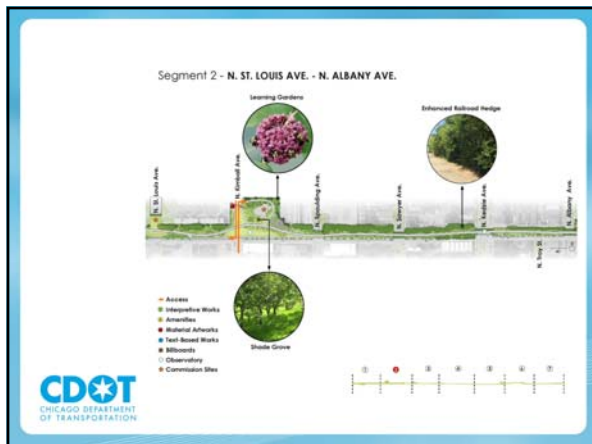
---

---

---

---

---



---

---

---

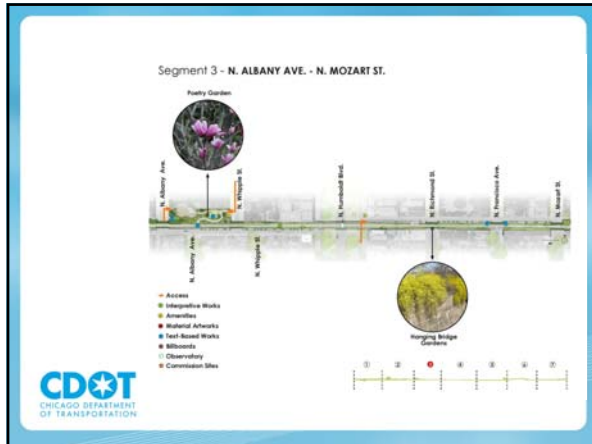
---

---

---

---

---



---

---

---

---

---

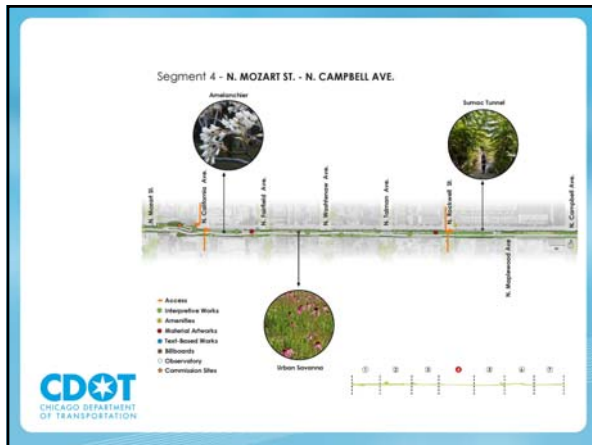
---

---

---

---

---



---

---

---

---

---

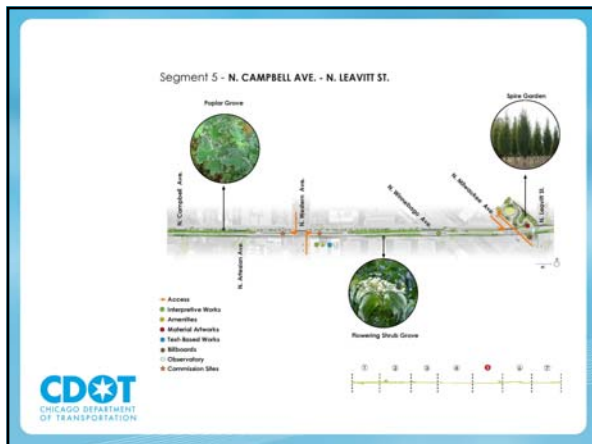
---

---

---

---

---



---

---

---

---

---

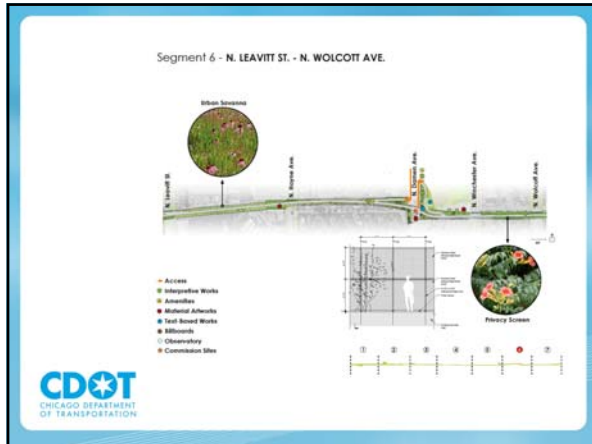
---

---

---

---

---



---

---

---

---

---

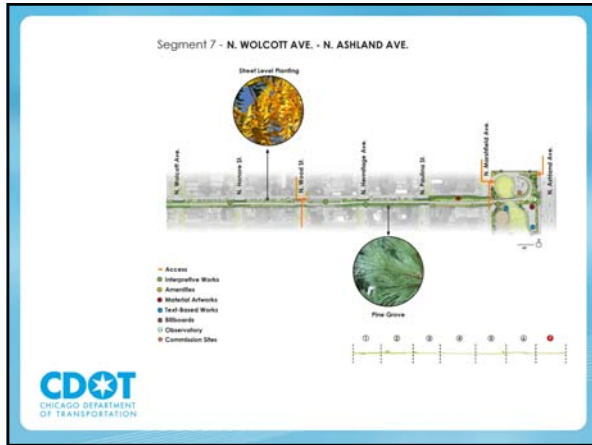
---

---

---

---

---



---

---

---

---

---

---

---

---

---

---



---

---

---

---

---

---

---

---

---

---



---

---

---

---

---

---

---

---



---

---

---

---

---

---

---

---



---

---

---

---

---

---

---

---

Proposed Humboldt Boulevard lookout at trail level



---

---

---

---

---

---

---

---

---

---

Existing view at Western Avenue



---

---

---

---

---

---

---

---

---

---

Proposed view at Western Avenue



---

---

---

---

---

---

---

---

---

---



Existing Milwaukee and Leavitt view



---

---

---

---

---

---

---

---

Proposed new Milwaukee/Leavitt bridge



---

---

---

---

---

---

---

---

Progress Photographs



---

---

---

---

---

---

---

---

Excavated Trail



---

---

---

---

---

---

---

---

Backfilled portion of trail with new parapet curb



---

---

---

---

---

---

---

---

Western Avenue Viaduct demolition



---

---

---

---

---

---

---

---

Ashland Avenue Bridge move to Western



---

---

---

---

---

---

---

---

Thank You



---

---

---

---

---

---

---

---