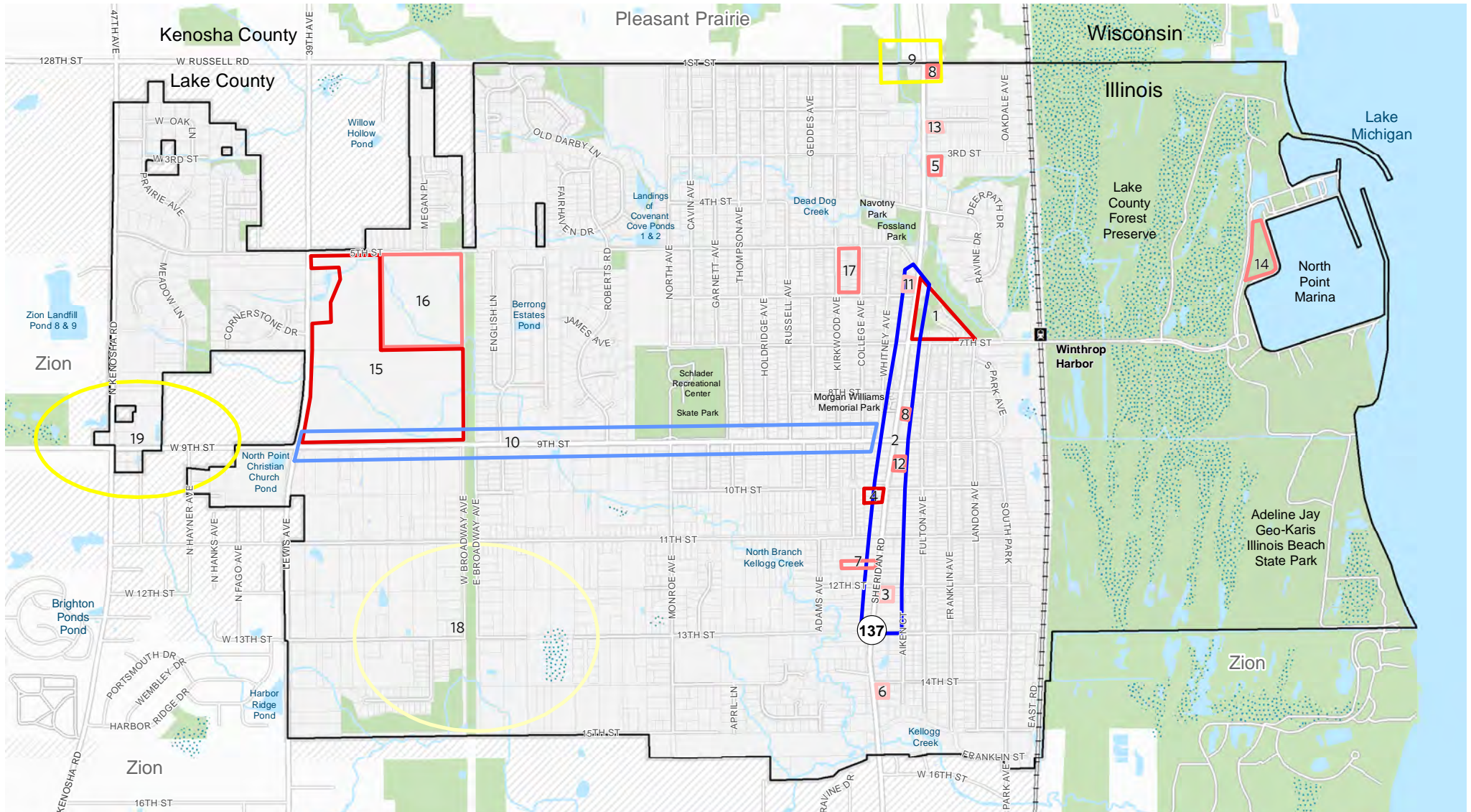


Figure 1.1 Public Input Results - Land Use



**Public Participation Results**

**Comments' Location & Frequency**

- Site, High
- Site, Medium
- Site, Low
- Area, Medium
- Area, Low
- Corridor, High
- Corridor, Medium

- 1 - Commercial development prioritization needed Proposed mix use with residential and a hotel
- 2 - Commercial corridor regulated by commercial zoning found in the triangle Streetscape improvements needed
- 3 - Improve store
- 4 - Improvement/new hotel proposed
- 5 - Motel condition concerns
- 6 - Popular fishermen accommodation
- 7 - Proposed change of use
- 8 - No residential developments along commercial corridor
- 9 - Commercial and gateway signage improvements
- 10 - Proposed restriction, no commercial uses allowed
- 11 - Improvements needed
- 12 - Proposed change of use
- 13 - Business in good condition
- 14 - Proposed hotel and restaurant
- 15 - Proposed detached single family with some townhomes
- 16 - Proposed public open space with restrooms serving the trail
- 17 - Proposed senior housing
- 18 - Proposed public park, library, other amenity or senior housing, townhomes on the vacant parcels in the area
- 19 - Proposed directional signage leading drivers getting off I 94 to Winthrop Harbor and North Point

- Winthrop Harbor Boundary
- Other Municipalities
- Unincorporated Areas
- Open Space
- Water
- Swamp/Marsh

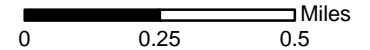
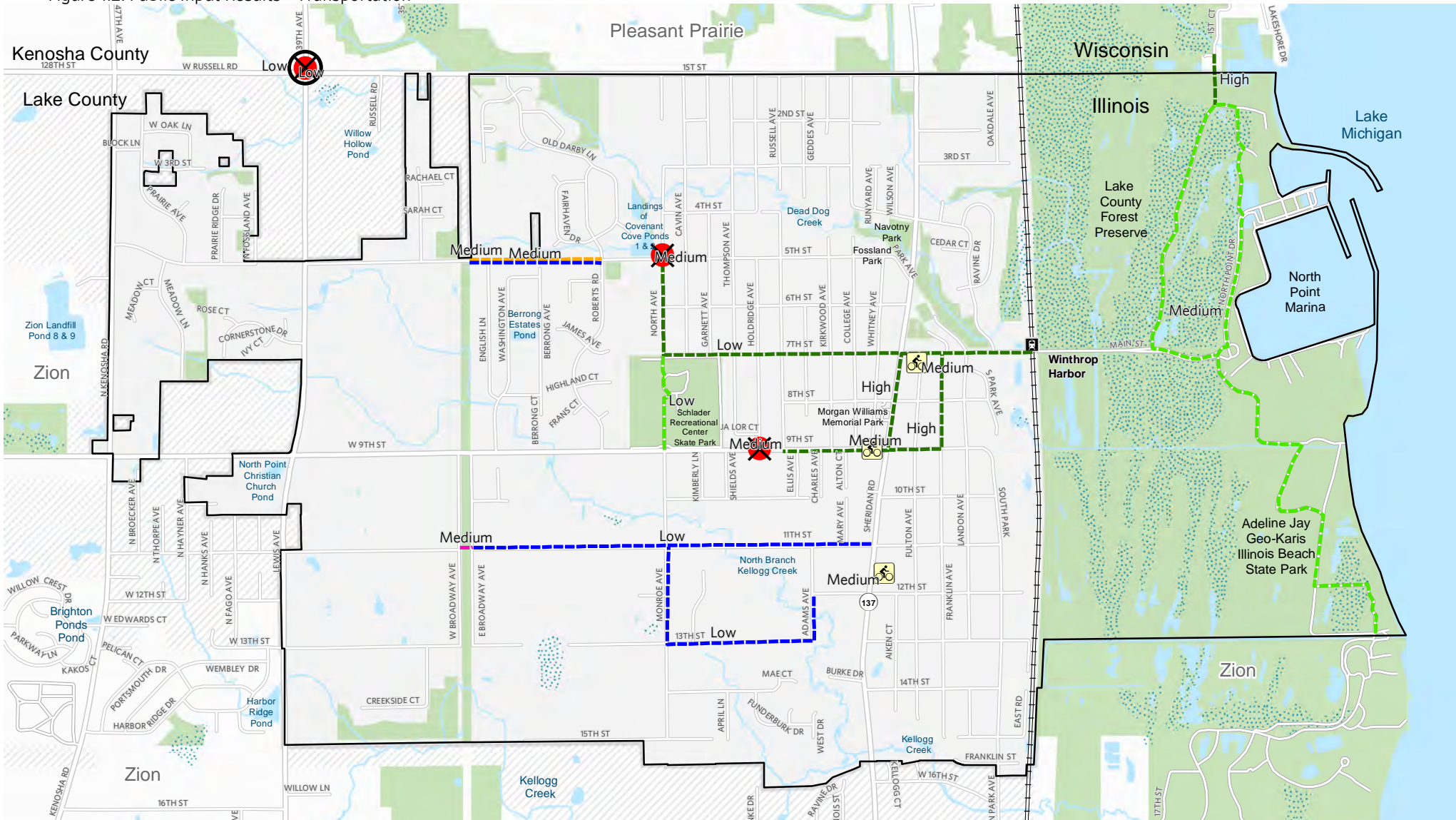


Figure 1.2. Public Input Results - Transportation



**Public Participation Results**

- Proposed new sidewalk
- Proposed new connection
- Existing bike route improvement
- Proposed new bike route
- Proposed new street

- Add bicycle parking
  - High priority safety improvement
  - Proposed roundabout
- Comments Frequency**
- High
  - Medium
  - Low

**\*Other Recommendations:**

- Better sidewalks and bike accommodation along Sheridan Rd Corridor (High)
- Pace Bus Service to/from shopping destinations (Medium)
- Subdivision code revision requiring housing developers to install sidewalks (Medium)
- More bike route signs in State Park and Forest Preserve areas (Medium)

- Winthrop Harbor Boundary
- Other Municipalities
- Unincorporated Areas
- Open Space
- Water
- Swamp/Marsh

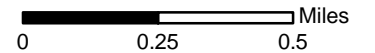
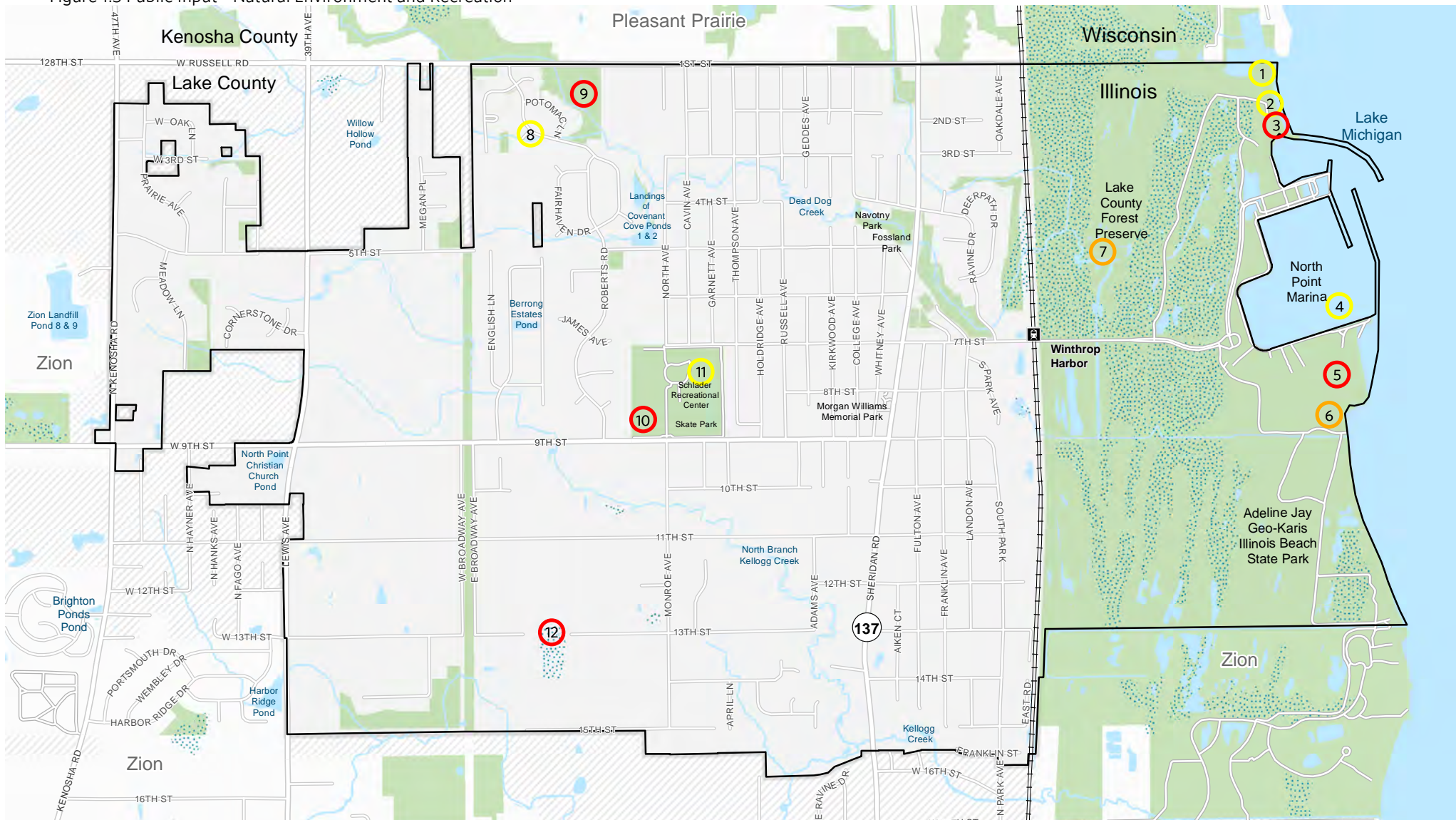


Figure 1.3 Public Input - Natural Environment and Recreation



**Public Participation Results**

**Comments' Location & Frequency**

- High
- Low
- Medium

1 - Find alternative to reduce/eliminate seagulls to encourage human beach use.  
 2 - Design and visual access to beach is poor. Add landscape screening to guide citizens directly to the beach.  
 3 - Add better and larger signage to guide citizens to the beach.

4 - Inadequate parking for human access.  
 5 - 13 acres of land can be used to create public beach. Increase concession stands, birding platform, beach house, bathrooms, water park.  
 6 - Need breakwalls to reduce erosion.

7 - Add raised decks and walkways.  
 8 - Add a dog park at this location. Move existing dog park from marina to this site.  
 9 - Create a park at this location to connect to a future bike path.

10 - Park needs equipment updates. Play equipment use is heavy and there is extensive wear and tear.  
 11 - Expand/build onto existing park. Add a sandbox, toddler area and more picnic areas.  
 12 - Create library/civic park here.

**\*Other Recommendations:**

- Add larger signage to attract visitors (High)
- Stop police harassment of residents entering the marina (High)
- Better advertising to the public about marina and marina events (Medium)

**Legend**

- Winthrop Harbor Boundary
- Other Municipalities
- Unincorporated Areas
- Open Space
- Water
- Swamp/Marsh

**Scale:** 0 0.25 0.5 Miles