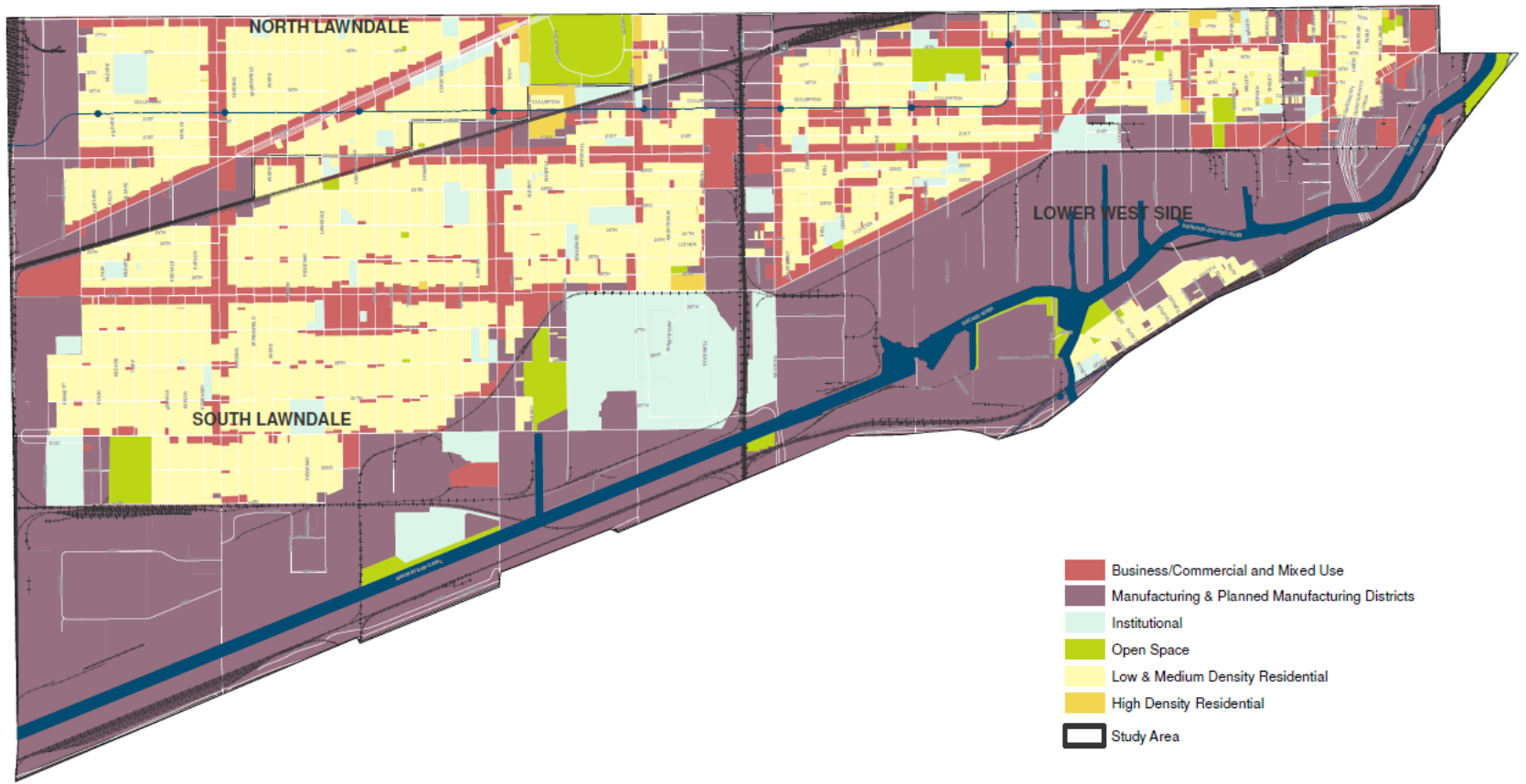


LITTLE VILLAGE LAND USE STRATEGY



Open Space and Industrial Areas Community Workshop Agenda

- **5:30 – 6:00: Open House**
- **6:00 – 6:30: Presentation**
- **6:30 – 7:00: Questions and Comments**
- **7:00 – 8:00: Small Group Discussions**

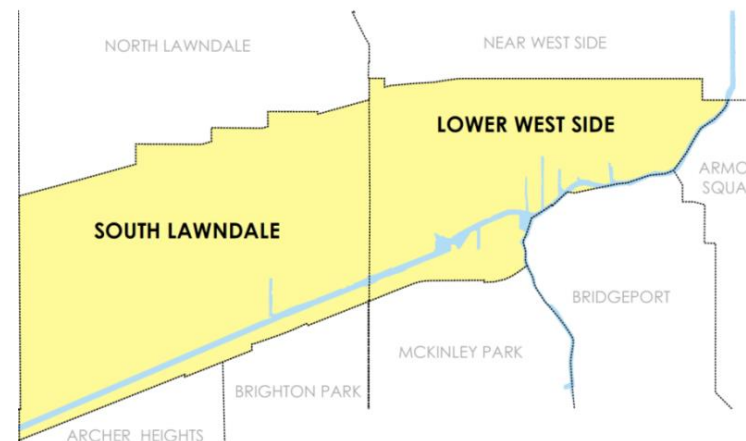
Planning Process Overview

Project Partners:

- City of Chicago Department of Planning and Development (DPD) is leading the project
- CMAP is providing planning support through the LTA program
- CMAP has contracted with Pilsen Neighbors Community Council (PNCC) and Enlace Chicago to provide community outreach and engagement assistance

Other partners / related projects:

- Adler School of Professional Psychology's Health Impact Assessment project
- Delta Institute and LVEJO's Little Village Brownfield Revitalization project
- CDOT Little Village Paseo Feasibility Study



Department of Planning and Development

Bureau of Zoning and Land Use

Sustainability/Open Space

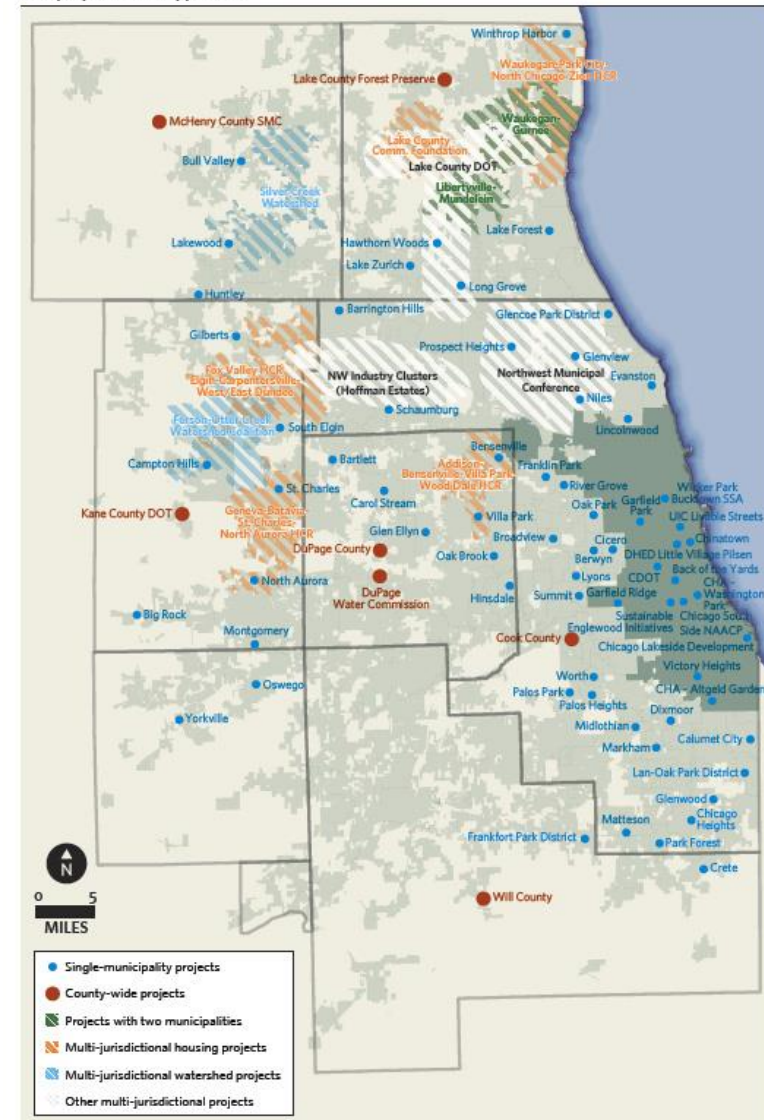
Kathy Dickhut Michael Berkshire

Brad Roback

Chicago Metropolitan Agency for Planning (CMAP)

- Regional Planning Agency created in 2005 by Illinois General Assembly in order to integrate planning for transportation and land use
- Created **GO TO 2040**, a comprehensive, long-range plan for the Chicago Metropolitan area, which was adopted in 2010
- Local Technical Assistance program implements **GO TO 2040** through direct assistance to communities

LTA proposals and applicants



Note: This map does not include region-wide projects

City of Chicago Land Use Strategies

- Green Healthy Neighborhood Land Use Plan for Englewood, West Englewood, Washington Park, and Woodlawn
- Recommended strategies for housing, retail, productive landscapes, manufacturing, open space, green infrastructure, historic preservation
- Plan was adopted by the Chicago Plan Commission in March 2014



A Land Use Strategy

- Describes where you live, work, play, shop and learn
- Identifies future places to live, work, play, shop and learn
- Confirms the places and the community character to preserve and improve
- Guide for a 10-20 year period

Building upon goals in Quality of Life Plans



Little Village QUALITY-OF-LIFE PLAN

Family • Culture • Community

Vision

As we plan our future in Little Village, we value our **family, culture and community**.
Our vision is a community that is educated, peaceful, united, clean, and prosperous.

Quality-of-Life Plan Summary

The community engagement process created a plan with eight topic areas, each with specific goals.



A. Arts & Culture

- A.1 Support and encourage collaboration among local artists
- A.2 Strengthen community events and programs focused on arts and culture
- A.3 Create and expand temporary and long-term spaces for arts and culture



B. Economic Development

- B.1 Increase resources for entrepreneurs
- B.2 Support branding and beautification efforts
- B.3 Increase workforce development programs and job opportunities



C. Education

- C.1 Strengthen and expand early childhood opportunities
- C.2 Support children in elementary and middle school
- C.3 Support youth in high school, in college and in their career goals
- C.4 Enhance Adult Education



D. Green Space & Recreation

- D.1 Maintain, support, and enhance existing green and recreational spaces
- D.2 Develop new recreational spaces
- D.3 Increase community impact through improved programming



E. Health

- E.1 Improve access to quality healthcare for the entire community
- E.2 Strengthen preventive health measures for residents
- E.3 Reduce chronic illnesses



F. Housing

- F.1 Increase sustainable home ownership and reduce foreclosures
- F.2 Increase the affordability and quality of rental housing
- F.3 Develop new housing options for a diverse range of incomes



G. Immigration

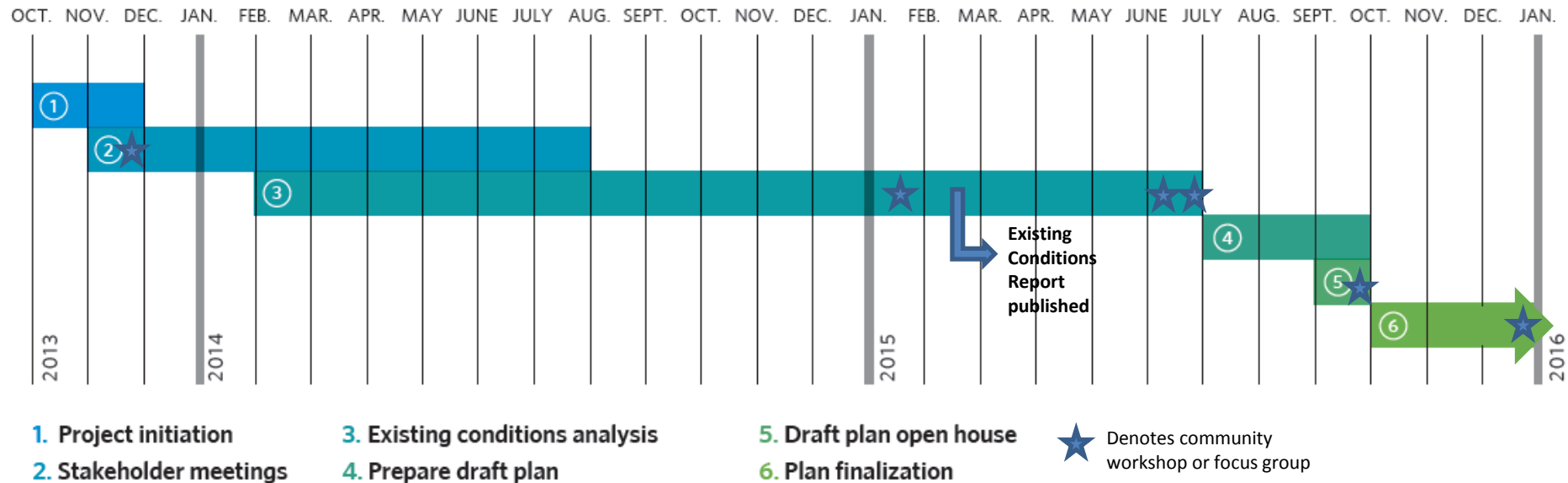
- G.1 Promote leadership development around immigration issues
- G.2 Strengthen the capacity of existing service providers and encourage partnerships to attract additional resources
- G.3 Provide accurate and timely immigration information to the community



H. Safety

- H.1 Continue to develop violence prevention programs for youth and families
- H.2 Enhance and broaden educational opportunities for youth
- H.3 Increase community engagement and leadership around safety issues
- H.4 Strengthen the community and police relationship
- H.5 Create a safer and cleaner physical environment

Planning Process Overview



Since the start of the planning process, the project team has:

- Held a community workshop on open space attended by 65 residents and stakeholders
- Met with 15 stakeholders, community groups, and/or local networks reaching approximately 120 people
- Held a focus group on opportunities and challenges in the community's industrial areas
- Published a comprehensive existing conditions analysis

Summary of June 18th Meeting

- Attended by approximately 30 residents and stakeholders
- Three discussion topics:
 - Preserving community character
 - Infill and density
 - Enhancing the community's retail environment and small business support

Summary of June 18th Meeting

Highlights of Community Character Discussion:

- There is interest in the possibility of a “Conservation District” for Little Village, but more information and outreach is needed.
- Tools beyond historic preservation are necessary for addressing affordability.
- Desire to explore possibilities for building rehabilitation / maintenance programs.
- Concern that the community’s attractive character will eventually lead to higher cost of living in the area and displacement. How can this be avoided?
- Little Village residents are the most important aspect of community character.

Summary of June 18th Meeting

Highlights of Infill and Density Discussion:

- Appreciation of, and desire to preserve, the walking culture in the community.
- Any new development needs to adequately address key community concerns: affordability, school capacity, open space, neighborhood architecture and Mexican heritage.
- Desire for more amenities for young adults – such as quality housing, recreation, shopping – without pricing residents out.
- Desire to learn more about potential City policies for addressing affordability challenges for both owners and renters.

Summary of June 18th Meeting

Highlights of retail and small business discussion:

- Desire for greater variety in retail offerings: more variety in restaurants, stores that cater to both young people and older adults, stores that are more affordable.
- Support for pedestrian street designations and protecting the walkability of 26th street.
- Desire for more retail near the pink line stops.

Summary of June 18th Meeting

Next steps:

- Gather and review all input (facilitator notes, comment sheets, annotated maps, etc.) from June 18th and today's meeting.
- Collect additional data on key topics and meet with relevant City agencies and departments (such as the Housing Bureau, Department of Buildings, etc.).
- Schedule follow-up public engagement activities to continue discussion of topics such as:
 - Housing and affordability, policies for City-owned lots, historic preservation, density, small business support.
- Potential outreach and engagement activities could include:
 - Community group round-tables, community workshops, stakeholder meetings, property owner discussions, open houses.

Tonight's Discussion Topics

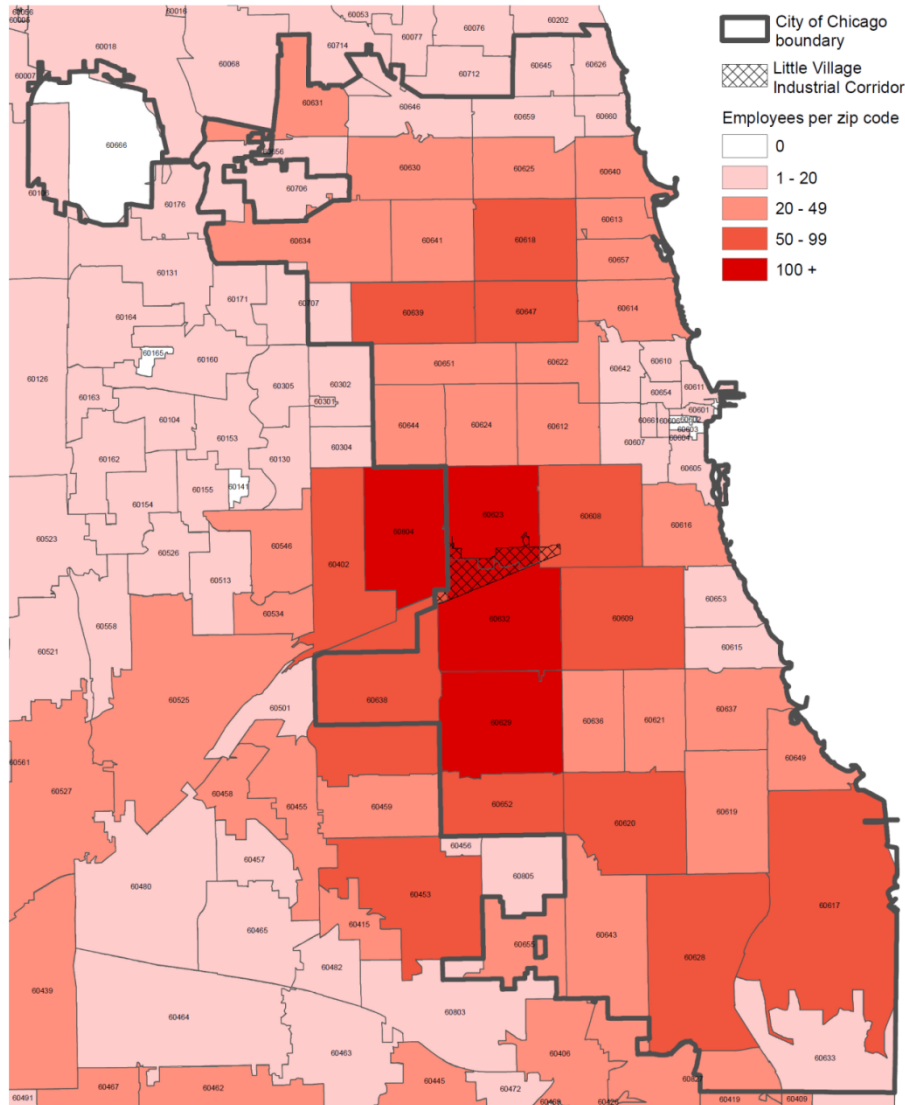
Discussion topics:

- Manufacturing and the industrial corridor
- Open space and neighborhood routes

Manufacturing

Manufacturing – Where workers live

Where workers live that are employed in the Little Village Industrial Corridor - by zip code (ZCTA)



Little Village Industrial Corridor				
Jobs	Real & Virtual Products			
	Manufacturing	Moving, storing goods & materials; Waste management; Construction	Information, Technology & Management	
Existing	1,851	2,991	67	90%
	38%	61%	1%	

Total jobs in Corridor = 5,436

Manufacturing – employment sectors

EMPLOYMENT OF CCA RESIDENTS, 2011

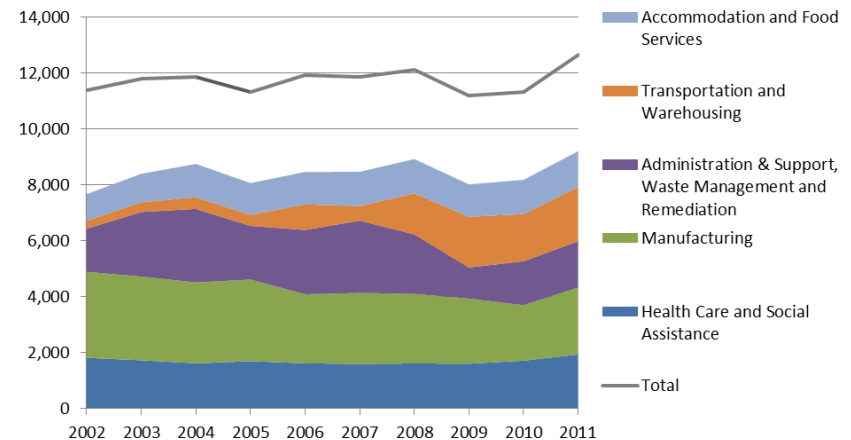
<i>By Industry Sector</i>	Count	Percent
Manufacturing	2,904	19.3
Administration	1,892	12.5
Health Care	1,545	10.2
Retail Trade	1,536	10.2
Accommodation and Food Service	1,469	9.7

EMPLOYMENT IN THE CCA, 2011

<i>By Industry Sector</i>	Count	Percent
Manufacturing	2,313	19.1
Health Care	2,132	17.6
Transportation	1,885	15.6
Administration	1,453	12.0
Accommodation and Food	1,121	9.3

- 19% of Little Village residents work in manufacturing, more than in any other industry.
- 19% of Little Village jobs are in the manufacturing sector.
- 18% of Little Village jobs are in Health Care and 16% are in Transportation and Warehousing, but fewer residents are employed in these sectors.

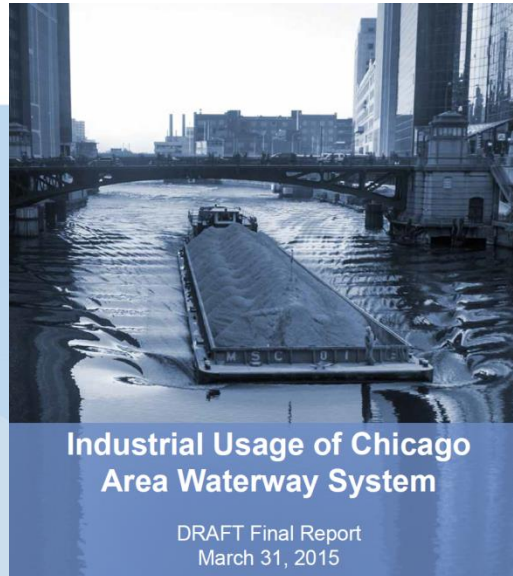
Little Village Key Industries Annual Change in Employment, 2002-2011



- Transportation and Warehousing is the community's fastest growing industry.

Manufacturing – barge use

Chicago Waterway Map



Units to Carry
1,750 Short Tons of Dry Cargo



1 barge



16 rail cars



70 trucks

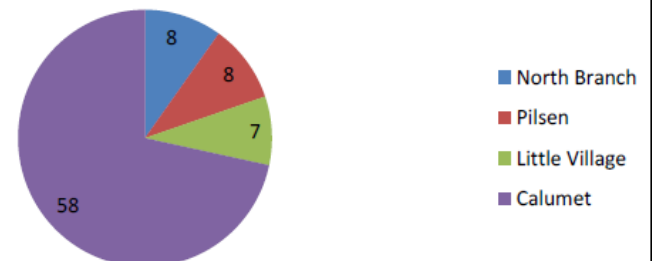
Manufacturing – barge use

Waterways - Total Tonnage (000s of tons)

<u>Segment</u>	<u>2003</u>	<u>2012</u>	<u>Change %</u>
Chicago River, Main and North Branch	1,828	792	-56.7%
Chicago River, South Branch	3,946	1,267	-67.9%
Lake Calumet	963	808	-16.1%
Calumet Harbor and River	11,213	11,968	6.7%
Calumet Sag Channel (On City boundary and outside City)	6,576	5,461	-17.0%
Sanitary and Ship Canal (Only a small portion within City)	19,465	11,915	-38.8%

Source: USACE Waterborne Commerce of the United States

U.S. Army Corps of Engineers Barge Facilities by Industrial Corridor



Manufacturing – barge use

Critical services such as concrete and construction materials and recycling

Little Village Industrial Corridor



North Branch Industrial Corridor



Manufacturing – barge use

Barge usage is crucial for industries on the South Branch of the Chicago River, especially construction.

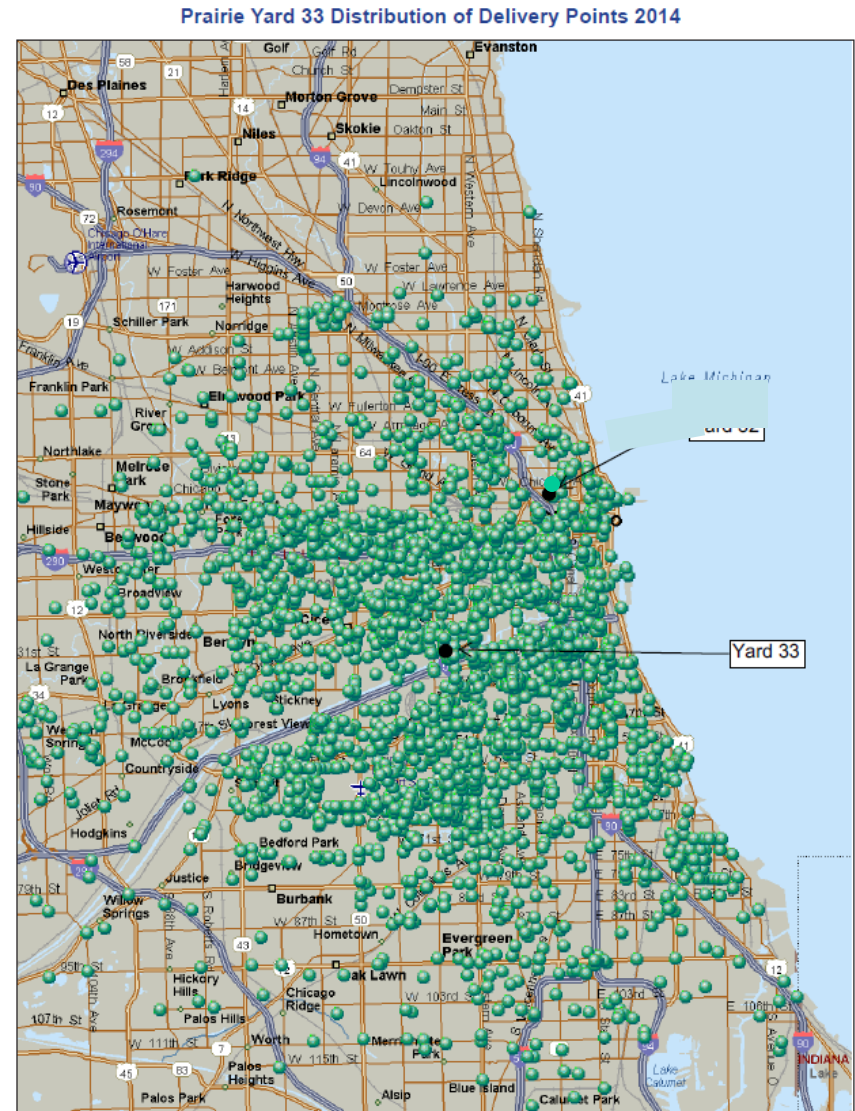


Figure 9. Prairie Yard 33 Distribution of Delivery Points 2014

Manufacturing – Crawford

Fisk-Crawford Task Force Recommendations

- Minimize pollution and waste, emphasize sustainability
- Not suitable for residential development
- Create quality, living wage jobs for residents
- Sites may need to be parceled for multiple owners
- Not intended as new park sites, however, where feasible provide public access to the river
- Community prefers clean, advanced light manufacturing, and not large scale retail uses

Manufacturing – Truck route

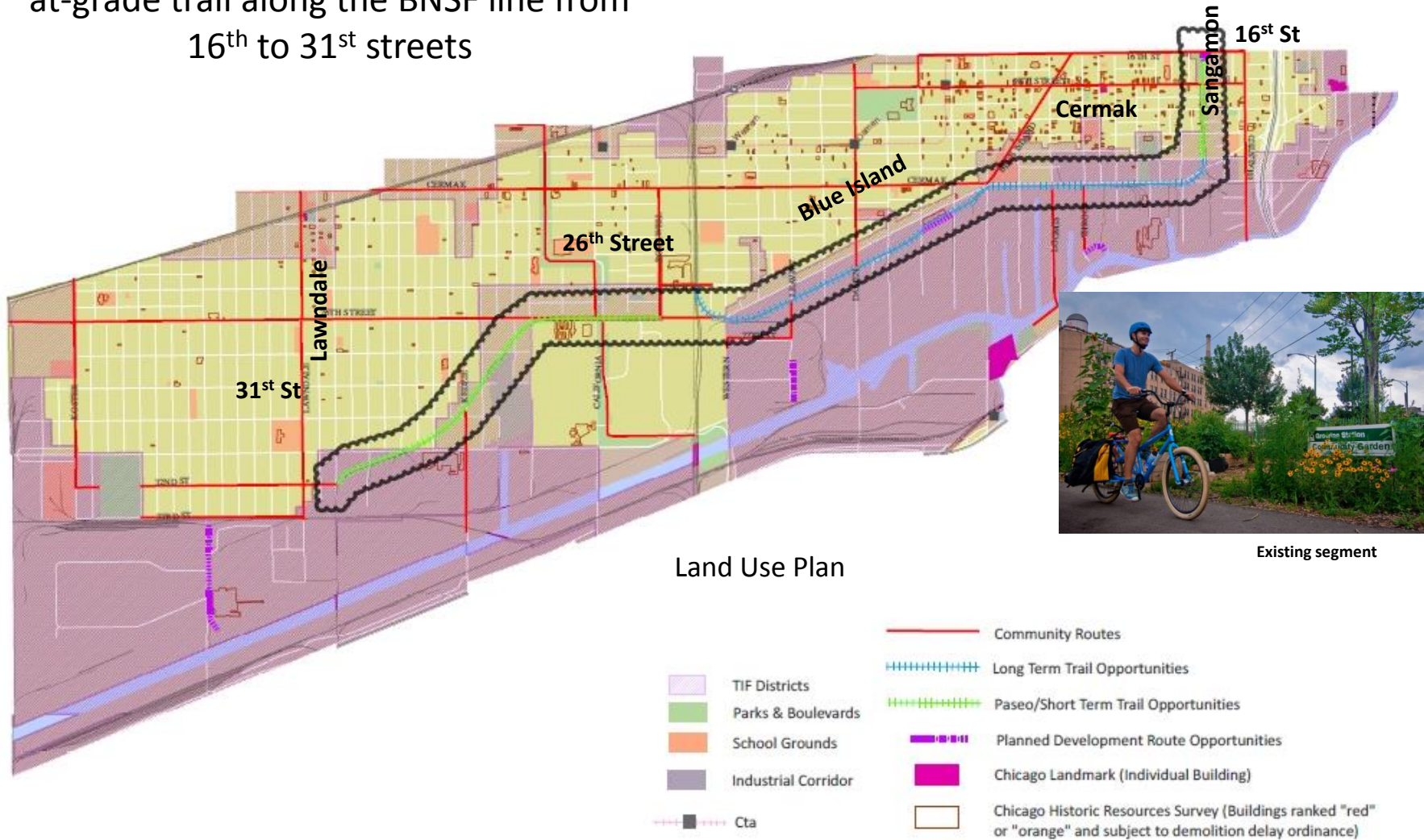
Opportunity to look at a new industrial street from Kedzie to Pulaski, south of 33rd & the rail line



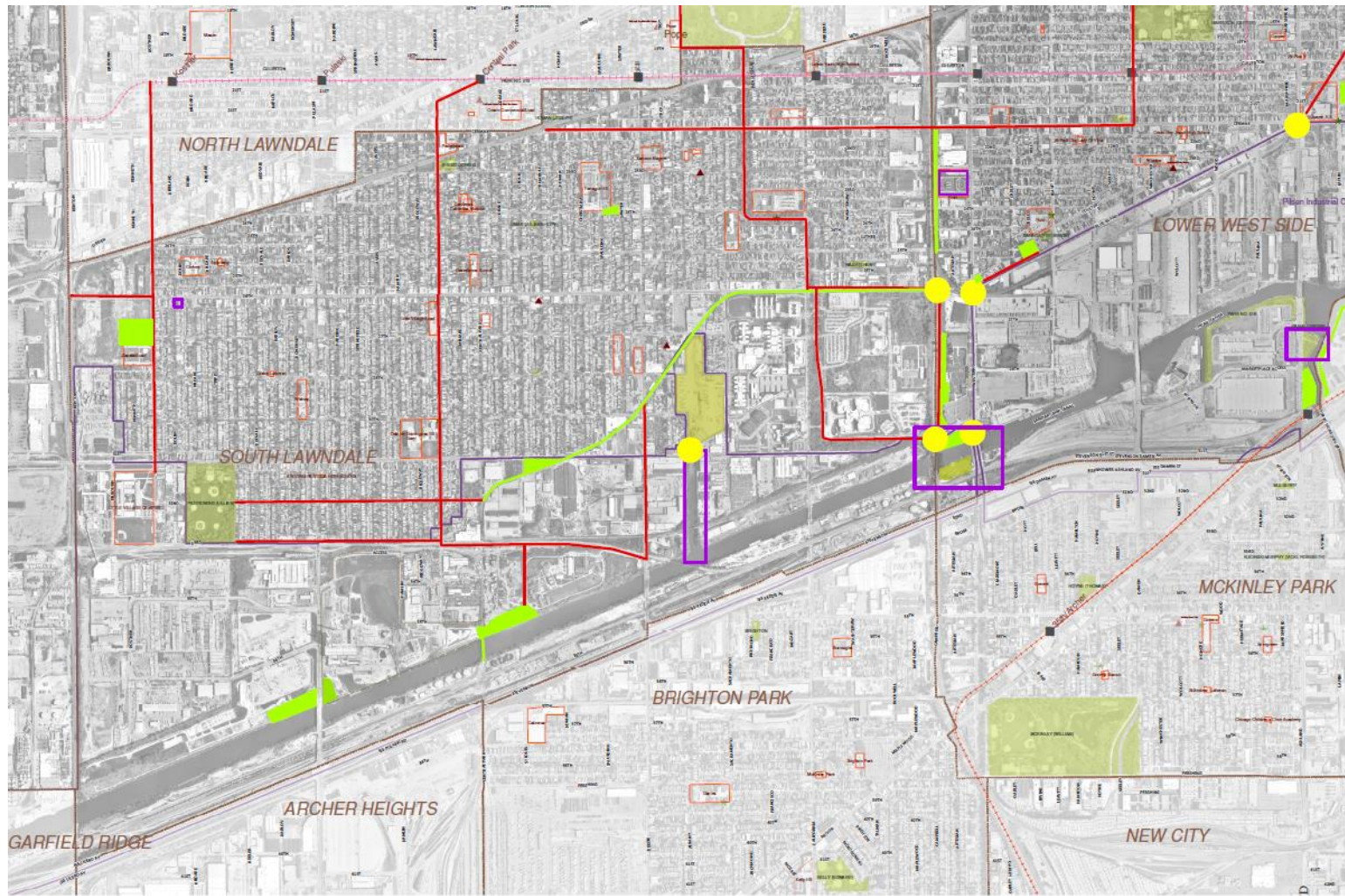
Neighborhood routes and open spaces

Neighborhood routes and open spaces

Investigate the feasibility of a four-mile, at-grade trail along the BNSF line from 16th to 31st streets



Public Input from November 2013 Workshop in Little Village



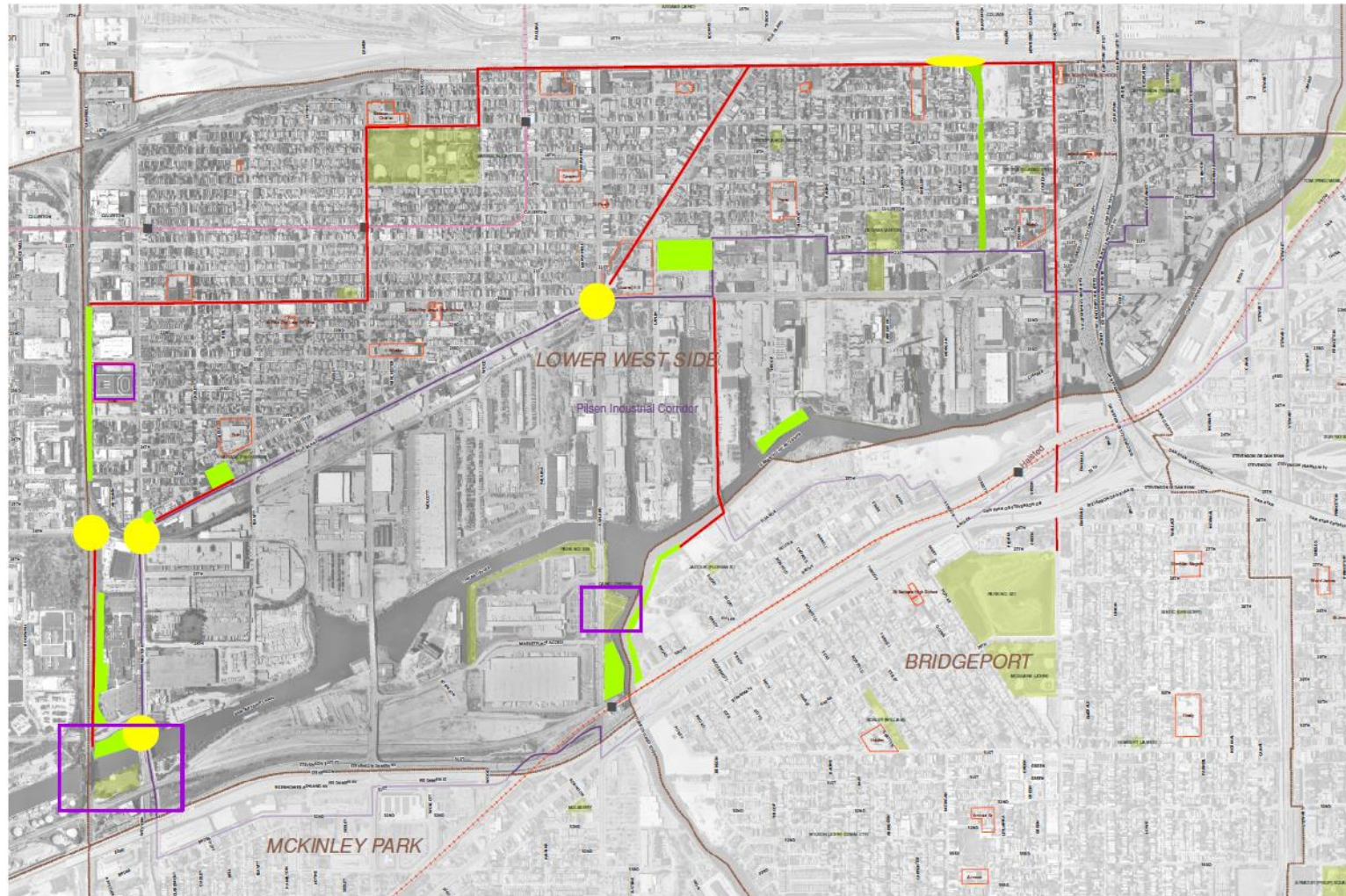
Little Village Community Feedback - Open Space -

- School Grounds
- Parks
- Industrial Corridors
- Community Areas
- ★ School Gardens (Openlands)
- ▲ Community Gardens (NeighborSpace)

Types of Projects to Investigate:

- Open Space
- Streets for Potential Bike/Ped Enhancements
- Ped/Bike Connector
- Enhance Usability

Public Input from November 2013 Workshop in Pilsen



Pilsen Community Feedback
- Open Space -

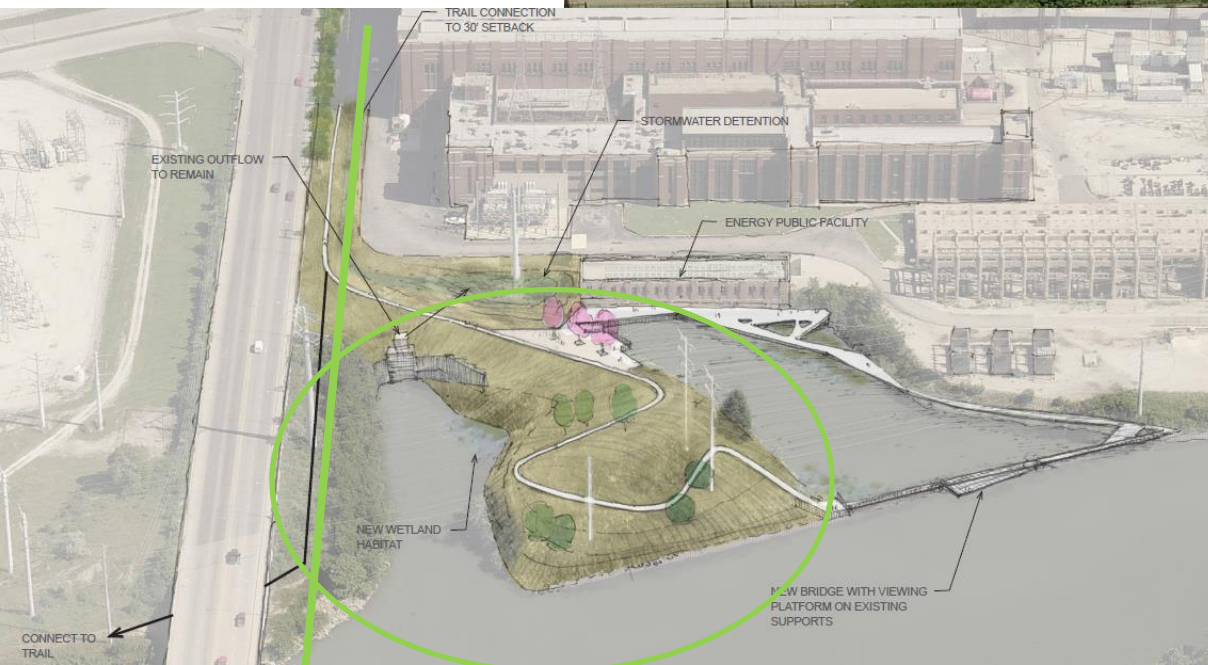
- School Grounds
- Parks
- Industrial Corridors
- Community Areas
- School Gardens (Openlands)
- Community Gardens (NeighborSpace)

Types of Projects
to Investigate:

- Open Space
- Streets for Potential Bike/Ped Enhancements
- Ped/Bike Connector
- Enhance Usability

Neighborhood routes and open spaces

Consider public open space at Pulaski and the river as part of new development



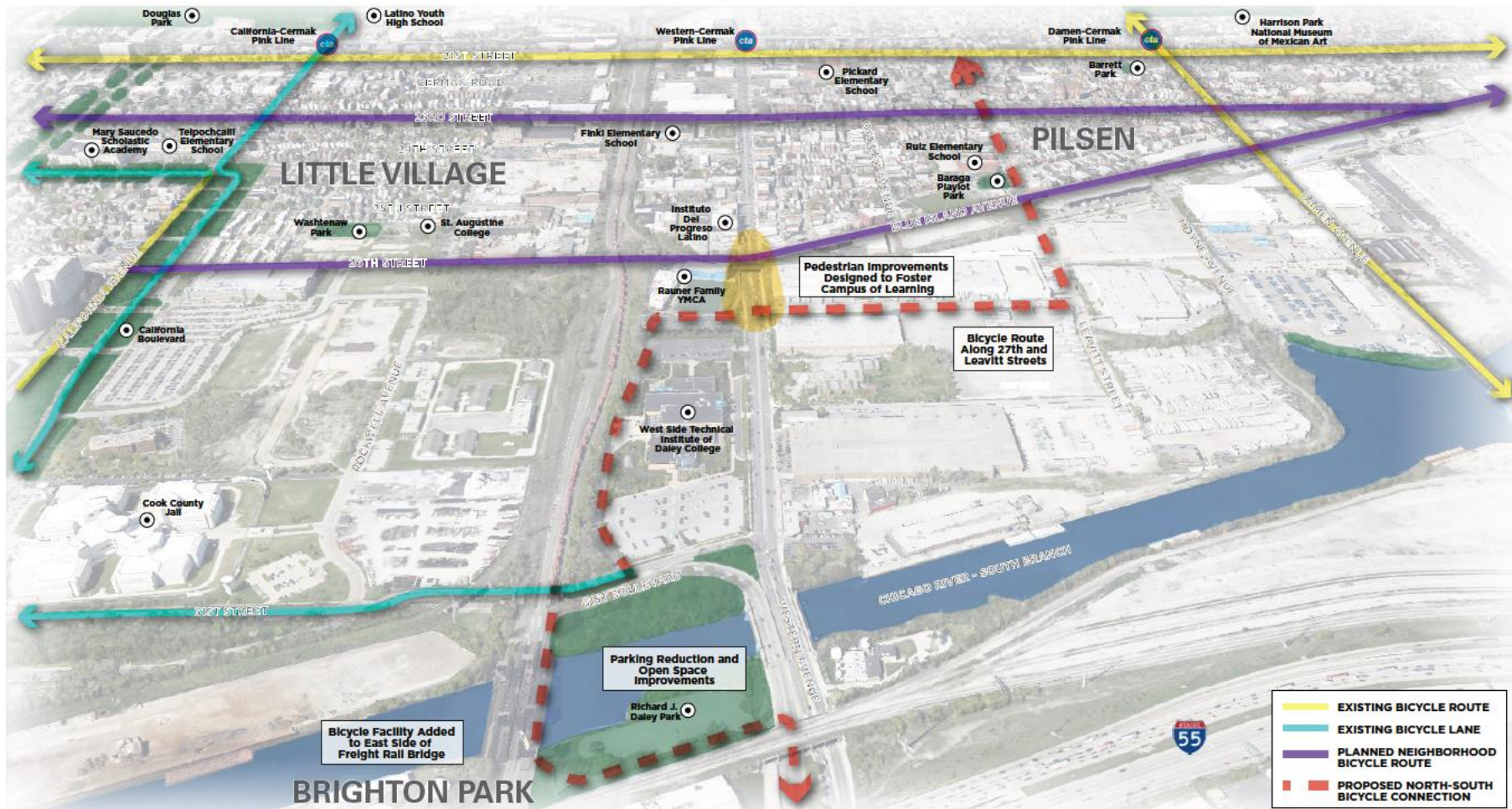
Neighborhood routes and open spaces

Consider 30 foot setback along east side of Pulaski at Crawford site for trail and stormwater swale



Neighborhood routes and open spaces

Connect the education and recreation campuses along Western via an internal trail



Neighborhood routes and open spaces

Improve access to the public space, and the public space, at the river and Western Avenue



RICHARD J DALEY PARK IMPROVEMENTS

VIEW LOOKING NORTHWEST | OCTOBER 2014

Neighborhood routes and open spaces

Long term planning issue

At and above Western Avenue



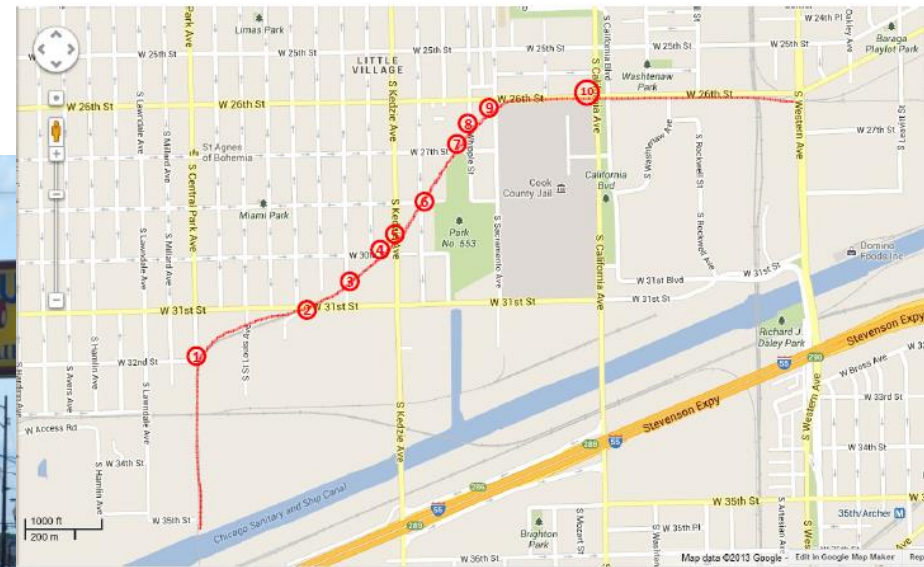
Neighborhood routes and open spaces

Short term planning issue

BNSF Paseo



BNSF Paseo Street Crossings

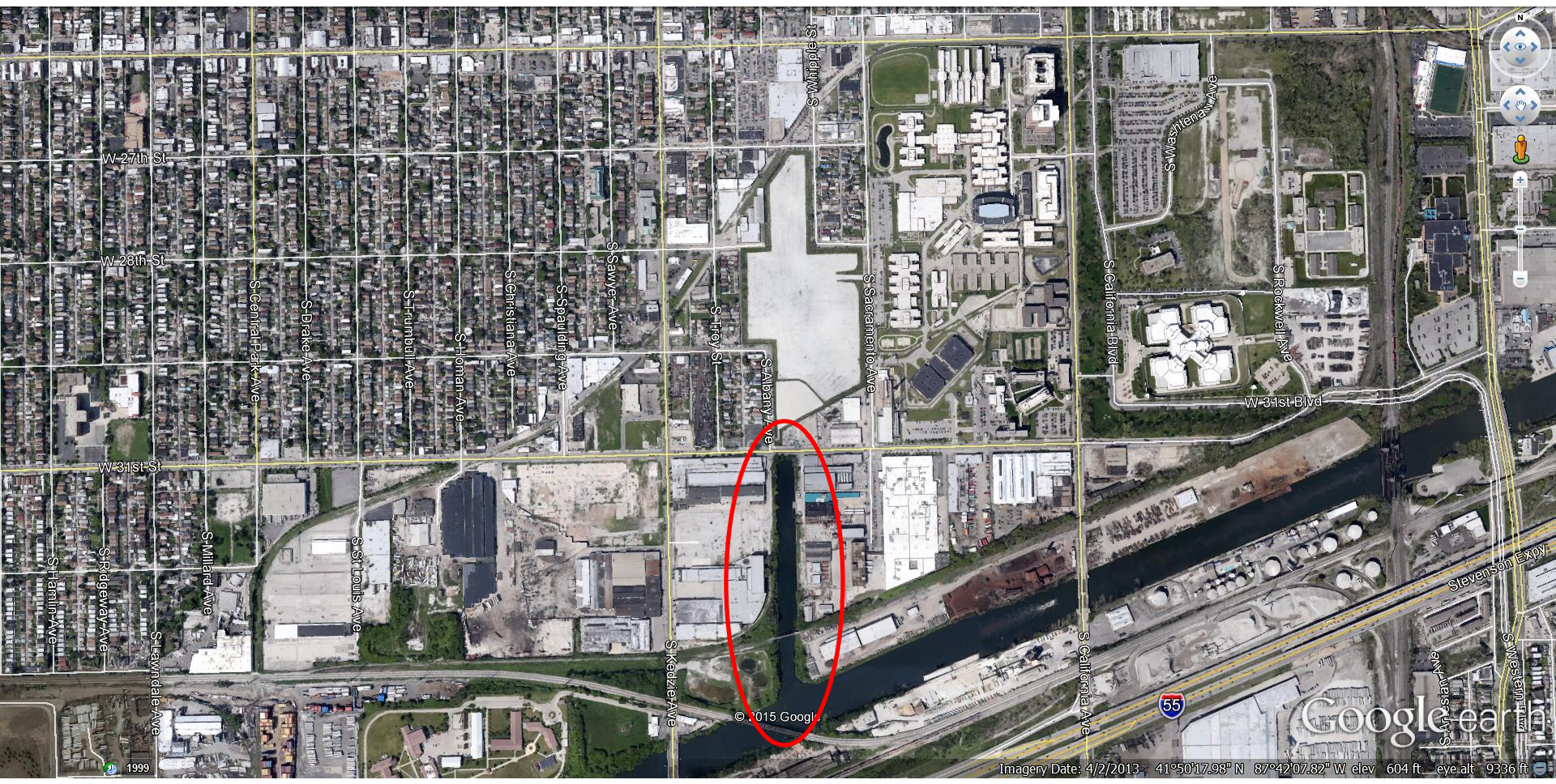


CDOT Traffic Study



Addressing stormwater through green infrastructure spaces

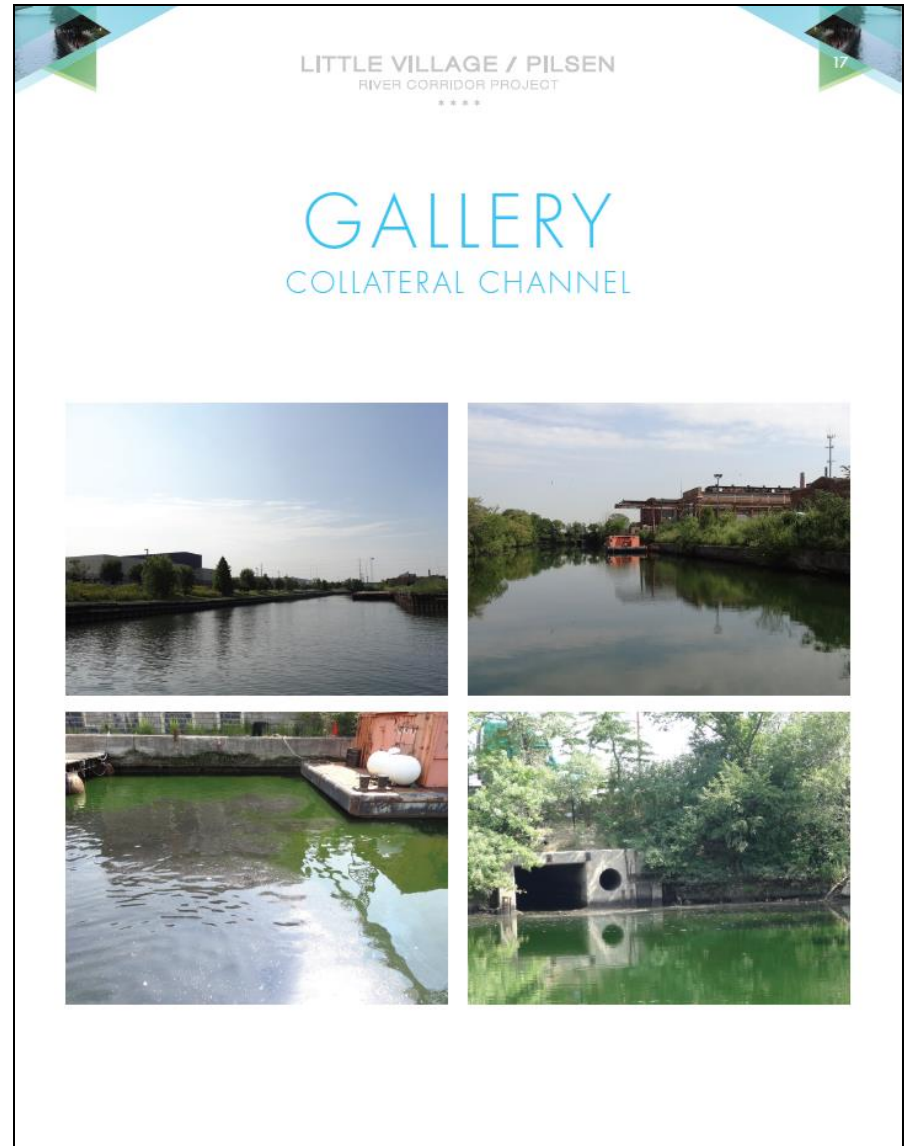
Work with Metropolitan Water Reclamation District to investigate feasibility of using the Collateral Channel as a conduit for stormwater, for recreation, and habitat.



Addressing stormwater through green infrastructure spaces

Little Village/Pilsen River Corridor Project

- LVEJO
- Friends of the Chicago River
- P.E.R.R.O.



Small Group Discussions (7:00 – 8:00)

- Staff from CMAP, the City, and Enlace, as well as resident leaders will be available to answer questions and facilitate discussion.
- You are welcome to start anywhere that you want and talk to as many people as you want.
- Each participant should have a marker and sticky notes – feel free to write down your ideas as well as share them verbally!

Small Group Discussions (7:00 – 8:00)

- Discussion topics:
 - Industrial areas and manufacturing
 - Open space and neighborhood routes