



**2010 Land  
Use Inventory**



# Common Classification Types

## Zoning

Town A		Town B	
<b>C-1</b>	Limited Commercial District	<b>C-1</b>	General Service District
<b>C-2</b>	General Commercial District	<b>C-2</b>	Restricted Planned Service District
<b>C-3</b>	General Services District	<b>C-3</b>	Centralized Commercial District
<b>C-4</b>	Restricted Commercial District	<b>C-4</b>	Local Retail District
		<b>C-5</b>	Restricted Local Retail District
		<b>C-6</b>	Restricted Special Service District
<b>I</b>	Industrial District	<b>I-1</b>	General Light Industrial District
		<b>I-2</b>	Restricted Light Industrial District

## Assessor Class

County A		County B	
<b>0050</b>	Comm. Res More than 6 Units	<b>C</b>	Commercial
<b>0052</b>	Comm. Vacant Land	<b>H</b>	Commercial Developers Relief
<b>0060</b>	Commercial	<b>X</b>	Commercial Recreational Land
<b>0062</b>	Commercial Vacant Land 20G4	<b>Z</b>	Commercial Land, Farm Leased
<b>0070</b>	Commercial Office		
<b>0072</b>	Comm. Vacant Land Office 20G4		
<b>8050</b>	Comm. Res Partial Exempt		
<b>8060</b>	Commercial Partial Exempt		
<b>8070</b>	Comm. Office Partial Exempt		
<b>8260</b>	Commercial Leasehold		
<b>0080</b>	Industrial	<b>I</b>	Industrial
<b>0082</b>	Industrial Vacant Land	<b>J</b>	Industrial Developers Relief
		<b>K</b>	Industrial Land, Farm Leased
		<b>M</b>	Industrial Recreational Land

# CMAP Land Use Classifications



## Major groupings:

- 11xx Residential
- 12xx Commercial
- 13xx Institutional
- 14xx Industrial
- 15xx Trans/Comm/Utility
- 2xxx Agriculture
- 3xxx Open Space
- 4xxx Vacant/Constr.
- 5xxx Water

## Categories within Institutional:

- 1310 Medical
- 1321 K-12 Education
- 1322 Higher Education
- 1330 Government
- 1340 Prison
- 1350 Religious
- 1360 Cemetery
- 1370 Other Institutional
- 1380 Argonne/Fermilab



# Local Technical Assistance Plans

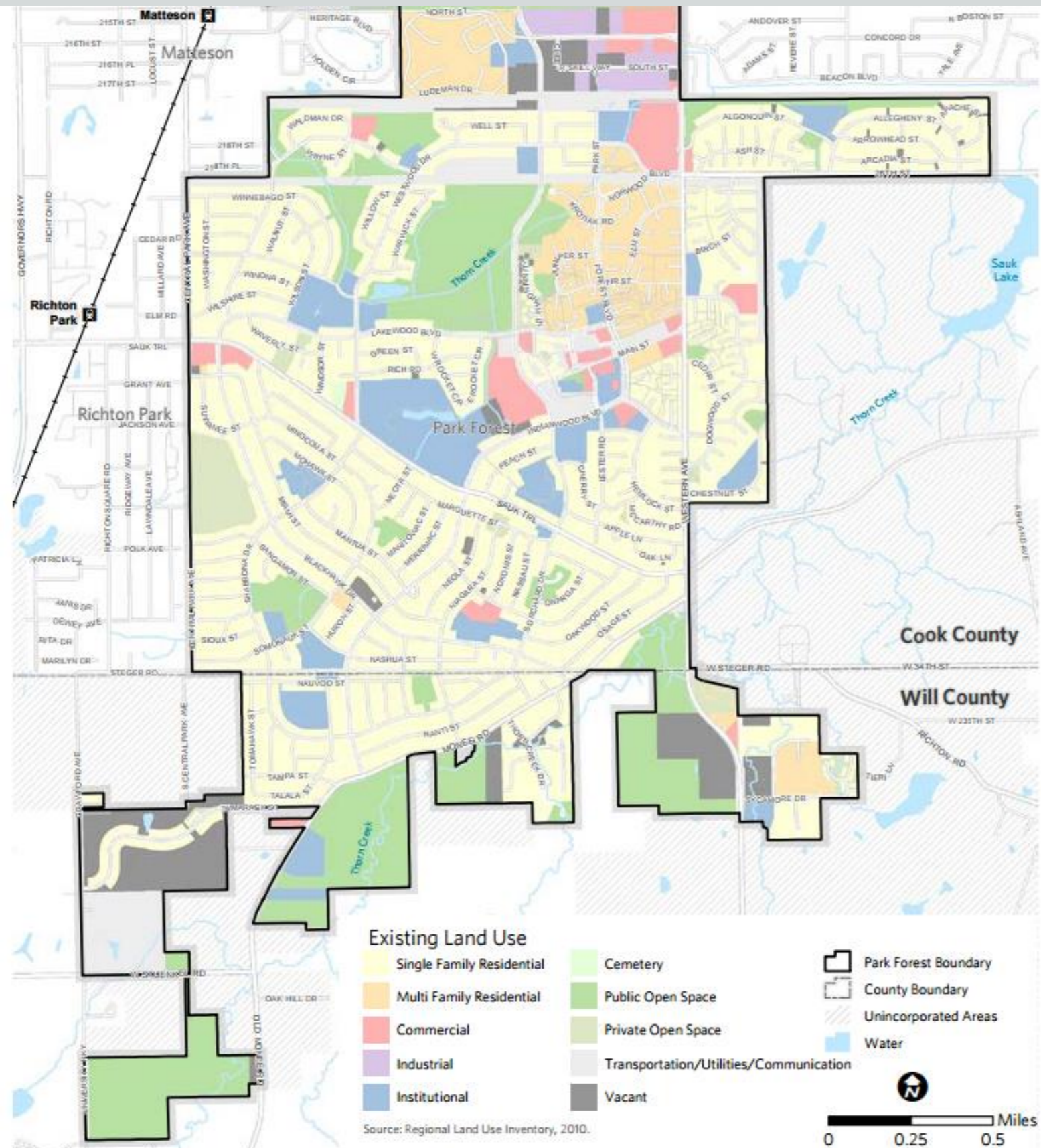




Figure 3. Land use in the 9 Lakes planning area.

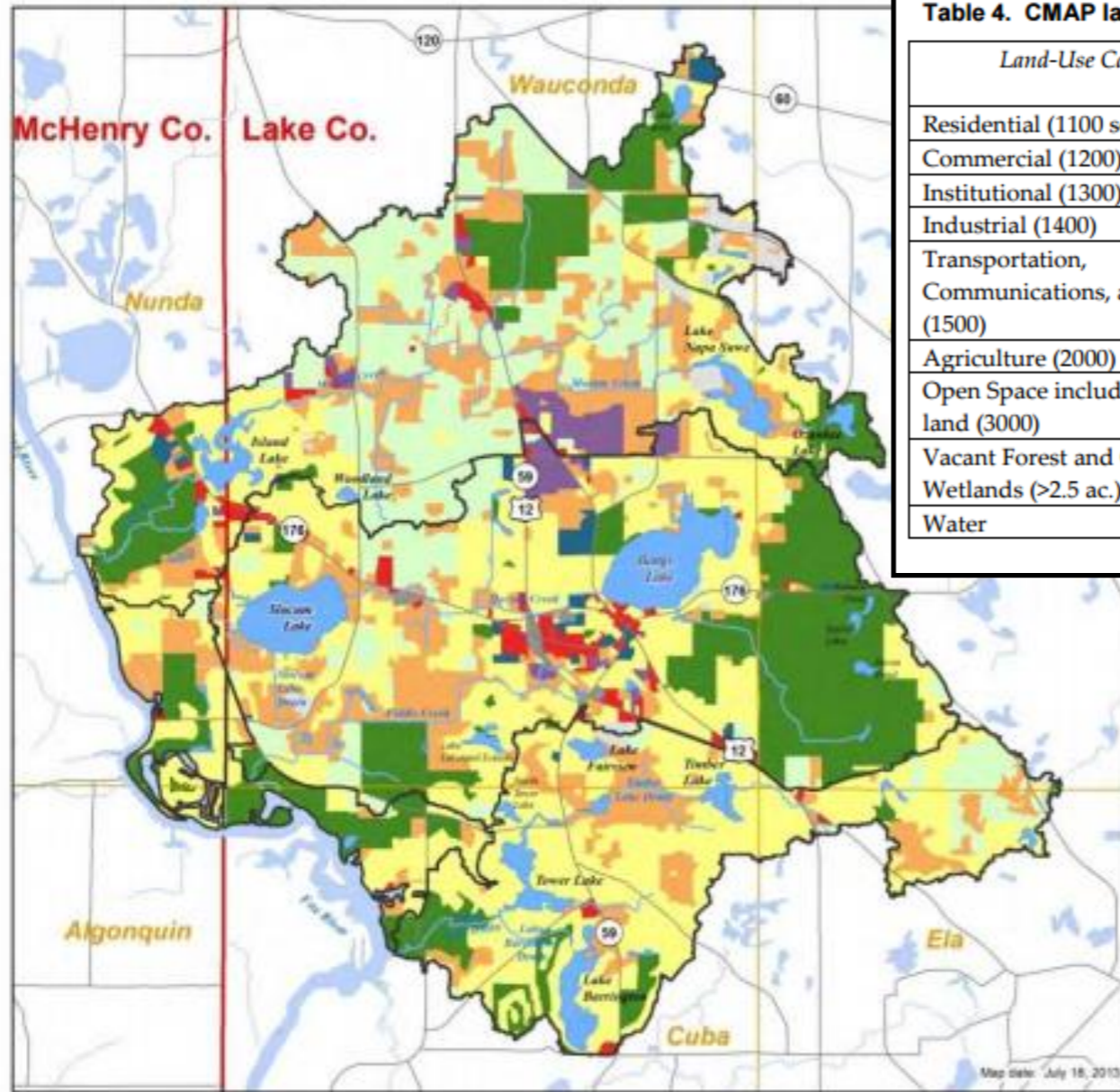


Table 4. CMAP land-use categories and extent within planning area.

Land-Use Category	Area (acres)	Area (sq. mi.)	% of Planning Area
Residential (1100 series)	6727	10.5	35.8
Commercial (1200)	378	0.6	2.0
Institutional (1300)	184	0.3	1.0
Industrial (1400)	350	0.6	1.9
Transportation, Communications, and Utilities (1500)	87	0.1	0.5
Agriculture (2000)	2835	4.4	15.1
Open Space including public land (3000)	3543	5.5	18.9
Vacant Forest and Grassland, Wetlands (>2.5 ac.) (4000)	3594	5.6	19.1
Water	1070	1.7	5.7

**Legend**

- 9 Lakes Planning Area
  - Waterbodies
  - Streams
  - Major roads
  - County
  - Township
- Land Use Categories**
- 1000 Residential
  - 1200 Commercial
  - 1300 Institutional
  - 1400 Industrial
  - 1500 Trans/Comm/Util
  - 2000 Agriculture
  - 3000 Open Space
  - 4000 Vac For/Gras/Wet
  - 4210 Under Construction- Residential

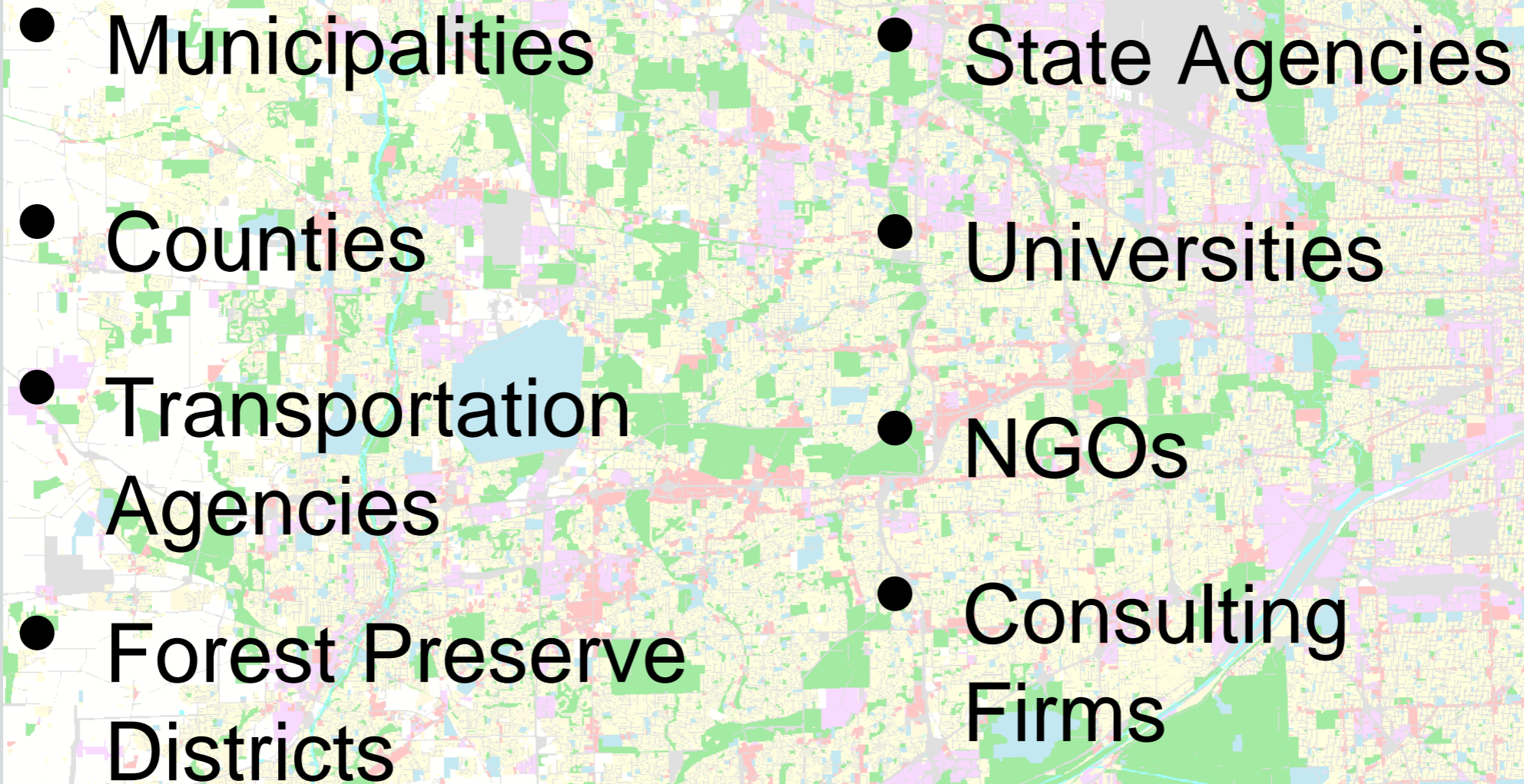


Data Sources: Watershed planning area - LCSMC (2012); County & township boundaries, CMAP (2005); Major roads - IRIS (2011); Waterbodies - CMAP (2005); Stream network - USGS National Hydrography Dataset (2007) & Lake County hydro lines (2002); Land Use - CMAP(2005).

# Watershed Planning

# Other Users:

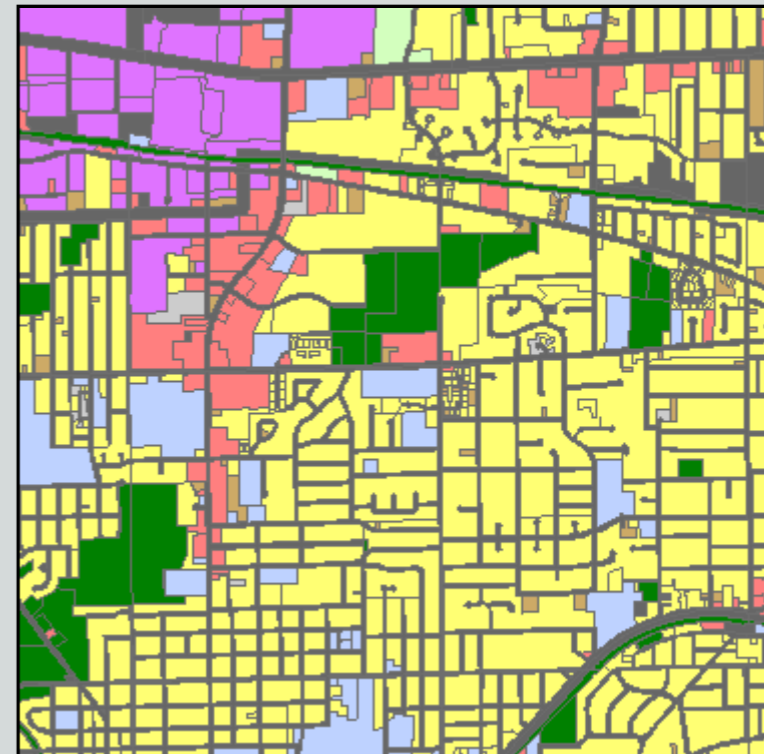
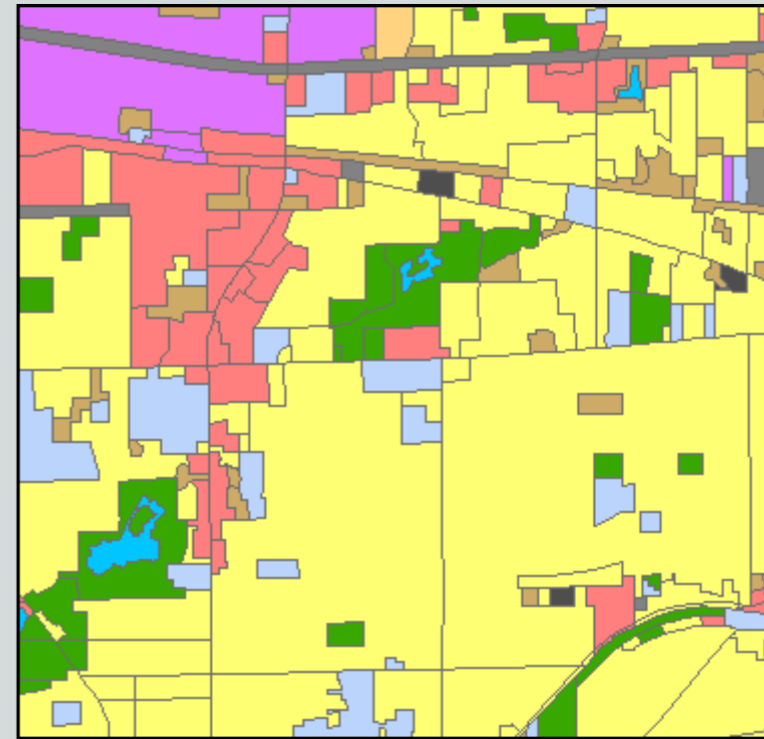


- 
- Municipalities
  - Counties
  - Transportation Agencies
  - Forest Preserve Districts
  - State Agencies
  - Universities
  - NGOs
  - Consulting Firms

# 2010: From Polygons to Parcels



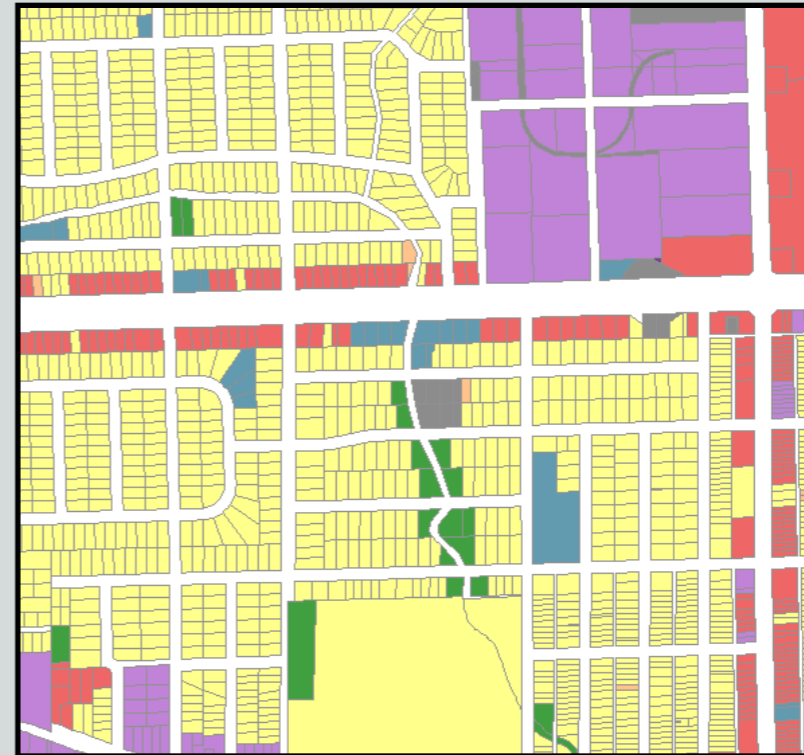
- **2005 Polygon-Based:**
  - We draw the lines
  - Land use carries out to street centerline
- **2010 Parcel-Based:**
  - Rely on county parcel geometry
  - Some coding can be automated
  - Uses do not extend into ROW



# “All-Parcel” Version for Internal Use



- Contains all 2,565,568 parcel polygons.
- Includes full PIN number, county assessor class, residential unit estimate.
- Owner name for non-residential parcels.
- No ROW polygons.
- Restrictions: CMAP or CMAP-contractor use only.



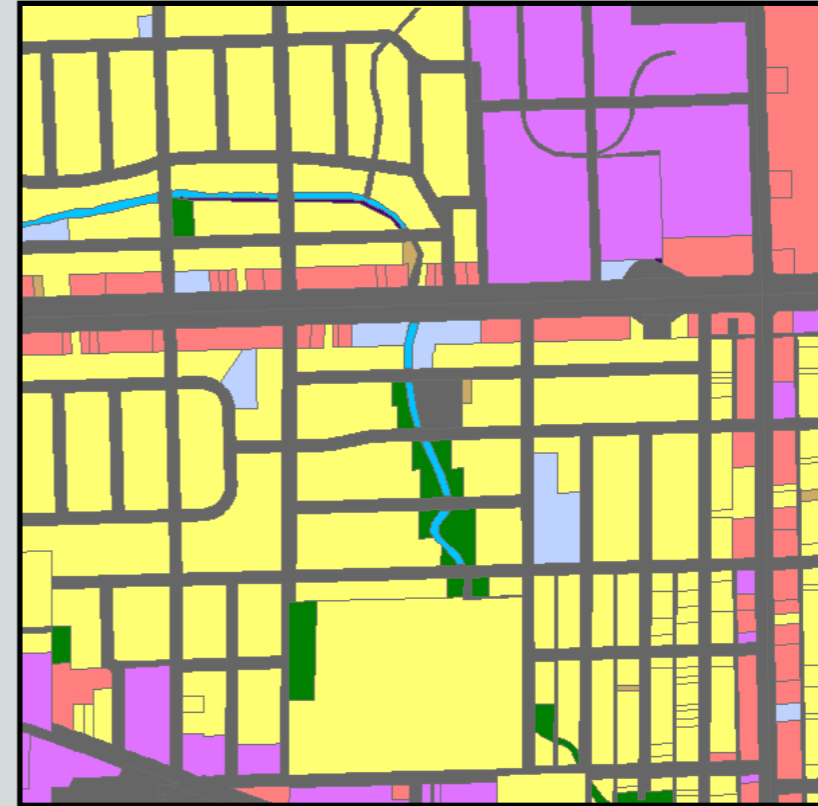
Field	Value
OBJECTID	920675
SHAPE	Polygon
PIN	1505222023
COUNTY	031
CO_PIN	031-1505222023
CO_USECODE	000
TAXNAME	NORTHLAKE CITY OF
LANDUSE	INST_GOVT
RES_UNITS	0
HAS_RES_EST	No
FAC_NAME	
OS_MGMT	
PLATTED	
Modifier	



# Public Release Version



- Dissolved on common land use code.
- “No-parcel” polygons w/general category to fill in ROW gaps.
- Unrestricted: Available on the CMAP [Data Hub](#)

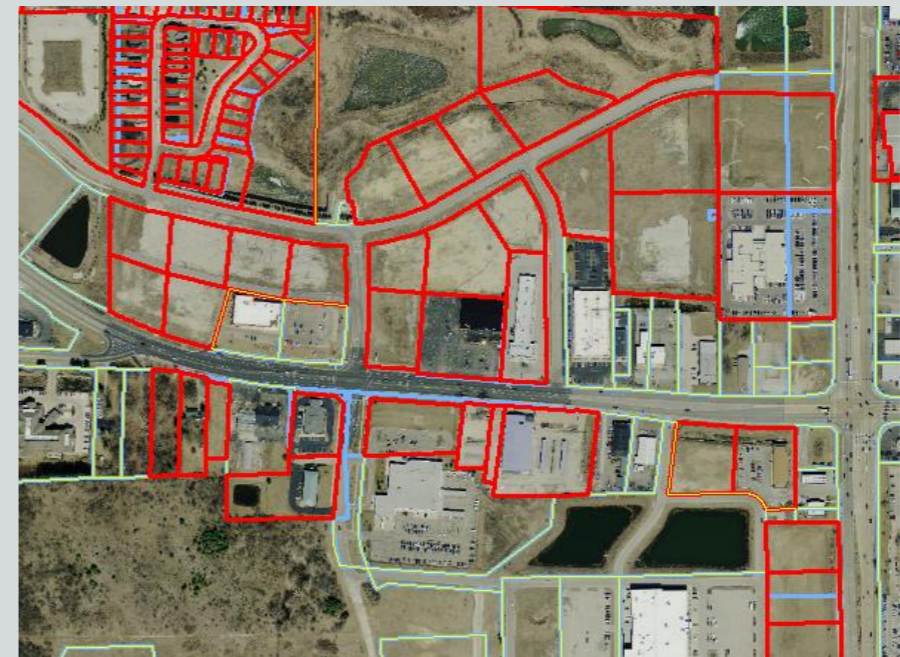


Field	Value
OBJECTID	318490
Shape	Polygon
LANDUSE	INST_GOVT
OS_MGMT	
FAC_NAME	
PLATTED	
MODIFIER	
LUI2010_ID	0311505130004
Shape_Length	1755.080314
Shape_Area	130726.009758

# Future Updates



- **2013 Update underway**
- **Compare 2010 parcel & assessment data to 2013 and flag possible change**
- **Review/code flagged parcels**





Thank  
You