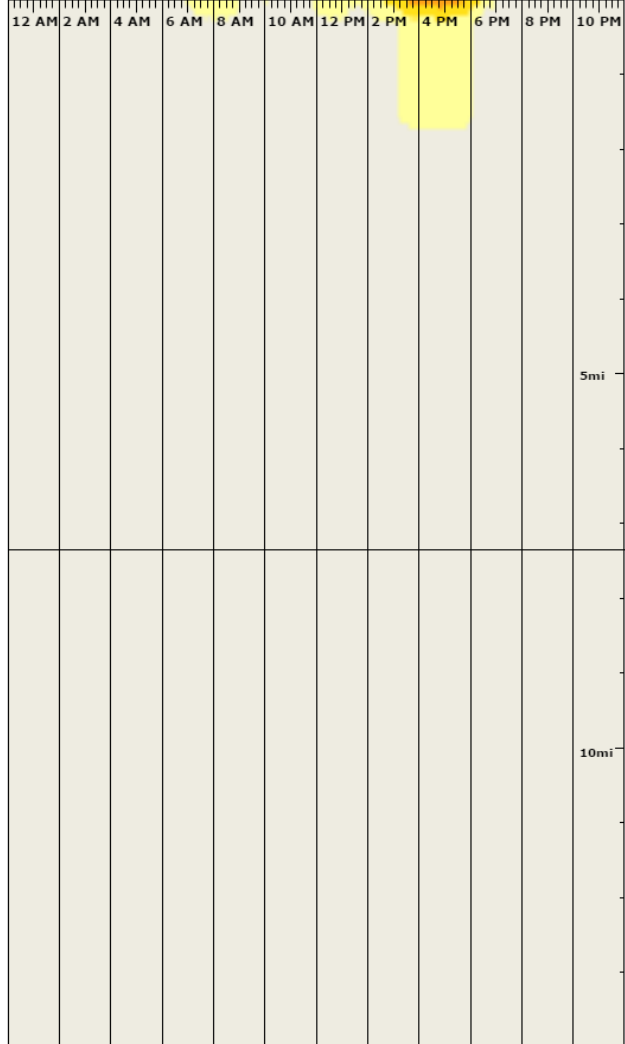


Speed on I-80 between Richards St/Exit 133 and I-355/Vets Meml Tollway/Exit 140 and I-80 between I-355/Vets Meml Tollway/Exit 140 and US-45/96th

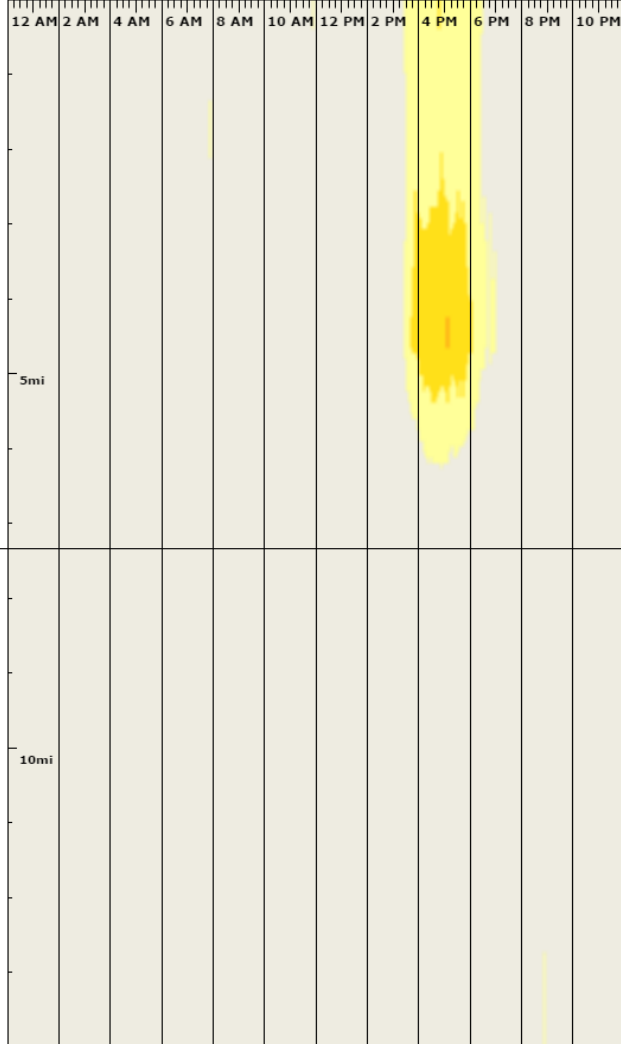
Ave/Exit 145 using NPMRDS (Trucks and passenger vehicles) data

Averaged by 5 minutes for December 2015 through November 2016 (every weekday)

December 2015 through November 2016 (every weekday)



December 2015 through November 2016 (every weekday)



The raw measured speed.

