

UNIVERSITY OF TORONTO 2050

Universe of layers

Land Use Committee
May 18, 2016

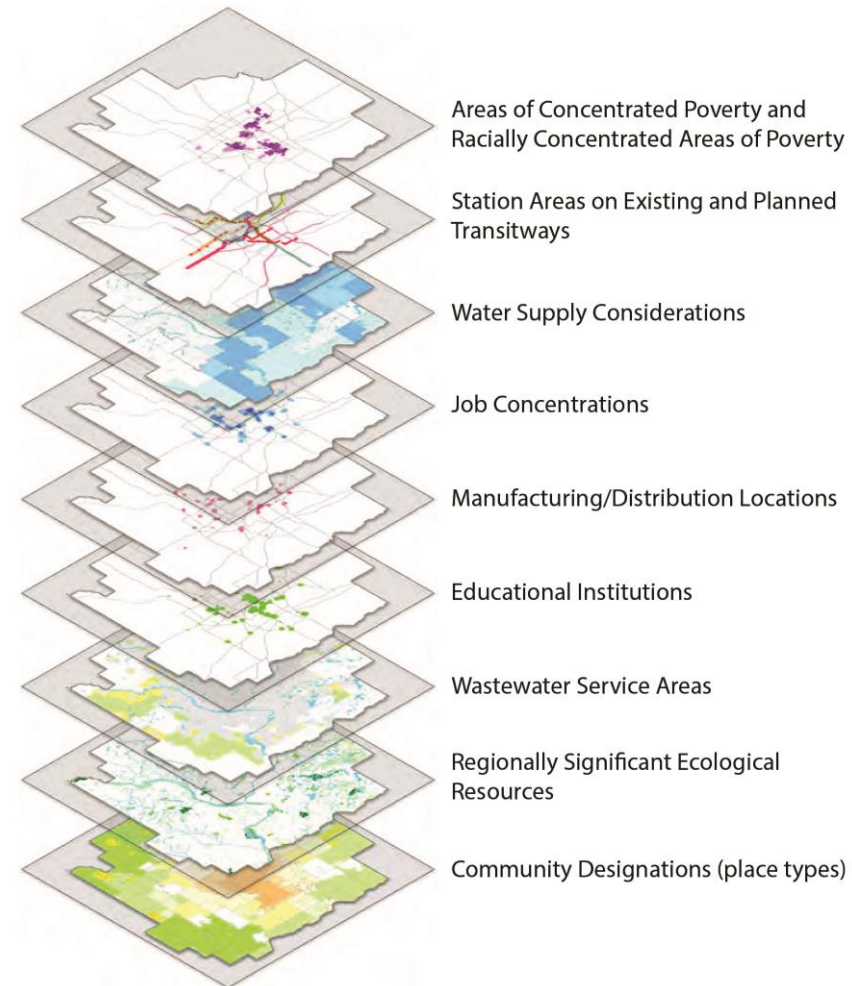
Kristin Ihnchak, CMAP

Definitions

- **Place-based approach:** framework for translating regional plan's policies to recommendations that can be readily taken up by local partners
- **Layers:** a type of place-based approach that uses data layers and mapping, along with relevant recommendations, to provide regional guidance on key topics
- **Target audiences:** may be useful for municipalities, counties, non-profits, civic groups, and transportation agencies

Layers Overview

- Useful for a wide range of topics with a spatial component
- More than just data provision – must inform more specific plan recommendations
- Not common in other MPOs' plans to the degree proposed, although limited use of layers is common



Layers example from Met Council

Ongoing Layers Activities

- **Pilot layers:** two example layers are being developed to test out the approach and determine how layers could be integrated in ON TO 2050
 - High quality natural areas
 - High priority reinvestment areas
- **Universe of layers:** list of potential layers that might be developed to forward ON TO 2050 policies

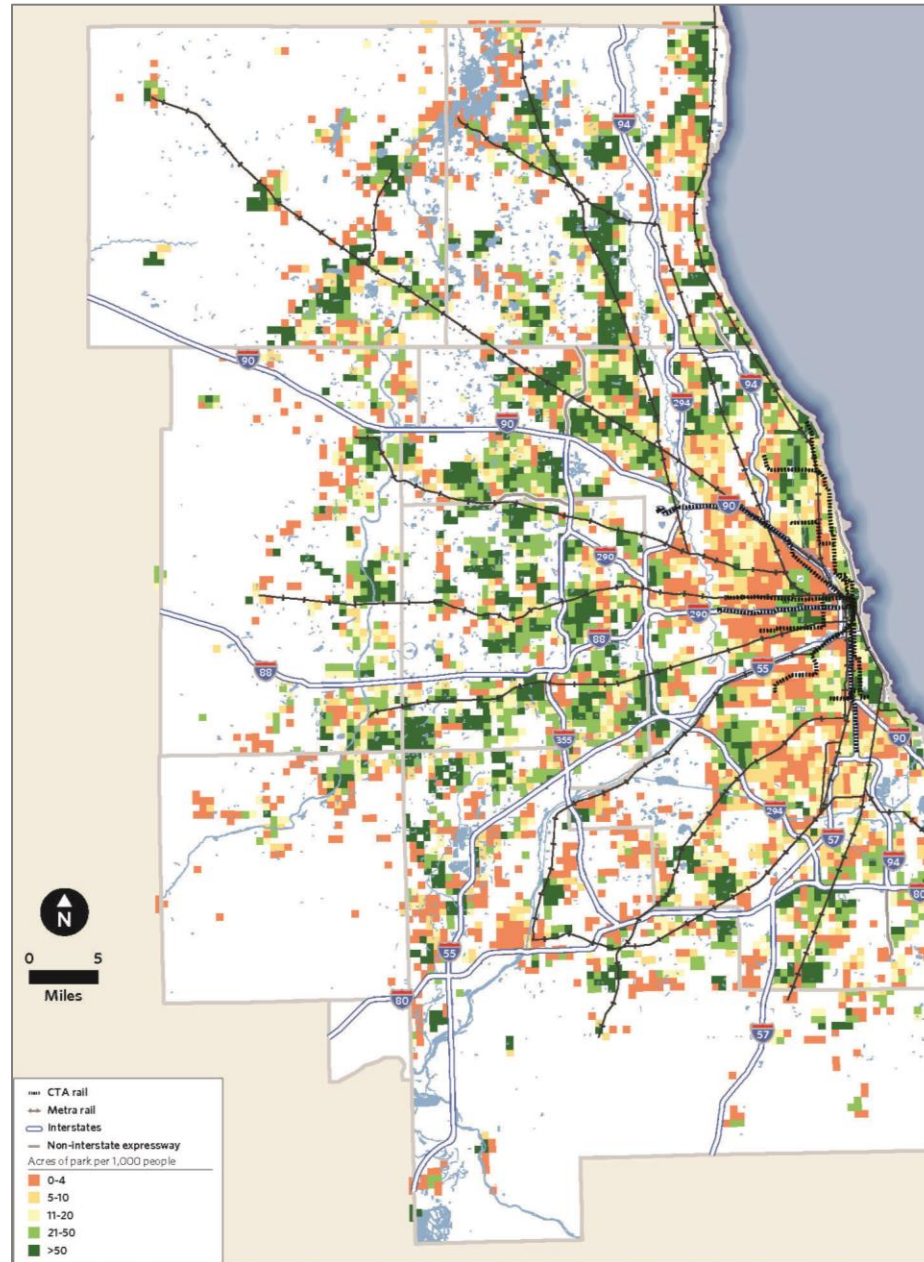
Example: High Priority Reinvestment Areas

PSRC Vision 2040



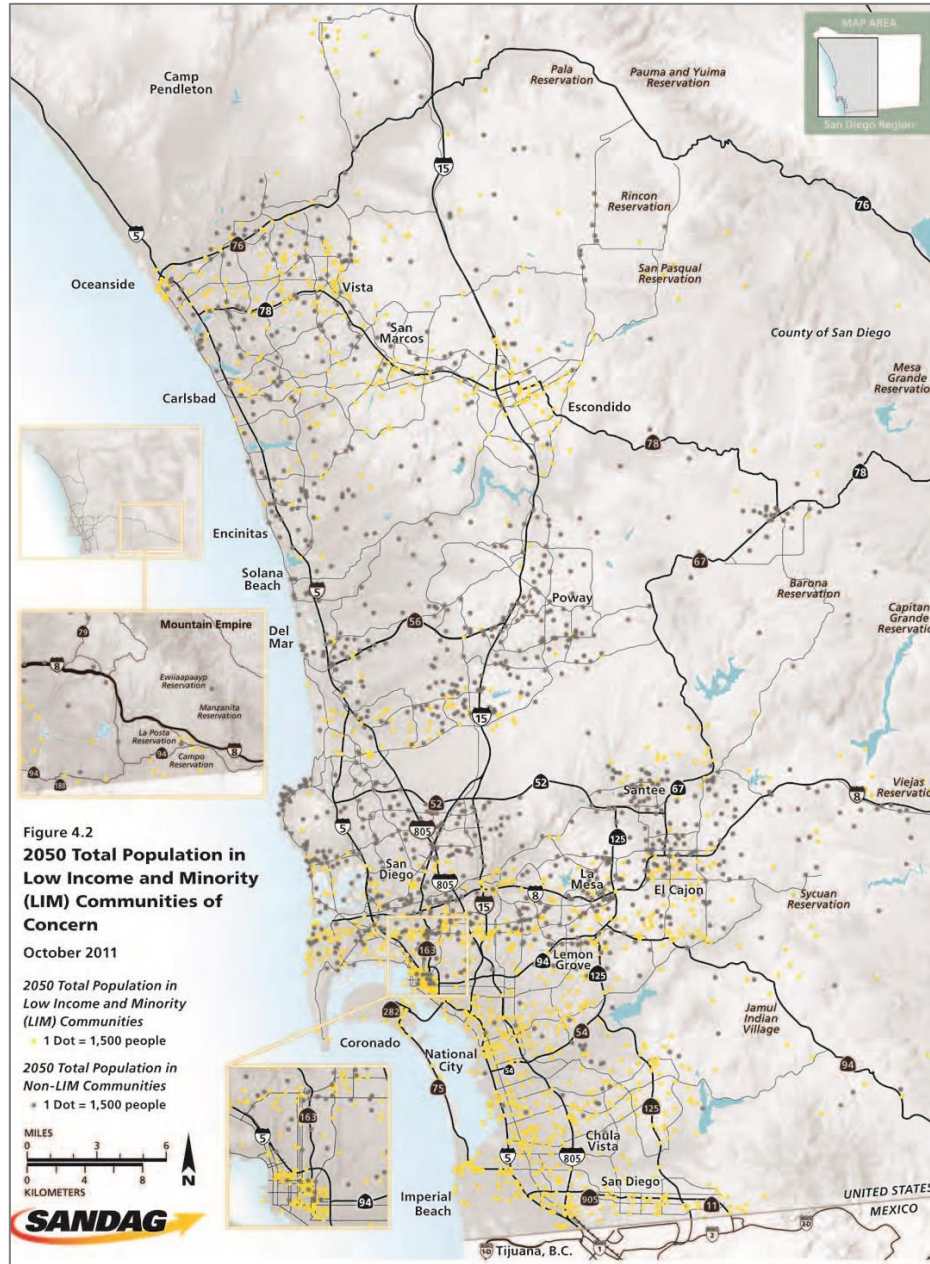
Example: Access to Parks

GO TO 2040



Example: Vulnerable Populations

SANDAG 2050 Regional Transportation Plan



Screening Questions

- Does the layer relate to a **key policy area** for ON TO 2050?
- Would the layer inform **more specific recommendations**?
What recommendations might come from the layer's development?
- Will the layer help forward **implementation** by inspiring action among local implementers?
- How **complex** is the layer to create? Would consensus-building among partners be required?
- Do we have ready **access to the necessary data** and information?

Key Land Use Policy Areas

- Reinvestment and infill
- TOD and transit-supportive land uses
- Lands in transition (agricultural and natural areas preservation)
- Tax policy and governance
- Housing supply and affordability
- Livability

Potential Layers

- Infill opportunity areas
- High priority reinvestment areas
- Disinvested areas
- Critical growth areas
- Key agricultural areas
- Housing market areas
- Housing opportunity areas
- Freight planning areas
- Employment centers
- Vulnerable populations
- Municipal tax base

Discussion Questions

- Are there any layers in the list that seem particularly useful? Which would you prioritize?
- Are there any layers missing?
- Do you have any ideas about the methodology or data we might use to create these layers?

Next Steps

- Discuss universe of layers with CMAP committees; refine list of potential layers
- Continue to develop pilot layers
- Select layers for development in FY 17 and beyond