

# DESIGNING THE FUTURE: GEN X AND MILLENNIALS IN 2050

OCTOBER 27 2016  
AN ON TO 2050 BIG IDEAS FORUM

MODERATOR **JANET SMITH**  
PANELISTS **SHELLEY STERN GRACH** •  
**MATTHEW PHILLIPS** • **HEIDI WANG**

## DESIGNING THE FUTURE: GEN X AND MILLENNIALS IN 2050

By 2050, metropolitan Chicago's senior population is expected to double. How will this demographic shift reshape our communities and the lifestyles of seniors and non-seniors alike? How will aging in place be different for the seniors of tomorrow — Gen X and Millennials — than for seniors today? CMAP, Enterprise Community Partners, and Lifetime Communities Collaborative invite you to hear a panel of experts in technology, design, and development discuss how their fields are preparing for the "age wave," and how seniors of every race, ethnicity, and income can live well in the coming decades.

WHEN  
**October 27, 2016**  
**10:00 to 11:30 a.m.**

WHERE  
**University of Illinois**  
**at Chicago**  
**UIC Student Center East,**  
**Room 302**  
**750 S. Halsted Street**  
**Chicago, IL 60607**

Registration info at  
[www.cmap.illinois.gov](http://www.cmap.illinois.gov).

MODERATOR  
**Janet Smith,**  
associate professor, University of Illinois at Chicago  
and co-director of the Nathalie P. Voorhees Center

PANELISTS  
**Shelley Stern Grach,**  
director of civic engagement, Microsoft Chicago

**Matthew Phillips,**  
executive vice president, Senior Lifestyle

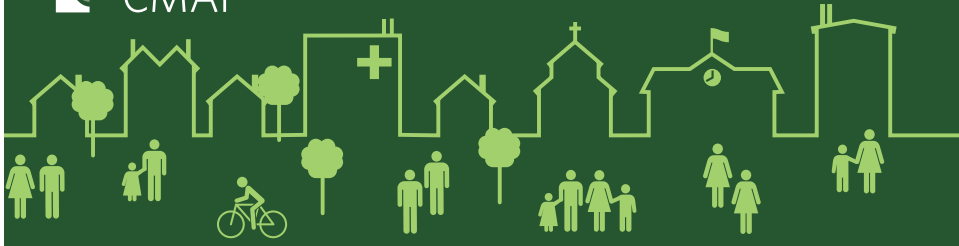
**Heidi Wang,**  
associate principal, Worn Jerabek Wiltse Architects, and  
American Institute of Architects Design for Aging co-chair

.....

CMAP and its partners are holding a series of ON TO 2050 Big Ideas Forums to engender debate about topics — Climate, Economy, Government, Housing, Land Use & Development, Natural Resources, Transportation, and more — that will shape the region's future. Participants will influence the policy emphases of the ON TO 2050 comprehensive regional plan as it proceeds toward adoption in October 2018.

Follow #2050BigIdeas on Twitter [@onto2050](https://twitter.com/onto2050) to add your big ideas for the region's future.

The University of Illinois Student Center East is ADA accessible. If you require a reasonable accommodation to attend or have questions, please contact Jane Grover at [jgrover@cmap.illinois.gov](mailto:jgrover@cmap.illinois.gov) or 312-386-8623.



# DESIGNING THE FUTURE: GEN X AND MILLENNIALS IN 2050

OCTOBER 27 2016  
AN ON TO 2050 BIG IDEAS FORUM

MODERATOR **JANET SMITH**  
PANELISTS **SHELLEY STERN GRACH** •  
**MATTHEW PHILLIPS** • **HEIDI WANG**

## DESIGNING THE FUTURE: GEN X AND MILLENNIALS IN 2050

By 2050, metropolitan Chicago's senior population is expected to double. How will this demographic shift reshape our communities and the lifestyles of seniors and non-seniors alike? How will aging in place be different for the seniors of tomorrow — Gen X and Millennials — than for seniors today? CMAP, Enterprise Community Partners, and Lifetime Communities Collaborative invite you to hear a panel of experts in technology, design, and development discuss how their fields are preparing for the "age wave," and how seniors of every race, ethnicity, and income can live well in the coming decades.

WHEN  
**October 27, 2016**  
**10:00 to 11:30 a.m.**

Registration info at  
[www.cmap.illinois.gov](http://www.cmap.illinois.gov).

WHERE  
**University of Illinois**  
**at Chicago**  
**UIC Student Center East,**  
**Room 302**  
**750 S. Halsted Street**  
**Chicago, IL 60607**

MODERATOR  
**Janet Smith,**  
associate professor, University of Illinois at Chicago  
and co-director of the Nathalie P. Voorhees Center

PANELISTS  
**Shelley Stern Grach,**  
director of civic engagement, Microsoft Chicago

**Matthew Phillips,**  
executive vice president, Senior Lifestyle

**Heidi Wang,**  
associate principal, Worn Jerabek Wiltse Architects, and  
American Institute of Architects Design for Aging co-chair

.....  
CMAP and its partners are holding a series of ON TO 2050 Big Ideas Forums to engender debate about topics — Climate, Economy, Government, Housing, Land Use & Development, Natural Resources, Transportation, and more — that will shape the region's future. Participants will influence the policy emphases of the ON TO 2050 comprehensive regional plan as it proceeds toward adoption in October 2018.

Follow #2050BigIdeas on Twitter [@onto2050](https://twitter.com/onto2050) to add your big ideas for the region's future.

The University of Illinois Student Center East is ADA accessible. If you require a reasonable accommodation to attend or have questions, please contact Jane Grover at [jgrover@cmap.illinois.gov](mailto:jgrover@cmap.illinois.gov) or 312-386-8623.