


Will County Bikeway Plan

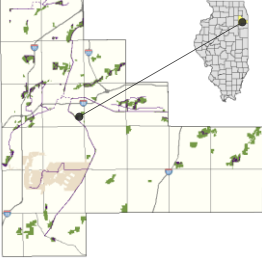

The Story of Collaboration

Forest Preserve District of Will County
CMAP – Bike and Ped Task Force
December 14, 2016



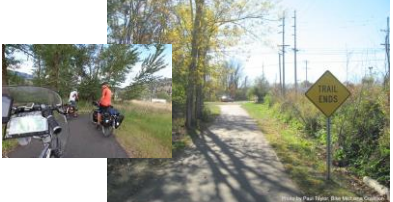
Forest Preserve District of Will County

- Our mission is to protect, conserve, enhance, and promote Will County's natural resources for public benefit.
- We accomplish this mission by acquiring land and either:
 - preserving and restoring it
 - developing it for recreation and educational use.
- Currently, the Forest Preserve owns, manages, and leases 21,880 acres of land and operates over 125 miles of trails. **Including, over 100 miles of bicycle trails.**

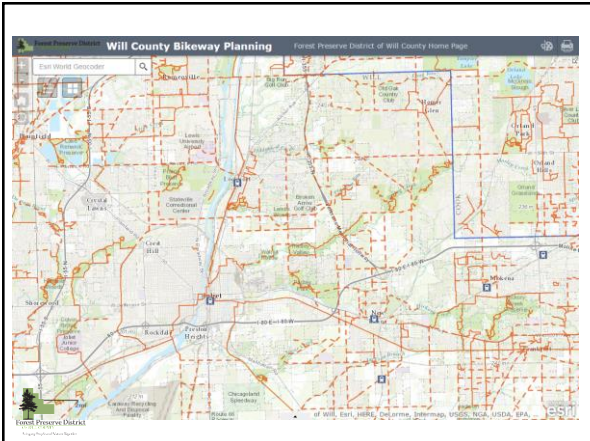



Bikeway Planning Background

Will County is the only county in northeastern Illinois that has not acknowledged bicycle and pedestrian transportation in a comprehensive transportation plan.





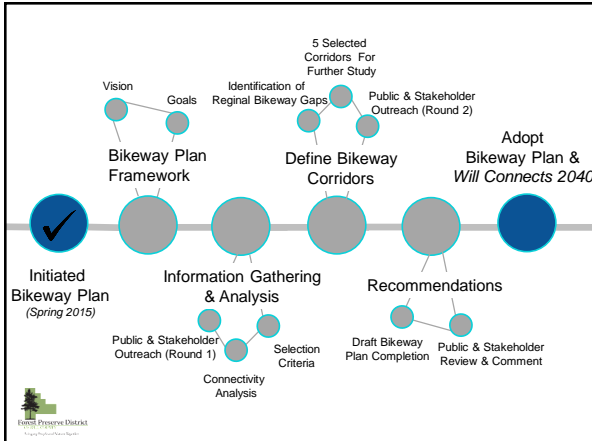
Will County Bikeway Plan Background

- This is not a Forest Preserve Bikeway Plan
- Why is Forest Preserve leading the way?
 - Forest Preserve is regional bikeway facilitator
 - Maintains regional GIS trail database
 - Timing
- What is the relationship between *Will Connects 2040* and the Will County Bikeway Plan?

Forest Preserve District

Steering Committee

- Forest Preserve District of Will County
- Will County Division of Transportation
- Will County Land Use Department
- Will County Health Department
- City of Joliet
- City of Naperville
- City of Wilmington
- Village of Channahon
- Village of Plainfield
- Village of Romeoville
- Channahon Park District
- Naperville Park District
- Plainfield Park District
- Joliet Bicycle Club
- CWA Land Surveyors
- Folks on Spokes
- Joint Utility Locating Information for Excavators (JULIE)
- Mokena Citizen



Bikeway Plan Vision

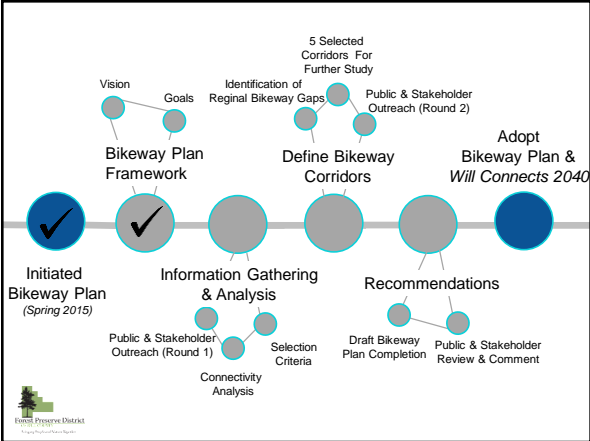
Bicycling is an integral part of the County's balanced multimodal transportation network, with seamless bikeways and trails that increase mobility to enable people of various ages and abilities to bicycle for any purpose in a safe and enjoyable environment.



Bikeway Plan Goals

- Expand Transportation Choice
- Enhance Connectivity
- Improve Safety
- Enhance Bicyclist Comfort
- Promote Cycling Benefits
- Implement Together





Public and Stakeholder Outreach

- Open House meetings
- Online community engagement
- **Will Connects** Website
- Newsletters
- Email updates



Open House Interactive Exercises



Open Houses: What we heard?

(Part 1)

- More transportation choice
- Share the road – add bike lanes where appropriate
- People are interested but concerned about safety
- Strong preference for a separation from motor vehicle traffic
- Desire to use trails for transportation and recreation purposes, though distance to work is a factor



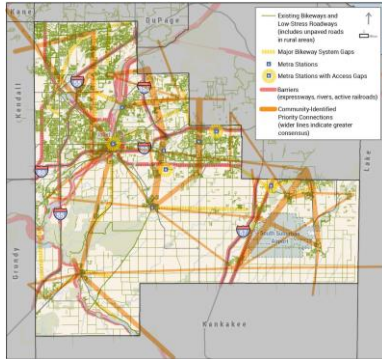
Open Houses: What we heard?

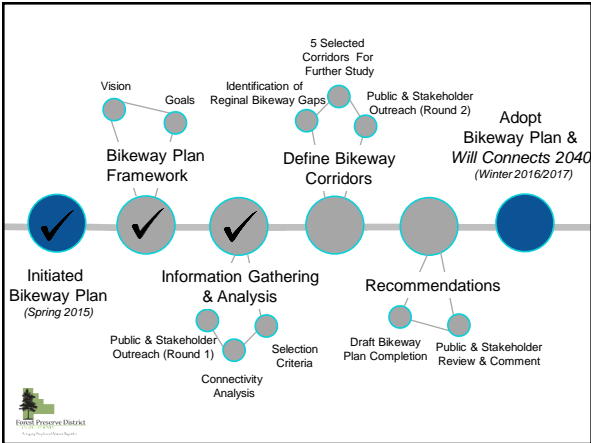
(Part 2)

- Poor connectivity to existing facilities; to desired destinations
- Crossings difficult (e.g., major roadways; railroads)
- Subdivisions lack bike/ped accommodations and/or isolate travelers from bike/ped opportunities
- Limited opportunities for east/west mobility



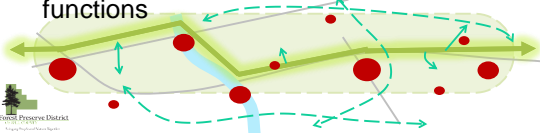
Connectivity Analysis Summary





Corridor Selection Approach

- Backbones for the Countywide Bikeway System
- Long-distance links with local connections
- Link communities, regional destinations, transit
- Serve transportation and recreation functions



Corridor Selection Criteria

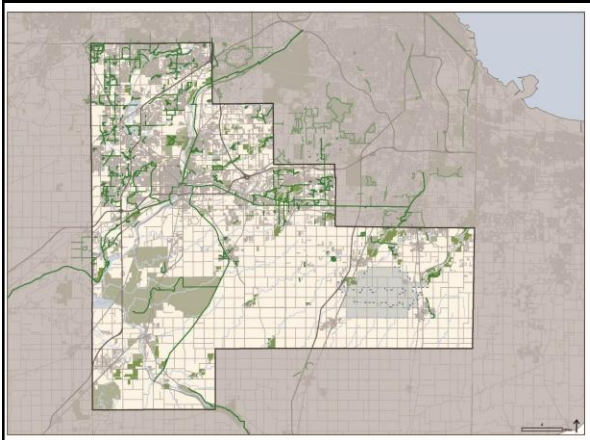
- Useful
 - Does the corridor improve access to regional destinations?
 - Does the corridor connect to existing trails and bikeways?
- Easy to follow
 - Does the corridor provide a direct route?
- Safe and comfortable
 - Does the corridor allow the provision of low-stress bikeways?

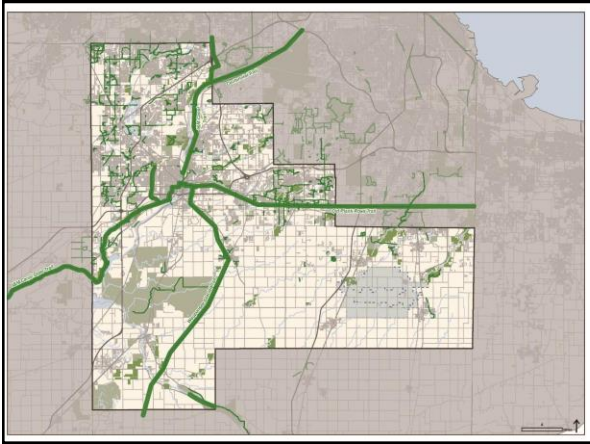


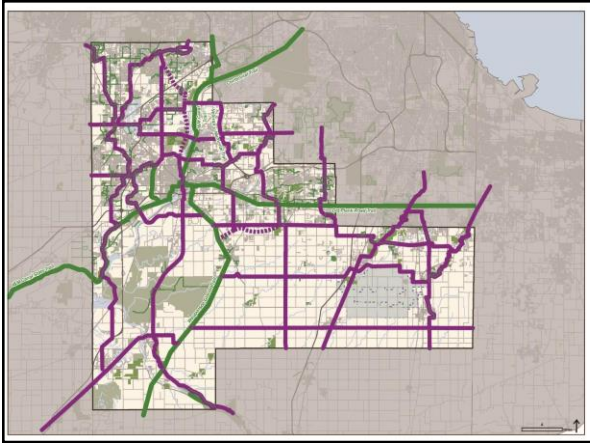
Corridor Selection Criteria

- Recreational value
 - Does the corridor provide recreational as well as transportation value?
- Feasibility
 - Is near-term implementation feasible within the corridor?



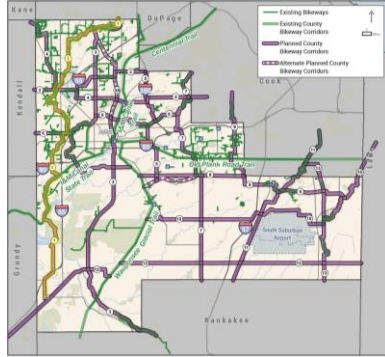




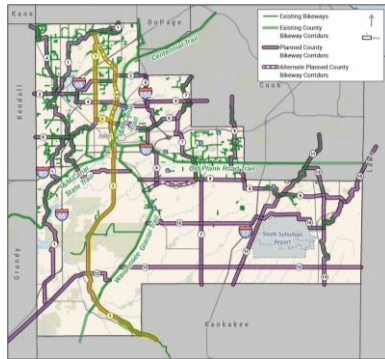




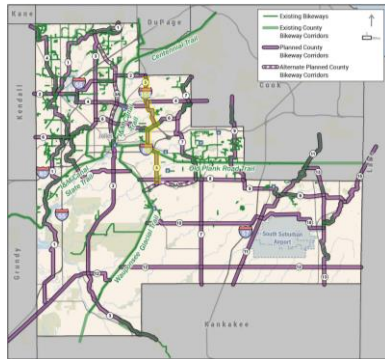
DuPage River Trail



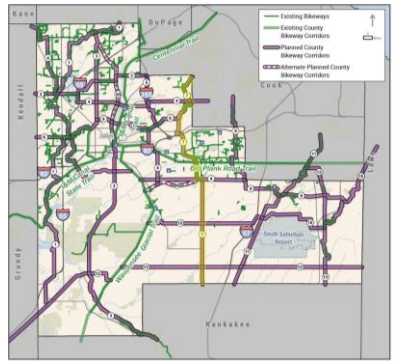
Weber Road / IL 53



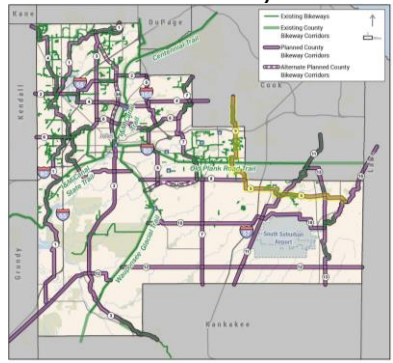
Veterans Memorial Trail to Jackson Creek



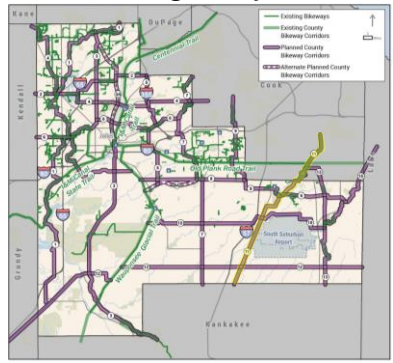
Spring Creek to Jackson Creek / US-45



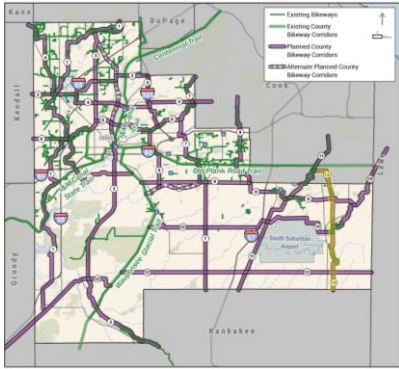
Tinley Park to Plum Creek Greenway



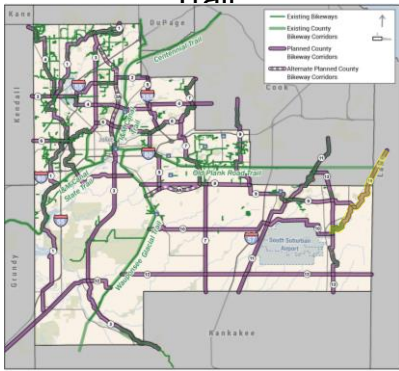
Thom Creek / Governor's Highway



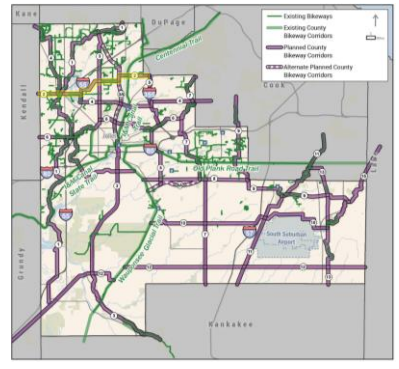
Vincennes Trail



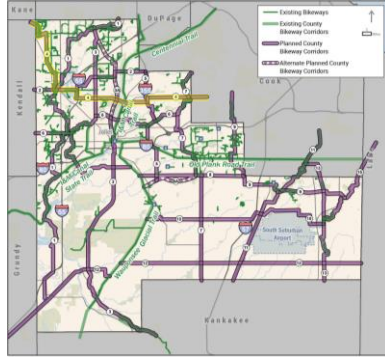
Plum Creek to Pennsy Greenway Trail



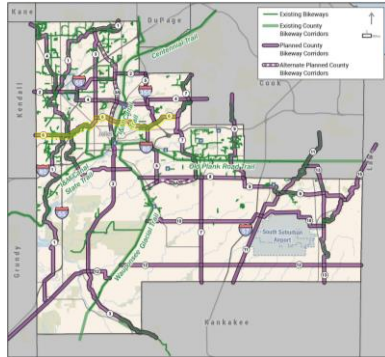
Plainfield to Veterans Memorial Trail



Aurora to Orland Park



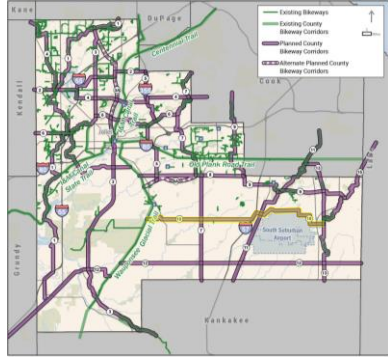
Black Road



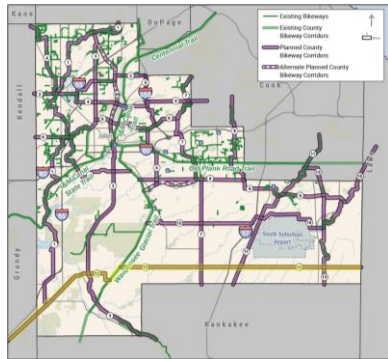
Rock Run to Harlem Avenue



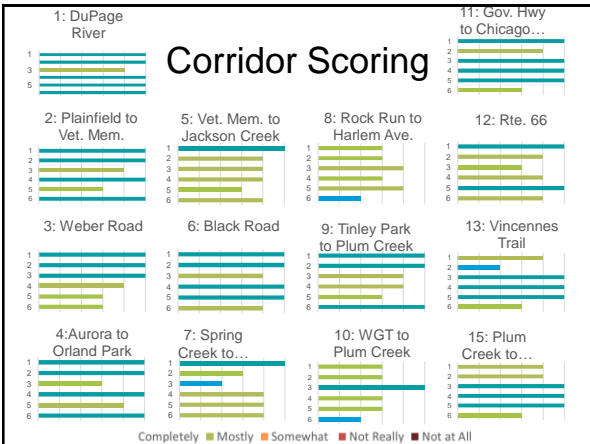
Wauponsee Glacial Trail to Plum Creek Greenway

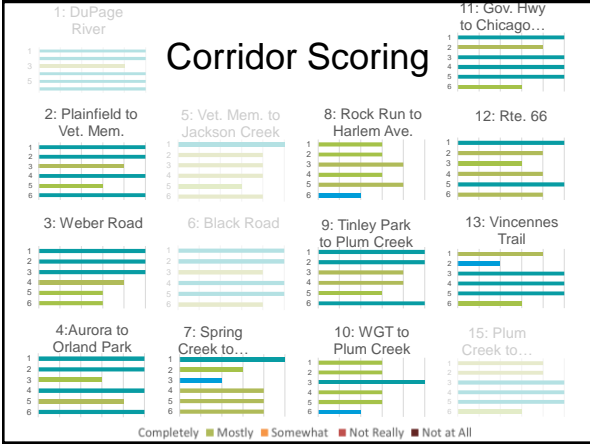


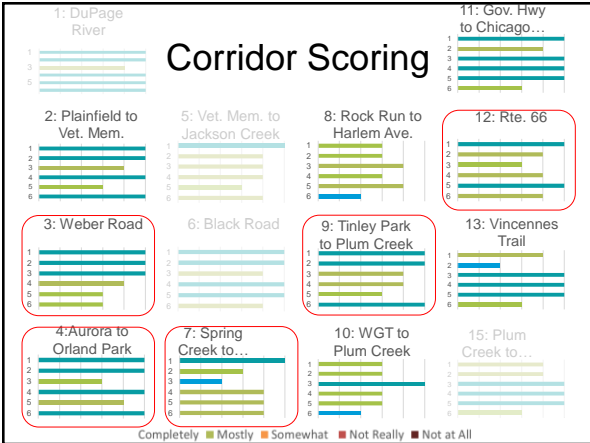
Wilmington Peotone Road / Route 66

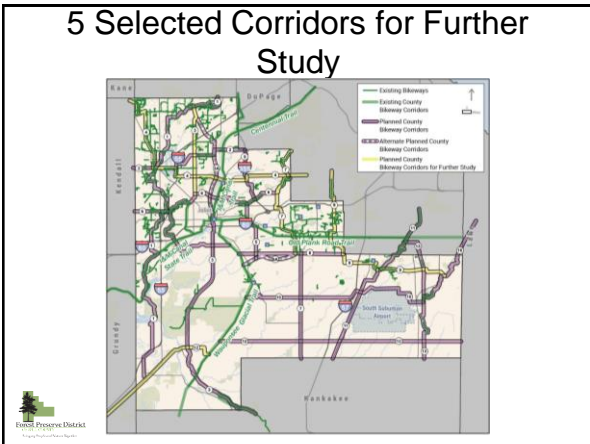


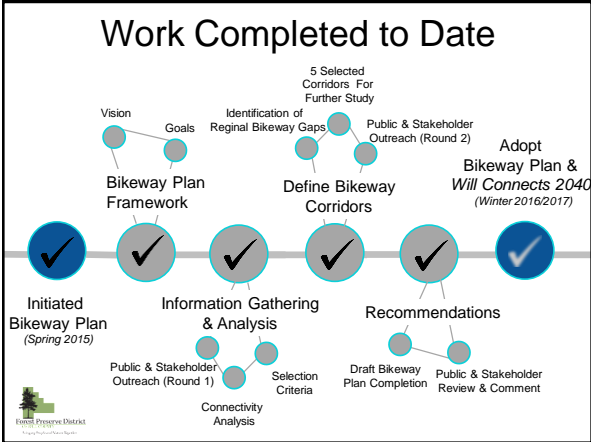
Corridor Scoring











- ### Next Steps
- **Will Connects 2040** LRTP adoption by Will County Board (proposed for adoption February 2017)
 - Local agency adoption
 - Forest Preserve will continue to collaborate with local agencies to assist with bikeway plan implementation
- Forest Preserve District

Thank You

**MAP YOUR NEXT ADVENTURE
RECONNECTWITHNATURE.ORG**

Forest Preserve District of Will County
Cori Crawford
(815) 727-8700
ccrawford@fpdwc.org

Forest Preserve District
