

# Kane County



# Division of Transportation



# FY2017 Budget & Capital Program

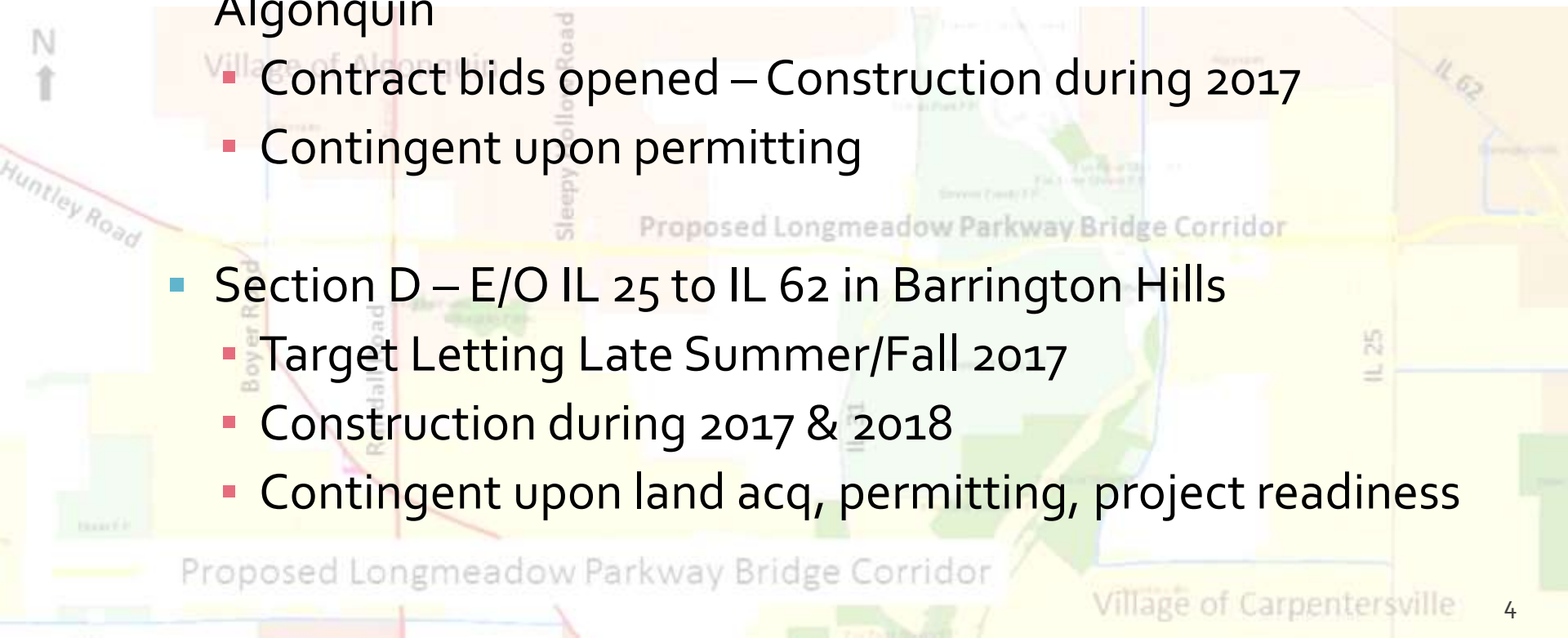
**Budget: \$97.9M**

- Increased \$37.4M from FY2016
- Capital Project Driven
  - Longmeadow \$25M
  - \$30M in bond proceeds
- Annual Fluctuations Expected
- Capital Program ~73% of Budget



# 2017 New Alignment Improvements

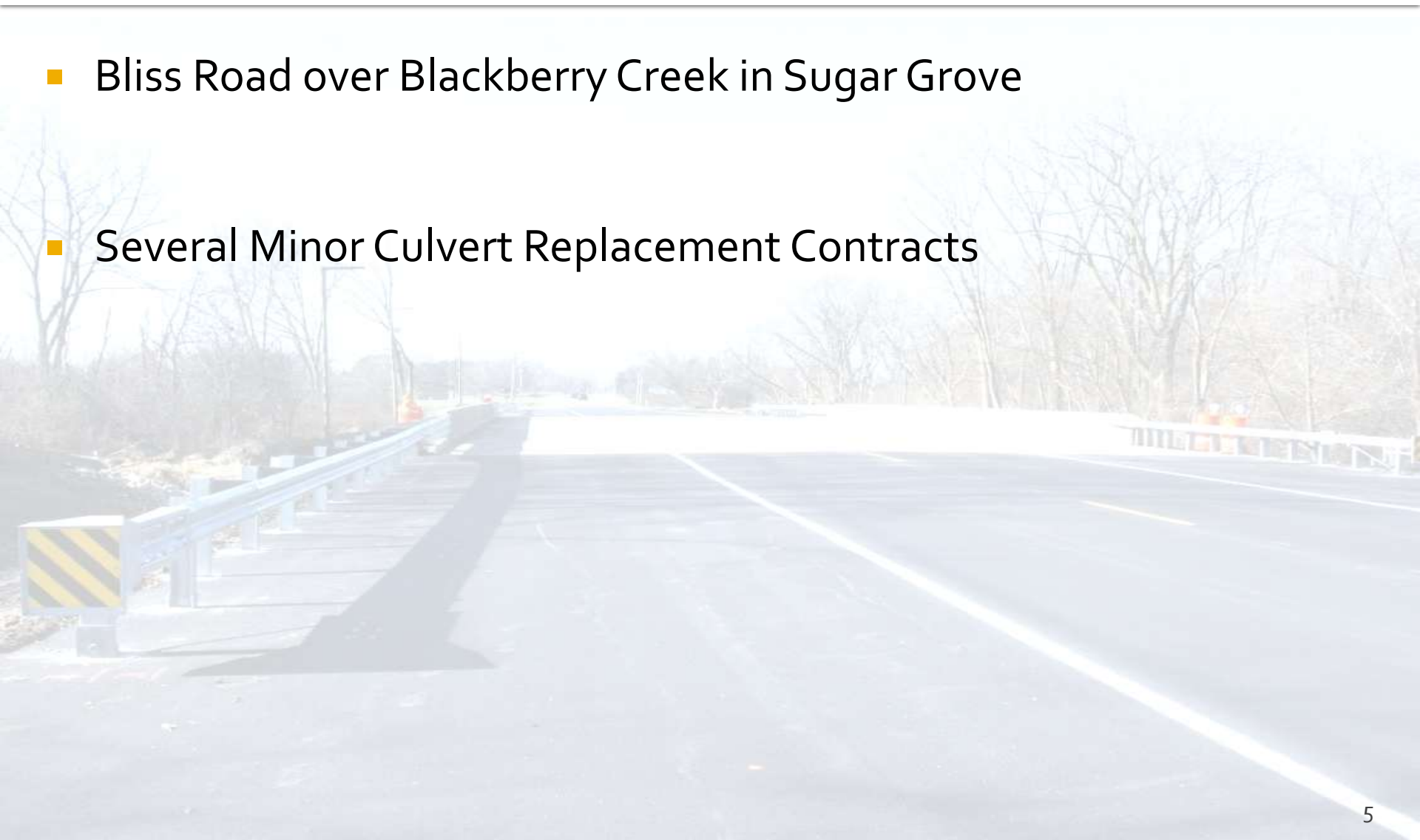
- Longmeadow Parkway Bridge Corridor
  - Section A-2/B-1 - W/O Randall Rd to E/O White Chapel in Algonquin
    - Contract bids opened – Construction during 2017
    - Contingent upon permitting
  - Section D – E/O IL 25 to IL 62 in Barrington Hills
    - Target Letting Late Summer/Fall 2017
    - Construction during 2017 & 2018
    - Contingent upon land acq, permitting, project readiness





# 2017 New Bridge Replace/Rehab/ Repair

- Bliss Road over Blackberry Creek in Sugar Grove
- Several Minor Culvert Replacement Contracts



# 2017 New Ped/Transit Improvements

- Randall Rd – Red Gate Rd to US 20 – Transit Enhancements
- Bliss Rd at Virgil Gilman Trail – Bike/Ped Flashing Beacon



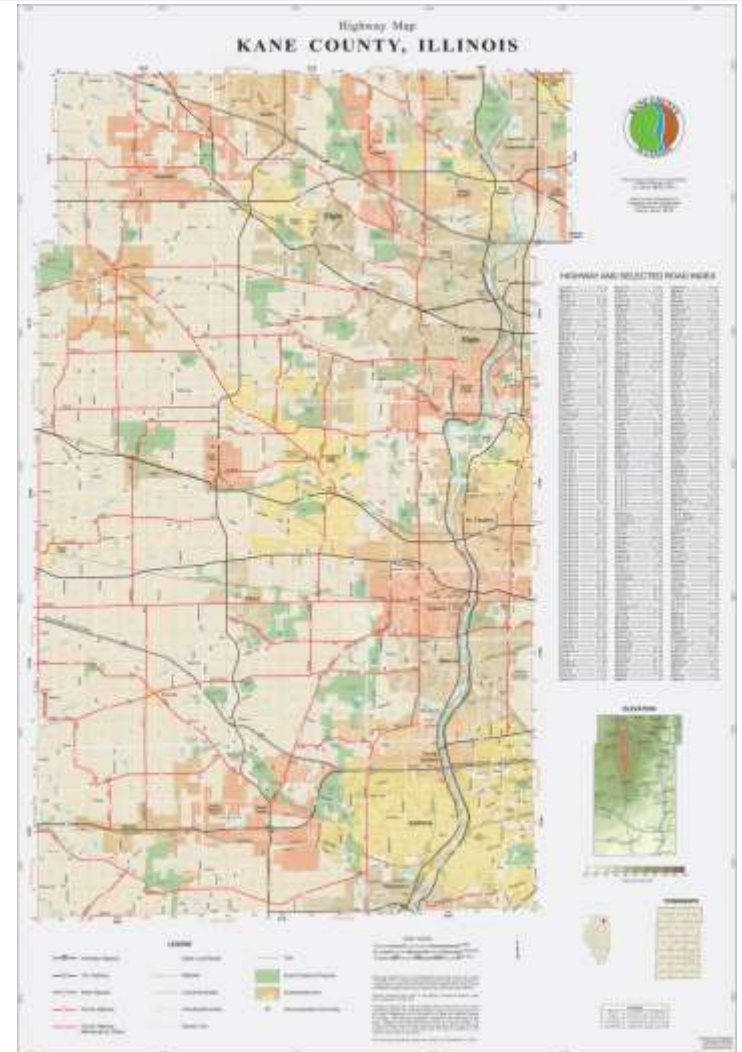
# 2017 New IT/Operations Improvements

- Randall Rd – Huntley Rd to Big Timber Road – Adaptive Signal Control



# 2017 New Pavement Maintenance

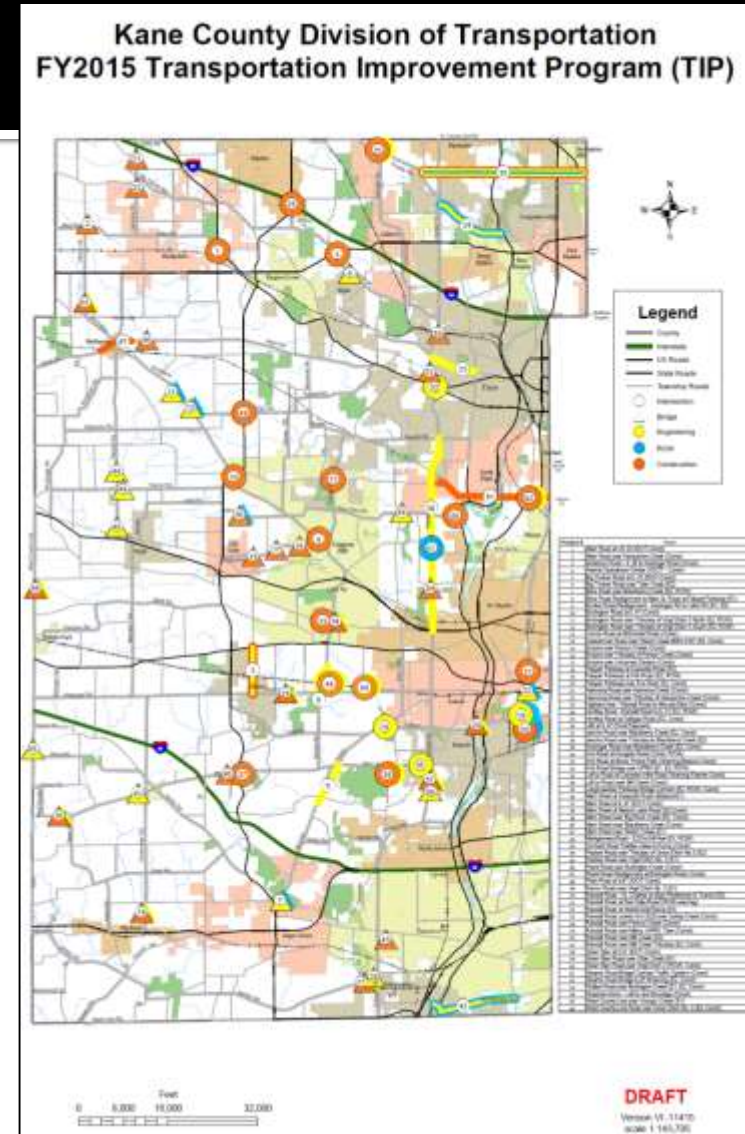
- Total 750 lane-miles
- Resurface 50 lane-miles annually
- FY2017 Budget: \$9M
  - Resurfacing
  - Pavement Preservation
  - Pavement Marking
  - Cracksealing





# 5-Year TIP

- Bridges-Intersections-Safety-Maintaining System
- Very Few “New” Projects (limited funding availability)
- Some Partially-Funded Projects
- Continued Evaluation of Innovative Funding



# Additional Info Available Online

[www.co.kane.il.us/dot](http://www.co.kane.il.us/dot)

Search This Site  Search

Home | Kane County Government | Employment | Site Index | Links | PAC

## KANE COUNTY DIVISION OF TRANSPORTATION

Carl Schoedel, P.E., Director of Transportation, County Engineer


ABOUT US  
CONTACT US  
FREEDOM OF INFORMATION ACT

Budget & Programming | Consultant Selection | Council of Mayors | Highway Projects | Impact Fees | Maintenance | Permits | Planning | Maps, Data & Publications

### What's New . . .

**TRAFFIC ADVISORIES - LONGMEADOW PKWY**

#### Dashboard Performance Measures



*Stearns Road Bridge Corridor  
APWA CMC Public Works Project Excellence Award*

#### Think About It! Protecting Our Health and Environment Adopt-A-Highway

#### LONG RANGE TRANSPORTATION PLAN UPDATE - SURVEY RESULTS

KDOT is in the process of updating the County's 2040 Long Range Transportation Plan. The Long Range Transportation Plan (LRTP) is a blueprint to address the transportation and mobility needs of those living and working in the County over the next 20 years. Public input helps us provide a transportation network that improves quality of life and accessibility for everyone. Our online interactive survey collected over 2,100 responses and over 3,500 individual comments on safety, congestion, biking and walking and transit. KDOT thanks everyone who participated. Comments and survey results are being reviewed and will help to develop the updated plan.

Visit the [LRTP webpage](#) to read more about the request to be part of our contact list.

#### IMPACT FEE UPDATE PUBLIC PROCESS

An update to the Kane County Comprehensive (CRIP) or Impact Fee Program is currently under review. The Advisory Committee started meeting in December throughout 2016 and into 2017 to complete the review. The committee will ultimately review and consider the update.

A Public Hearing is scheduled for Wednesday, June 15, 2017 at 7:00 pm at the Kane County Government Center. The hearing is to consider the adoption of a revised Comprehensive Ordinance and potential amendments to the Kane County Road Improvement Ordinance. Click here to view the [Notice 010417.pdf](#). Click here to view a copy of the [CRIP hearing](#).

Search This Site  Search

Home | Kane County Government | Employment | Site Index | Links | PAC


## KANE COUNTY DIVISION OF TRANSPORTATION

Carl Schoedel, P.E., Director of Transportation, County Engineer

ABOUT US  
CONTACT US  
FREEDOM OF INFORMATION ACT

Budget & Programming | Consultant Selection | Council of Mayors | Highway Projects | Impact Fees | Maintenance | Permits | Planning | Maps, Data & Publications

### Longmeadow Parkway Bridge Corridor



FAQs

Contact Info:  
Mr. Steve Coffinbarger  
Assistant Director  
Project Implementation  
[longmeadowcomments@co.kane.il.us](mailto:longmeadowcomments@co.kane.il.us)

**FAQs**  
Frequently Asked Questions

**Myths vs Facts**