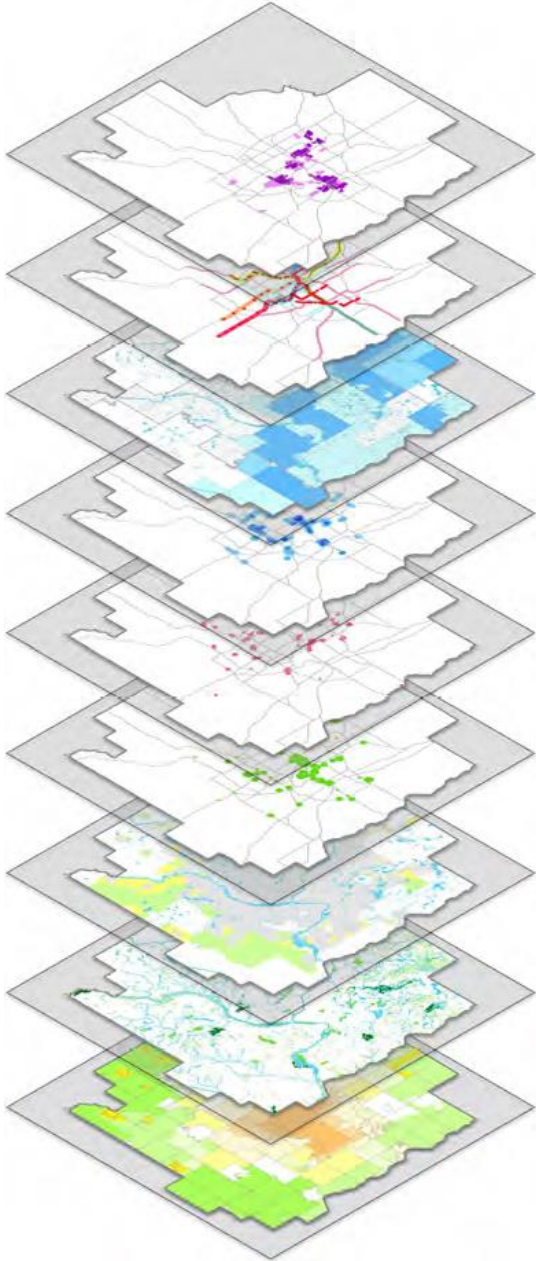


Place-Based Planning Strategies: Locally Identified Reinvestment Areas

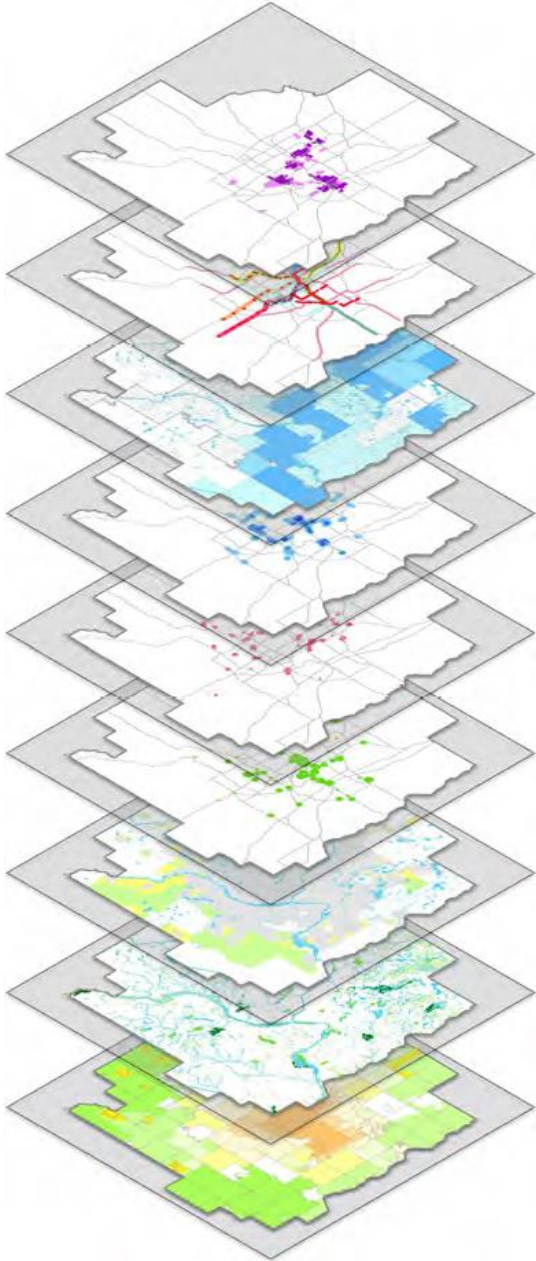
Land Use Committee
January 18, 2017

Overview



- **Place-based approach:**
 - Framework for translating regional plan's policies to recommendations that can be readily taken up by local partners.
 - Serves as a guide rather than a prescriptive set of standards
- **Layers:**
 - A type of place-based approach
 - Uses data mapping, along with relevant recommendations, to depict and analyze regional characteristics and spatial patterns, and to provide regional guidance on key topics
- **Target Audiences:** municipalities, counties, non-profits, civic groups, and transportation agencies

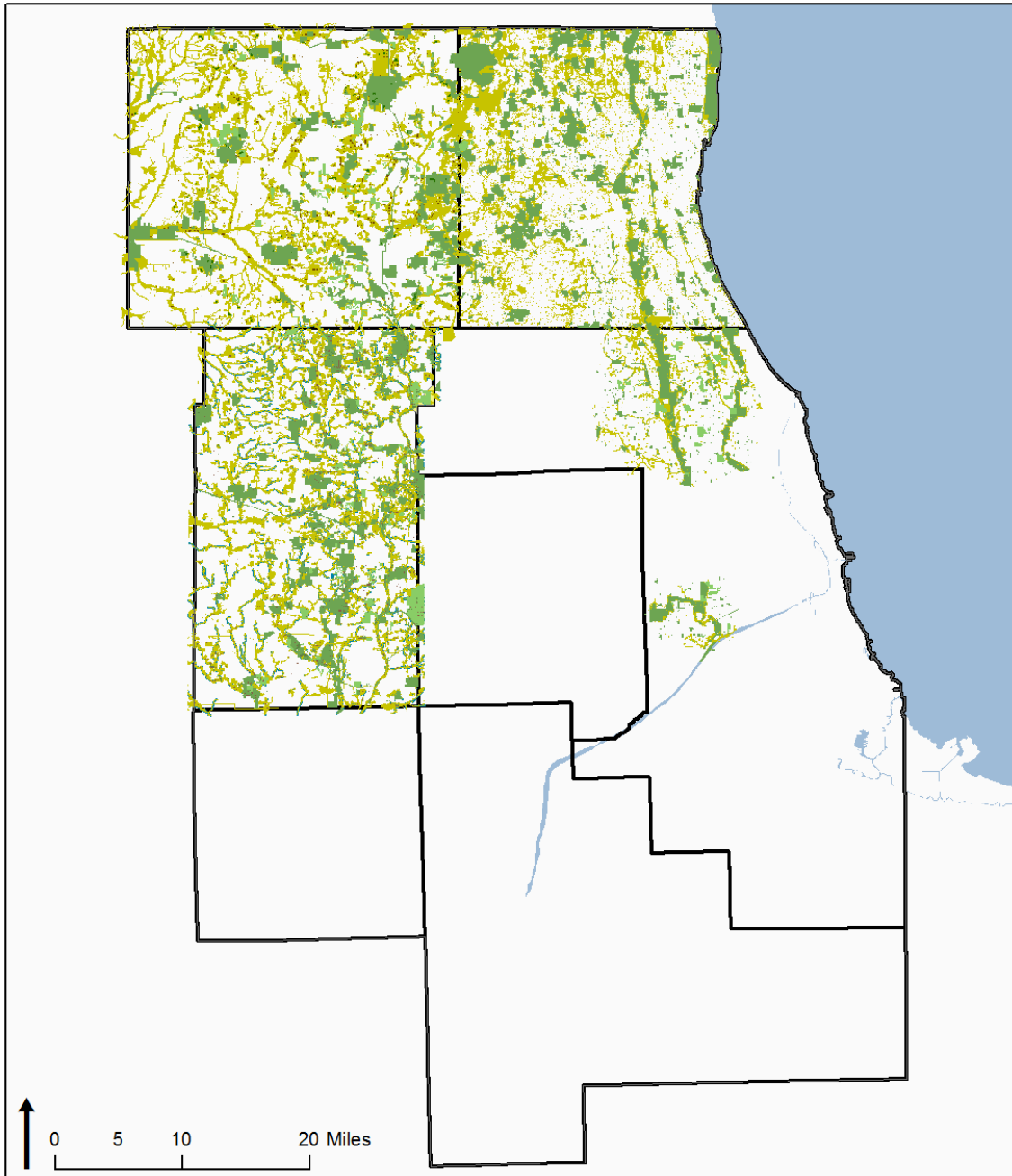
Overview



- **Pilot layers:**

- Layers developed through concurrent ON TO 2050 work, e.g., Infill Supportiveness layer
- Locally Identified Reinvestment Areas (LIRAs)
- Conservation Areas

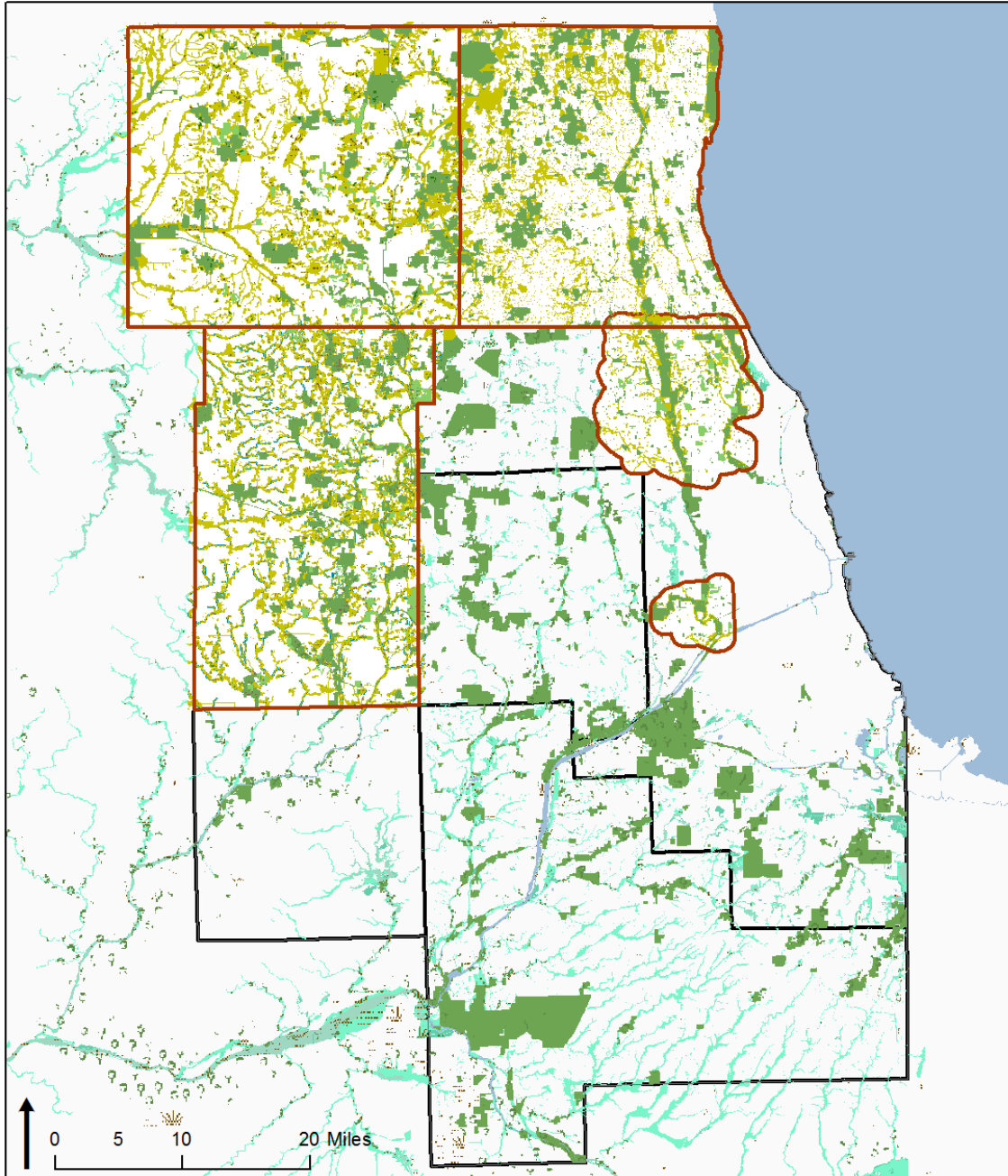
Conservation Areas Layer



Composite Local and Regional Green Infrastructure Plans

-  Wetlands
-  Oaks
-  Public Open Space
-  Private Open Space
-  Environmental Resource Areas







Conservation Areas Layer



Composite Local and Regional Green Infrastructure Plans

-  Wetlands
-  Oaks
-  Public Open Space
-  Private Open Space
-  Environmental Resource Areas

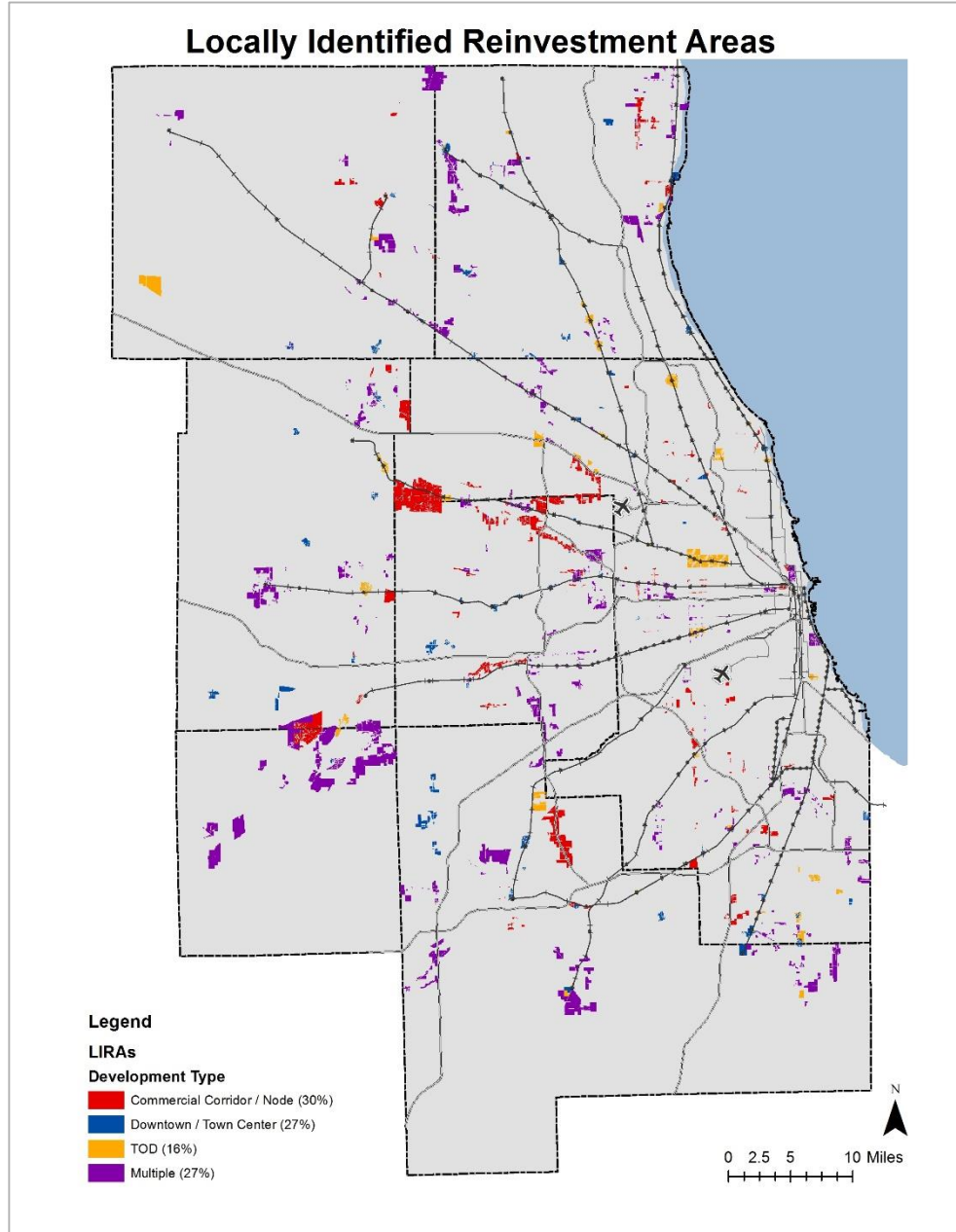
Included Resource Types for Areas without Plans

-  Floodway
-  100-Year Floodplain
-  500-Year Floodplain
-  Wetlands
-  Oaks
-  Protected Land

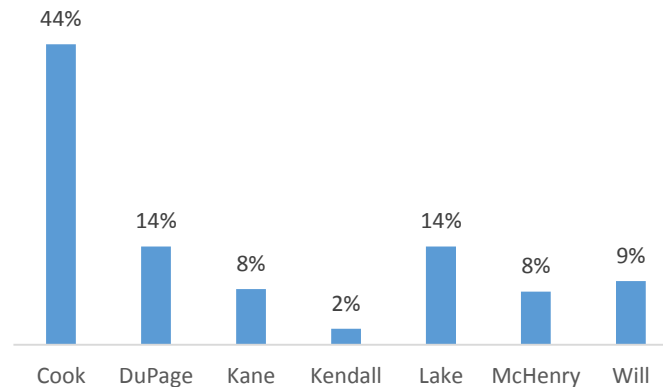
LIRA Layer: Identification Criteria

- Found in a plan adopted within last 10 years
- Plan recommendations relate to a specific, well-defined sub-area
- Reinvestment priorities relate to three basic development types:
 - Commercial Corridors / Nodes
 - Downtowns / Town Centers
 - TODs
 - Multiple (a combination of the above)

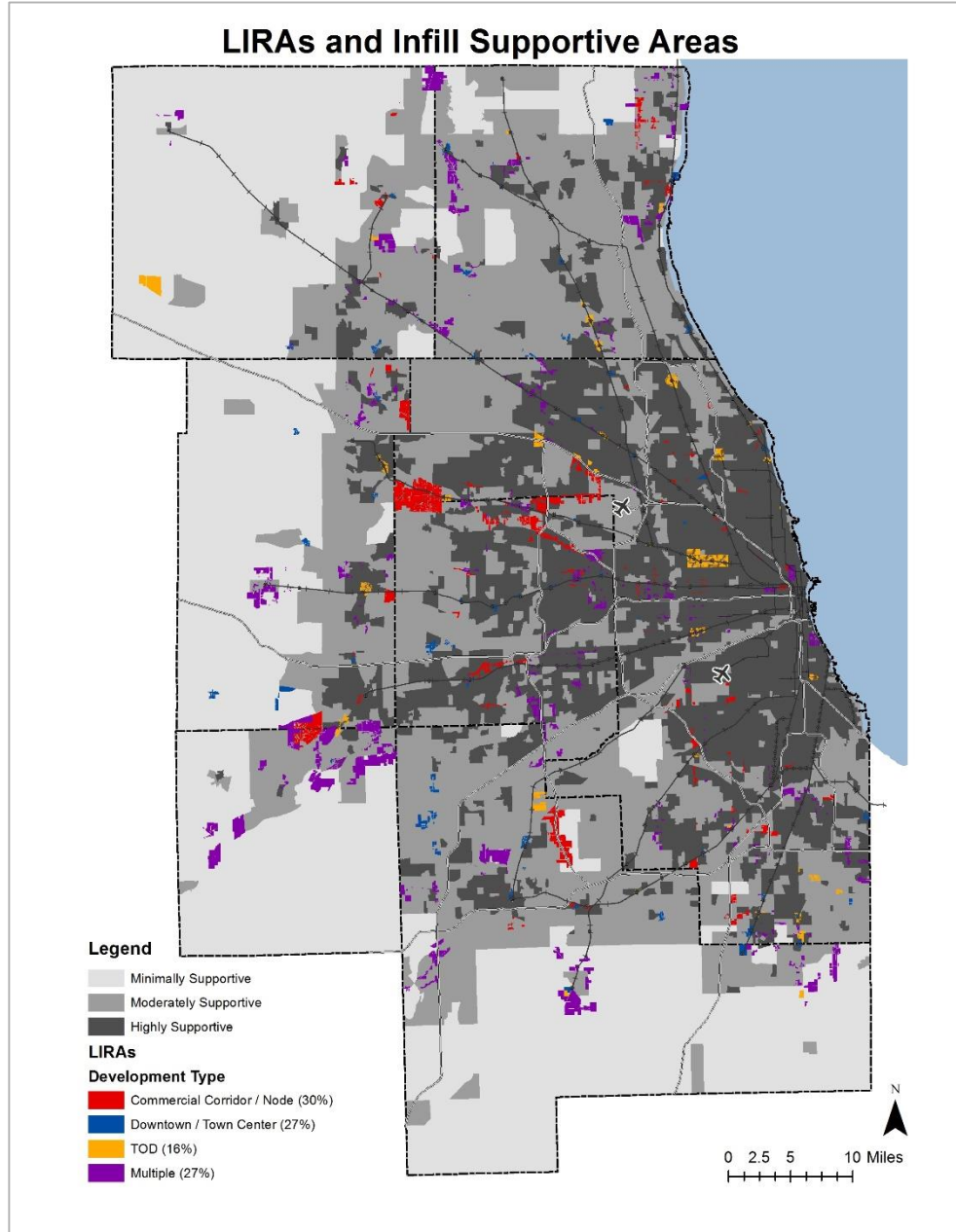
LIRA Layer



- Total of 258 LIRAs identified in 167 municipalities
- Relatively even mix of development types
- Distributed throughout the region, with a majority in Cook County



Potential Applications



- Inform socioeconomic forecast of population and employment, in tandem with infill supportiveness layer
- May be incorporated into evaluation criteria for capital projects
- Help shape ON TO 2050 plan recommendations

Next Steps

- Further develop LIRA layer through closer review of LIRA plan recommendations and existing conditions
- Create web-based LIRA case study library showcasing successful planning and reinvestment initiatives in the region
- Conduct municipal outreach in spring and summer of 2017

Discussion Questions

- Will a LIRA case study library be helpful to local partners?
- How else can CMAP use the LIRA layer to provide guidance to local partners?