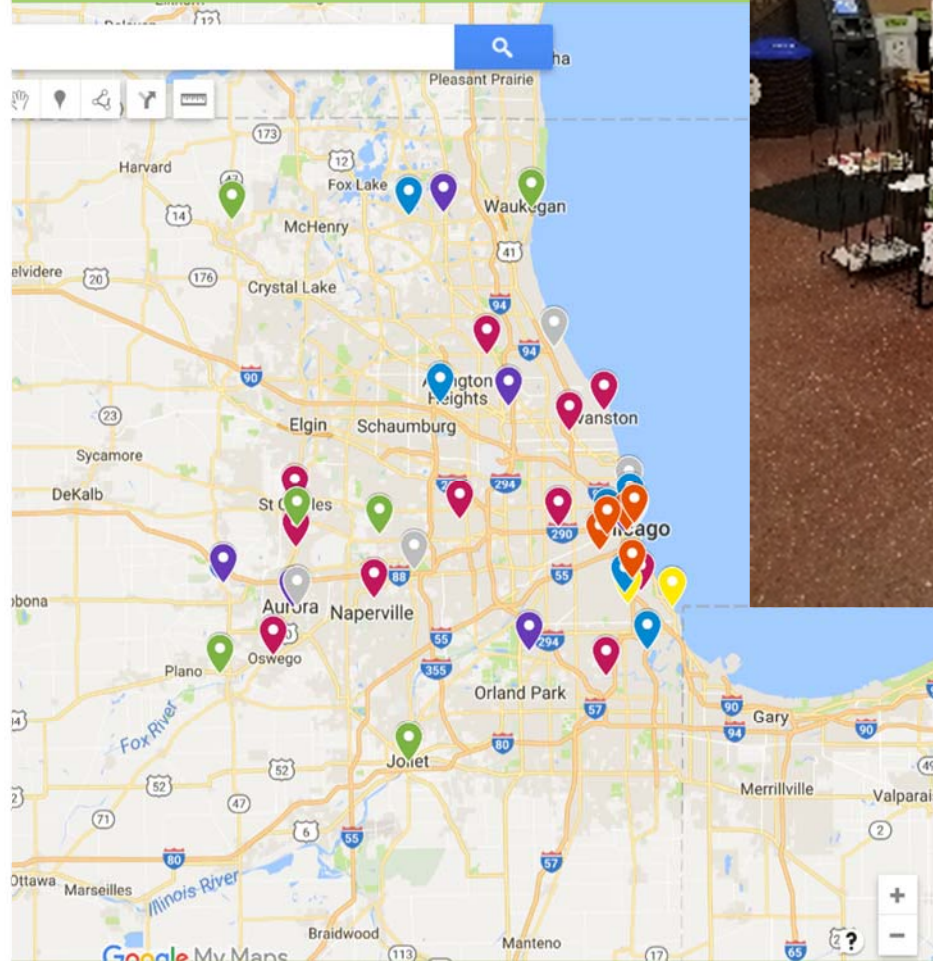


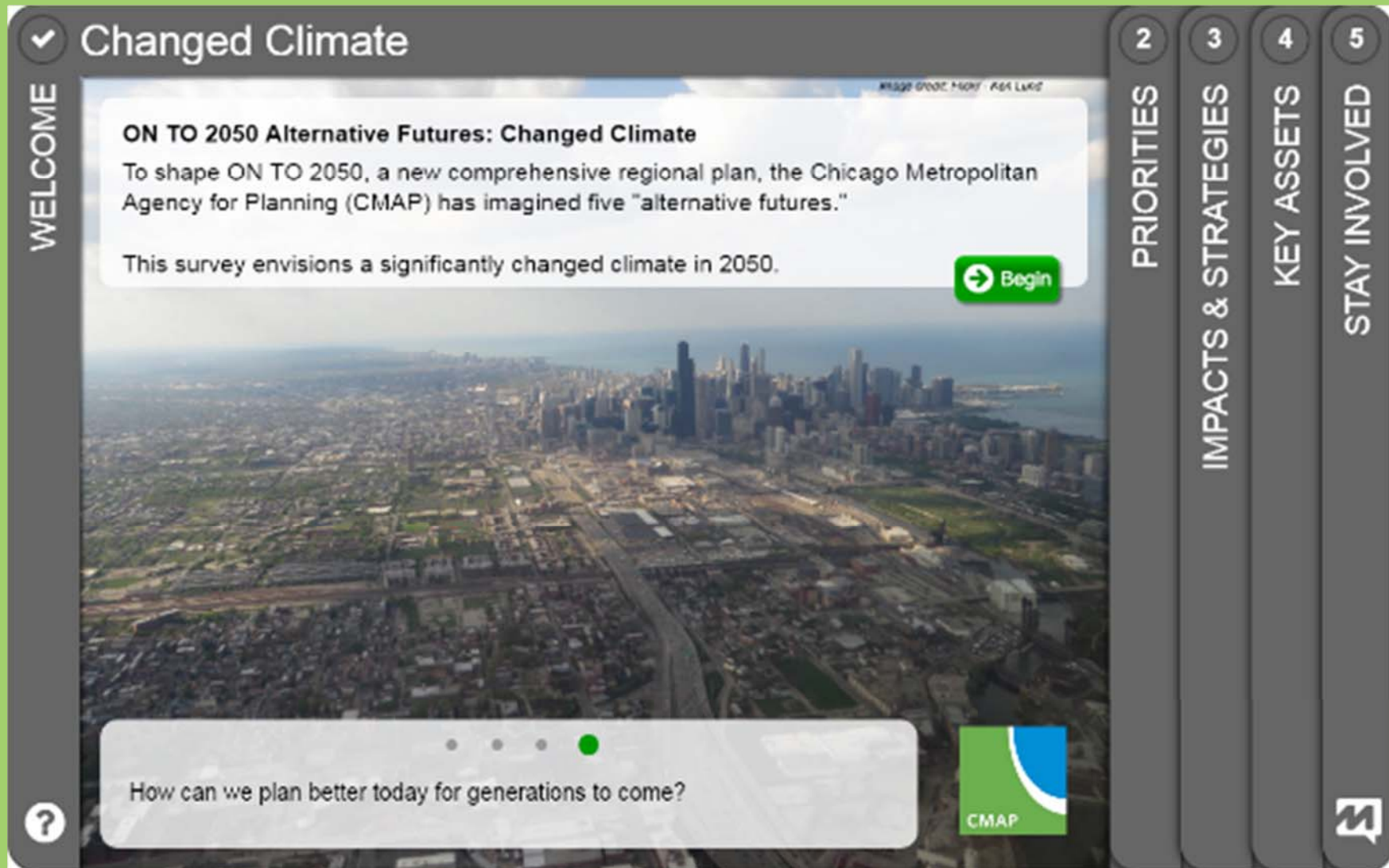
ONTO 2050

Multimodal Public Engagement for Alternative Futures

Kiosks



Online survey (MetroQuest)



Public Workshops



The five alternative futures

- **Changed Climate**
- **Walkable Communities**
- **Innovative Transportation**
- **Constrained Resources**
- **Transformed Economy**

A dramatic, high-contrast image of dark, swirling storm clouds. A bright, ethereal light source, possibly the sun or moon, is partially obscured by the clouds on the left side, creating a strong backlighting effect and illuminating the edges of the cloud formations. The overall color palette is dominated by deep blues, greys, and blacks, with a stark white highlight from the light source.

CHANGED CLIMATE

As climate change intensifies, which impact worries you most in our region?

- 0% A. Harm to life and property from storms, flooding
- 0% B. Insufficient water supply
- 0% C. Threats to regional agriculture, biodiversity
- 0% D. Effect of extreme heat on health
- 0% E. More intense impacts for vulnerable residents
- 0% F. I'm not worried
- 0% G. Other



WALKABLE COMMUNITIES

What are the 3 biggest benefits of more walkable communities?

- 0% **A.** Healthier residents
- 0% **B.** The ability to live car-free
- 0% **C.** More social interaction
- 0% **D.** Lower emissions mean less pollution
- 0% **E.** Transportation costs less
- 0% **F.** More economic development in those places
- 0% **G.** Other



INNOVATIVE TRANSPORTATION

If you had a convenient commute no matter where you lived, where would you choose to live?

- 0% **A.** An urban neighborhood
- 0% **B.** A walkable suburban community
- 0% **C.** A suburban subdivision
- 0% **D.** A small town
- 0% **E.** A rural area
- 0% **F.** Other

A photograph of a large, rusted metal bridge structure, likely a truss bridge, with the text "CONSTRAINED RESOURCES" overlaid in white. The bridge is made of dark, weathered steel with many rivets and bolts. The background shows a bright, hazy sky and some distant structures. The overall tone is industrial and somewhat somber.

CONSTRAINED RESOURCES

What are your top 2 priorities for public funding? (Assume education, public health, and public safety are already priorities.)

- 0% **A.** Transportation
- 0% **B.** Sewer and water systems
- 0% **C.** Flood control
- 0% **D.** Parks and open space
- 0% **E.** Housing
- 0% **F.** Social service programs
- 0% **G.** Other

The image features a collection of glossy, three-dimensional spheres of various sizes and colors, including shades of blue, orange, and dark blue. They are arranged in a dense, overlapping cluster against a plain, light brown background. The spheres have a highly reflective surface, showing highlights and shadows that give them a realistic, polished appearance. Overlaid on the center of this cluster is the text "TRANSFORMED ECONOMY" in a bold, white, sans-serif font.

TRANSFORMED ECONOMY

What does our region need most to enable everyone to succeed in the future economy?

- 0% **A.** Reliable public transit
- 0% **B.** High quality, affordable education
- 0% **C.** Continuing job training
- 0% **D.** More options to work close to home
- 0% **E.** Grow our existing industries
- 0% **F.** Easier access to the internet
- 0% **G.** Other

And more

- **Email us at**
onto2050@cmap.illinois.gov
- **Subscribe to the CMAP Weekly Update**
- **Follow us on Twitter**
@ONTO2050, like us on
Facebook, and share your
#2050BigIdeas
- **Visit cmap.illinois.gov/onto2050/futures**
for links to the videos, surveys

Imagine our Future

Changed Climate

Walkable Communities

Innovative Transportation

Constrained Resources

Transformed Economy

Where do we want to be in 2050?