

ON TO 2050

Plan Indicators Development

Environment & Natural Resources
Committee
November 2nd, 2017

Project Goals

- **Create a set of indicators to quantify goals and measure implementation progress of ON TO 2050**
 - Reevaluate and refine GO TO 2040 indicators
 - Develop new indicators to cover new topic areas
 - Create near-term (2025) and long-term (2050) targets

Project Progress

- Review existing indicators for modification
- Identify potential new indicators
- Determine methodology for new/modified indicators
- **Committee review of Indicator Refinement Memos**

GO TO 2040 Indicators: Keep “As-Is”

- **Acres of Impervious Area**
- **Public Supply Water Demand**
- **Deep Bedrock Aquifer Withdrawals (kindred)**
- **Regional Access to Parks per Person in Acres***
- **Percentage of the Regional Trails Plan Completed***
- **Acres of Land Harvesting Food for Human Consumption**

GO TO 2040 Indicators: Modify

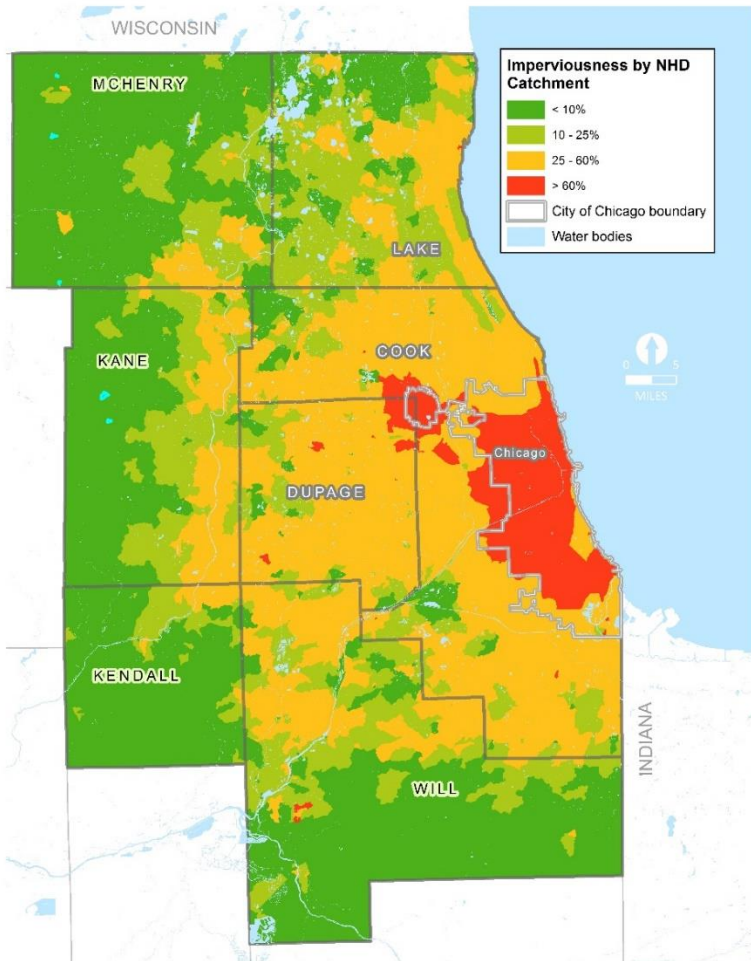
- **Greenhouse Gas Emissions**
- **Lake Michigan Withdrawals (kindred)**
- **Acres of Conservation Open Space**

GO TO 2040 Indicators: Eliminate

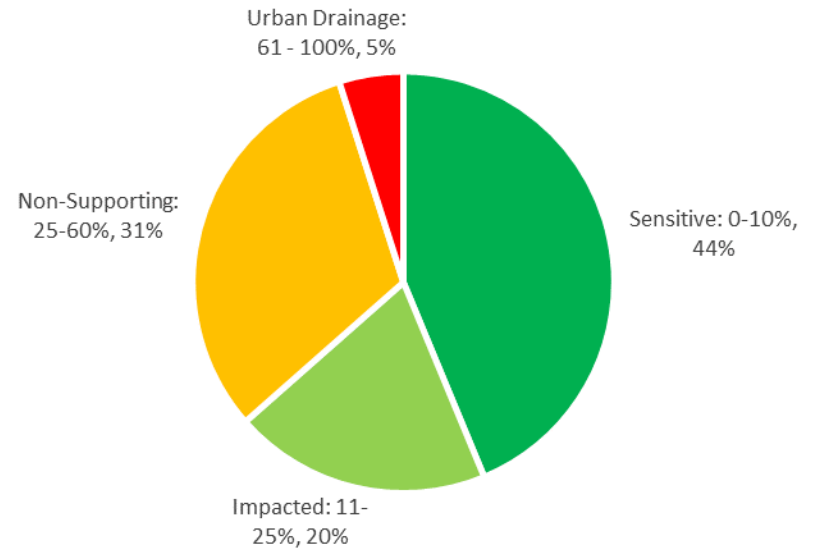
- **Trail Greenway Mileage**
- **Value of Agricultural Products Sold Directly to Individuals for Human Consumption**
- **Percentage of Population Living in Food Deserts**
- **Farmers' Markets in the Region (kindred)**

New ON TO 2050 Indicators

Percent of Region in Sensitive and Impacted Watersheds

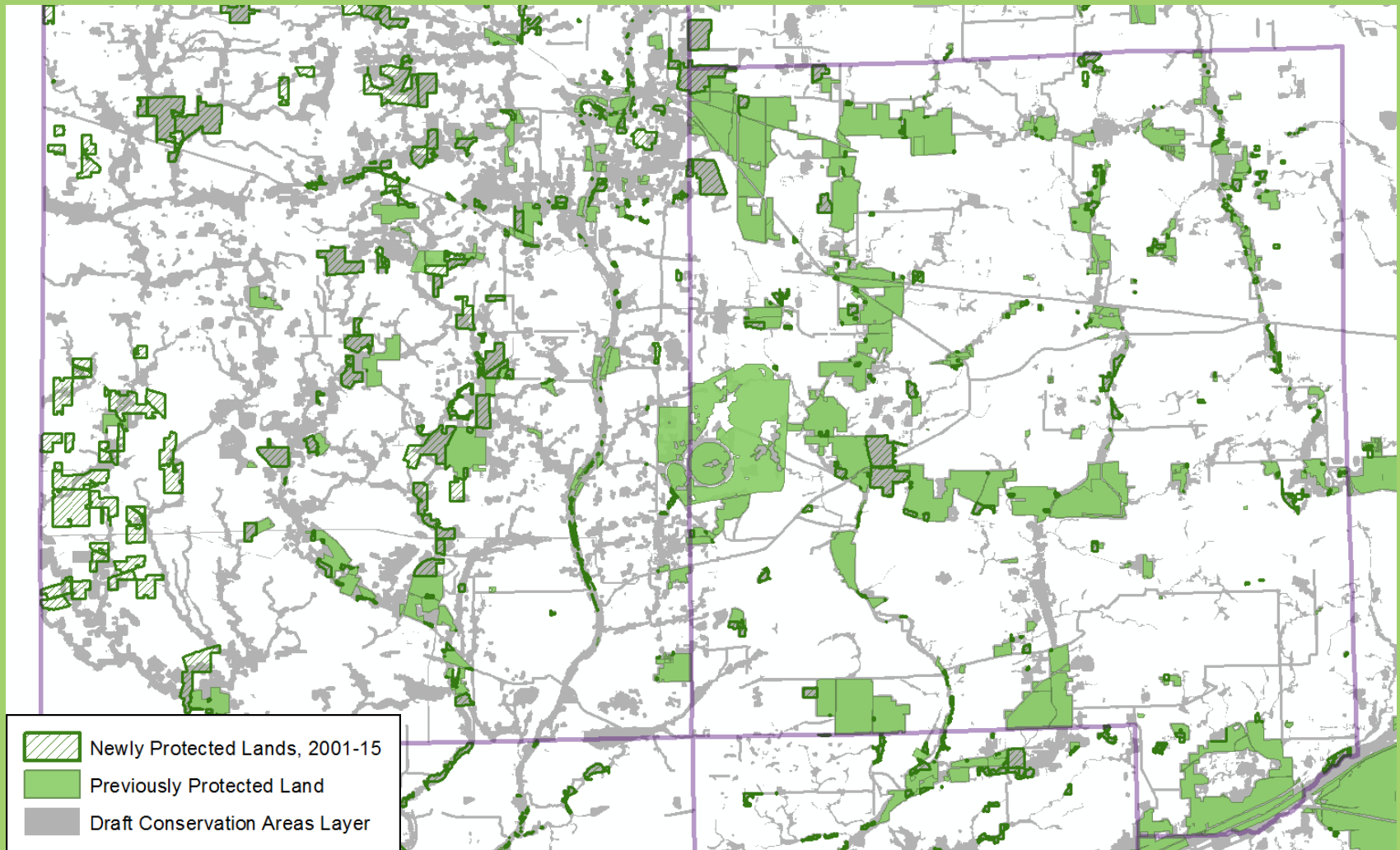


Sources: 2001-2011 National Land Cover Dataset, 2015 Northeastern Illinois Development Database, Illinois Department of Natural Resources, and CMAP analysis of National Hydrography Dataset.



New ON TO 2050 Indicators

Percent of Preserved Open Space within CMAP Conservation Areas Layer (kindred)



Next Steps

- **Adjust indicators as needed, based on committee feedback**
- **Calculate baseline values and set preliminary targets for 2025 and 2050**
- **Committee review of targets (late 2017 / early 2018)**
- **Final memo of *all* proposed ON TO 2050 indicators and targets, for final review by all committees (June 2018)**

Thank You

Noel Peterson

npeterson@cmap.illinois.gov

312.386.8679

Senior Analyst

Chicago Metropolitan Agency for Planning

www.cmap.illinois.gov