

WILL COUNTY
COMMUNITY FRIENDLY
FREIGHT MOBILITY PLAN



CED WILL COUNTY
CENTER FOR
ECONOMIC DEVELOPMENT

**The Will County Community Friendly Freight Mobility Plan
Regional Impacts and Opportunities**

CMAP Freight Committee

March 19, 2018



Major Public – Private Partnership

Sponsors



U.S. Department of Transportation
Federal Highway Administration



Project Participants

Will County Executive
Will County Department of Transportation
Chicago Metropolitan Agency for Planning
Will County Environmental Stakeholder Organizations

Will County Board
Will County Land Use Department
Will County Freight Advisory Council

Key Findings



CED WILL COUNTY
CENTER FOR
ECONOMIC DEVELOPMENT

The Importance of Freight in Will County

WILL COUNTY IS THE LARGEST INLAND PORT IN NORTH AMERICA

OVER **3 Million** CONTAINERS FLOW THROUGH THE PORT ANNUALLY = **\$65 Billion** WORTH OF PRODUCTS



What do Freight Flows in Will County Look Like?

TOTAL ECONOMIC IMPACT OF FREIGHT ACTIVITY IN WILL COUNTY

OVER **106K** Jobs
EARNING **\$5.0** Billion

PRODUCING **\$12.8** Billion in Gross Regional Product

EQUATING TO **\$28.8** Billion in Economic Output

COMPRISING **55%** OF THE COUNTY'S Economy AND **37.6%** Tax Revenue

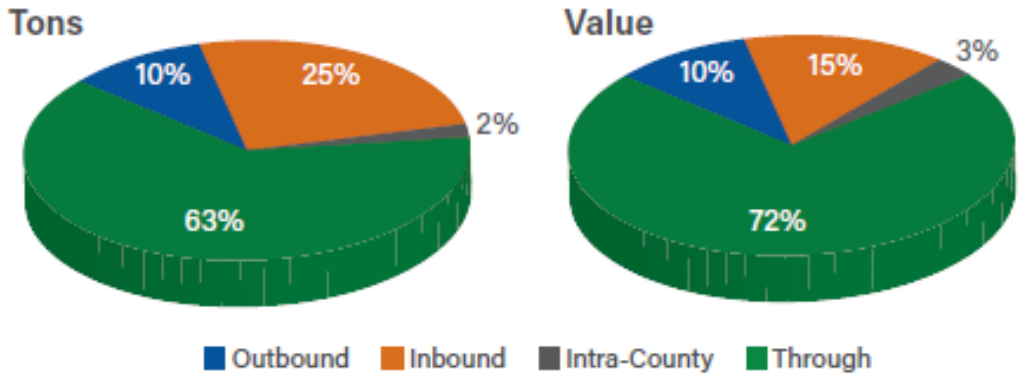
YIELDING **\$916** Million to Local, State, and Federal Coffers

Freight continues to grow with new developments like Amazon adding 6,000 jobs in early 2017

Freight Movement in Will County by Mode, 2015

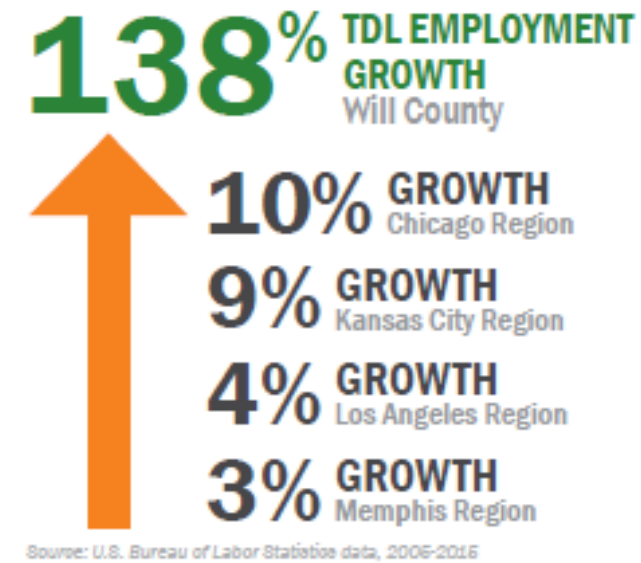
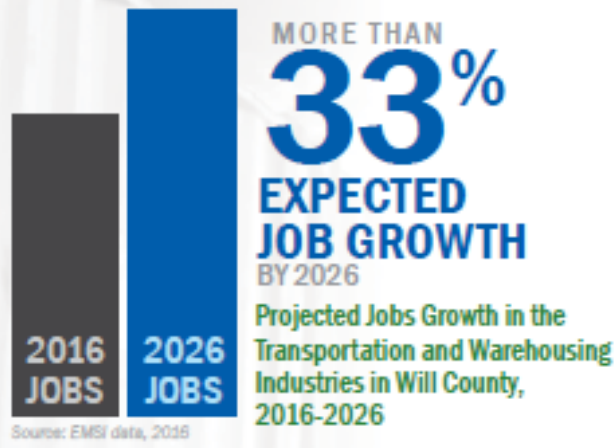
	Truck	Rail	Water	Pipeline
Tonnage (in millions)	152	160	6.6	59.1
Value (in billions)	\$282	\$321	\$3.30	\$15.9
Units (in millions)	11.3	4.6	NA	NA
Value/ton	\$1,852	\$2,008	\$506	\$270

Freight Movement by Direction, 2015



63% OF WILL COUNTY'S FREIGHT MOVEMENT IS THROUGH MOVEMENT

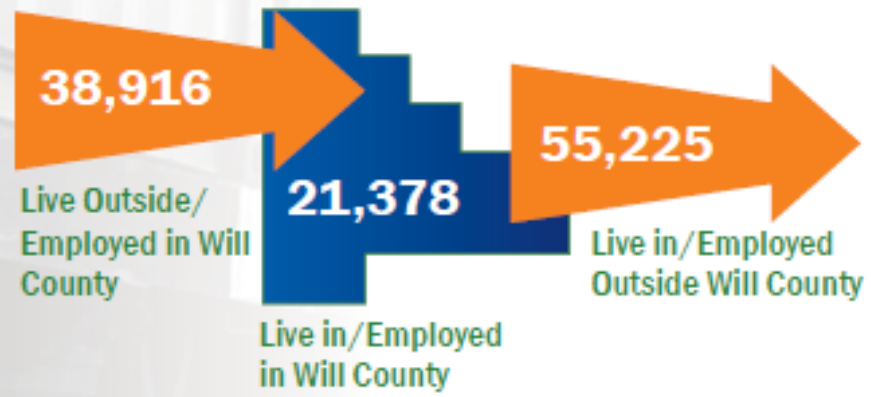
How Important is the Freight Workforce to Will County's Economy?



40% OF TDL WAGES IN WILL COUNTY PAY OVER \$15/HR

Employment Growth since 2005 for Freight Related Industry in Will County and Peer Regions

COMMUTE FLOWS IN TRADE, TRANSPORTATION AND UTILITIES WORKERS IN WILL COUNTY



Will County TDL workers have varying commute patterns. Over 38,000 come from outside Will County, highlighting the need for better mobility options.

Source: Longitudinal Employer Household Dynamics Data, 2014

Key Findings

- 1. Freight is Critical to the Economic Success of Will County.**
- 2. Will County Freight Movement is Critical to the Northeastern Illinois Region, State and Nation.**
- 3. Traditional Planning Approaches Cannot Handle the Pace of Freight Development Experienced in Will County.**
- 4. Freight Volume Growth May Affect Safety and Worsen Existing Bottlenecks and Operational Issues.**

Key Findings

- 5. Continued Growth Without Planning and New Transportation Investments may Impact Will County's Economic Competitiveness and Quality of Life.**
- 6. Funding and Institutional Issues Make it Difficult to Invest in Freight Projects.**
- 7. Will County Needs Regional, State, and National Funding Support.**

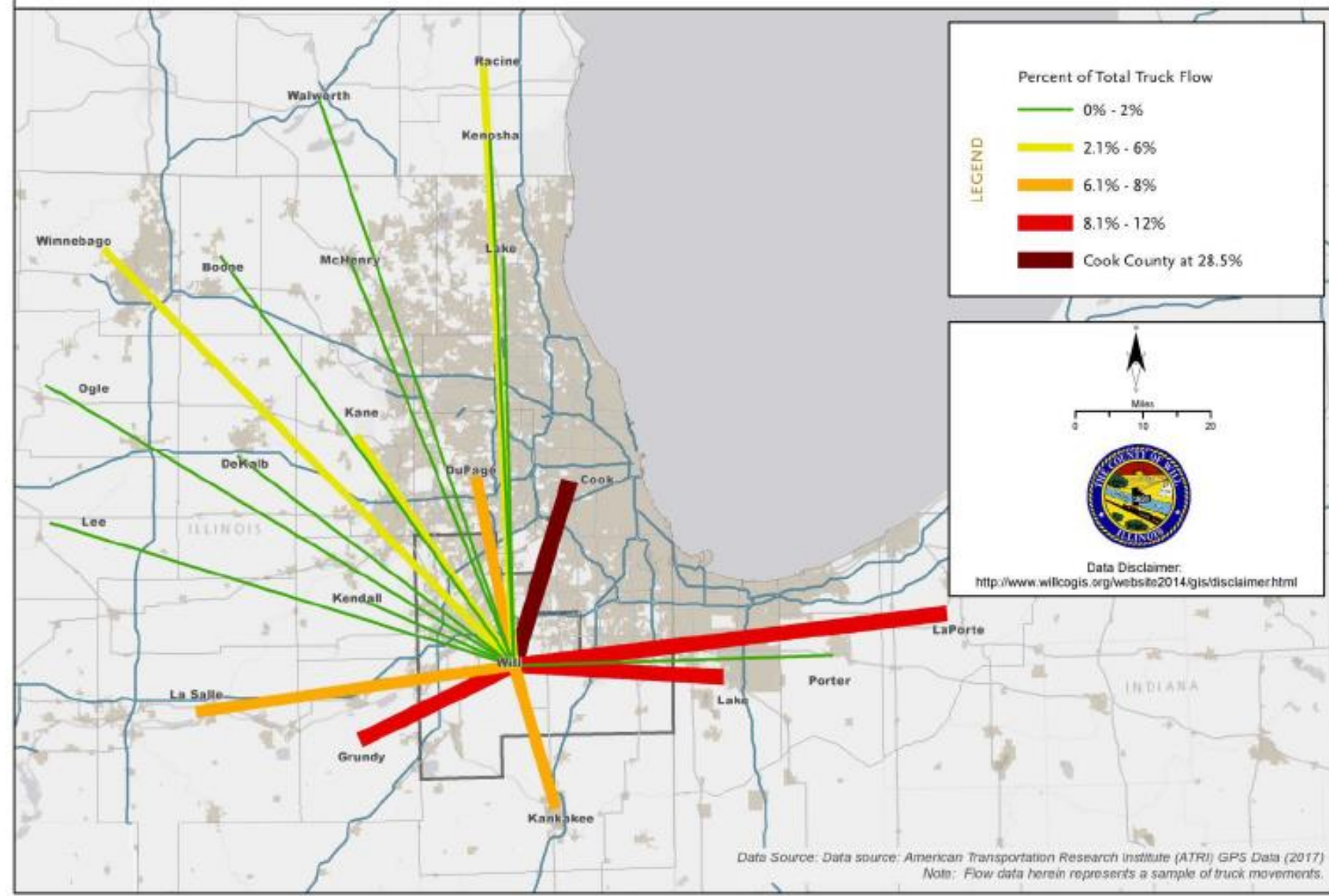
Select Analysis



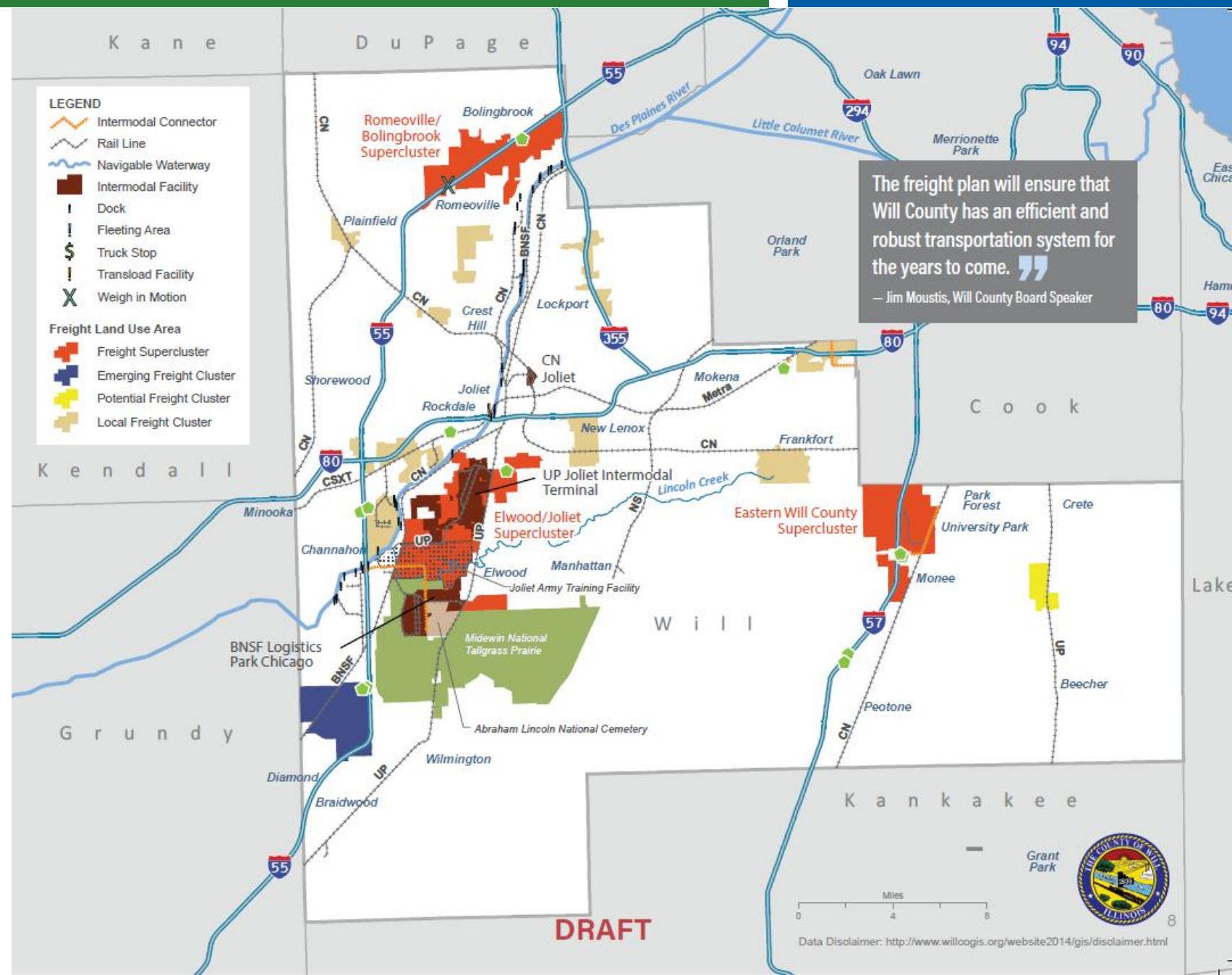
CED WILL COUNTY
CENTER FOR
ECONOMIC DEVELOPMENT

Regional Freight Movements

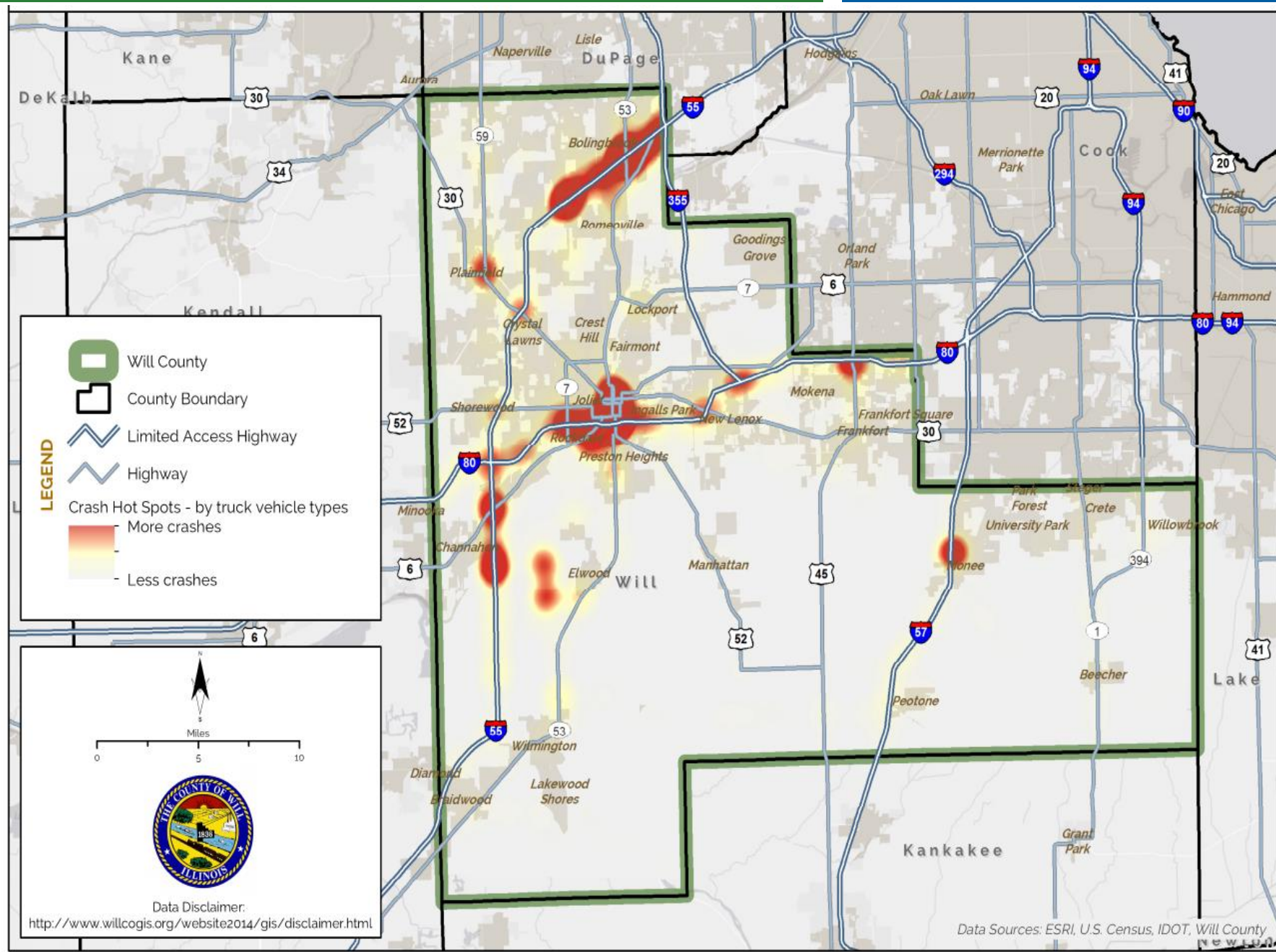
Will County Community Friendly Freight Plan
Inter-County Truck Movements within the Chicago Region – Based on ATRI GPS Data



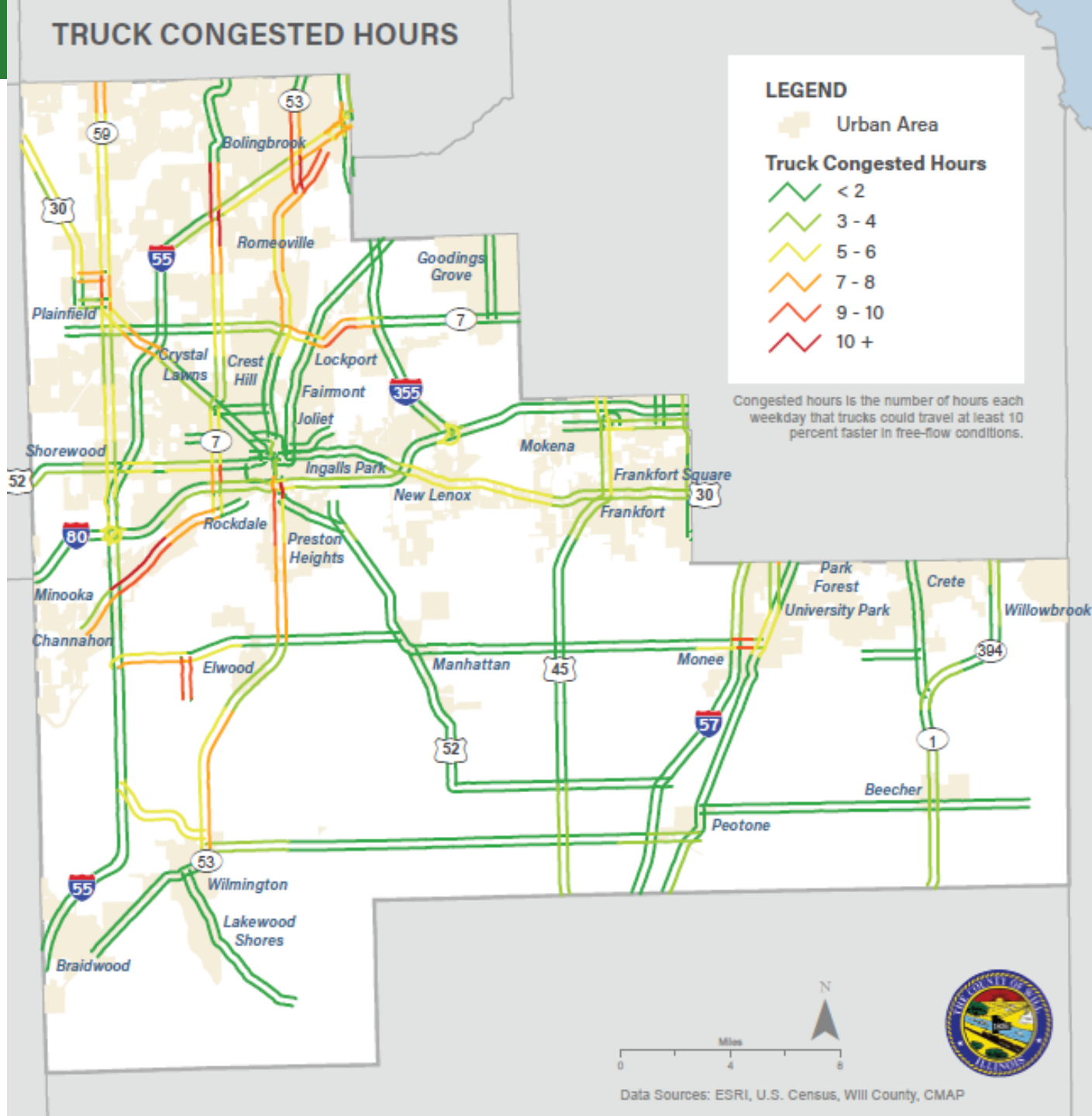
Freight Assets and Clusters



Crash Hot Spots



Truck Congested Hours



Recommendations



CED WILL COUNTY
CENTER FOR
ECONOMIC DEVELOPMENT



**Plan
Recommendations**

- **Implement Investment Priorities identified in the Plan.**
- **Improve coordination of overweight/oversize permitting between Jurisdictions.**
- **Expand data collection and modeling, with focus on freight clusters and corridors.**
- **Expand East-West highway connectivity to reduce traffic on local roads.**
- **Increase air cargo capacity by continuing to support the South Suburban Airport**

Plan Recommendations

- **Develop freight workforce initiatives through partnerships with employers.**
- **Increase workforce mobility to job centers using transit hubs and increased bus service.**
- **Develop and communicate a transparent freight network using designated truck routes.**
- **Coordinate transportation and land use planning throughout the County.**

Key Freight Projects



CED WILL COUNTY
CENTER FOR
ECONOMIC DEVELOPMENT

Key Freight Projects

- **25 out of 91 projects evaluated classified as top tier of critical projects**
- **Critical for improving freight movement and quality of life**
- **Many are of national, state, and regional significance and ripe for federal and state investment**

Projects evaluated using:

- Preservation Enhancement
- Safety
- Mobility
- Economic Competitiveness
- Community Sensitivity
- Environmental Sensitivity.

Investments to Improve the National Freight Network

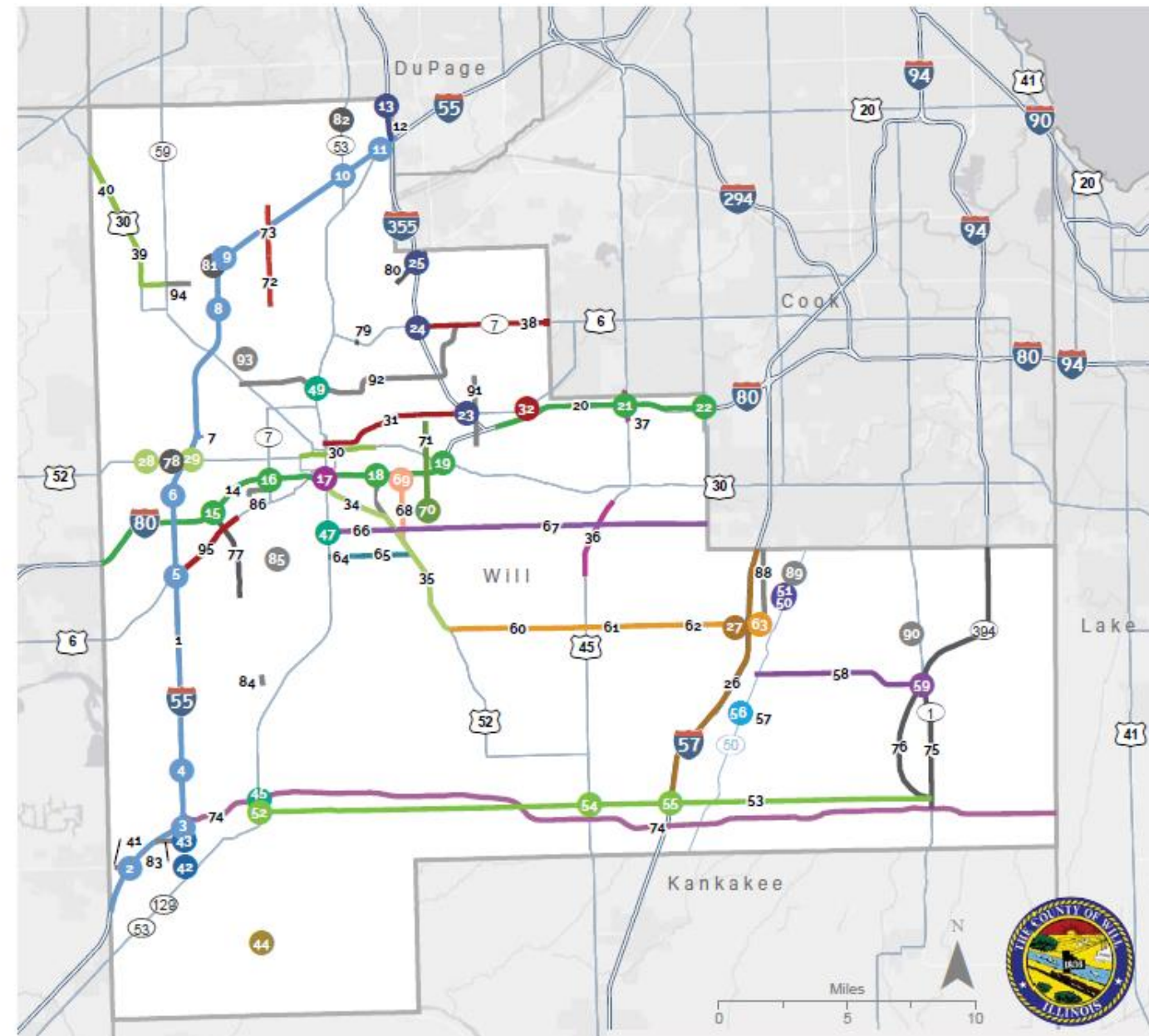
- **I-80 Add Lanes, Bridge Reconstruction, Interchanges Reconstruction:**
 - Ridge Road to US 30 add lanes
 - Houbolt Road interchange reconstruction
 - Des Plaines River bridges and IL 53 interchange reconstruction
 - Briggs St. interchange reconstruction
 - US 30 interchange reconstruction
- **I-55 and I-80 interchange reconstruction**
- **I-55 Add Lanes, Bridge Reconstruction, Interchanges Reconstruction**
 - I-55 from I-80 to Route 129 add lanes
 - Des Plaines River bridges reconstruction
 - Lorenzo Road/Route 129 interchanges reconstruction
- **I-55 and Weber Road interchange reconstruction**



Key Freight Projects

ALL FREIGHT RELATED PROJECTS BY CORRIDOR

- LEGEND**
- I-80
 - I-53/I-80
 - I-57
 - I-55
 - I-355
 - U.S. 6
 - U.S. 52
 - U.S. 45
 - U.S. 30
 - IL 50
 - IL 129
 - IL 113
 - Wilmington-Peotone Road
 - Weber Road
 - South Suburban Airport Acces
 - Schweitzer Road
 - Pauling-Goodenow Road
 - Manhattan-Monee Road
 - Laraway Road
 - Gougar Road
 - Cherry Hill Road
 - Illiana Corridor
 - Other State Projects
 - Other County/Local/Private Projects



Data Sources: ESRI, U.S. Census, IDOT, Will County, ATRI
 Data Disclaimer: <http://www.willogis.org/website2014/gis/disclaimer.html>

Plan Implementation



CED WILL COUNTY
CENTER FOR
ECONOMIC DEVELOPMENT



Plan Implementation

8 Action Categories – 50+ Action Items

1. Will County Advocacy
2. Community Collaboration
3. Community Resource Center
4. Private sector led Industry Center
5. Intergovernmental Outreach
6. Land Use Strategy
7. Project Prioritization Tool
8. Project Planning, Programming and Implementation

Plan Implementation: Current Action

Current Focus

1. Will County Advocacy
2. Community Collaboration
 - County-wide integrated truck route network
 - Uniform OSOW application and permit site
3. Private sector led Industry Center
 - Workforce Action Plan
4. Intergovernmental Outreach

Plan Implementation: Advocacy

Will County Advocacy

- ✓ USDOT
- ✓ Congressional delegation
- ✓ Legislative delegation
- ✓ IDOT
- ✓ Tollway
- ✓ Northeast Illinois County Board Chairs
- ✓ CMAP staff
- ✓ CMAP Policy Committee
- ✓ Cook County
- ✓ Will County Governmental League
- ✓ Local governments in Will County

Plan Implementation: Community Collaboration

- County-wide Integrated Truck Route
 - ✓ Kicked off project
 - ✓ Met with Townships
 - ✓ Piloting in Eastern Will County
- OSOW Permitting
 - ✓ Will County adopting Oxcart
 - ✓ Discussing integration of Oxcart and IDOT system
 - ✓ Promote to other jurisdictions

Plan Implementation: Industry-led Center

- Planning meeting held
 - ✓ Kicked off project
 - ✓ Met with Educators/Trainers/Workforce Investment Board/Transit
 - ✓ Developing Mission, Goals, Strategies

**More
Information**

www.willcountyfreight.org

WILL COUNTY
COMMUNITY FRIENDLY
FREIGHT MOBILITY PLAN



CED WILL COUNTY
CENTER FOR
ECONOMIC DEVELOPMENT

THANK YOU