

Chicago O'Hare International Airport



RAHM EMANUEL, MAYOR
GINGER S. EVANS, COMMISSIONER

Update to CMAP Freight Committee
May 21, 2018

CONTACT: ADAM ROD, CDA PLANNING
773-894-6907 OR AROD@OHARE.COM

CHICAGO IS A CENTER OF COMMERCE

- Strong DNA for business and transportation thanks to central geography and massive infrastructure
- Waterways first → Then handling 50%+ of nation's rail freight → Airport system built around this legacy
- Today nearly 40% of U.S. market within a one day truck drive of Chicago → I-55, I-57, I-80, I-88, I-90, I-94

U.S. MANUFACTURING PLANTS
AND DISTRIBUTION CENTERS



U.S. RAIL FREIGHT TRAFFIC INTENSITY



CHICAGO DEPARTMENT OF AVIATION



Runs both O'Hare and Midway International Airports:

- 50,000 employees → worth \$50B/yr to economy
- AA/UA/WN hubs → 100M+ pax and 1M+ flights/yr

GLOBAL CARGO HUB AT O'HARE



- 1.8M+ tonnes of cargo handled annually (record levels now)
- #6* in the Americas and top 20 in world in by tonnage (ACI rankings)
- #1 cargo airport in Americas by value (\$190B in imports/exports per yr)
- Only LA Port, NJ/NY Port, Laredo Bridge process more cargo in value
- 2M SF airside facilities (4M SF total) with ramp parking for about 40 jumbo freighters

O'HARE IS A GLOBAL TRADE NEXUS

- Air cargo carries something like 1% of world trade by volume, but it represents by far the most valuable, pressing, and leading goods that drive a metropolitan or regional economy
- About 30% of O'Hare cargo by value are exports:
 - Top export is medical equipment and medicines (about 35%)
- About 70% of O'Hare cargo by value are imports:
 - Top import is electronic goods and supplies (about 30%)
- Flagship cargo gateway to U.S. for several overseas carriers
- Approximately 30% of all O'Hare trade by value is with China
- Large hinterland to west and south of O'Hare directly related to air trade
 - Distribution centers
 - Manufacturers
 - Freight forwarders
 - Trucking companies
 - Importers/exporters
- “Edge city” of Rosemont based on O'Hare location

STAY COMPETITIVE AND ABLE TO GROW

Major investments in O'Hare's infrastructure:

- O'Hare Modernization Program and O'Hare 21
- New Cargo Campus (Northeast Airfield)



O'Hare Modernization Program

9L-27R
Completed 2008

NATCT
Completed 2008

9C-27C
Anticipated by 2020

9R-27L Extension
Anticipated by 2021

Taxiway LL

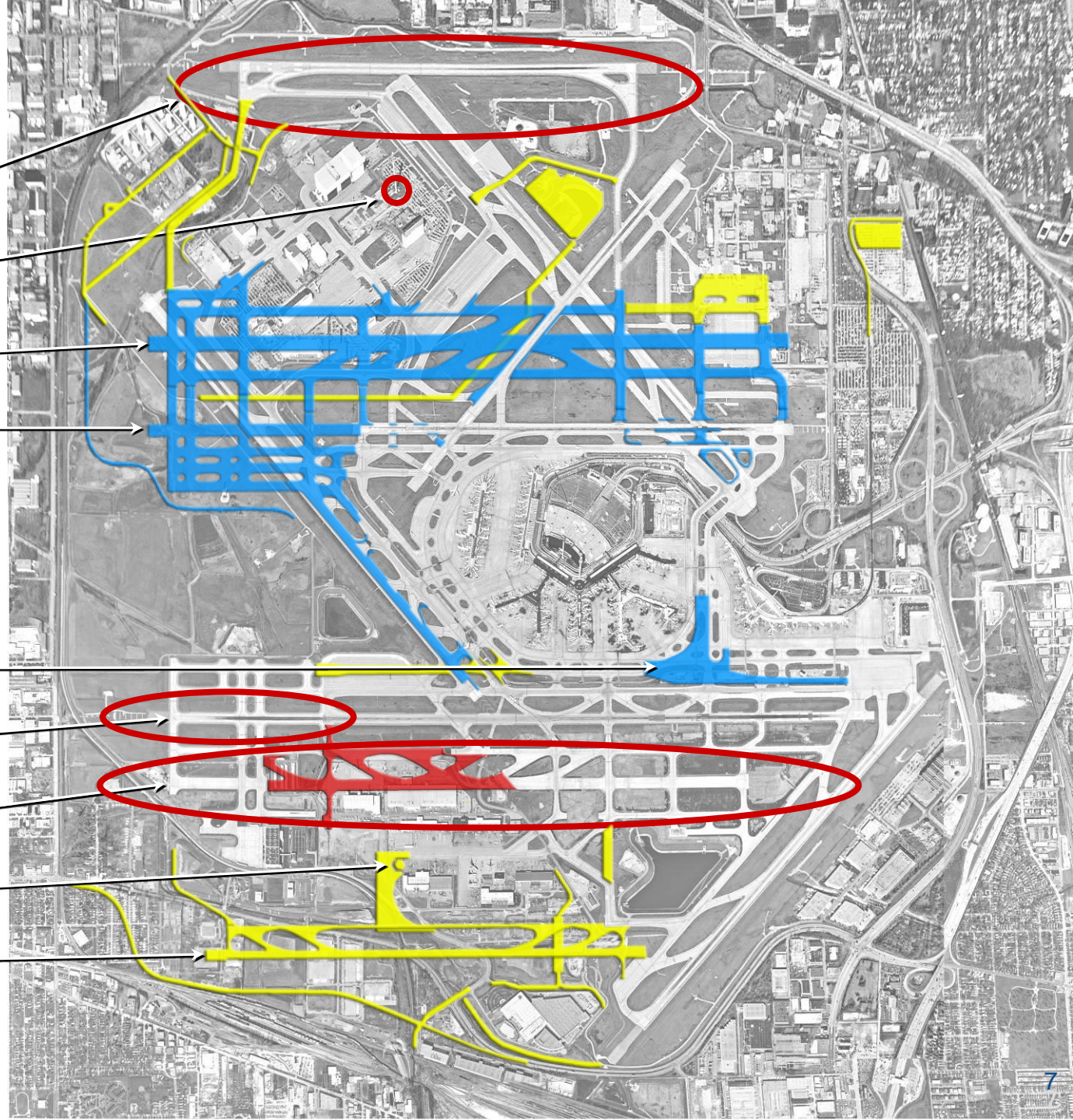
10L-28R Extension
Completed 2008

10C-28C
Completed 2013

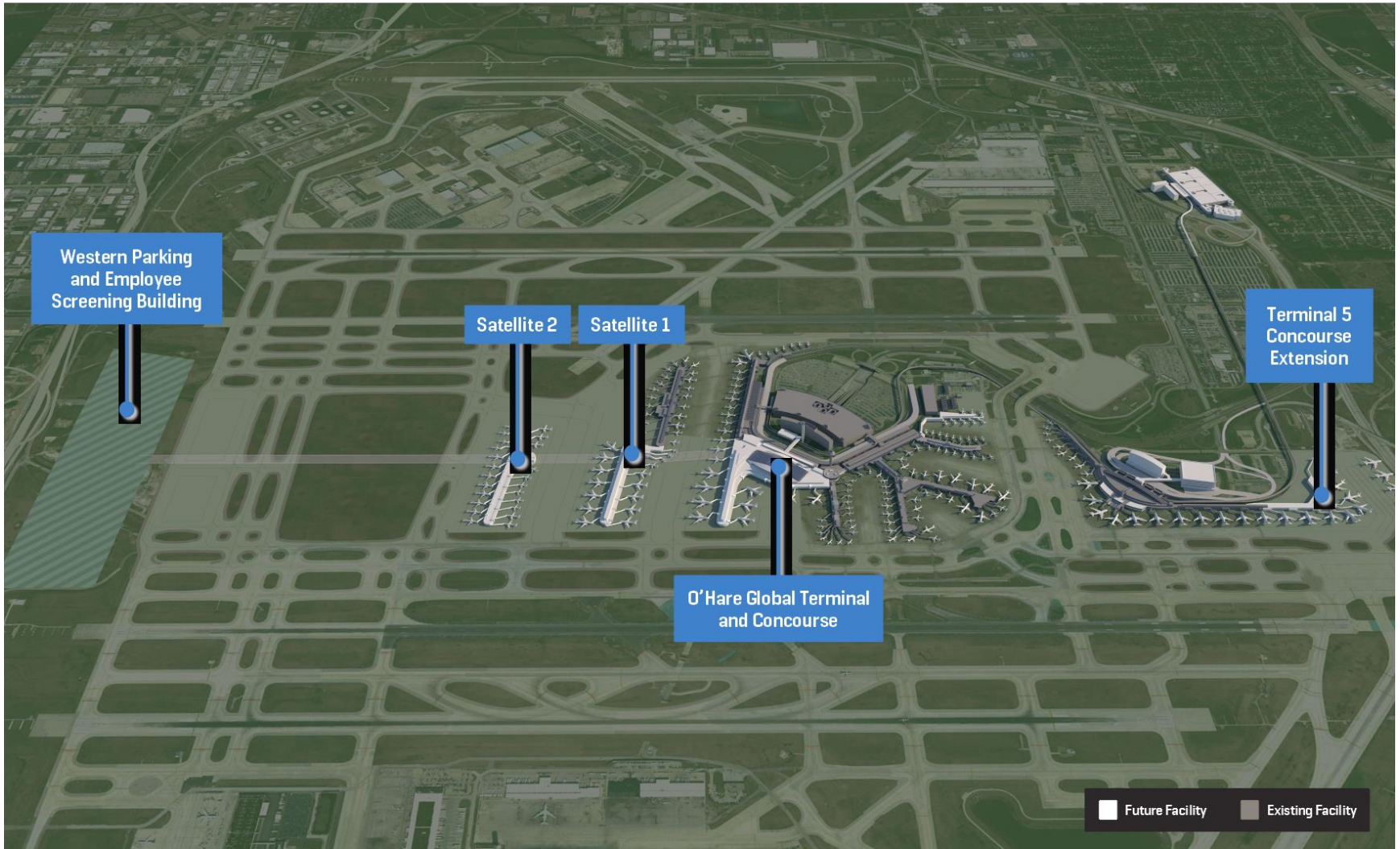
SATCT
Completed 2015

10R-28L
Completed 2015

- Phase 1
- Completion A
- Completion B



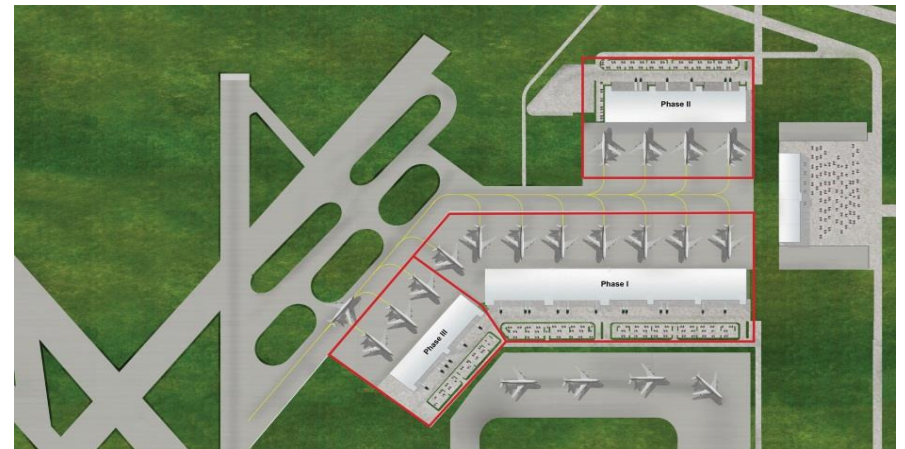
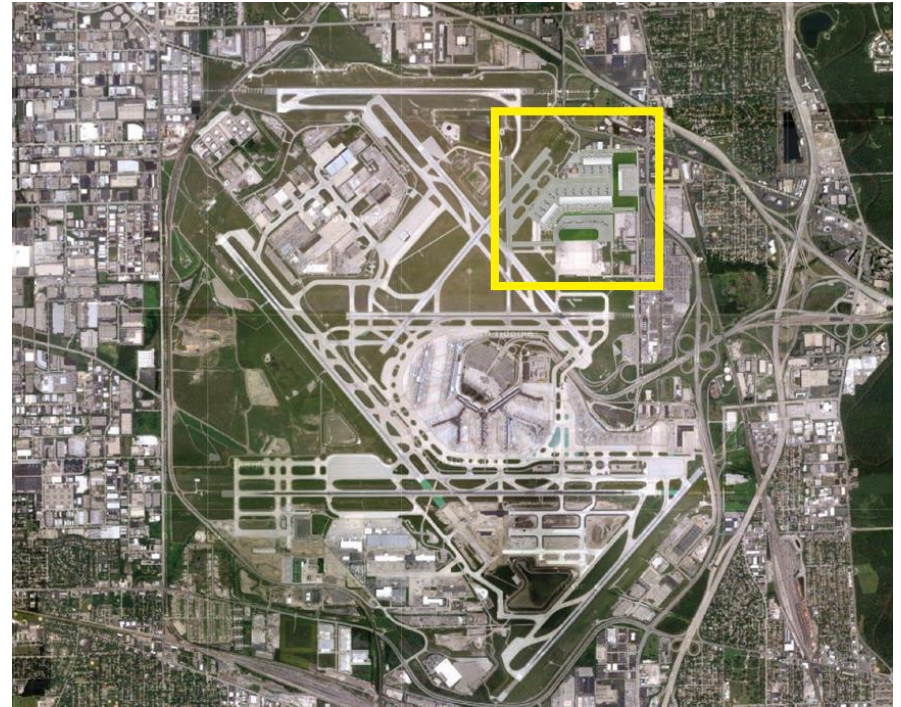
OVERALL SITE PLAN



O'HARE 21 TERMINAL AREA PLAN PHASE I

O'HARE NORTHEAST CARGO CAMPUS

- Goal was 50% more capacity
- Site is old military area
- Developer is Aeroterm (RFP)
- \$200M and 1,000+ jobs
- 65 acres with 800,000 SF of facility space
- Can handle all B747-8F
- Access to I-90, I-190, I-294
- LEED/SAM + close to amenities for workers
- Phases I and II complete
- Phase III announced for 2020





ONGOING PLANNING ISSUES

- Truck routes/congestion and staging (physical and new technology)
- Job training + continued investment and economic opportunities
- E-commerce is the future (only the very beginning)
- Safety and security (while keeping efficiency)
- Further air cargo development (more new space)
- Additional specialized facilities

THANK YOU! QUESTIONS?