

***National Highway System Intermodal Connectors
Freight Committee Update – May 2018***

May, 2018

National Highway System

What is the National Highway System (NHS)?

- Roadways important to the nation's economy, defense, and mobility
- Consists of:
 - Interstate System
 - Freeways and Expressways
 - Other Principal Arterials
 - STRAHNET (Defense access) and STRAHNET connectors
 - Intermodal Connectors
- MAP-21 added all principal arterials to the NHS.
- Eligible for some federal funding programs.

Why Do We Update the NHS?

Why Update the NHS?

- National performance measures and targets are based on the NHS.
- Likewise, some ON TO 2050 regional indicators and targets are based on the NHS.
- Measuring NHS conditions costs money.
- NHS designation brings federal design controls. Exceptions to the designs require IDOT approval, even if a project is locally financed.
- NHS designation brings other requirements, such as billboard regulations.
- Functional classifications (particularly for other principal arterials) change.
- Traffic conditions change.
- But not because of funding opportunities.

- IDOT approved changes in functional classification in 2016, reviewed by the counties and the Councils of Mayors.
- Many of the functional classification changes resulted from a close look at other principal arterials, which had not been closely reviewed before Congress added them to the NHS.
- Many of this year's NHS changes follow directly from the changes in functional classification.
- A few other changes resulted from changes on the ground (e.g., IL 390).

2018 NHS Intermodal Connector Update

IDOT and CMAP also closely reviewed the status of NHS intermodal connectors.

- Some of the changes are technical (fixing prior recordkeeping errors).
- Changes in connectivity.
- Better information regarding truck routing (counts, review of ATRI data).
- Industry changes, such as new or closed facilities.

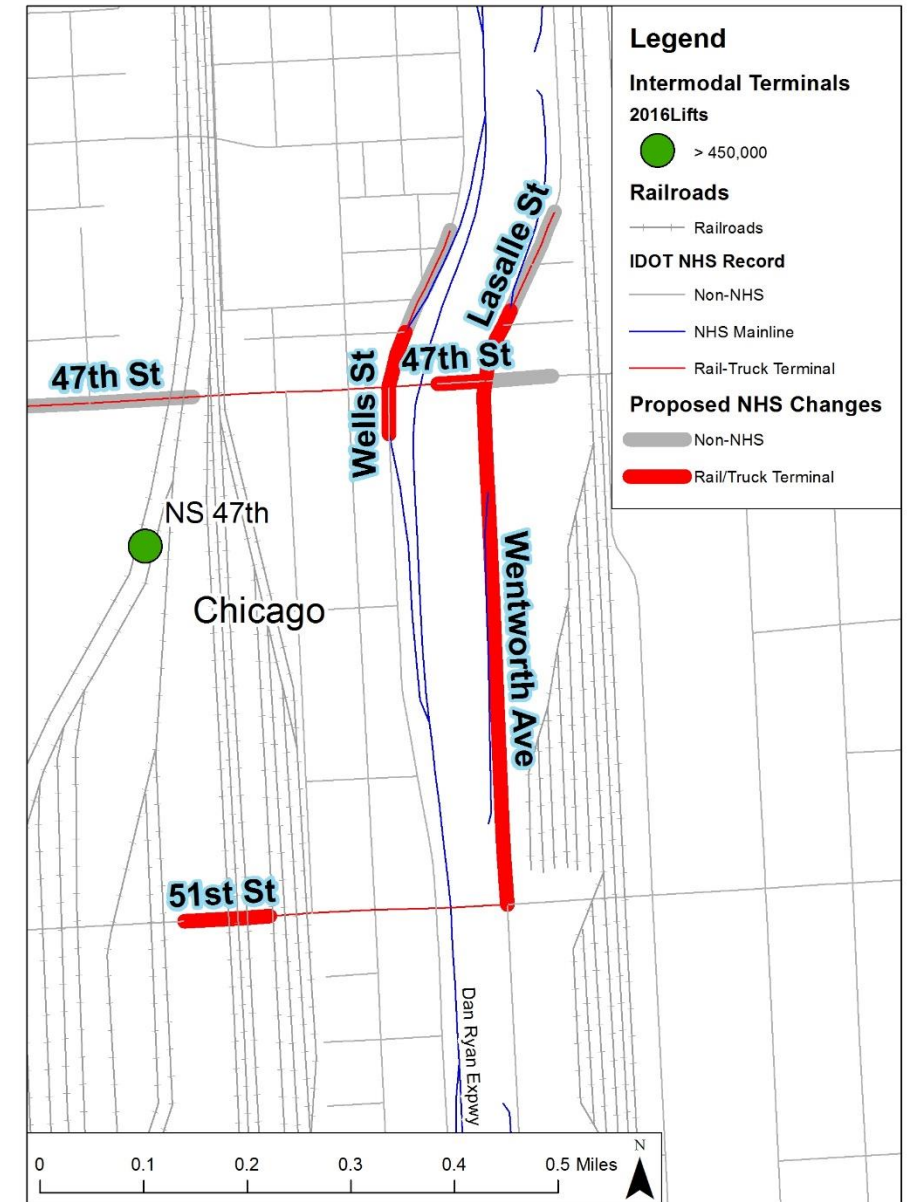
The Freight Committee was originally formed as the Intermodal Advisory Task Force to develop NHS intermodal connectors, so we are bringing changes to the Freight Committee for discussion.

NHS Intermodal Connectors

NS 47th Street Terminal

- Reconstruction of I-90/94 changed connectivity.
- NHS designations reviewed to match field conditions

NHS Changes - 47th

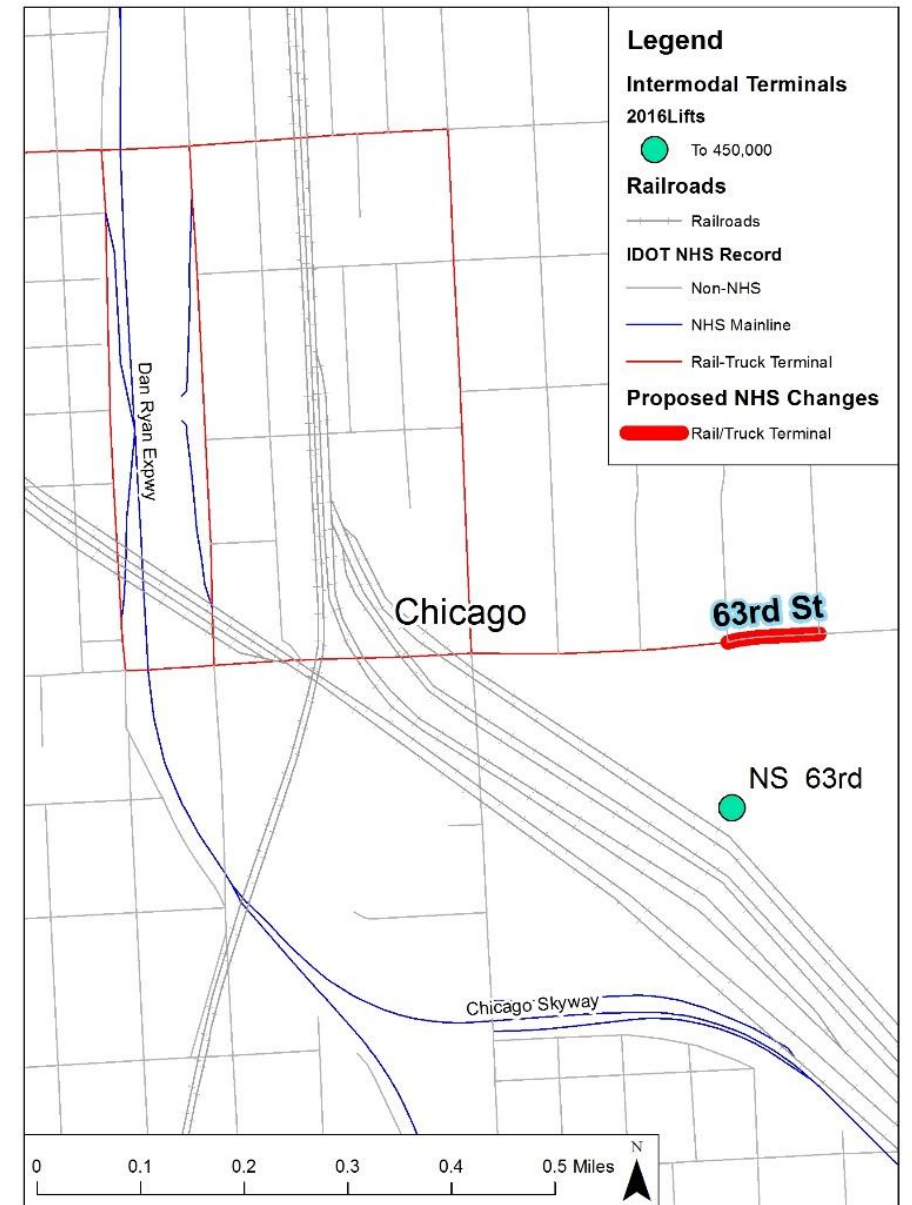


NHS Intermodal Connectors

NS 63rd Street Terminal

- NHS extended to the location of the new gate.

NHS Changes - 63rd

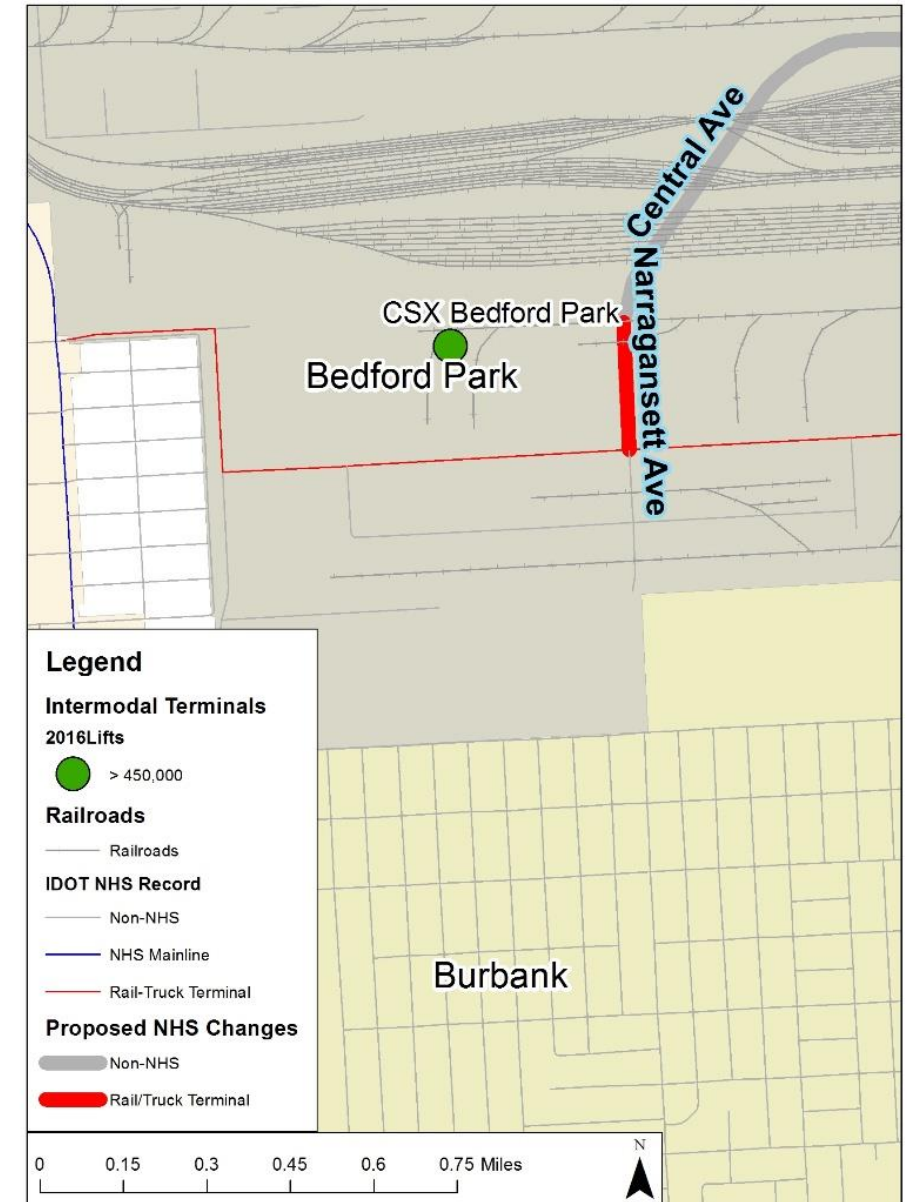


NHS Intermodal Connectors

CSX Bedford Park

- Central-Narragansett Connector (a former planned mainline NHS route) was de-designated.
- Narragansett Ave was designated as an intermodal connector from 73rd to the CSX gate.

NHS Changes - Bedford Park



NHS Intermodal Connectors

CPRS Bensenville and Schiller Park

- Schiller Park terminal has been closed. Lawrence Ave will be removed from the NHS.
- Truck traffic from Bensenville terminal was reviewed. Substantial portions of the terminal truck traffic were routing along Franklin Ave and County Line Rd. These are being added to the NHS.

NHS Changes - Bensenville/Schiller Park

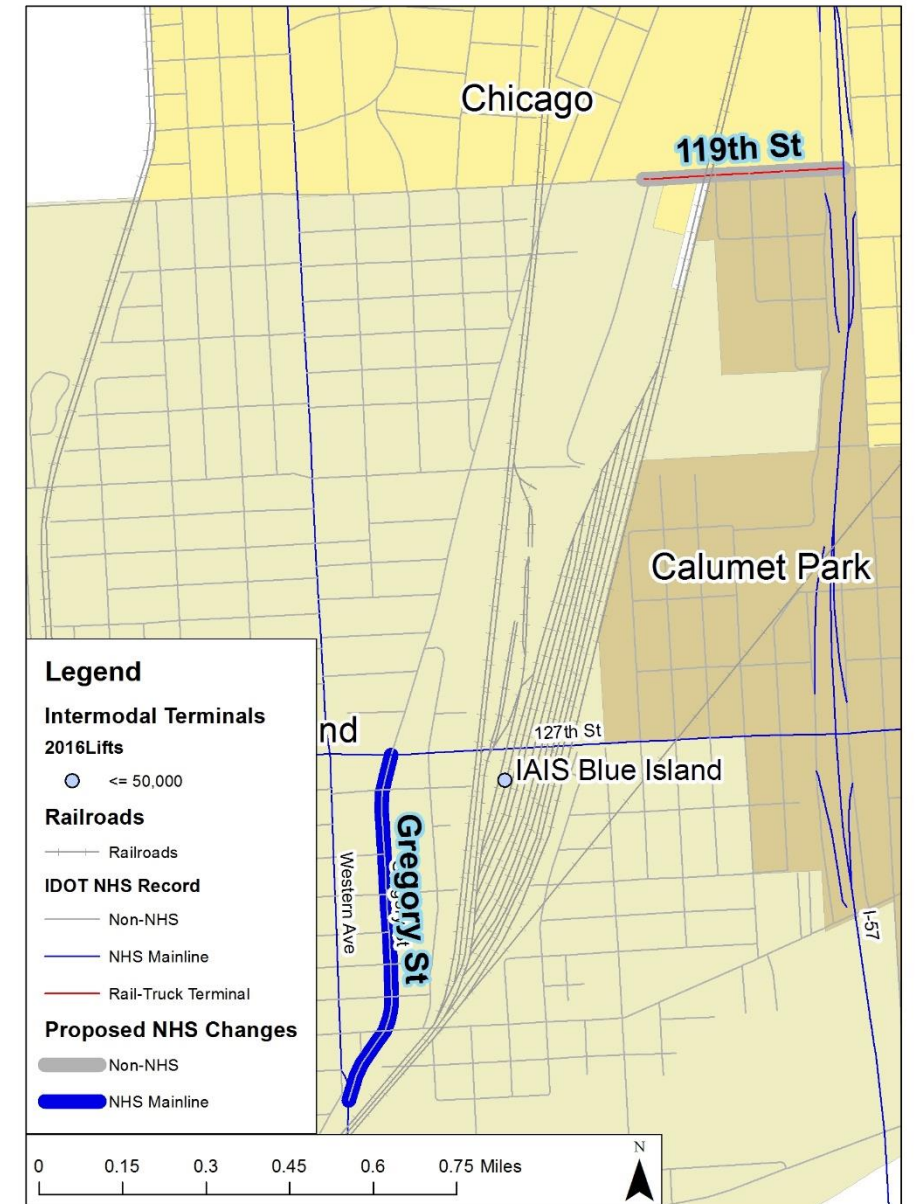


NHS Intermodal Connectors

IAIS Blue Island

- Terminal volumes are too low to qualify for intermodal connectors. 119th Street is being removed from the NHS.

NHS Changes - Blue Island

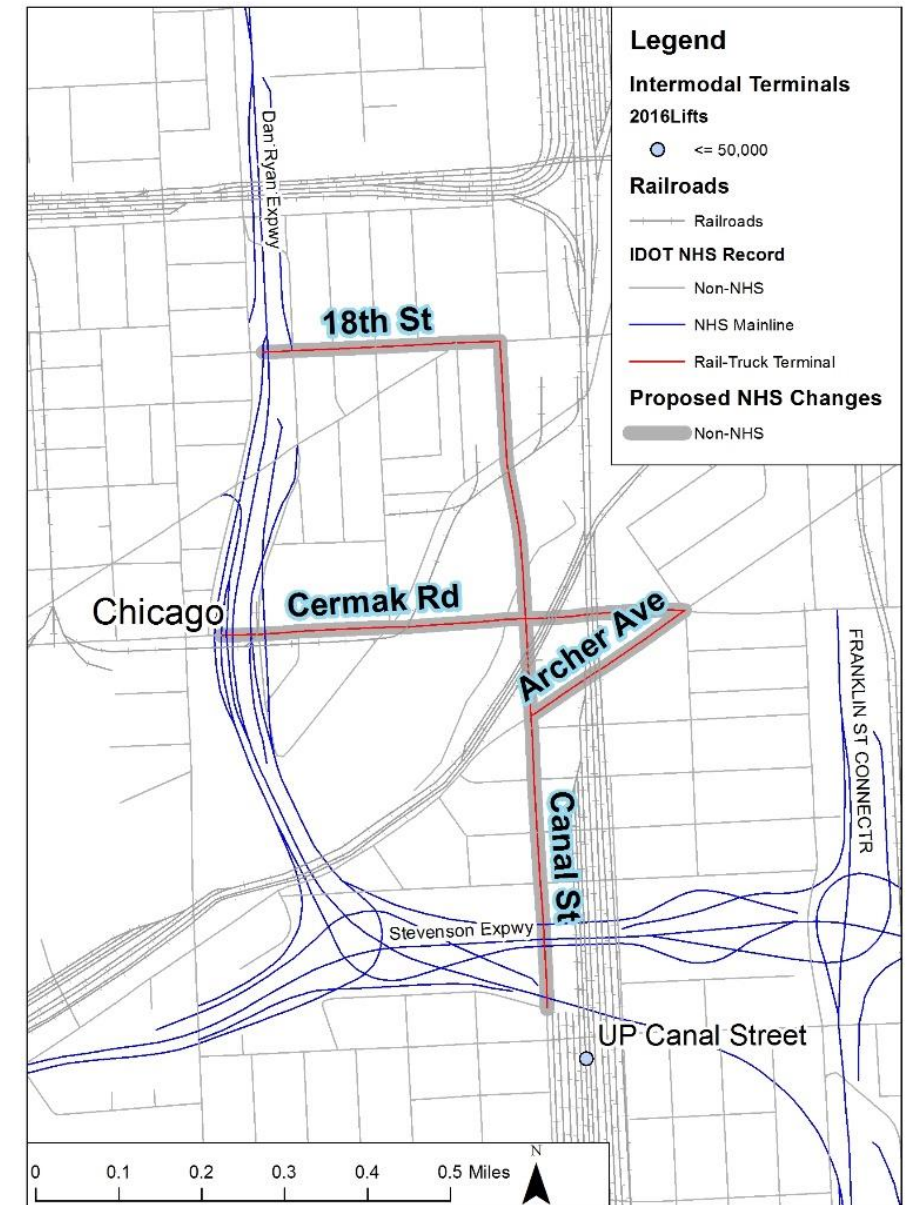


NHS Intermodal Connectors

UP Canal Street

- Terminal had been closed when the UP Joliet Intermodal Terminal was opened, but the terminal still sees activity adjutant to Global-I.
- Analyses of truck trips didn't find many truck trips.
- Terminal volumes are too low to qualify for intermodal connectors. 18th Street, Cermak Rd., Canal St., and Archer Ave are being removed from the NHS.

NHS Changes - UP Canal Street

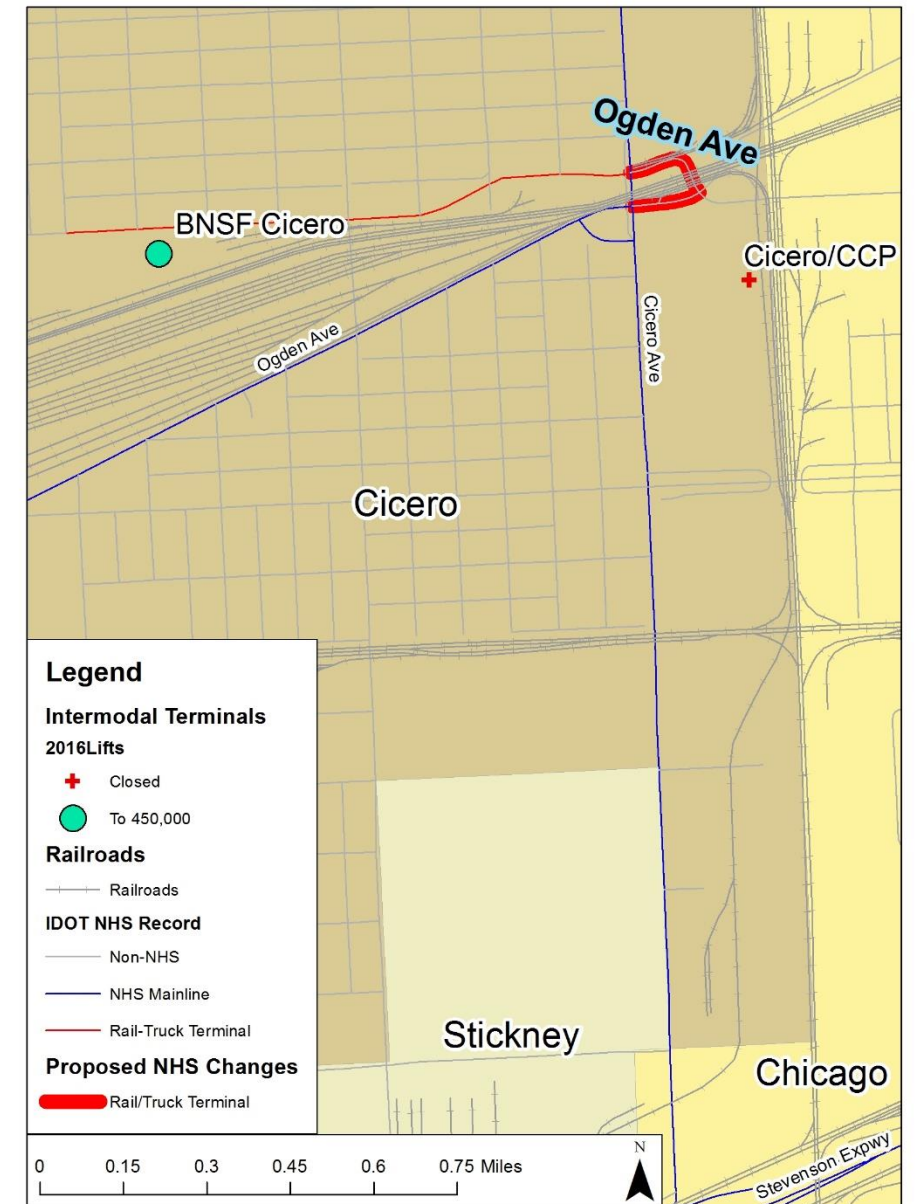


NHS Intermodal Connectors

BNSF Cicero

- Reconstruction of Cicero/Ogden intersections/bridges changed connectivity.
- CCP terminal closed.
- Connectivity corrected, adding segments of 25th Place and Ogden Ave to the NHS.

NHS Changes - Cicero

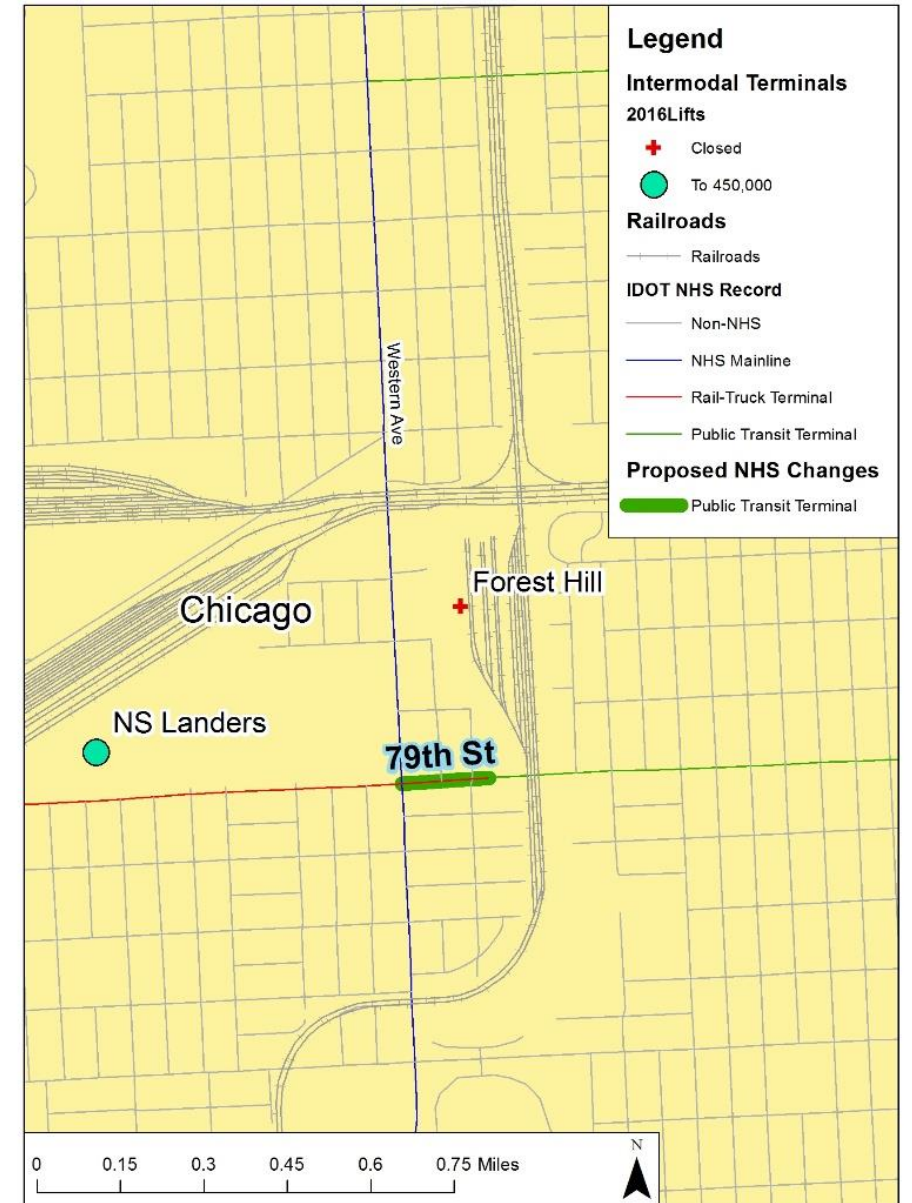


NHS Intermodal Connectors

Forest Hill

- Forest Hill intermodal terminal has been closed.
- A segment of 79th Street is to be redesignated from a rail-truck NHS connector to a public transit intermodal connector.

NHS Changes - Forest Hill

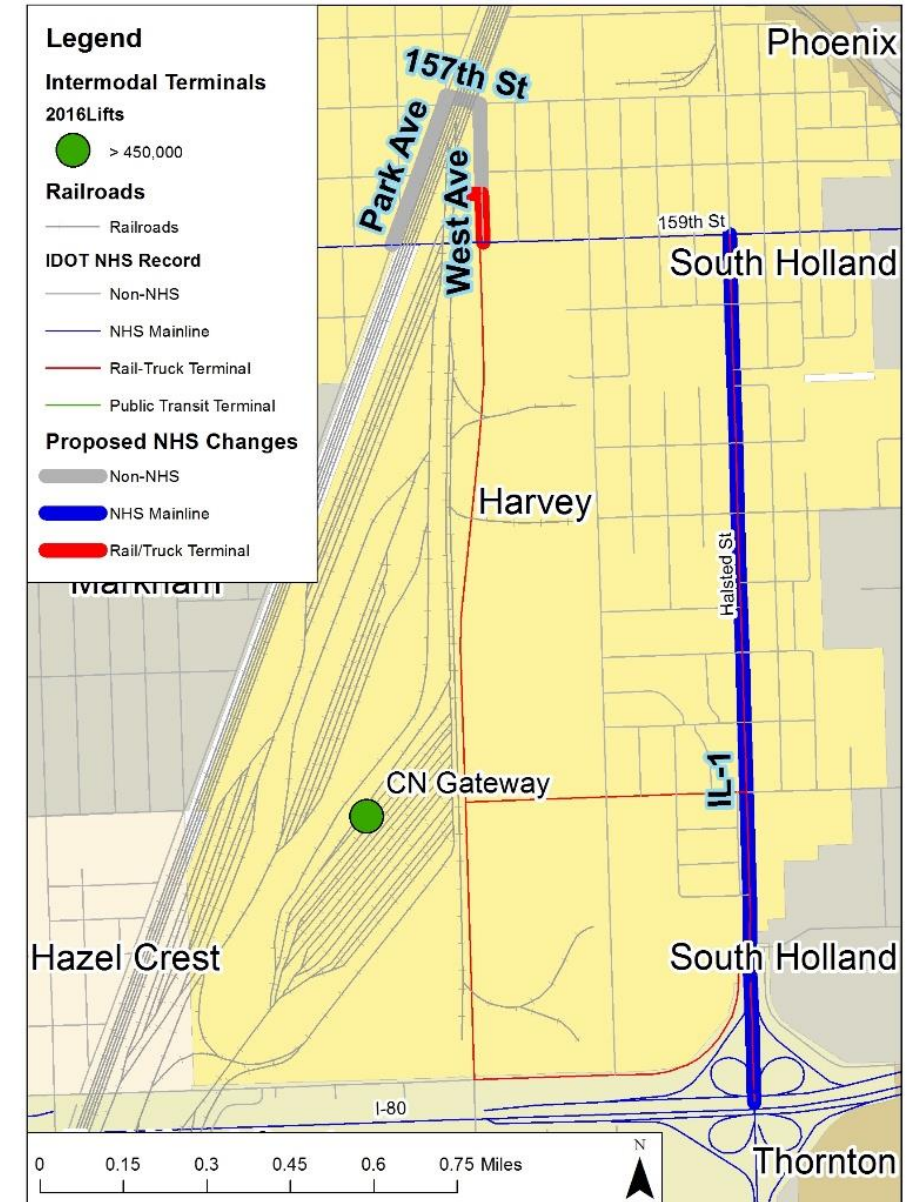


NHS Intermodal Connectors

CN Gateway

- North access point, previously closed, has reopened.
- Previous de-designations will remain as technical corrections, except for a short segment of West Ave., handling the greatest part of the north-gate truck traffic.
- Halsted Street is to be redesignated as NHS mainline, continuing mainline NHS route from the south.

NHS Changes - Gateway

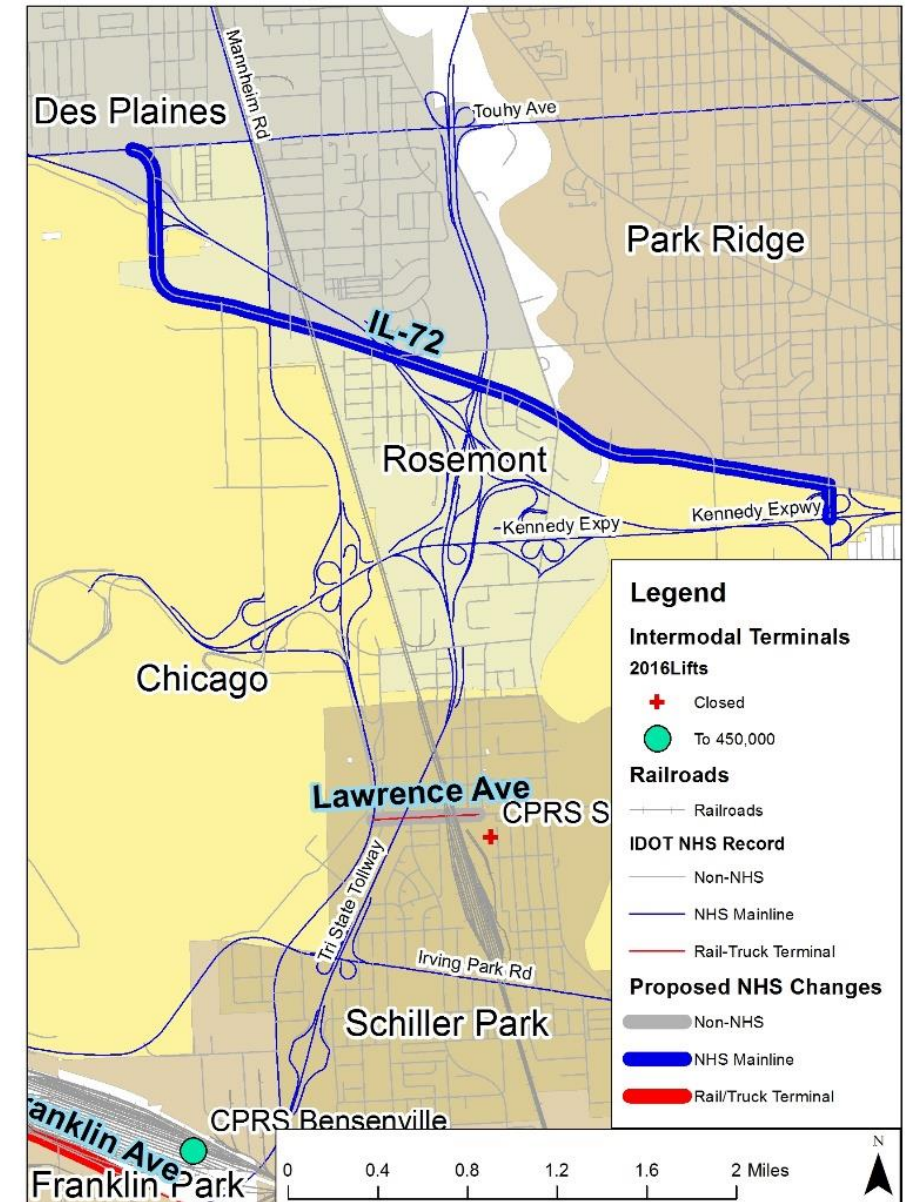


NHS Intermodal Connectors

O'Hare Cargo Terminal

- Higgins Road is proposed to be designated as a mainline NHS route. Higgins provides access to Patton Dr., the site of the northeast cargo terminal.

NHS Changes - O'Hare Cargo Terminal

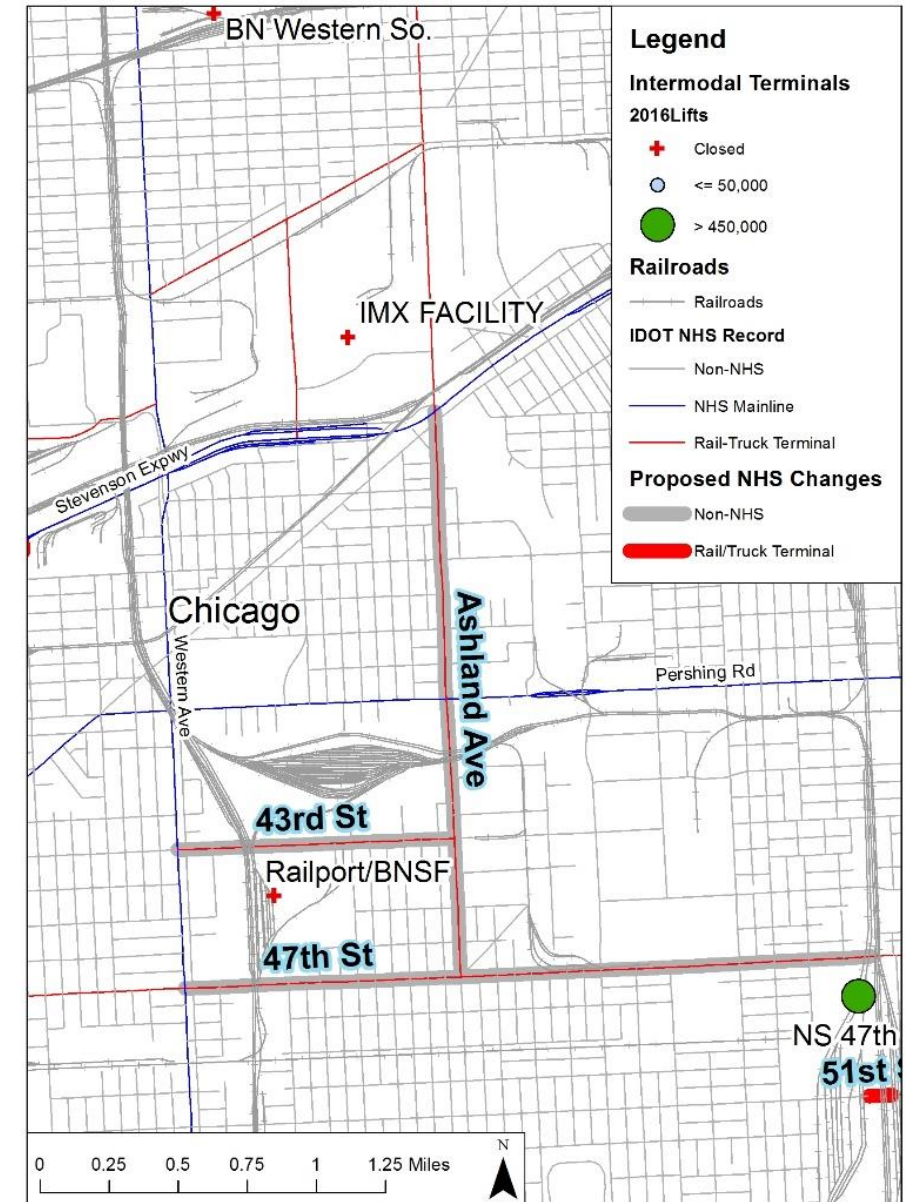


NHS Intermodal Connectors

Railport (CN/BNSF)

- Railport has been closed.
- Railport connectors were checked for cross-town inter-terminal traffic for open terminals. Little such traffic was found to use Railport connector routes.
- Parts of Ashland Ave, 47th Street, and 43rd Street are proposed to be removed from the NHS.

NHS Changes - Railport



Questions?

Tom Murtha
tmurtha@cmap.illinois.gov