



ILLINOIS INTERNATIONAL PORT DISTRICT MASTER PLAN



Chicago Metropolitan
Agency for Planning

Steering Committee Meeting #1 February 3, 2020

IIPD Optional Tour Information

- **What:** Shuttle tour of the Port District, with highlights of the Port's main sites
- **When:** Today at 3:30 pm, following the close of the Steering Committee Meeting
 - Bus will return at approximately 5 pm
- **Where:** Meet in the main parking lot of the Harborside International Golf Center, 11001 South Doty Avenue East, Chicago
- **If you did not RSVP** but would like to attend the tour, please see Kira Baltutis at the sign-in table following the close of the meeting



Chicago Metropolitan
Agency for Planning

Welcome to the IIPD



Agenda for Today

- Welcome
- IIPD Overview
- Master Planning Process
- Initial Opportunities and Challenges
- Survey
- Optional Tour



Chicago Metropolitan
Agency for Planning

CMAP Planning Priorities

- CMAP conducted an initial planning effort, which articulated the need for a Master Plan and identified three key priorities:
 - Need for long term vision building upon the “E.R.I.C.” Initiative
 - Need for the IIPD and City and State agencies to collaboratively address infrastructure needs at the port
 - Opportunity for the IIPD to contribute to the livability of the surrounding communities



Chicago Metropolitan
Agency for Planning

Master Plan Stakeholder Engagement

- Interviews with key stakeholders
- Focus groups for environmental organizations
- Public survey
- Public Open House
- Steering Committee

FALL 2019

- State of Port – Plan Kick-off

WINTER 2020

- Steering Committee Meeting 1
- Public Survey Distribution

SPRING 2020

- Steering Committee Meeting 2
- Public Open House

SUMMER 2020

- Steering Committee Meeting 3
- Final Plan



Chicago Metropolitan
Agency for Planning

Why are you here today?

- You represent the governments, agencies, associations, industries, and communities that are impacted by the IIPD
- We will convene this group 3 times during the Master Planning process
- 3 goals for this Steering Committee:
 - Education and 2-way sharing of information
 - Guiding and vetting the planning process
 - Collaborating and partnering on implementation



Chicago Metropolitan
Agency for Planning

IIPD Overview



Illinois International Port District

- Created in 1951 by Illinois General Assembly
- Nine-member Board appointed by Mayor of Chicago and Governor of Illinois
- 190 acres at Iroquois Landing
- 1,600 acres at Lake Calumet
- Harborside International Golf Facility



Chicago Metropolitan
Agency for Planning



Illinois International Port District

- Connections to road, rail, and water
 - The only Great Lakes and Inland Rivers Port
 - The St. Lawrence Seaway and the Mississippi/Illinois River system
 - Six of the seven North American Class I Railroads
 - Within 10 miles of five US Highways



Chicago Metropolitan
Agency for Planning



IIPD Economic Impact (2017)

• Total Jobs	6,381
• Total Personal Income	\$515M
• Business Revenue	\$480M
• State Taxes	\$56M
• Federal Taxes	\$135M
• Total Revenue	\$1.2B



Chicago Metropolitan
Agency for Planning

E.R.I.C. Initiative

Economy & Environment	Jobs, new cargo, renewable energies, air and water quality
Resources & Recreation	Location, land, connectivity, and opportunities to enjoy the port
Industry & Innovation	New leases and facilities, rehabilitation and automation
Community & Conservation	Hotel, community amenities and collaboration, Square Marsh revitalization



Chicago Metropolitan
Agency for Planning

Key 2019 Activities

- Kicked off Master Planning study (*State funded, CMAP LTA Program*)
- Scoped Multi-use Path study (*Invest in Cook; IDNR Funding*)
- Initiated Square Marsh study
- Butler Drive Road/Rail Reconstruction Project (*Invest in Cook; Chicago TIF funding*)



Chicago Metropolitan
Agency for Planning

Butler Drive Road/Rail Improvements



Stony Island/130th Street – 127th Street/Doty Ave.



Chicago Metropolitan
Agency for Planning

2020 Outlook

- Continue Butler Drive improvements
 - Complete Master Planning with CMAP
 - Explore alternative energy opportunities including solar panels
 - Investigate additional rail opportunities
 - Focus on the dock walls
 - Lease remaining available land
- Will release RFPs/RFIs for new projects
 - Continue community support efforts with:
 - Sweet Beginnings
 - Active Transportation
 - The Nature Conservancy
 - Host Port 5k run/walk
 - Port barge music series
 - Pink barge cancer event



Chicago Metropolitan
Agency for Planning

Master Plan



Master Plan Overview

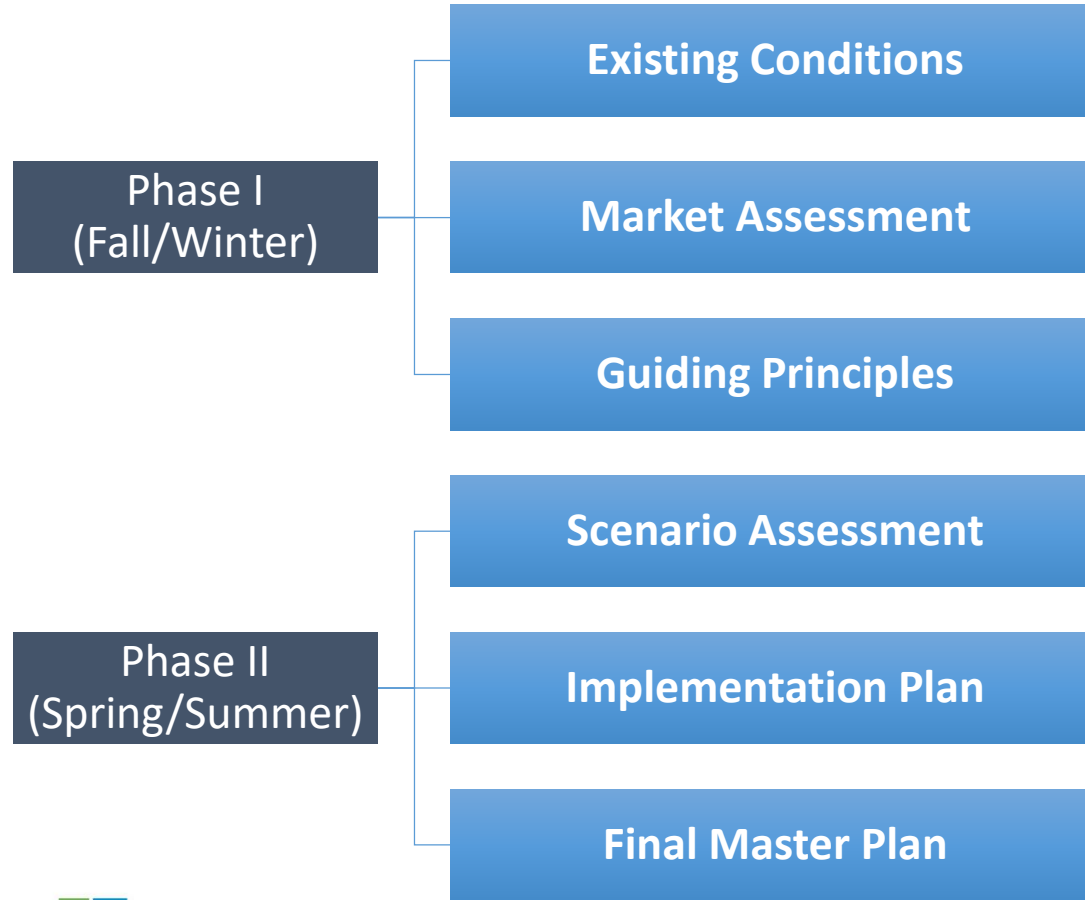
- Multi-agency process
 - Illinois DOT funded
 - IDNR review and approve
 - CMAP Local Technical Assistance (LTA) Program project
- 12-month planning process
 - Kicked off August, 2019
- Multi-faceted consultant team
 - Cambridge Systematics
 - Jacobs
 - Metro Strategies
 - Goodman Williams Group



Chicago Metropolitan
Agency for Planning



Master Plan Core Elements



Chicago Metropolitan
Agency for Planning



Activities To-Date

- Gathered and summarized existing data and planning studies for the port and study area
- Conducted stakeholder interviews
- Researched key trends in alignment with “E.R.I.C.” initiative
 - Environmental/Recreational
 - Residential/Community
 - Industrial
 - Commercial
- Developed an Existing Conditions draft report
- Developed public survey and information sharing tool



Chicago Metropolitan
Agency for Planning

Opportunities and Challenges

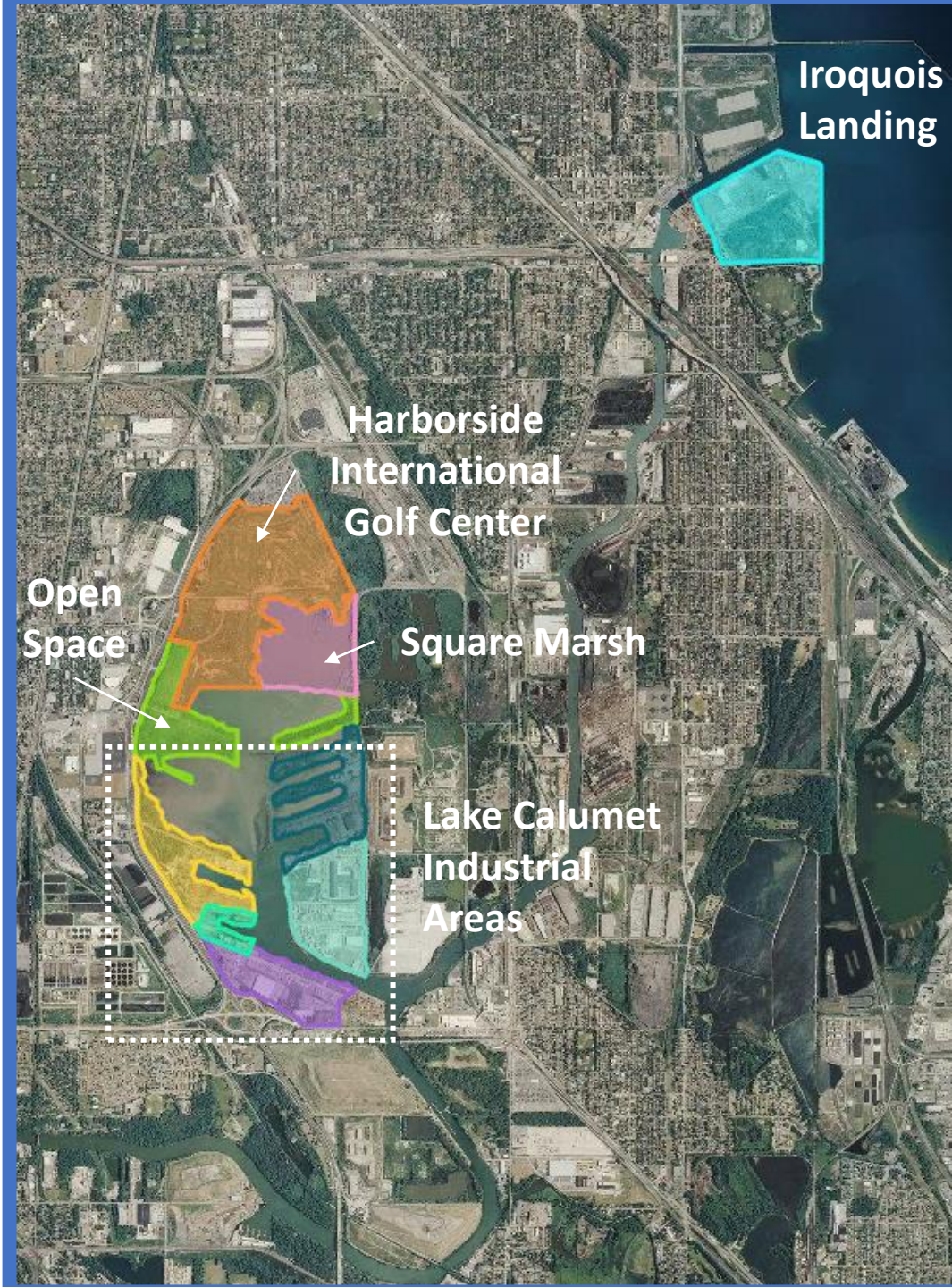


IIPD has Diverse Regions

- Iroquois Landing
- Harborside International Golf Center
- Square Marsh
- Open space
- Lake Calumet Industrial Areas



Chicago Metropolitan
Agency for Planning



A Master Plan Will Face Challenges

- Competing Priorities
- Historical Under-use
- Community Concerns
- Access/ Transparency
- Infrastructure
- Institutional
- Implementation



Chicago Metropolitan
Agency for Planning

Non-Industrial Uses



1. Harborside International Golf Center



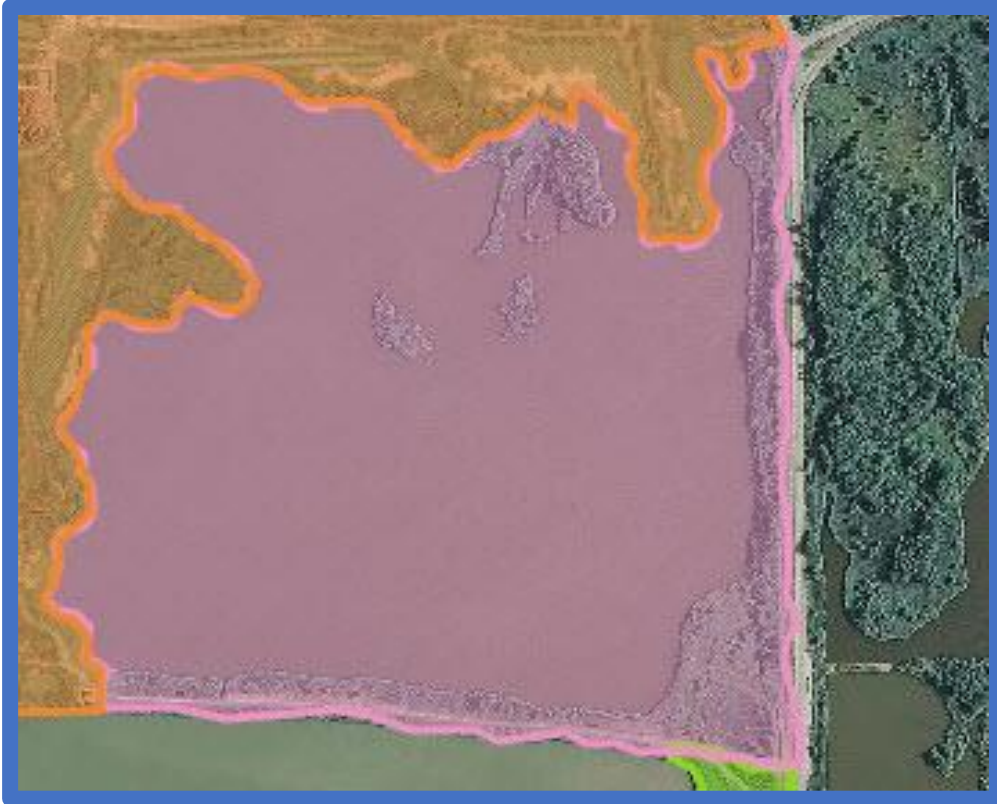
Harborside Golf Course (Source: IIPD)



Chicago Metropolitan
Agency for Planning

2. Square Marsh

- Ongoing study of Square Marsh
- Opportunity for a future Hemi-Marsh?



Top: Aerial of Square Marsh (Source: IIPD)

Bottom: A Hemi-Marsh (source: www.wetlandsinitiative.com)



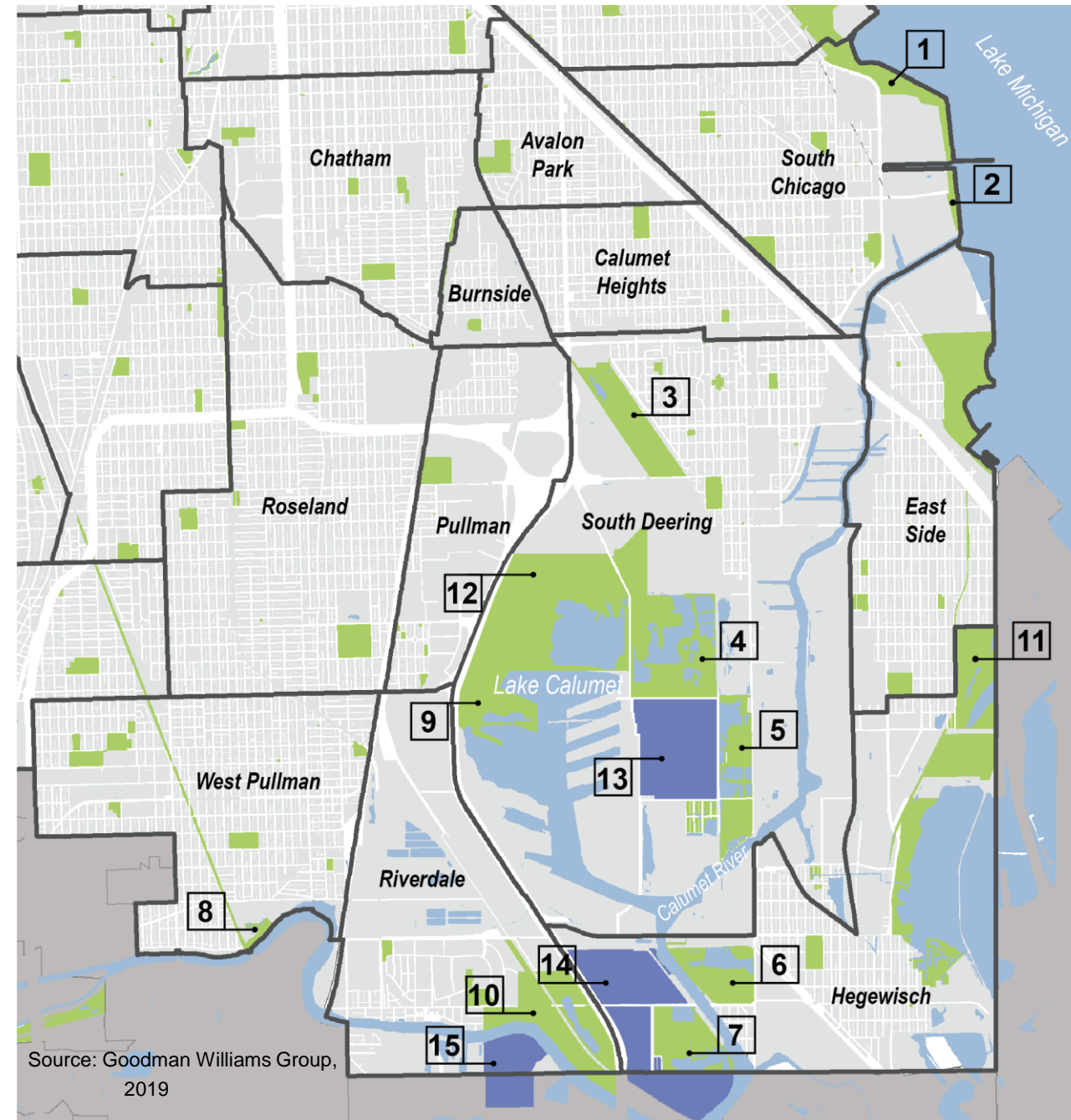
Chicago Metropolitan
Agency for Planning

Calumet Region Open and Recreational Space

- Numerous existing open and recreational spaces
 - #4 – Big Marsh Park
 - #9 Lake Calumet
- Regional connectivity is a challenge



Chicago Metropolitan
Agency for Planning



Multi-Use Path Study

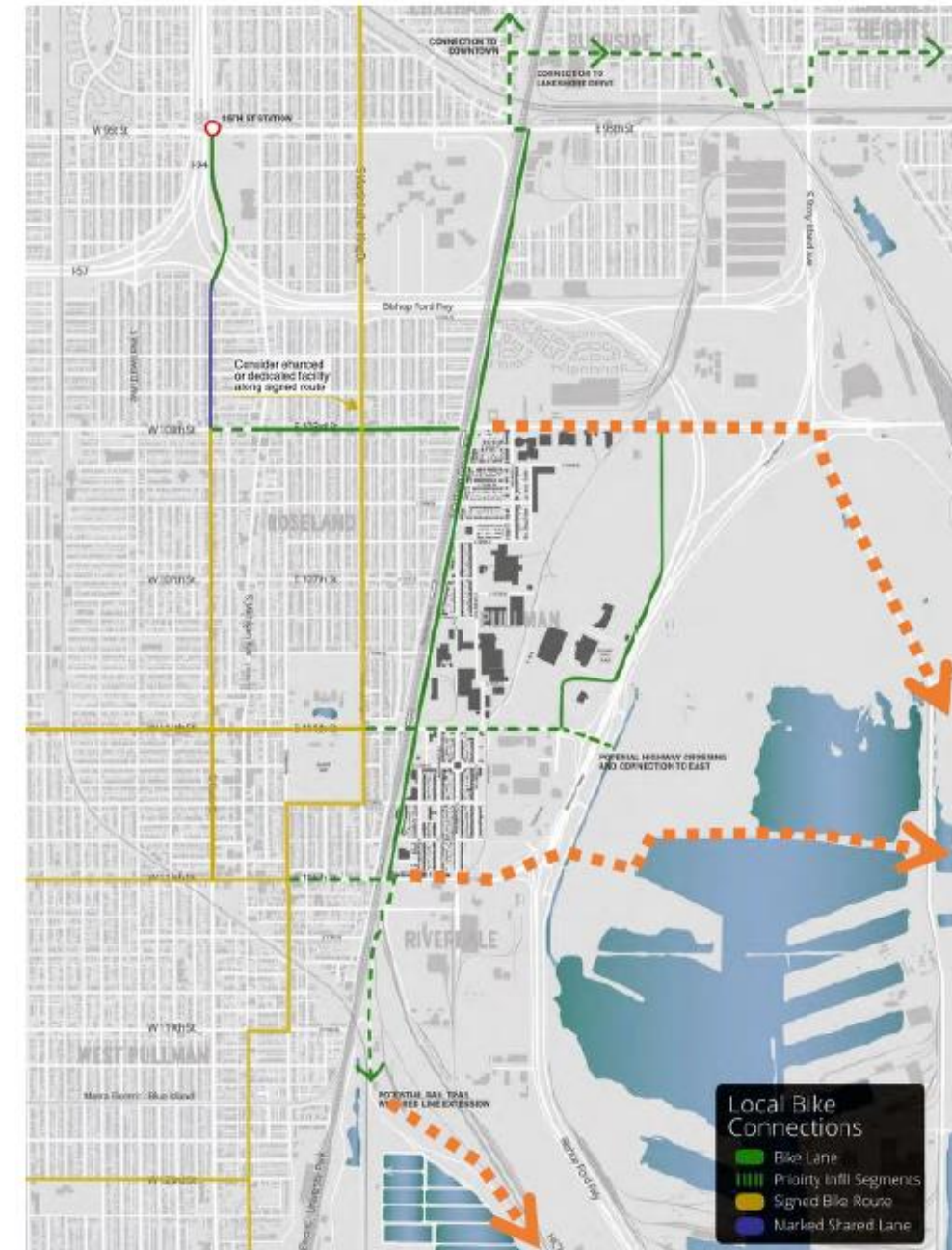
- Active Transportation Alliance studying a potential multi-use path across Lake Calumet to connect Pullman area with Big Marsh Park



Big Marsh Park. (Source: City of Chicago)



Chicago Metropolitan
Agency for Planning



3. West Side of the IIPD



Top: Land West of Lake Calumet (Source: IIPD)

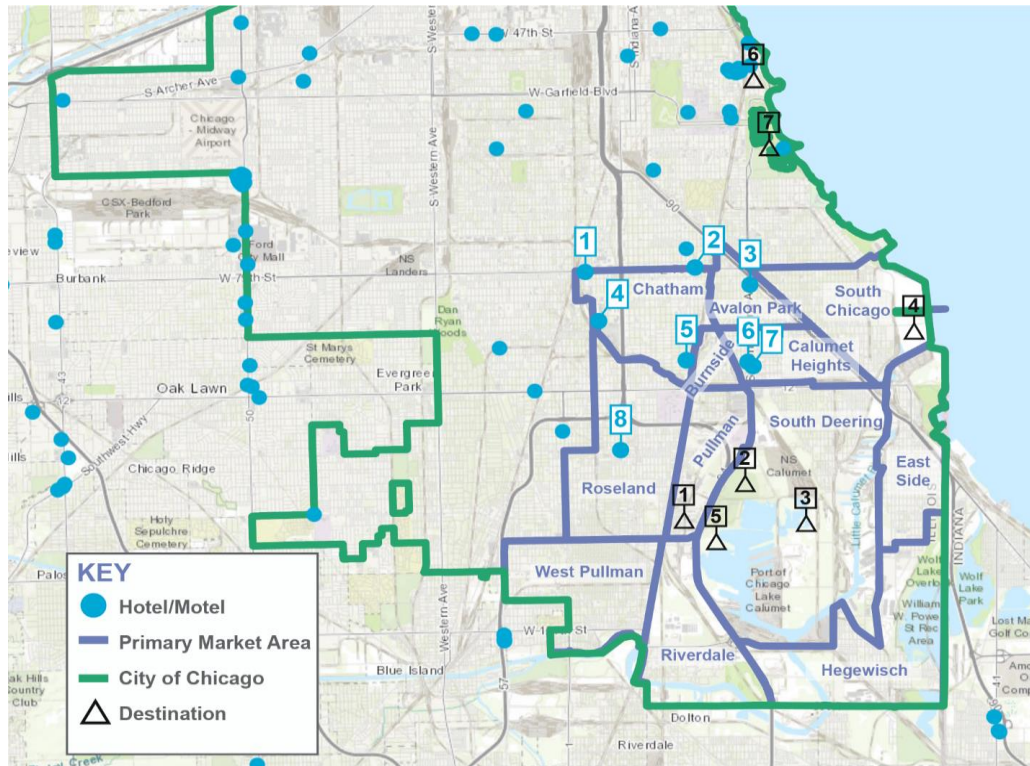
Bottom: Port Entrance West Lake Calumet (Source: IIPD)



Chicago Metropolitan
Agency for Planning

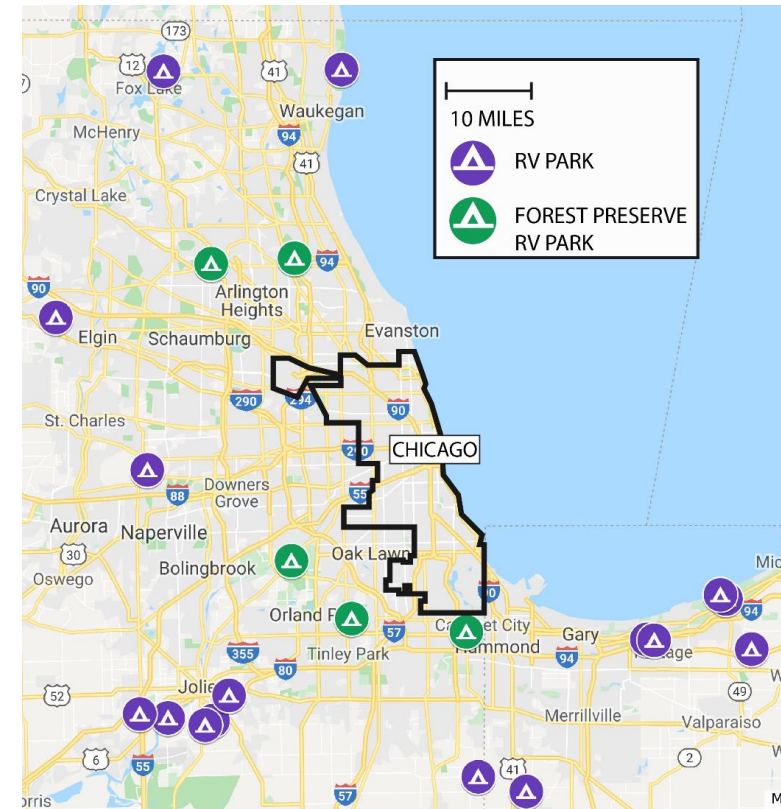
Few options for lodging in Calumet region

- No name brand hotels/motels in the study area



Source: Goodman Williams Group, 2019

- No RV parks in Chicago



Source: Goodman Williams Group, 2019

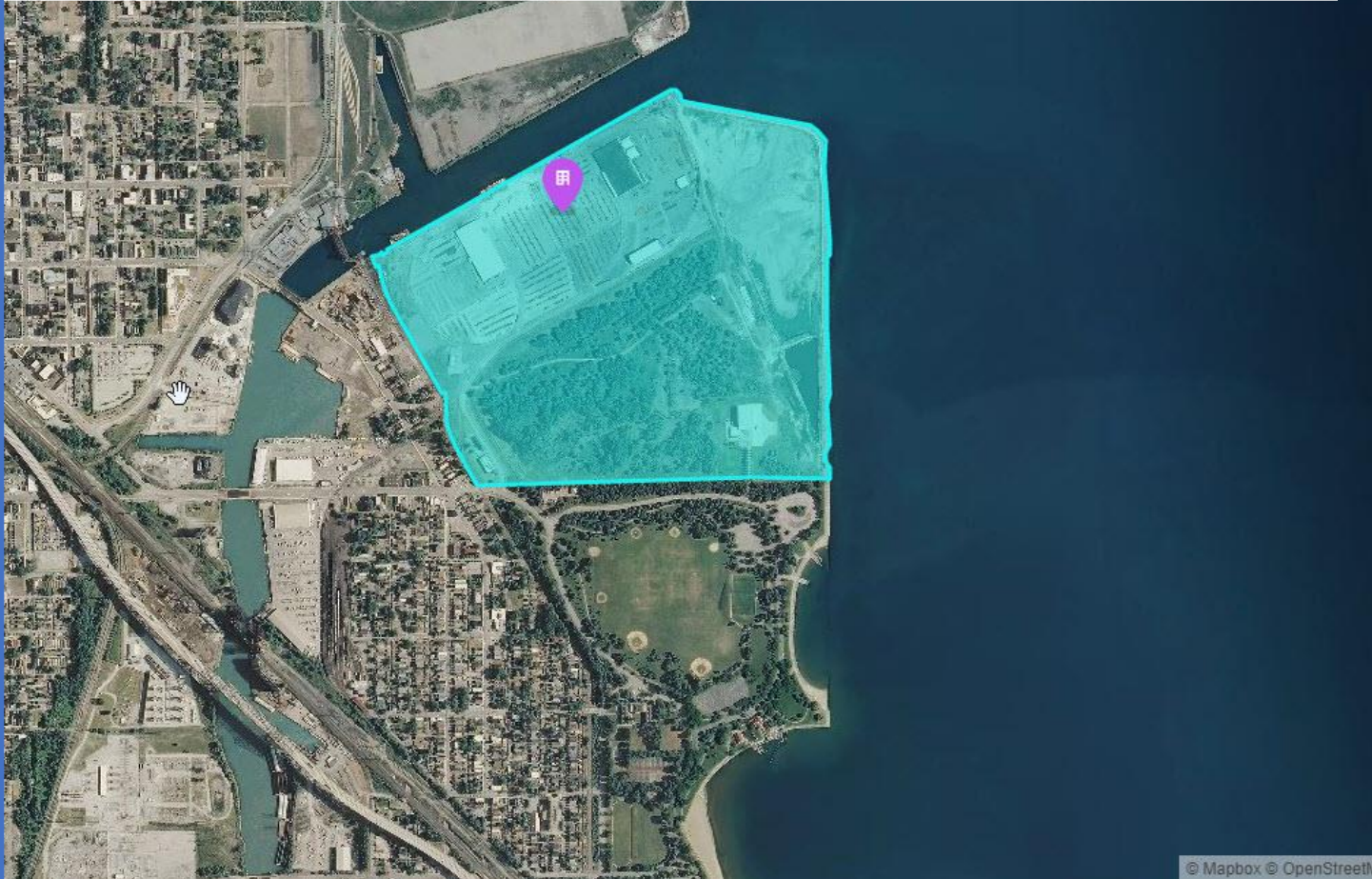


Industrial Uses



4. Iroquois Landing

- Primarily used as a stevedoring port
- Passenger cruise ship dock
- Opportunities for increased freight use?



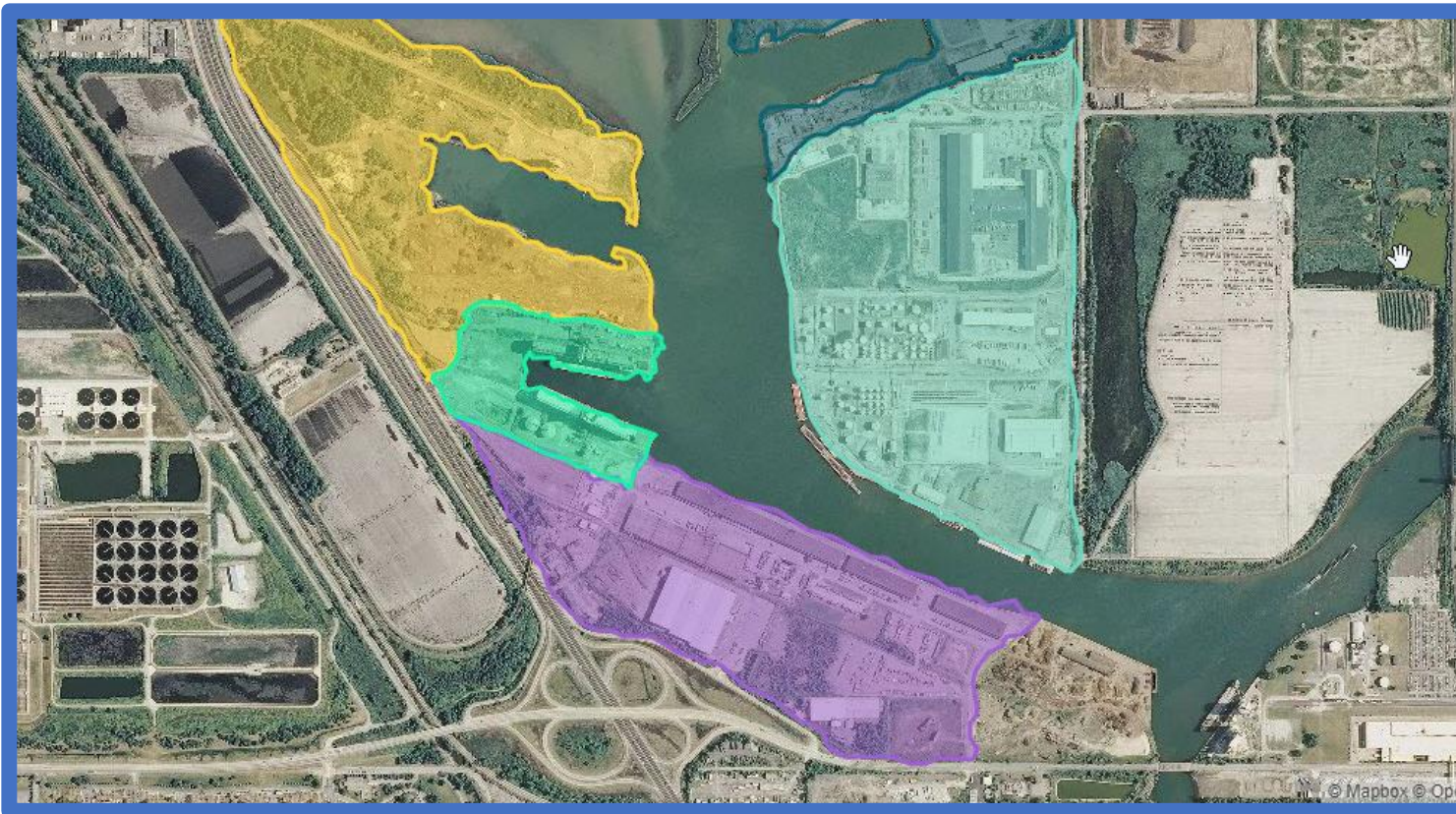
Top: Iroquois Landing Aerial
(Source: IIPD)



Bottom: Collapsed Dock Wall
at Iroquois Landing
(Source: IIPD)

5. Lake Calumet Industrial Areas

- Numerous tenants, leases need renegotiated
- Significant infrastructure needs (terminals, grain elevators, Butler Drive)
- Opportunities for more industrial/freight uses?



Top: Lake Calumet South Dock Wall (Source: IIPD)

Bottom: Sweet Mix Facilities on Butler Drive (Source: IIPD)



The Calumet Region is the Former Steel Capital of Chicago

- At its peak, the regional steel industry employed over 200,000 workers
- In the 1970s, steel mills began to close
 - Last closure around 2000
- Within the last decade, this region has become more attractive again
 - Available industrial land
 - Proximity to transportation
- "Newer" and "greener" approaches to industry

US Steel South Works, 1920



Source: industrialscenery.blogspot.com

Former US Steel South Works Site, 2018



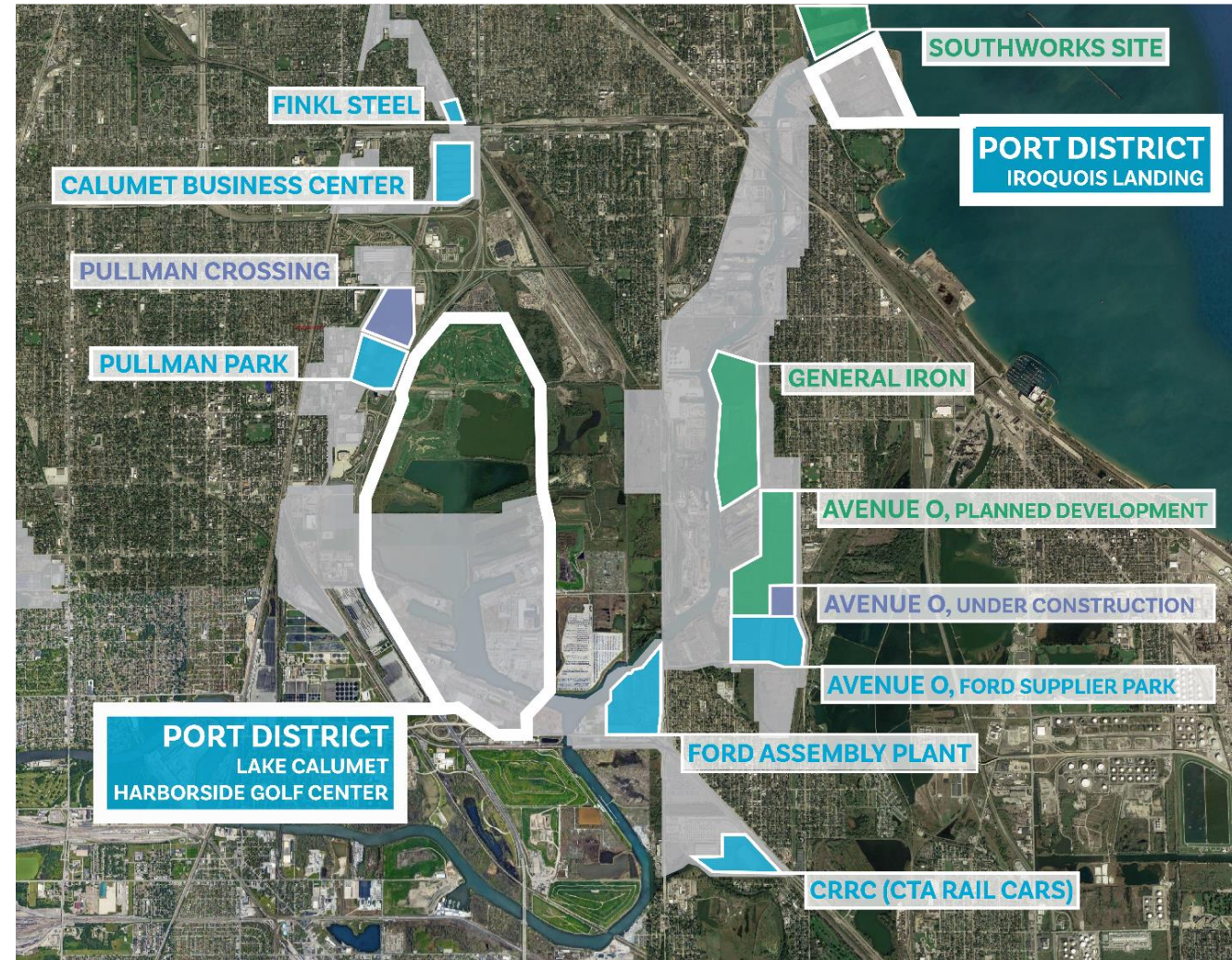
Source: aeschicago.wordpress.com



Chicago Metropolitan
Agency for Planning

Industrial Prospects Continue to Grow

- Within the study area's 4 industrial corridors, there exists over 16M sq. ft of industrial space, and 2M sq. ft is under construction
- Developers are not only building for existing tenants, but also speculatively (Avenue O)



Chicago Metropolitan
Agency for Planning



Existing



Under Construction



Planned Development



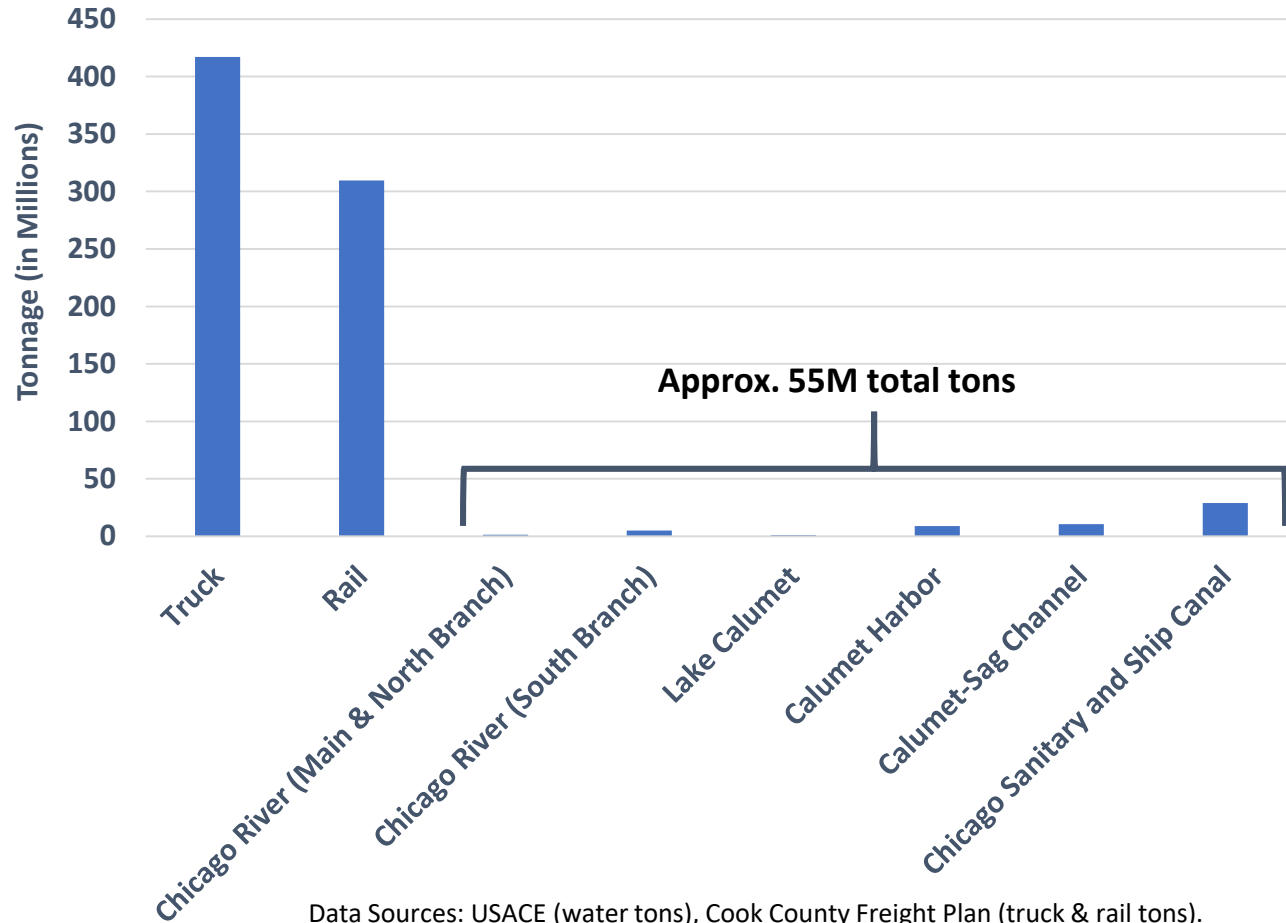
Industrial Corridor

Source: Goodman Williams Group, November 2019

Freight Trends



Regional Freight is Multimodal



- About 782M total tons moved throughout Cook County in 2017
- Majority of tonnage moved by truck (53%) and rail (40%)
- Marine tonnage is about 7%

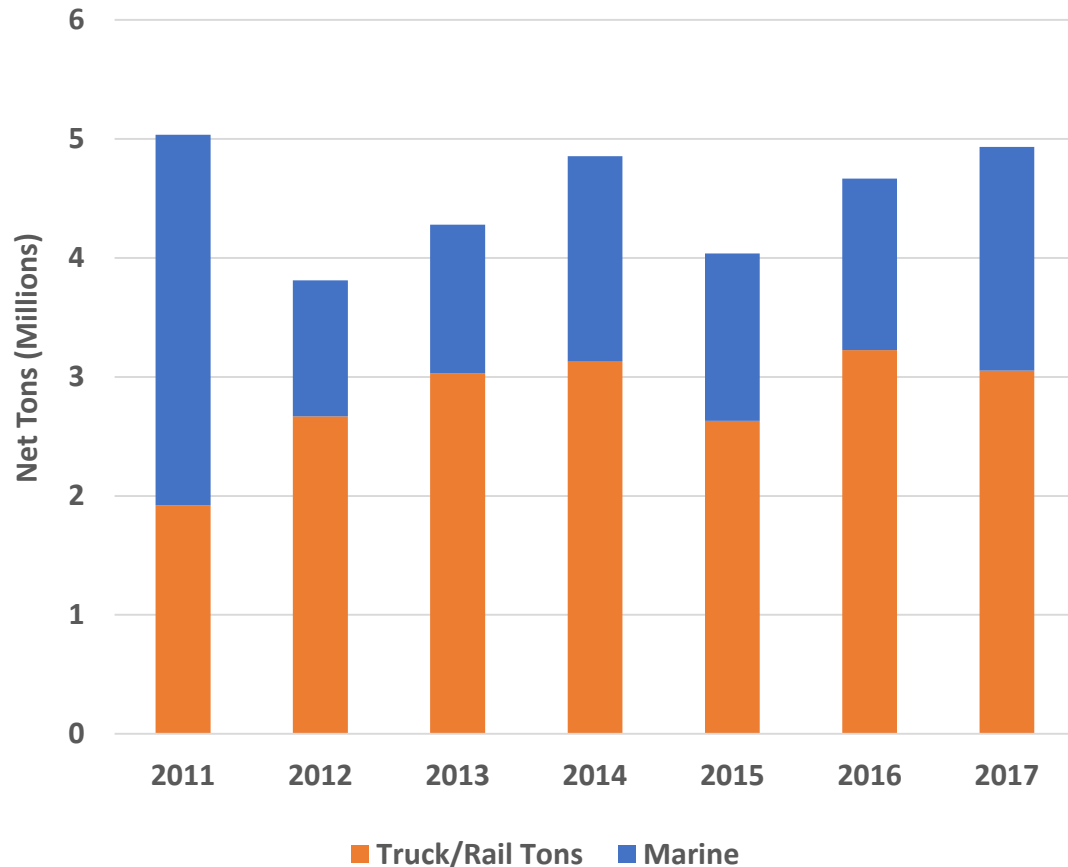
Data Sources: USACE (water tons), Cook County Freight Plan (truck & rail tons).

Note: Does not include pipeline or air modes. Includes inbound, outbound, intra-County, and through traffic.

Chicago Metropolitan
Agency for Planning



IIPD Freight Tonnage by Mode



- IIPD total tonnage has ranged between 4M-5M tons since 2011, volumes have fluctuated around 25%
- Mode share is changing
 - Marine (vessel/barge) decreased from 62% in 2011 to 38% in 2017
 - Rail share has increased over the same timeframe to about 50%

Data Source: IIPD.



Chicago Metropolitan
Agency for Planning

IIPD Multimodal Activity

- The IIPD serves
 - Great Lakes and International Vessels
 - Inland Waterway Barges
 - Rail
 - Trucks
- Iroquois Landing primarily handles foreign and domestic imports
- Freight opportunities extend beyond waterway system
 - Rail/rail or rail/truck



Source: IIPD



General Cargo Ship Atlantic Runner II

Source: <https://www.vesseltracker.com/en/Ships/Atlantic-Runner-li-9509619.html>

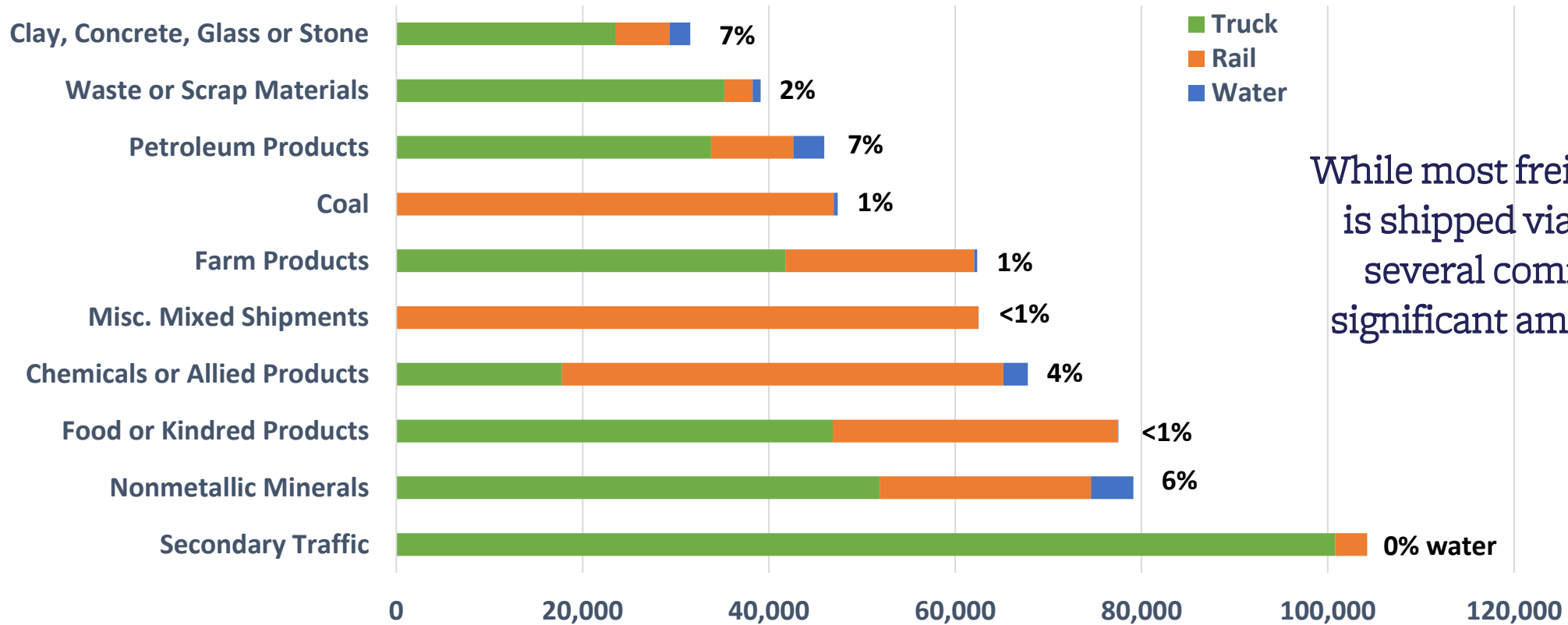


Source: Modified from:
<http://www.idahowheat.org/why-the-river-system-matters>



Chicago Metropolitan
Agency for Planning

Regional Top Commodities



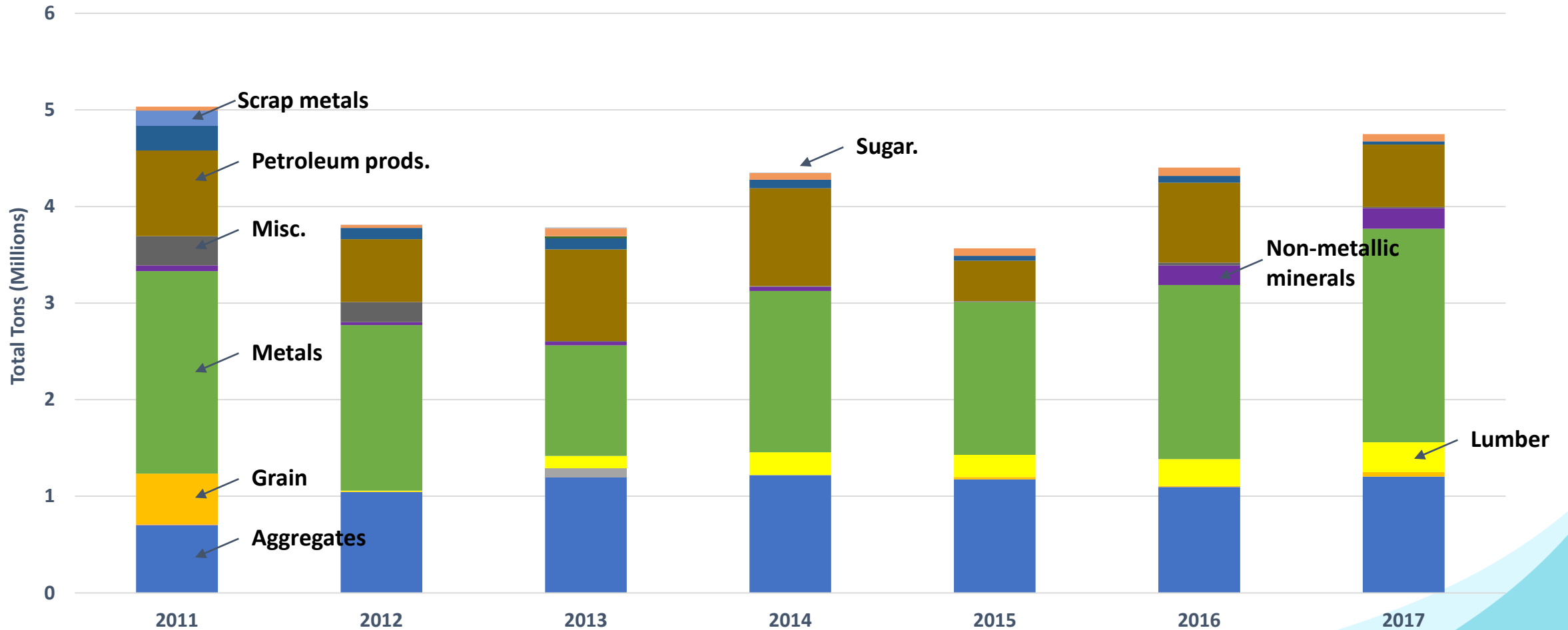
While most freight in the region is shipped via rail and truck, several commodities ship significant amounts via water

Data Sources: USACE (water tons), Cook County Freight Plan (truck & rail tons).
Does not include pipeline or air modes.



Chicago Metropolitan
Agency for Planning

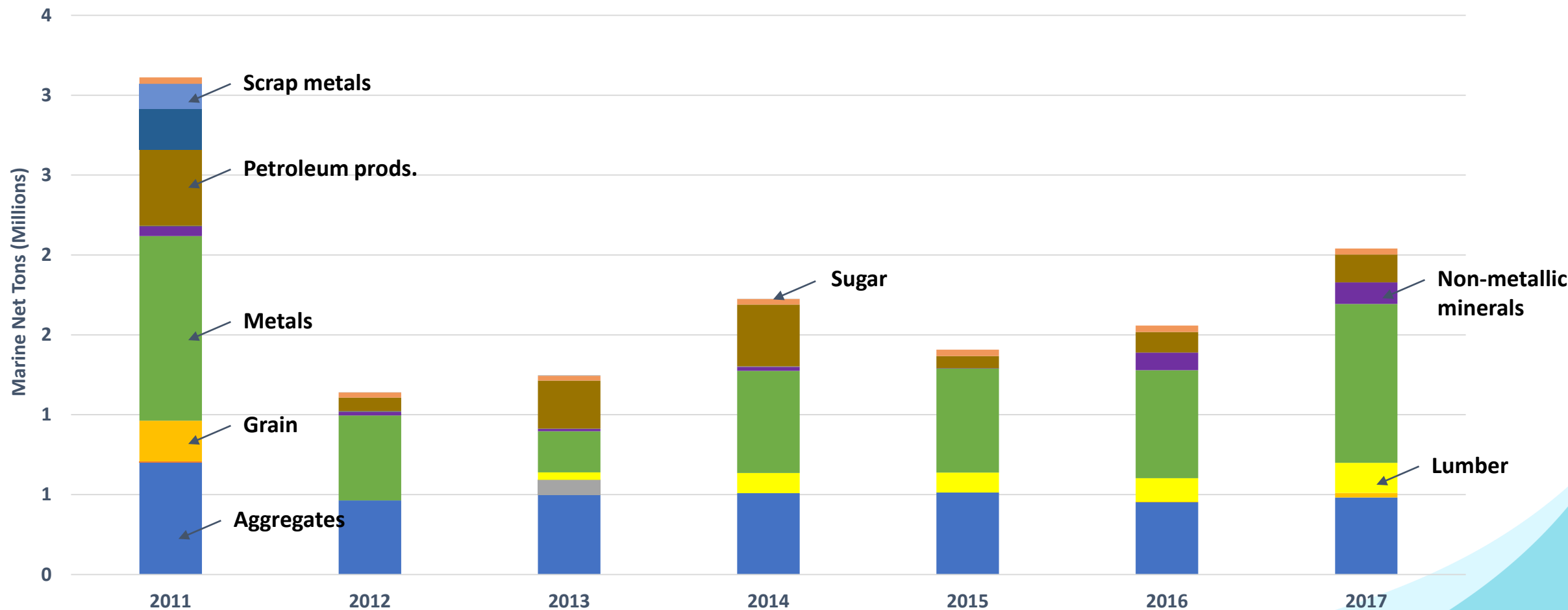
IIPD Total Tonnage by Commodity



Chicago Metropolitan
Agency for Planning

Data Source: IIPD.

IIPD Marine Only Tonnage



Chicago Metropolitan
Agency for Planning

Data Source: IIPD.

Discussion



15 Minute Break



Let's Take a Poll



Time for some questions...



- Raise your hand if you don't have a clicker
- How it works...
- With your device, simply press the button that corresponds to your answer choice
- Green light = response

Test Question: Would you come out for the removal of the ghost ship?

66% A. Yes, definitely!

3% B. No, I would not

23% C. Maybe

9% D. What is the ghost ship?

What is your connection to the Port?

0% A. I live near the Port

11% B. I work or am a business tenant at the Port

0% C. I am involved with a community organization

8% D. I am a regional stakeholder

67% E. I represent a public agency or non-profit

3% F. I have no connection to the Port

11% G. Other

When you think of the Port, what comes to mind?

14% A. Jobs and local business opportunities

60% B. Cargo and goods movement

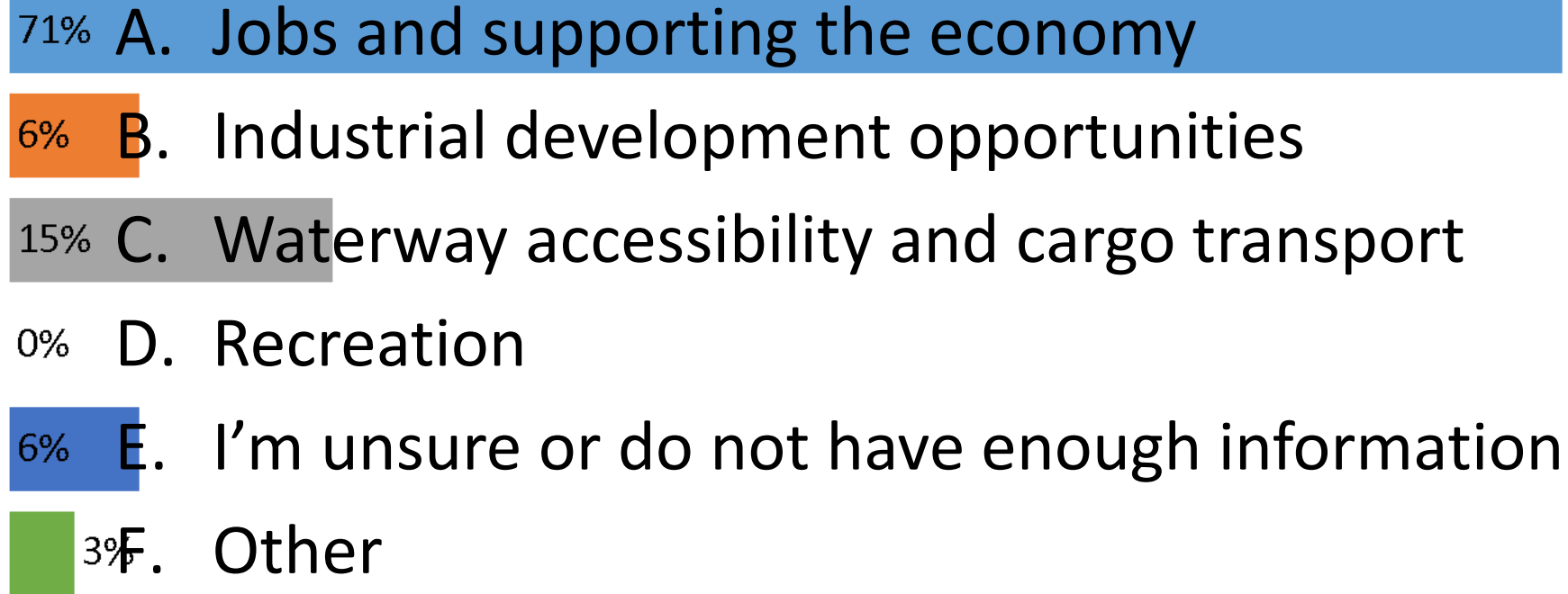
17% C. Industrial space

3% D. Open space and recreation

3% E. I'm not sure what goes on at the Port

3% F. Other

What is the most important role for the Port?



What is the most pressing challenge for the Port?

- 44% A. Grow employment opportunities and economic development
- 0% B. Expand green space/recreational space
- 19% C. Protect the environment
- 8% D. Create a regional draw/tourism
- 25% E. Lagging industrial development
- 3% F. Other

What areas of the Port have the highest current need? (Rank 3)

32% A. Economic development

16% B. Industrial development

11% C. Environmental

2% D. Commercial development

9% E. Community and recreational resources

12% F. Community connectivity

8% G. Innovative green technology

9% H. Providing waterway accessibility and cargo transport

0% I. Other

Thinking to 2050, what should be part of long-range planning for the Port? (Rank 3)



If you were given \$1 million to personally invest in the Port, what area would you use that money?

19% A. Economic development

16% B. Industrial development

13% C. Environmental

3% D. Commercial development

10% E. Community and recreational resources

26% F. Community connectivity

6% G. Innovative green technology

6% H. Providing waterway accessibility and cargo transport

0% I. Other

Next Steps / Call to Action

- **Project team:**

- Finalize Existing Conditions
- Undertake Peer Port Comparison and Market Assessment
- Launch Survey
- Begin Developing Potential Future Scenarios

- **How you can help:**

- Fill out your questionnaire
- **Share and promote the survey!**
- *What do I want the IIPD to be like in 5 years? 30 years?(Meeting #2)*
- *How can my agency/organization help implement this future?(Meeting #3)*

FALL 2019

- State of Port – Plan Kick-off

WINTER 2020

- Steering Committee Meeting 1
- Public Survey Distribution

SPRING 2020

- Steering Committee Meeting 2
- Public Open House

SUMMER 2020

- Steering Committee Meeting 3
- Final Plan

Connect with us!

IIPD

- www.iipd.com
- Twitter: @Illinois_IPD
- Facebook: IllinoisInternationalPortDistrict



CMAP

- www.cmap.illinois.gov/programs/Ita/iipd-master-plan
- Twitter: @ONT02050



Chicago Metropolitan
Agency for Planning



ILLINOIS INTERNATIONAL PORT DISTRICT MASTER PLAN



Chicago Metropolitan
Agency for Planning

Thank you!