

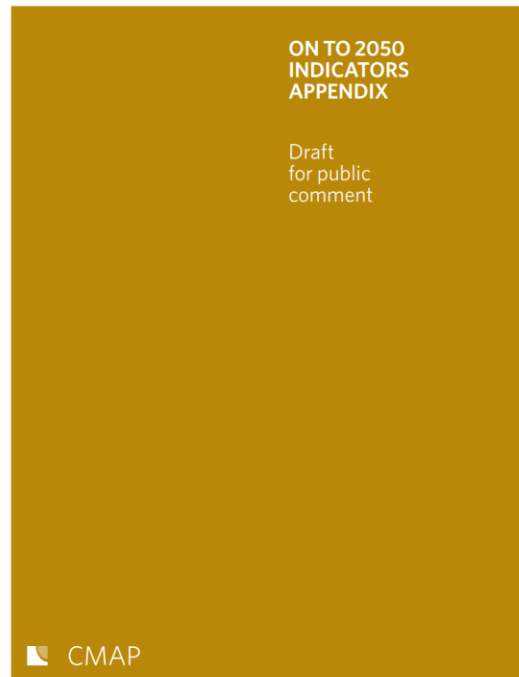
ON TO 2050

Draft Federal Performance Measure Targets

Transportation Committee
August 3, 2018

ON TO 2050

- Draft of ON TO 2050 is available for public comment till August 14
 - This includes 8 appendices

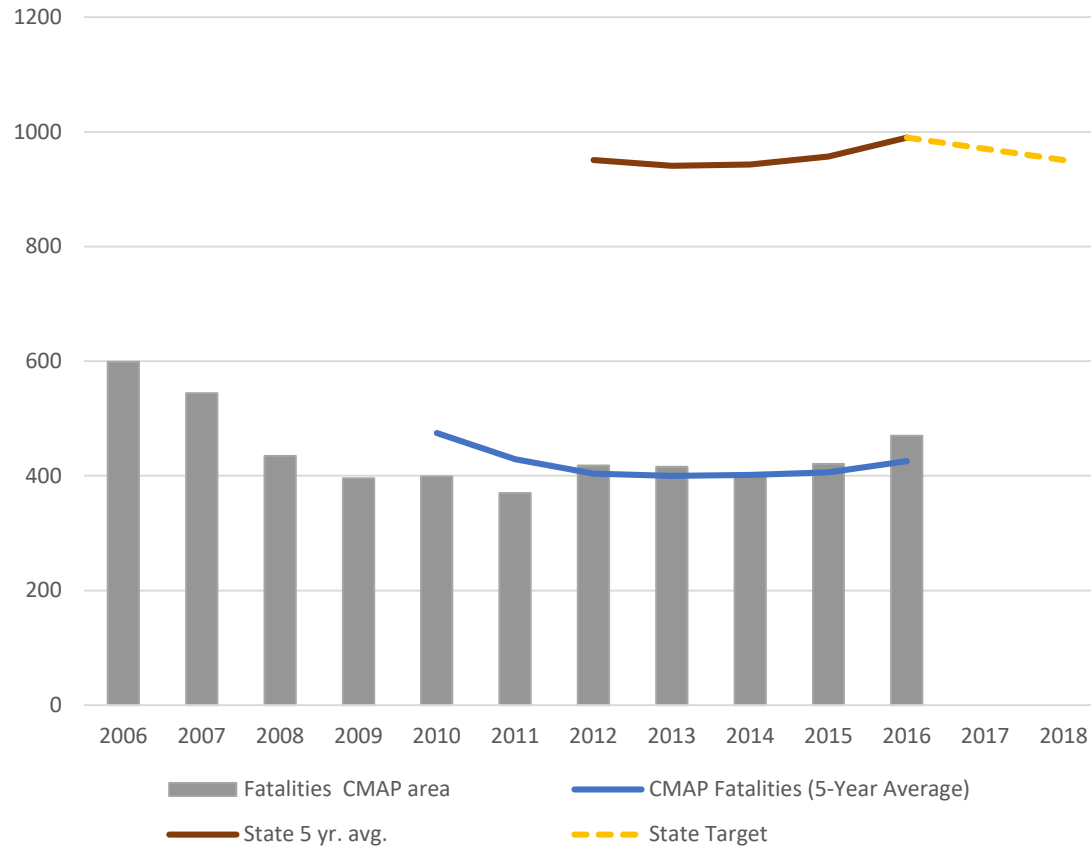


Federal Measures

- **Highway Safety (annual)**
 - Fatalities
 - Serious injuries
 - Non- motorized fatalities and serious injuries
- **Pavement and Bridge Condition (four year)**
 - Pavement condition
 - Bridge condition
- **System Performance (two and four year)**
 - Percent of trips to work via non-SOV modes
 - Highway reliability
 - Annual hours of peak hour excess delay per capita on the NHS
 - Truck travel time reliability
- **Transit Asset Management (four year)**
 - Transit rolling stock
 - Transit non-revenue service vehicles and equipment
 - Transit infrastructure
 - Transit facilities
- **Transit Safety (not part of ON TO 2050)**
 - Fatalities
 - Injuries
 - Safety Events
 - System Reliability

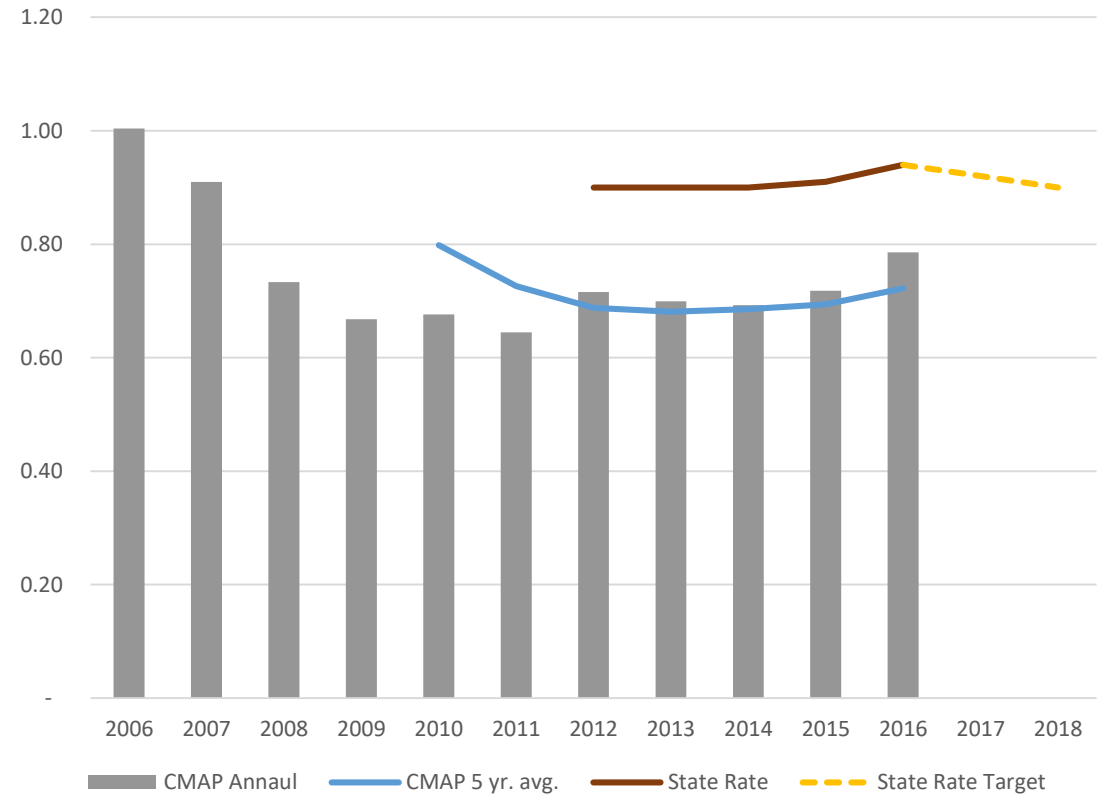
Highway Safety: Fatalities

Number of Traffic Fatalities



Target: Support IDOT’s goal to reduce the statewide traffic fatalities from 990.2 (2012-16 average) to 951 by December 31, 2018.

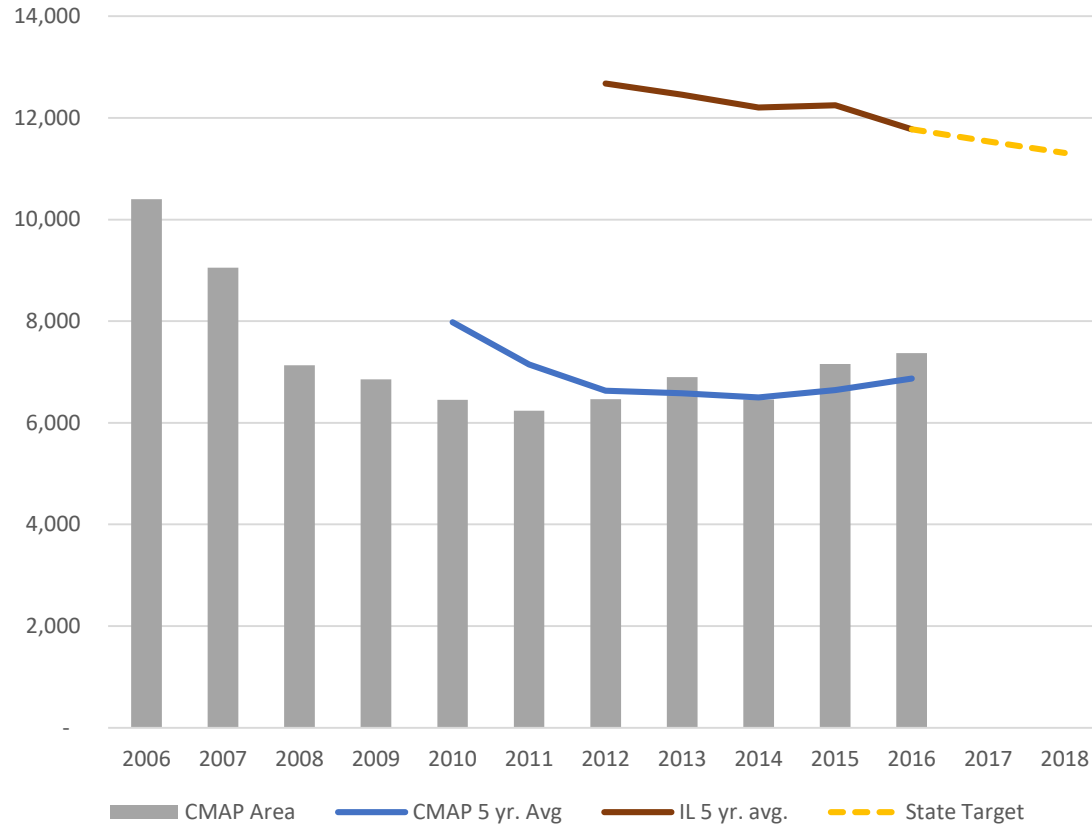
Fatalities per 100M VMT



Target: Support IDOT’s goal to reduce the statewide traffic fatality rate per 100 million vehicle miles traveled (VMT) from 0.94 (five-year 2012-16 average) to 0.90 (five-year 2014- 18 average) by December 31, 2018.

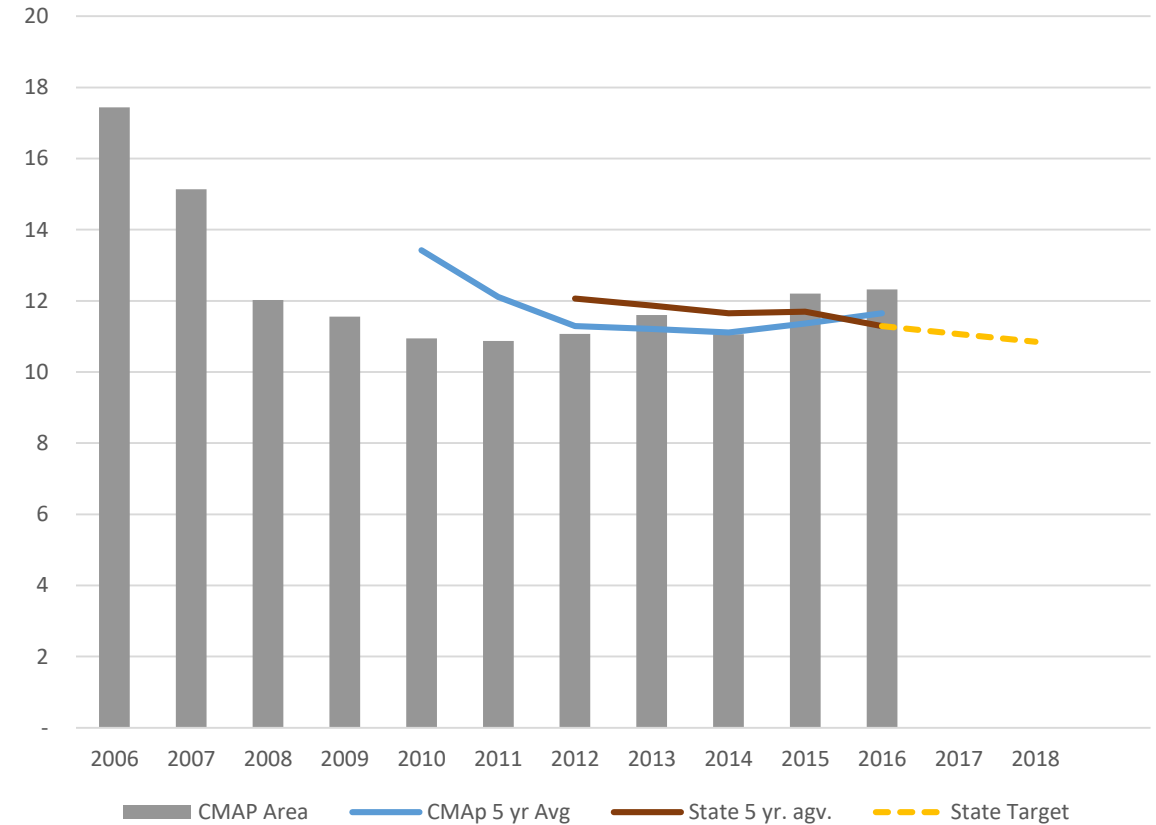
Highway Safety: Serious Injuries

Number of Serious Injuries



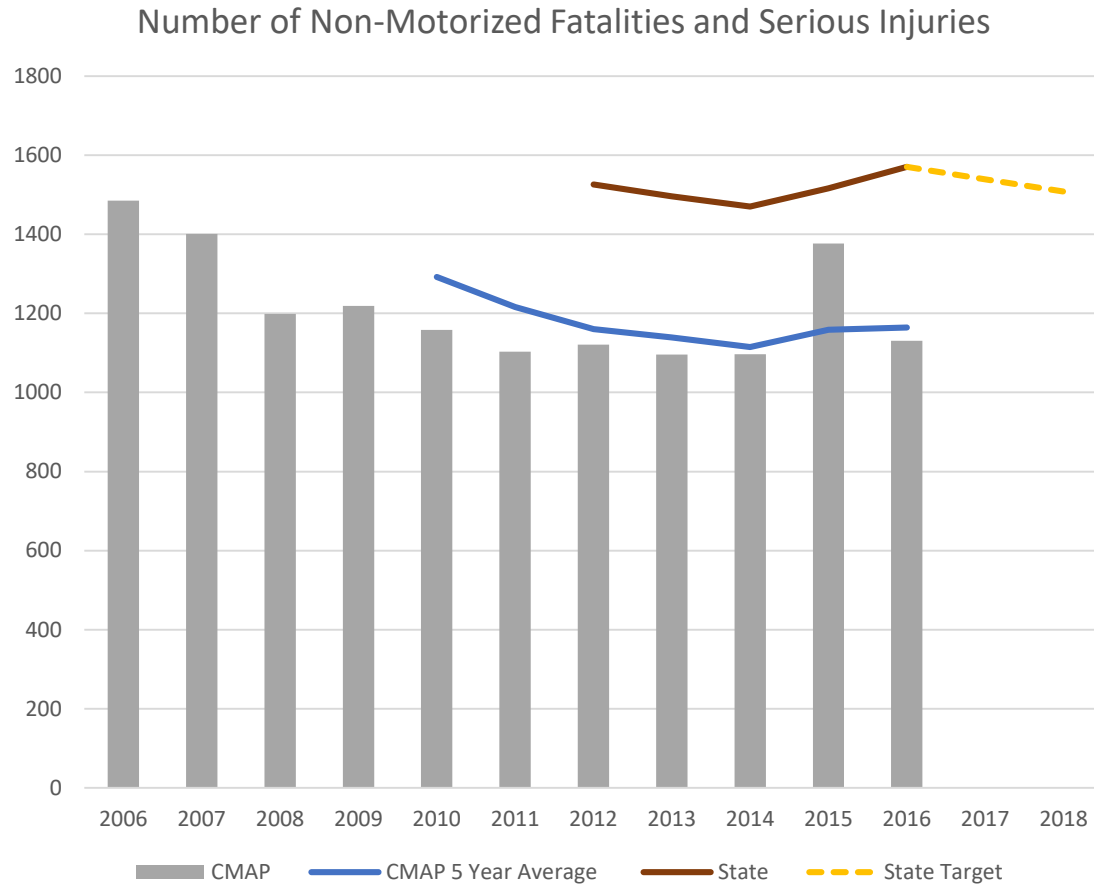
Target: Support IDOT’s goal to reduce the statewide severe injuries from 11,774.4 (five-year 2012-16 average) to 11,231.1 (five-year 2014-18 average) by December 31, 2018.

Serious Injuries per 100M VMT



Target: Support IDOT’s goal to reduce the statewide severe injury rate per 100 million vehicle miles traveled (VMT) from 11.29 (five-year 2012-16 average) to 10.83 (five-year 2014-18 average) by December 31, 2018.

Highway Safety: Non-motorist fatalities and serious injuries



Target: Support IDOT’s goal to reduce the number of statewide non-motorized fatalities and serious injuries from traffic crashes from 1570.8 (five-year 2012-16 average) to 1508.6 (five-year 2014-18 average) by December 31, 2018.

Pavement Condition

Interstate NHS Pavement Condition Target



Target: 2022: At least 58.9 percent good, none poor

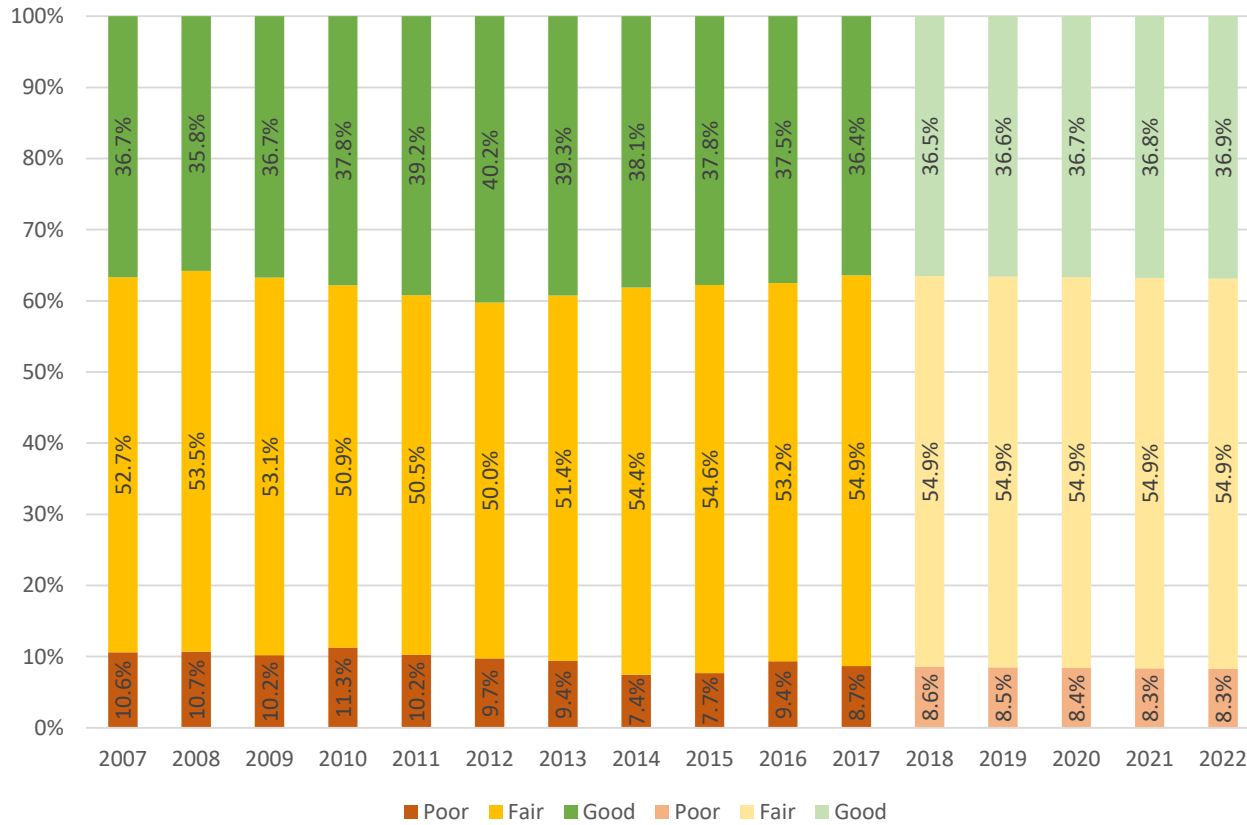
Non-Interstate NHS Pavement Condition Target



Target: 2022: At least 18.2 percent good, no more than 27.9 percent poor

Bridge Condition

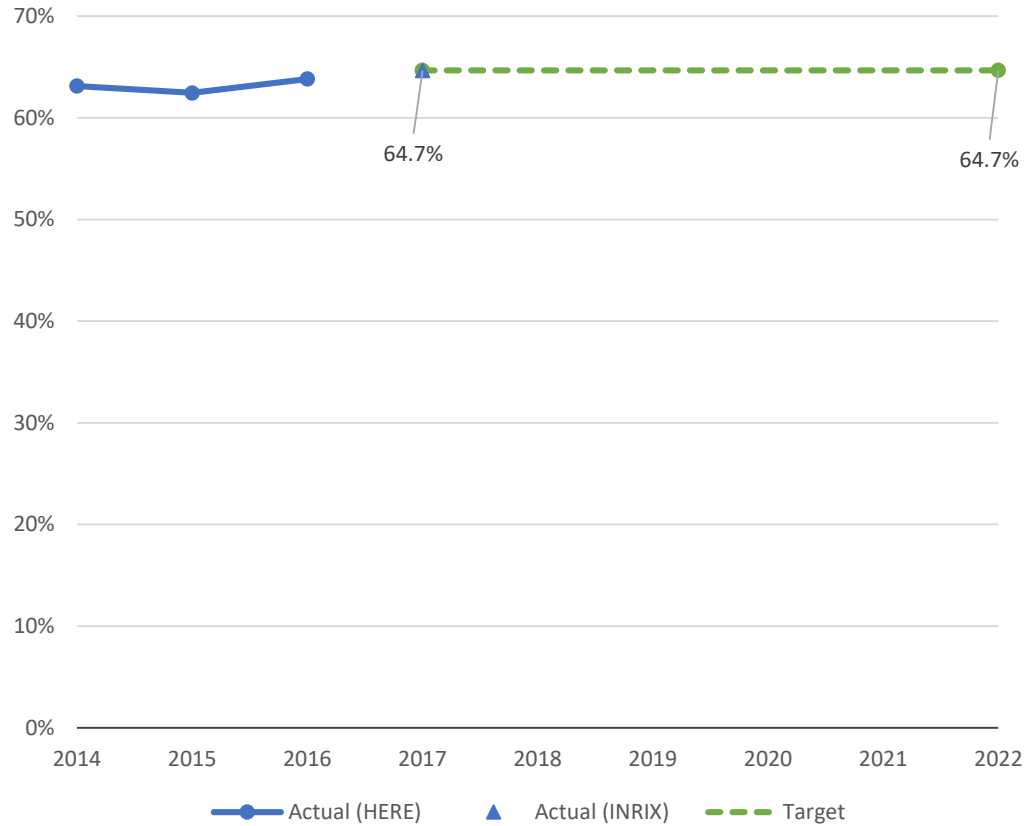
CMAP NHS Bridge Condition



Target: 2022: At least 37.0 percent good and no more than 8.3 percent poor

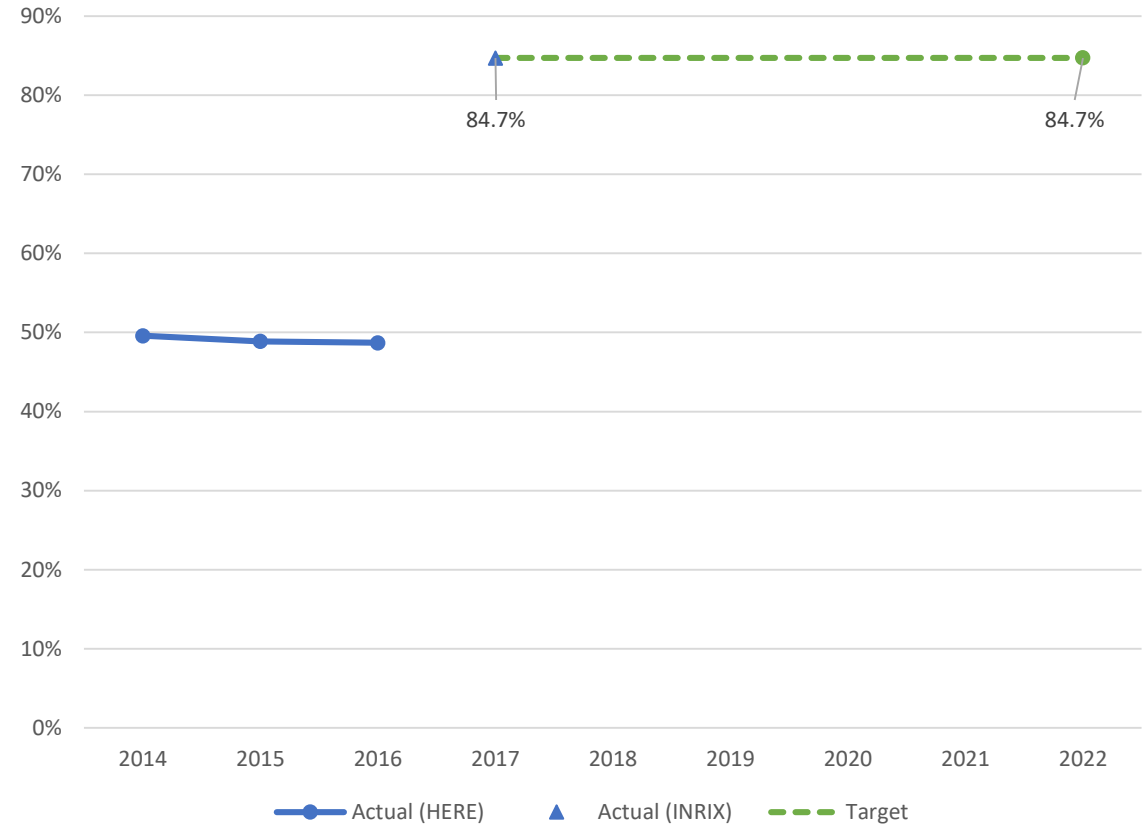
Level of Travel Time Reliability (LOTTTR)

Annual interstate LOTTR in CMAP region



Target: 2022: At least 64.7 percent

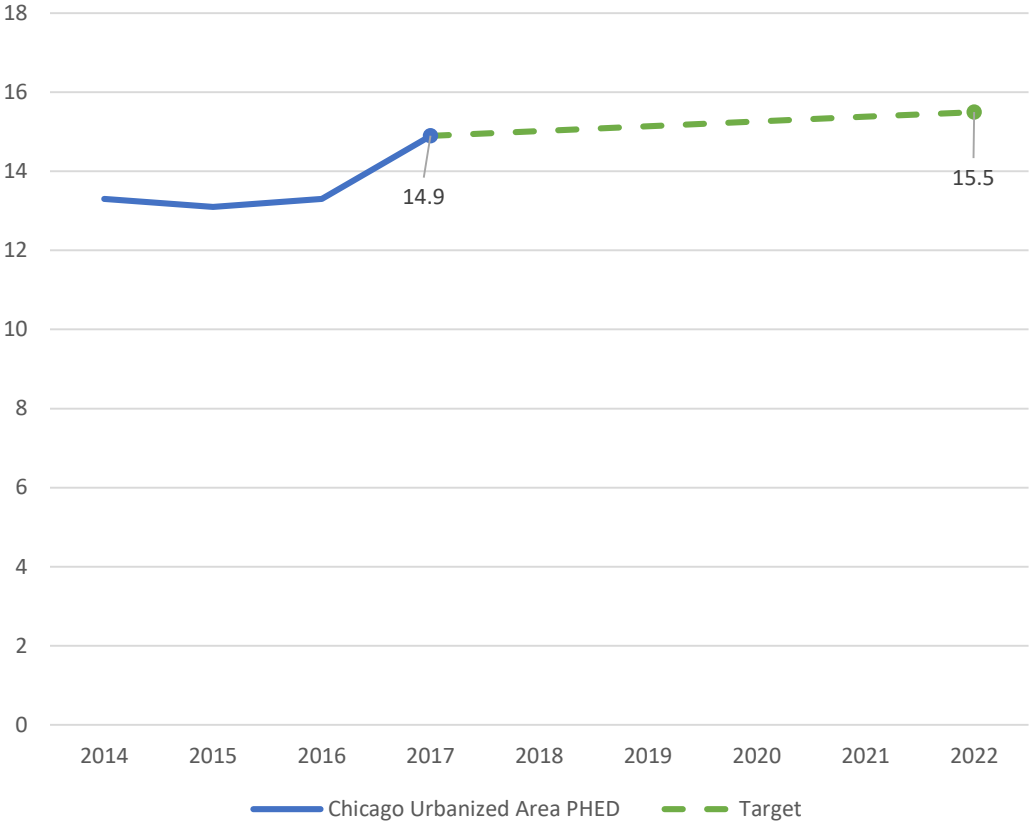
Annual Non-interstate LOTTR in CMAP region



Target: 2022: At least 84.7 percent

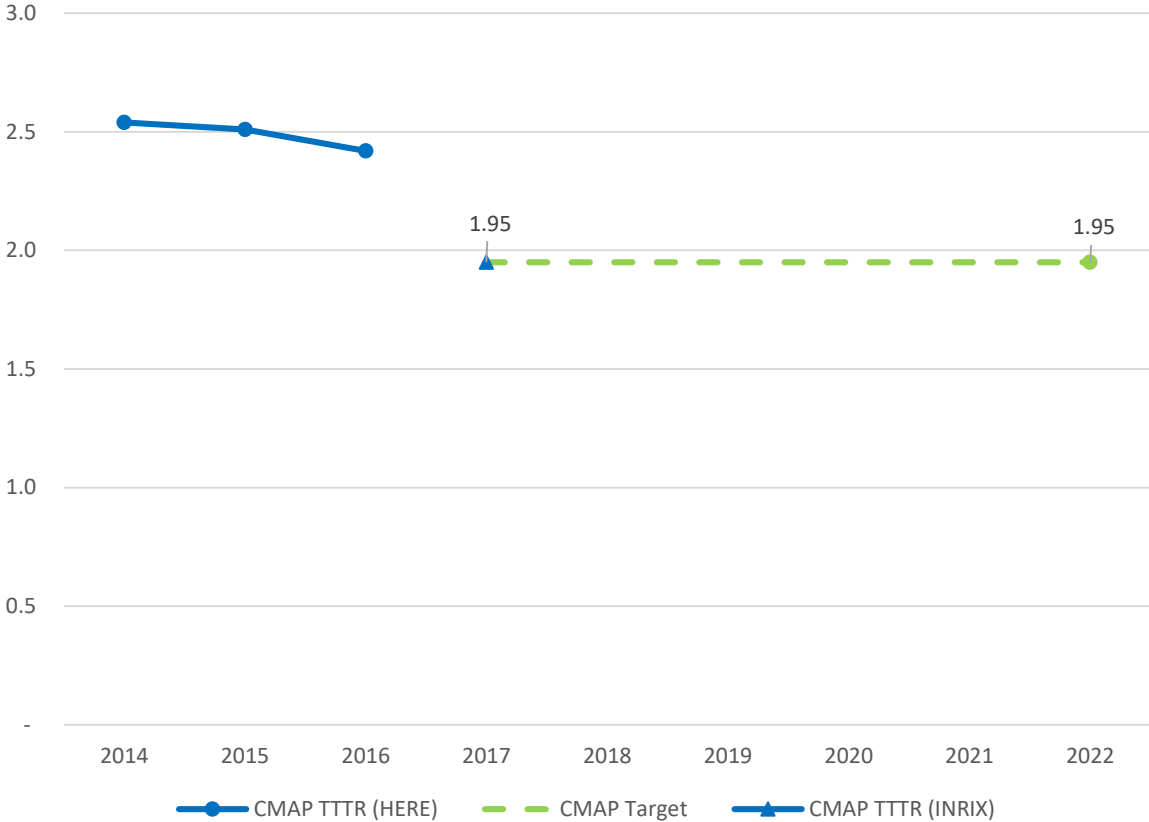
Delay and Truck Reliability

Peah Hour Excessive Delay per Captia



Target: 2022: 15.5 hours per capita

Truck Travel Time Reliability (TTTR)

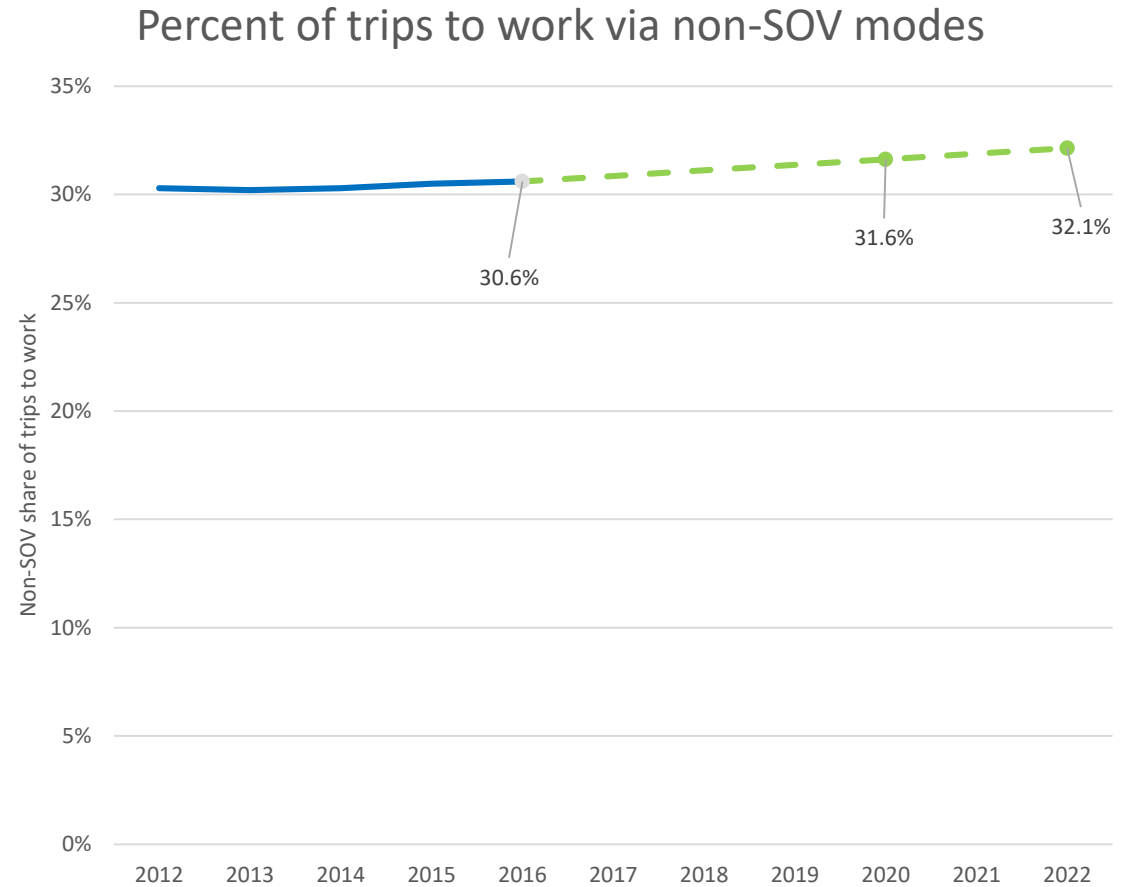


Target: 2022: Less than 1.95

Emissions and Percent of Trips to work vis non-SOV modes

Total emissions reduction of on-road mobile source emissions

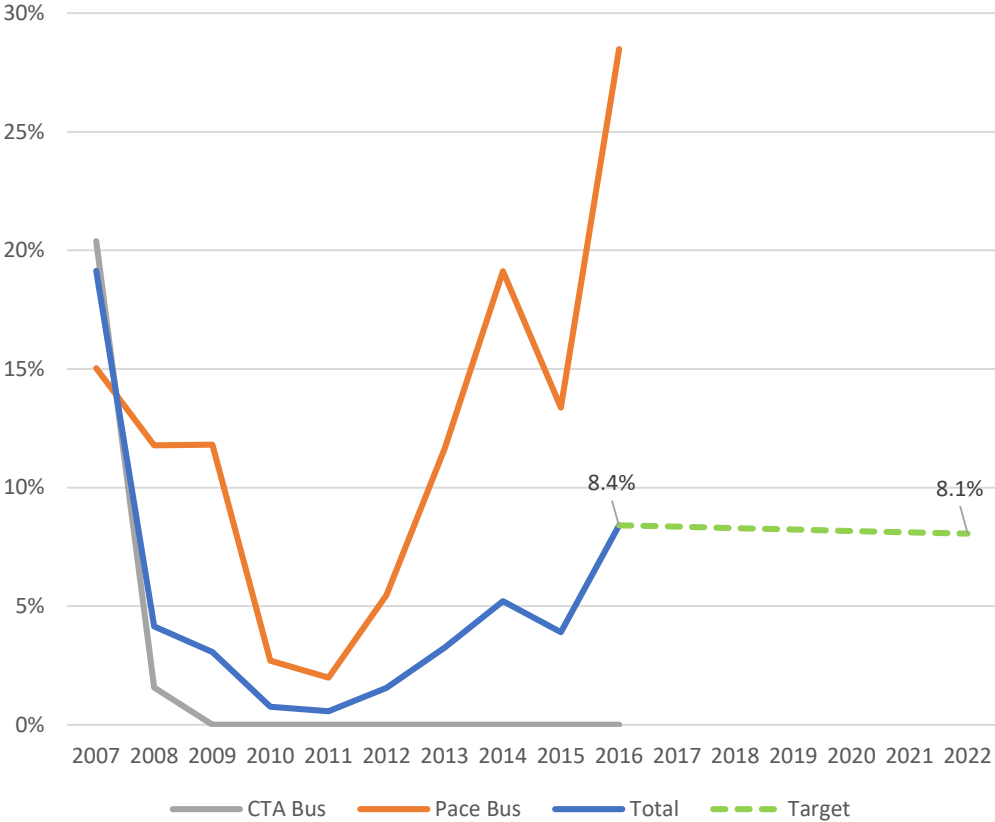
	Daily VOC (kg)	Daily NOx (kg)	Daily PM _{2.5} (kg)	Daily PM ₁₀ (kg)
2019 (2-year Target)	123.035	3,321.759	216.088	0.000
2021 (4-year Target)	246.070	6,643.518	432.176	0.000



Targets: 2020: At least 31.6 percent
2022: At least 32.1 percent

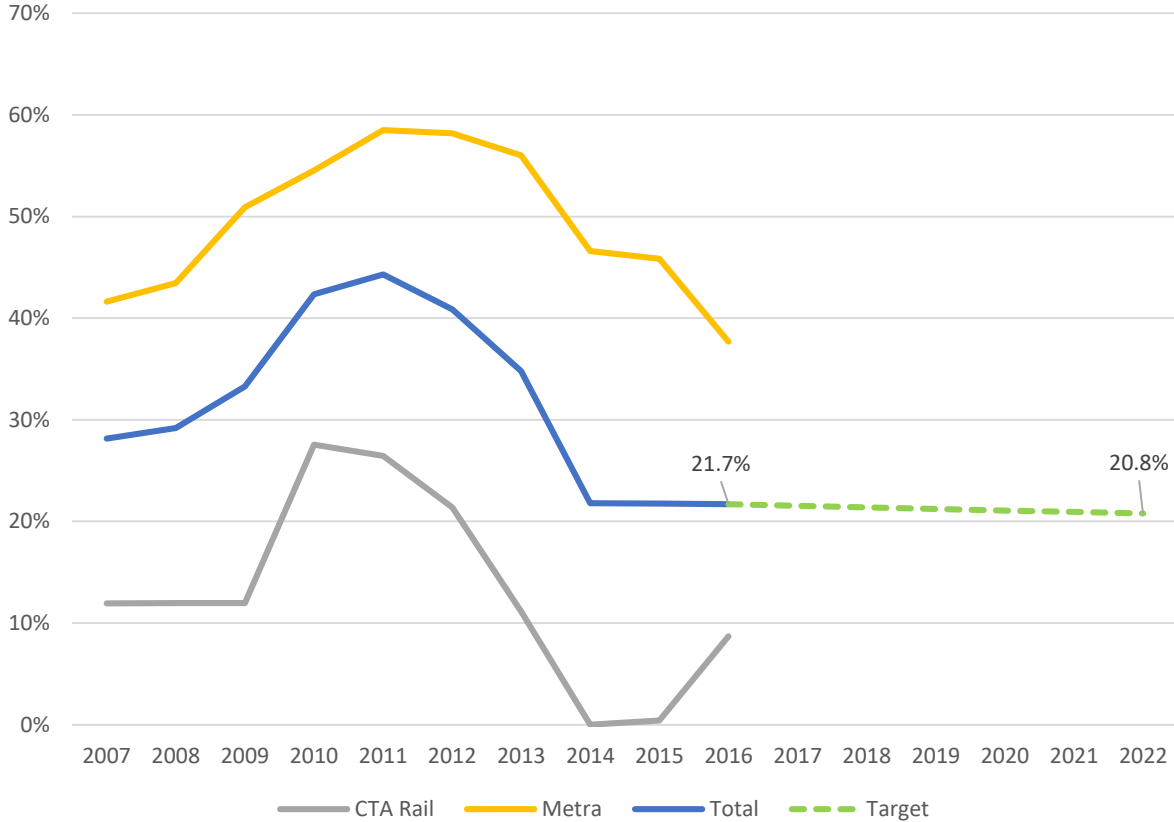
Transit: Vehicles

Percent of buses past ULB



Target: 2022: Less than 8.1 percent of vehicles past ULB

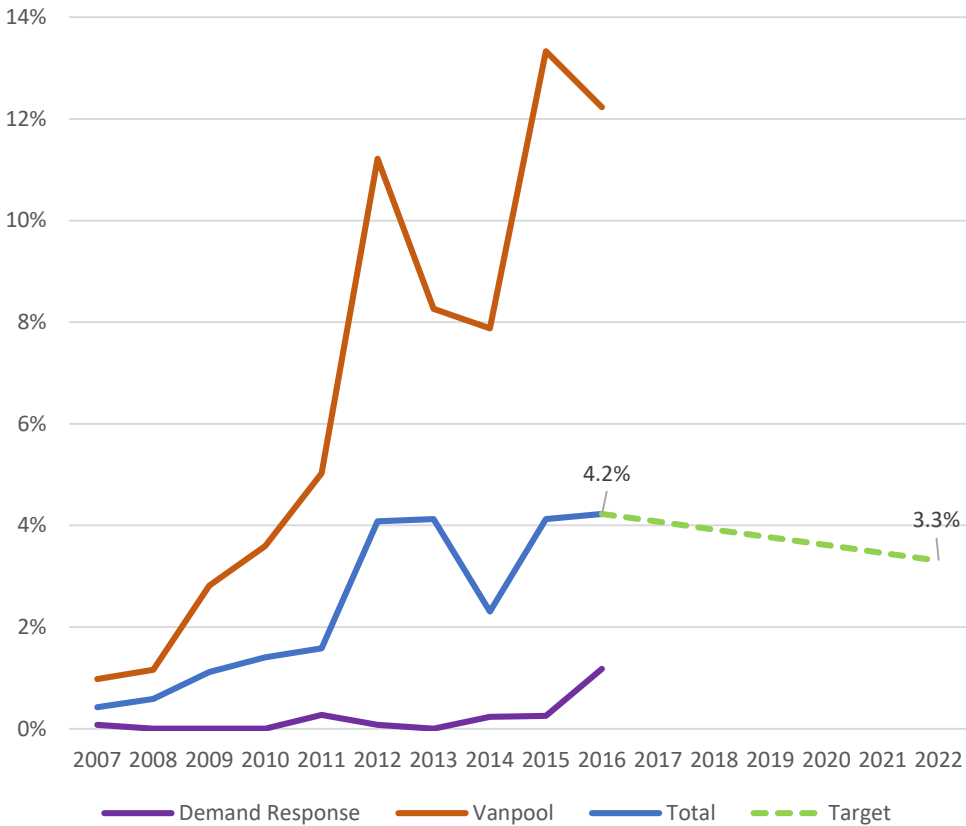
Percent of rail vehicles past ULB



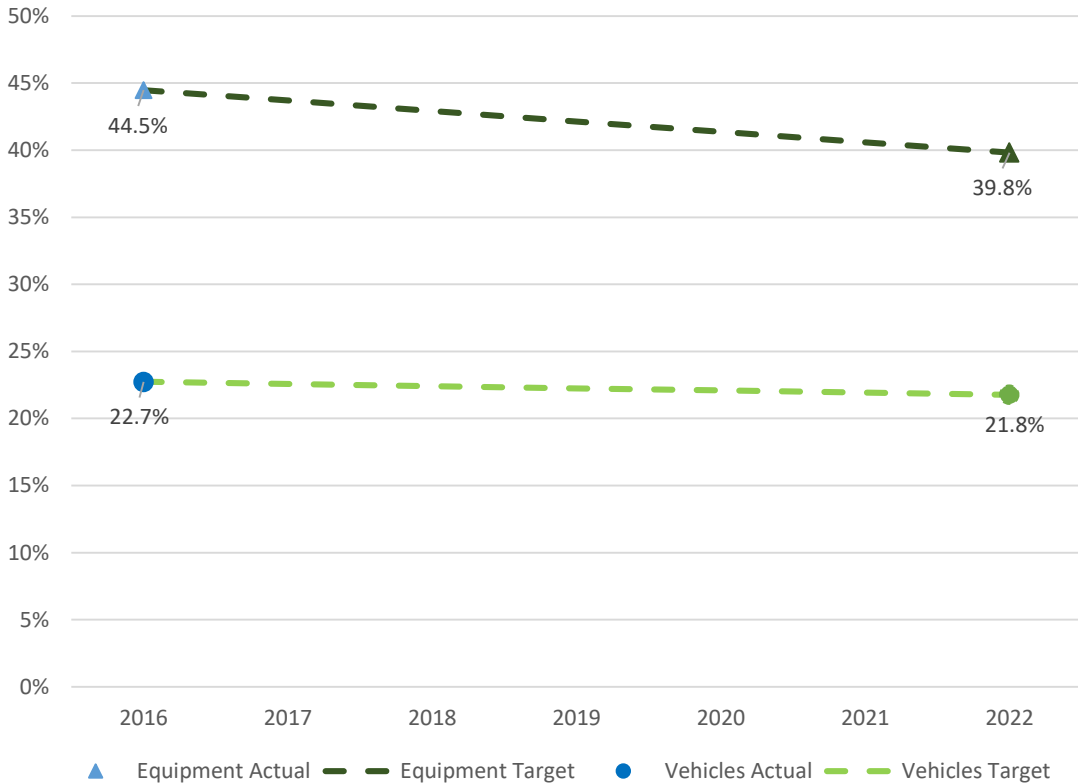
Target: 2022: Less than 20.8 percent of vehicles past ULB

Transit: Vehicles

Percent of non-fixed route vehicles past ULB



Percent of non-revenue vehicles and equipment exceeding their useful life

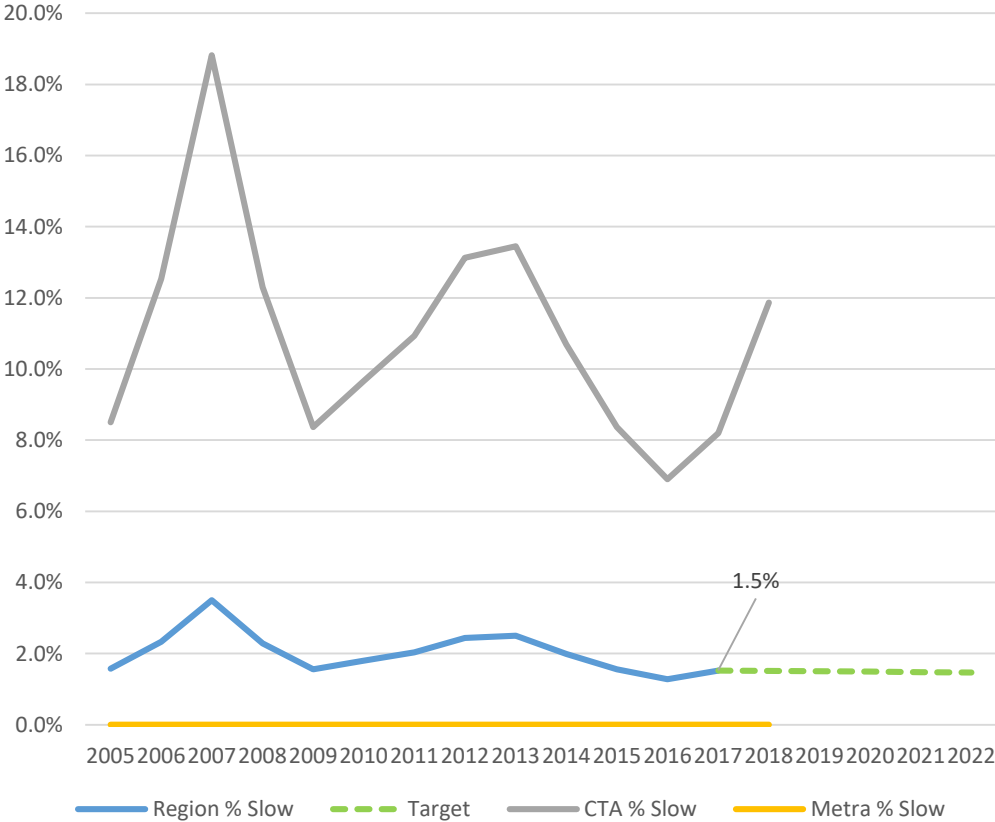


Target: 2022: Less than 3.3 percent of vehicles past ULB

Target: 2022: No more than 21.8 percent for vehicles, no more than 39.8 percent for equipment

Transit: Infrastructure and Facilities

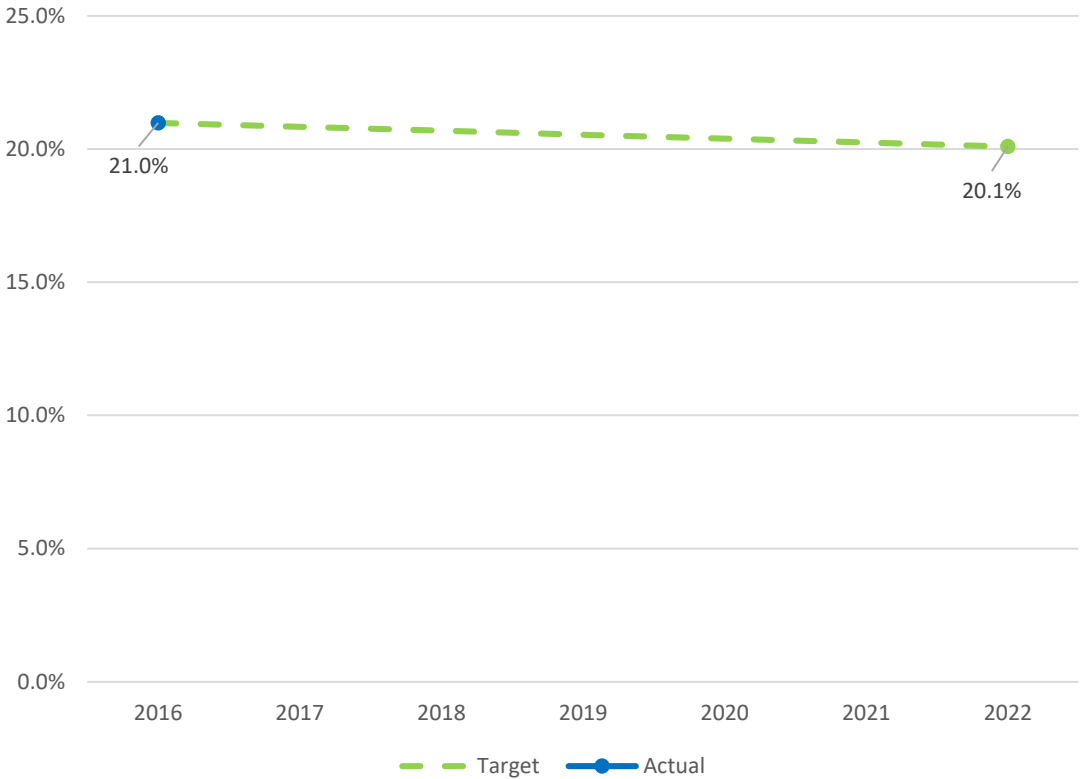
Percent of track with performance restrictions



Target: 2022: Less than 1.4 percent

*Metra data to be revised

Percent of transit facilities rated in marginal or fair condition



Target: 2022: No more than 20.1 percent

Connection to the TIP

- Federal requirements that MPOs link investment priorities of TIP to achieve performance targets
- CMAP has already added several questions to eTIP, more detailed question will be added later

Project Questions

- Project is split from another project. The TIP ID is
- Project is a combination of multiple projects. The TIP ID(s)
- Project is related to another project(s). The TIP ID(s)
- Includes an ITS component? Estimated total cost
- Includes elements to specifically address the movement of freight? Estimated total cost
- Project is identified in a Pavement Management System. The adopting agency and date of adoption of that plan are
- Project may influence SAFETY performance targets
- Project may influence TRANSIT ASSET CONDITION performance targets
- Project may influence PAVEMENT CONDITION performance targets
- Project may influence BRIDGE CONDITION performance targets
- Project may influence TRAVEL RELIABILITY/CONGESTION performance targets
- Project may influence NON-SOV TRAVEL performance targets
- Project may influence EMISSIONS REDUCTION performance targets
- None of the questions above apply to this project

Next Steps

- Adjust targets as needed, based on committee feedback and additional data
- Submit comments by August 14
- Final System Performance Report will be made available with the final ON TO 2050 plan
- Plan is scheduled for adoption for October 2018
 - Targets would become official with plan adoption

Send comments to:

Martin Menninger

Associate Planner

mmenninger@cmap.illinois.gov

312.386.8725

Todd Schmidt

Senior Planner

tschmidt@cmap.illinois.gov

312.386.8711