


ON TO 2050

## Walkability: Local Strategy Map and Indicator

Bicycle and Pedestrian Task Force  
September 26, 2018

Noel Peterson, Senior Analyst, CMAP




---

---

---

---

---

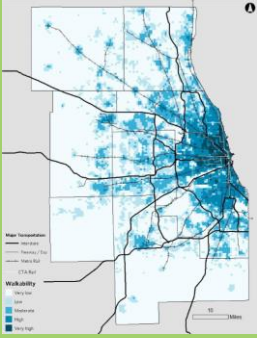

---

---

---

### Walkability Local Strategy Map

- **Localized index inspired by Jeff Speck, incorporating multiple factors:**
  - Amenities within 30-minute walkshed
  - Transit connectivity/frequency
  - Population & jobs
  - Intersection density
  - Block length & area
  - Parcel size
  - Tree canopy
  - Serious & fatal bike/ped crashes


---

---

---

---

---

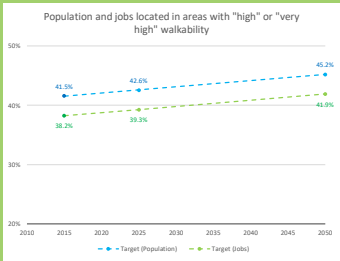
---

---

---

### Indicator Targets


#### Population and Jobs Located in Highly Walkable Areas



Year	Target Population (%)	Target Jobs (%)
2015	41.5%	38.2%
2025	42.6%	39.3%
2050	45.2%	41.9%

**Population**  
**Current: 41.5%**  
**2025: 42.6%**  
**2050: 45.2%**

**Jobs**  
**Current: 38.2%**  
**2025: 39.3%**  
**2050: 41.9%**




---

---

---

---

---

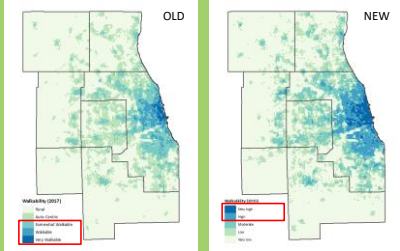
---

---

---

### Indicator Changes Since Draft Plan

- Updated layer with injuries and tree canopy cover
- Refocus from “moderately” to “highly” walkable



CMAP

---

---

---

---

---

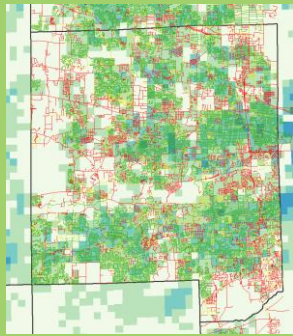
---

---

---

### Future Improvements

- CMAP sidewalk inventory was not finished in time for inclusion, but will be incorporated in the future
- Completed portion tracks well with current index
  - Red = no sidewalks
  - Yellow = sidewalk (one side)
  - Green = sidewalks (both sides)



CMAP

---

---

---

---

---

---

---

---

### Get the Data!

[datahub.cmap.illinois.gov/dataset/on-to-2050-layer-walkability](https://datahub.cmap.illinois.gov/dataset/on-to-2050-layer-walkability)

### Questions?

Noel Peterson  
Senior Analyst, CMAP  
[npeterson@cmap.illinois.gov](mailto:npeterson@cmap.illinois.gov)  
312.386.8679

CMAP

---

---

---

---

---

---

---

---