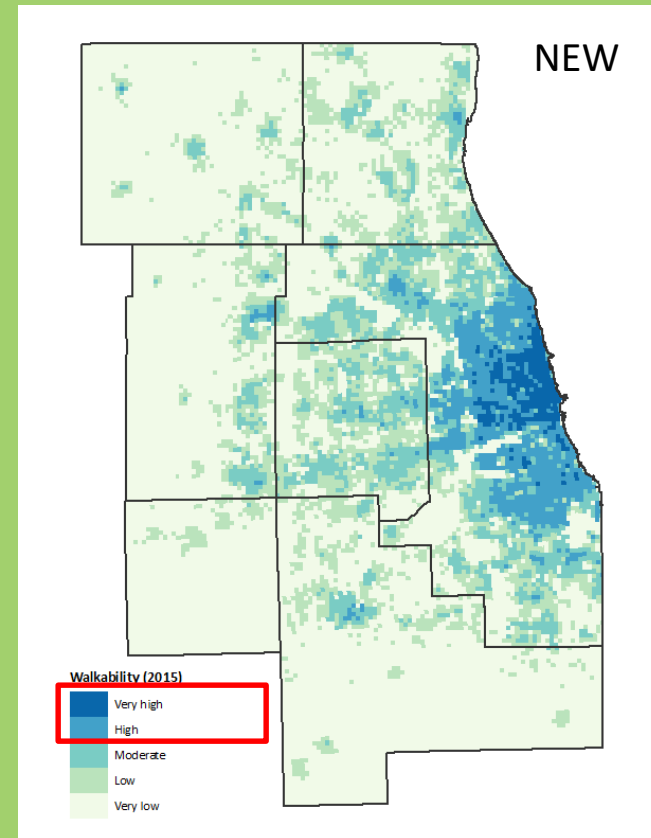
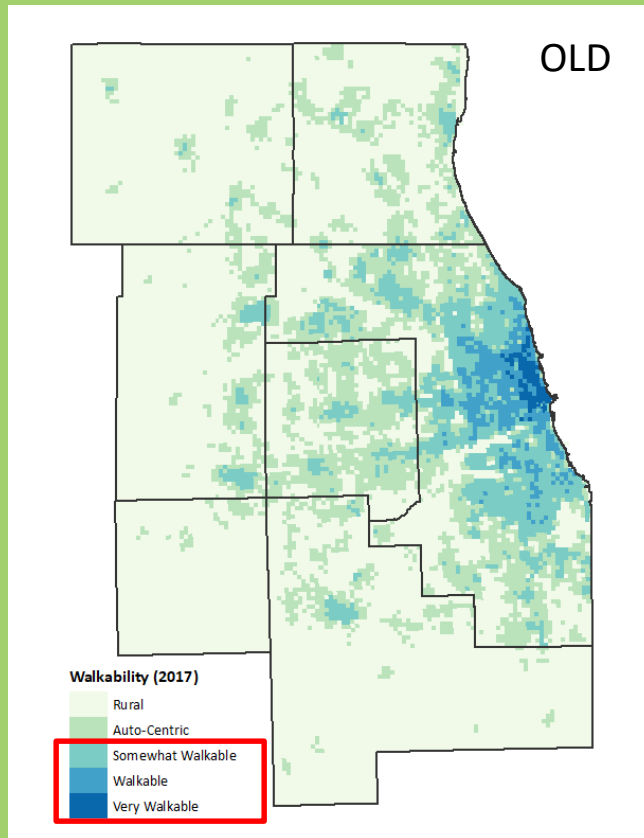


Plan Indicators: Walkability

Transportation Committee
September 7, 2018

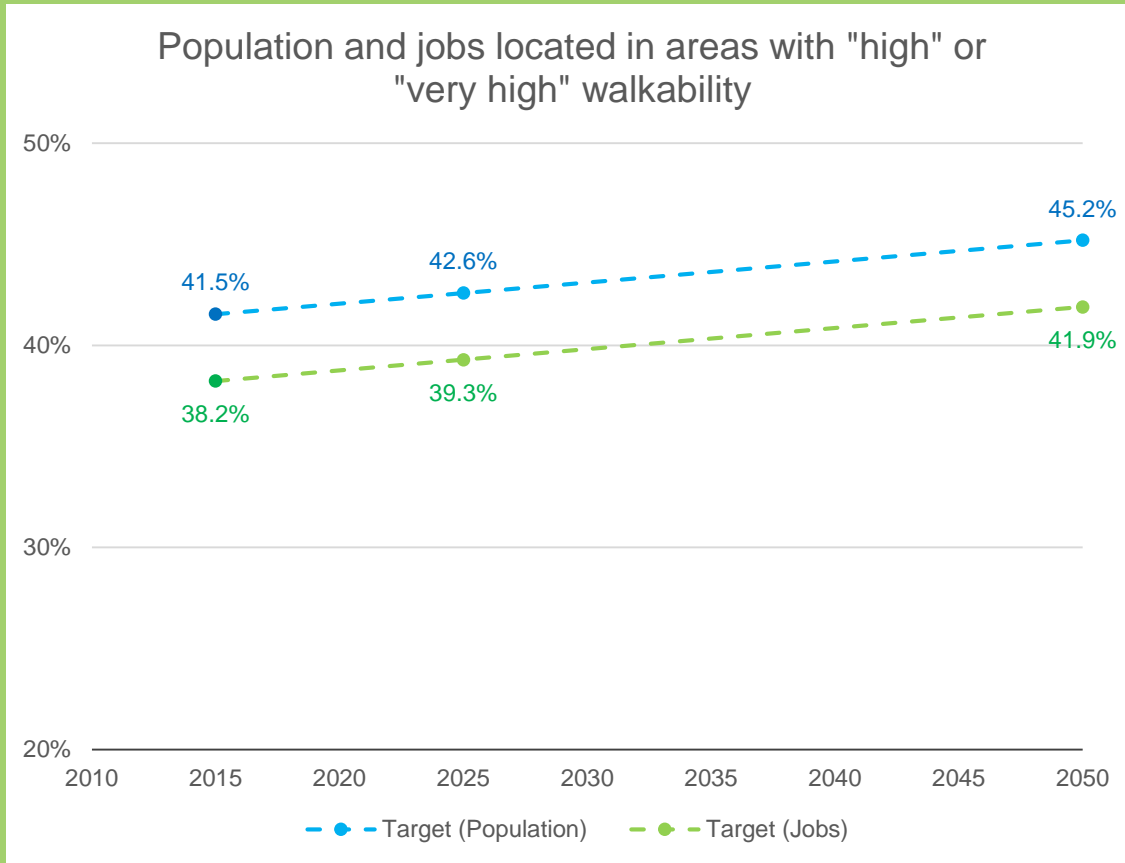
Changes Since Draft Plan

- Incorporate serious injuries and tree canopy cover
- Refocus from “moderately” to “highly” walkable



Indicator Targets

Population and Jobs Located in Highly Walkable Areas



Population

Current: 41.5%

2025: 42.6%

2050: 45.2%

Jobs

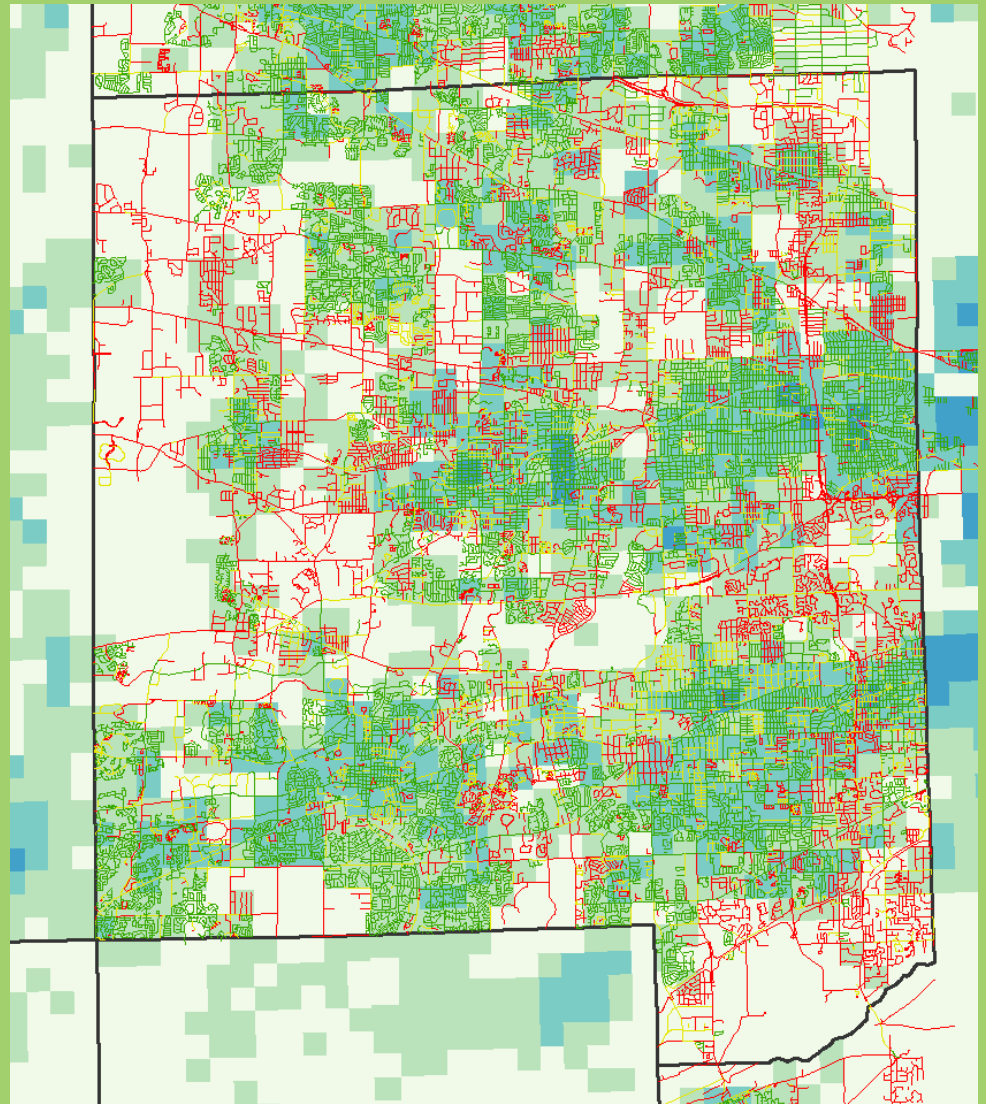
Current: 38.2%

2025: 39.3%

2050: 41.9%

Future Improvements

- **CMAP sidewalk inventory was not finished in time for inclusion, but will be incorporated in the future**
- **Completed portion tracks well with current index**
 - Red = no sidewalks
 - Yellow = sidewalk (one side)
 - Green = sidewalks (both sides)



Thank You

Noel Peterson

npeterson@cmap.illinois.gov

312.386.8679

Senior Analyst

Chicago Metropolitan Agency for Planning

www.cmap.illinois.gov