

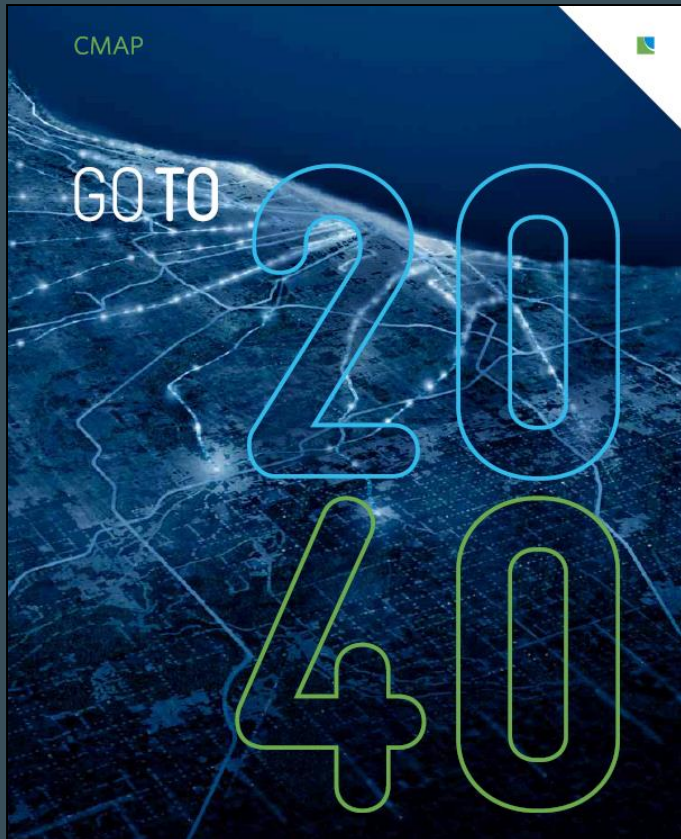


# Helping Communities Prosper

## Local Capacity Building

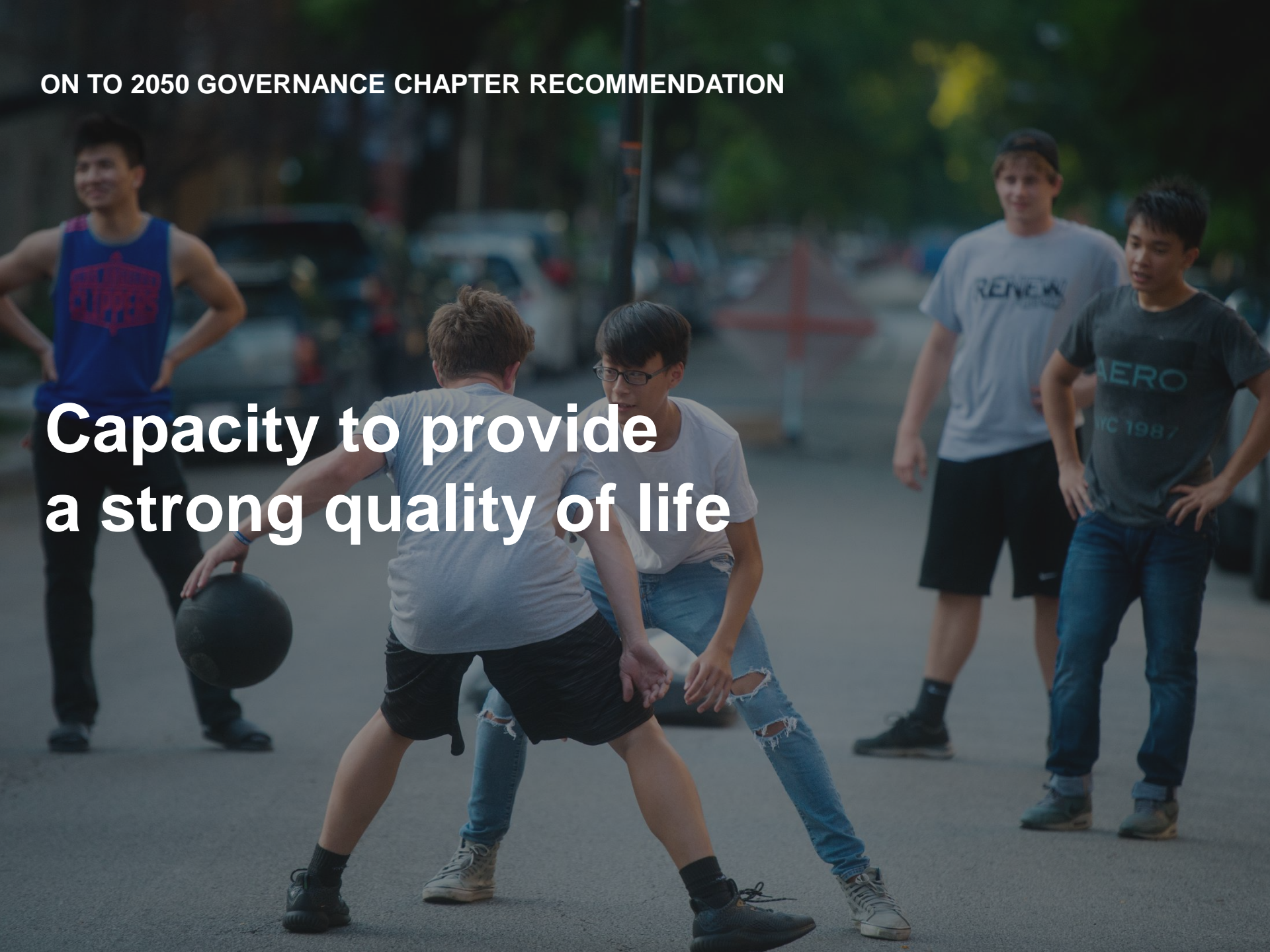
Environment & Natural Resources Committee  
March 7, 2019

# Our Capacity Building Mandate



ON TO 2050 GOVERNANCE CHAPTER RECOMMENDATION

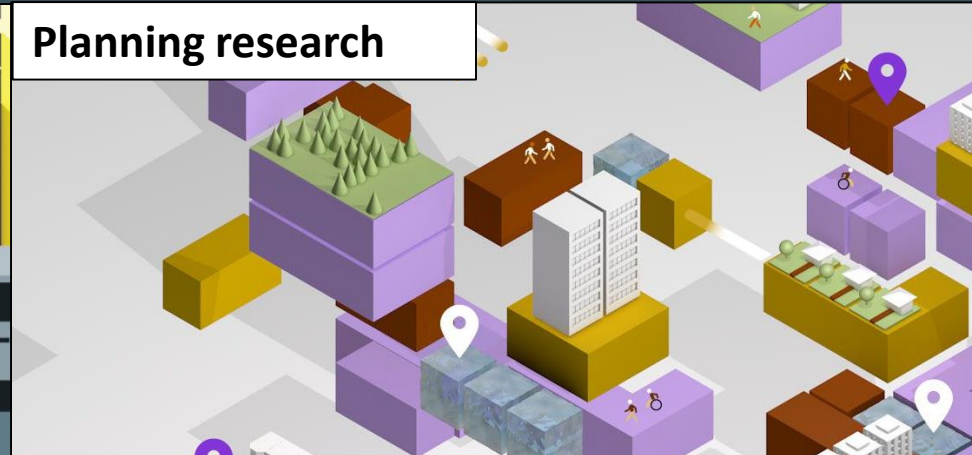
**Capacity to provide  
a strong quality of life**





# New Capacity Building Approach

## Four planning strategies for local governments



# Coordinated Investment Studies

Help local governments find opportunities to collaborate on public infrastructure and services



# Leadership Academy

Trainings, networking, and skill-building for elected officials, staff, and citizen commissions



# Leadership Academy: Discussion

What trainings are out there? What is working well? Which partners effectively provide trainings?

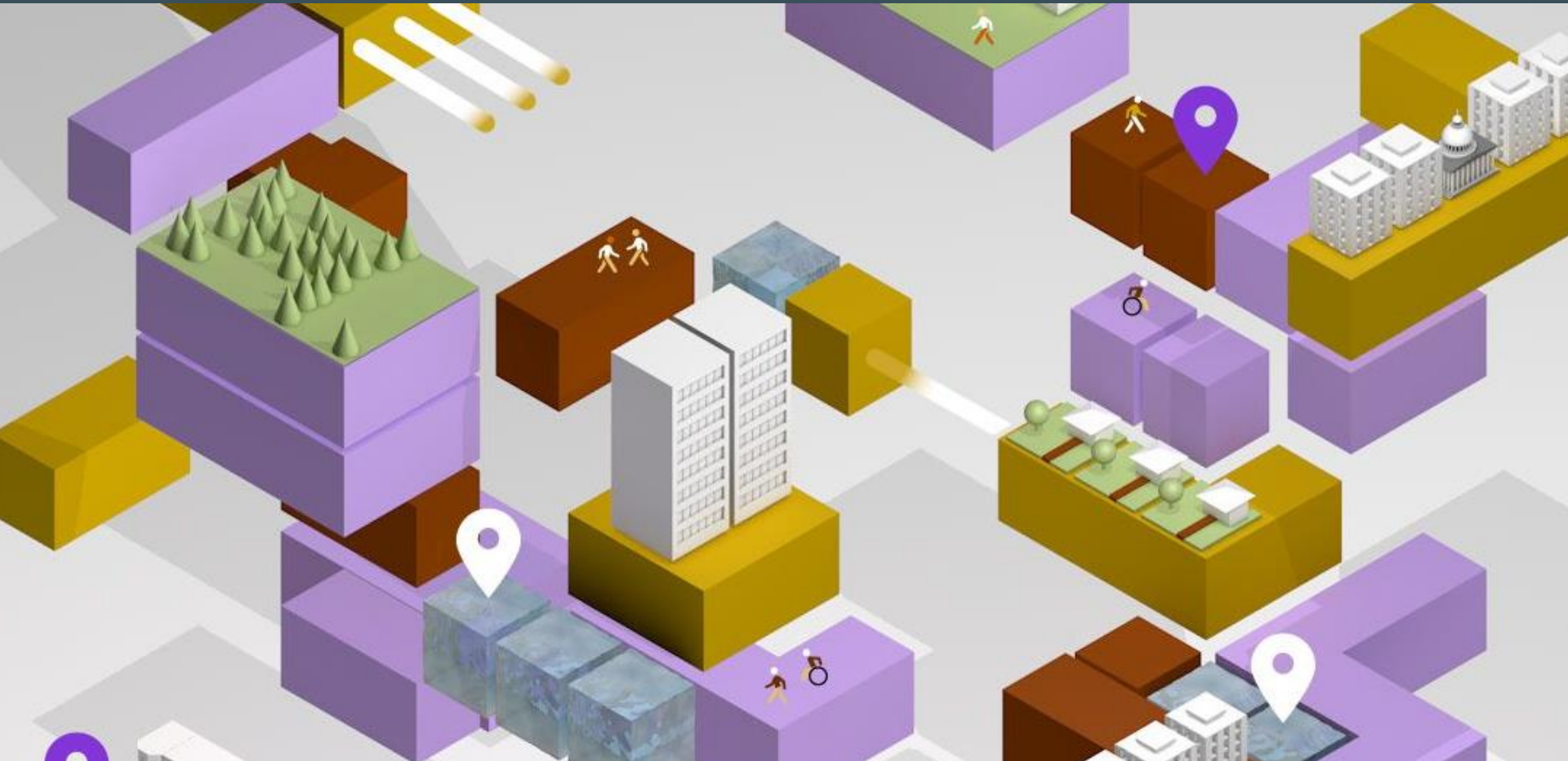
What training do you wish was available?

What are priority audiences?



# Planning Research

Provide on-demand curated data and analysis to the region's communities





# Embedded Staff Planners (ESPs)

CMAP staff will serve as temporary, part-time planners in capacity constrained communities



# Community Selection Considerations

- Community interest and need
- CMAP existing relationship with community
- Feedback from others (SSMMA, MPC/MMC, CMAP team)
- Some staff support, but not a full-time planner
- Potential to have and show success
- Politics, political situation
- Geographic representation

# What will an ESP do?

- Phase 1: Initial assessment (6 months)
  - Existing conditions review
  - Relationship building
  - Identification of key challenges
  - Development of work plan

# What will an ESP do?

- Phase 2: ESP work plan execution (18 months)
  - Transportation Investment Programs
  - Public Engagement
  - Capital Improvement Program
  - Land Use Planning
  - Governance
  - Training and Outreach
  - Economic Development



# ESPs: Discussion

What should we pay particular attention to in the initial “getting to know you” phase?

How does your work connect to the work ESPs will be doing?



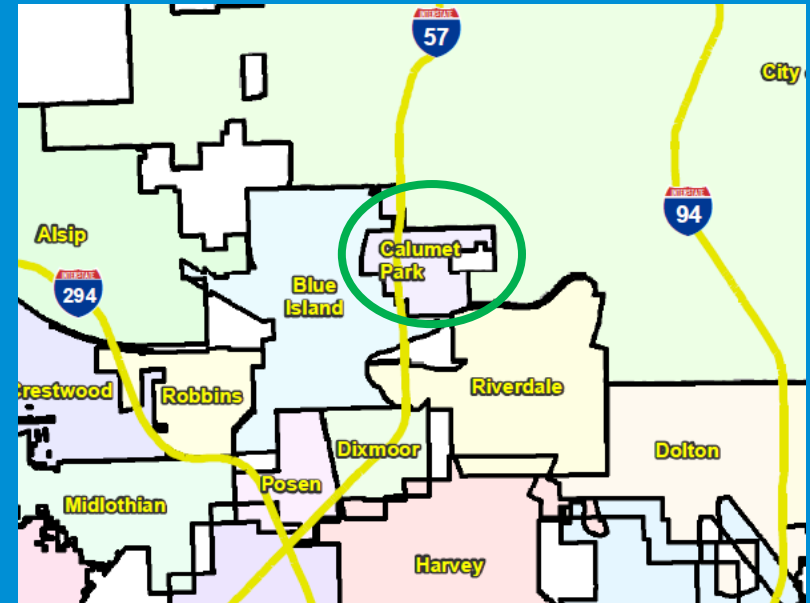
**Thank you!**



# Village of Calumet Park

## Characteristics

- LTA community
- Interested per Municipal Survey
- No planning staff, but active Village Administrator
- Limited connection to transportation programs but many opportunities to connect
- Village Admin active & successful connecting w/ resources but need supportive expertise
- Partners: Invest in Cook, CNT, MWRD
- Many opportunities for alignment with ON TO 2050





# Village of Sauk Village

## Characteristics

- LTA community
- Stated 'Yes, definitely' interest
- Zero planning staff
- Limited connection to T programs
- Well-positioned to support adjacent munis in future cohorts
- Partners: Invest in Cook, CDBG, IHDA
- Many opportunities for alignment with ON TO 2050

